

FCC SAR TEST REPORT

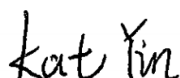
FCC ID : PY7-15465A
Equipment : GSM/WCDMA/LTE Phone with BT, DTS/UNII
a/b/g/n/ac, GPS, FM Receiver and NFC
Brand Name : SONY
Applicant : Sony Corporation
1-7-1 Konan Minato-ku Tokyo, 108-0076 Japan
Manufacturer : Sony Corporation
1-7-1 Konan Minato-ku Tokyo, 108-0076 Japan
Standard : FCC 47 CFR Part 2 (2.1093)

We, Sporton International (Kunshan) Inc., would like to declare that the tested sample provide by manufacturer and the test data has been evaluated in accordance with the test procedures given in 47 CFR Part 2.1093 and FCC KDB and has been pass the FCC requirement.

The test results in this report apply exclusively to the tested model / sample. Without written approval of Sporton International (Kunshan) Inc., the test report shall not be reproduced except in full.



Reviewed by: Nick Hu / Supervisor



Approved by: Kat Yin / Manager



Sporton International (Kunshan) Inc.

No. 1098, Pengxi North Road, Kunshan Economic Development Zone Jiangsu Province 215300
People's Republic of China



Table of Contents

1. Statement of Compliance	4
2. Guidance Applied.....	4
3. Equipment Under Test (EUT) Information	5
3.1 General Information	5
3.2 Device Serial Number	5
3.3 General LTE SAR Test and Reporting Considerations	6
4. RF Exposure Limits.....	7
4.1 Uncontrolled Environment.....	7
4.2 Controlled Environment.....	7
5. Specific Absorption Rate (SAR).....	8
5.1 Introduction	8
5.2 SAR Definition.....	8
6. System Description and Setup	9
6.1 Test Site Location.....	9
6.2 E-Field Probe	10
6.3 Data Acquisition Electronics (DAE)	10
6.4 Phantom.....	11
6.5 Device Holder.....	12
7. Measurement Procedures	13
7.1 Spatial Peak SAR Evaluation.....	13
7.2 Power Reference Measurement.....	14
7.3 Area Scan	14
7.4 Zoom Scan.....	15
7.5 Volume Scan Procedures.....	15
7.6 Power Drift Monitoring.....	15
8. Test Equipment List.....	16
9. System Verification	17
9.1 Tissue Verification	17
9.2 System Performance Check Results.....	18
10. RF Exposure Positions	19
10.1 Ear and handset reference point	19
10.2 Definition of the cheek position	20
10.3 Definition of the tilt position	21
10.4 Body Worn Accessory	21
10.5 Product Specific Exposure	22
10.6 Wireless Router.....	22
11. GSM/UMTS/CDMA/LTE Output Power (Unit: dBm).....	23
12. WiFi/Bluetooth Output Power (Unit: dBm).....	33
13. RF Exposure Conditions	39
14. SAR Test Results	39
14.1 Head SAR	41
14.2 Hotspot SAR	43
14.3 Body Worn Accessory SAR.....	45
15. Simultaneous Transmission Analysis.....	46
15.1 Head Exposure Conditions	47
15.2 Hotspot Exposure Conditions.....	48
15.3 Body-Worn Accessory Exposure Conditions	49
16. Uncertainty Assessment	50
17. References.....	50
Appendix A. Plots of System Performance Check	
Appendix B. Plots of High SAR Measurement	
Appendix C. DASY Calibration Certificate	
Appendix D. Test Setup Photos and Antenna Location	

History of this test report

Report No.	Version	Description	Issued Date
FA1O1906	Rev. 01	Initial issue of report	Dec. 15, 2021
FA1O1906	Rev. 02	Removed relevant data of HSPA+	Dec. 21, 2021

**1. Statement of Compliance**

Applicant Name	Sony Corporation			
EUT Description	GSM/WCDMA/LTE Phone with BT, DTS/UNII a/b/g/n/ac, GPS, FM Receiver and NFC			
Brand Name	SONY			
FCC ID	PY7-15465A			
HW Version	A			
SW Version	0.106			
RF Exposure Conditions	Equipment Class			
	Licensed	DTS	NII	DSS
Head (1g SAR W/kg)	0.31	0.26	0.24	0.12
Body-Worn (1g SAR W/kg)	0.29	0.13	0.26	<0.10
Hotspot (1g SAR W/kg)	0.38	0.28		<0.10
Highest Simultaneous Transmission (1g SAR W/kg)	0.59	0.59	0.56	0.56
Date Tested	2021/11/15~2021/11/21			
Test Result	Pass			
Remark:				
1. This device 2.4GHz WLAN supports Hotspot operation and Bluetooth supports tethering applications.				
2. This device 5GHz WLAN does not support Hotspot operation.				

This device is in compliance with Specific Absorption Rate (SAR) for general population/uncontrolled exposure limits (1.6 W/kg) specified in FCC 47 CFR part 2 (2.1093) and ANSI/IEEE C95.1-1992, and had been tested in accordance with the measurement methods and procedures specified in IEEE 1528-2013 and FCC KDB publications.

2. Guidance Applied

The Specific Absorption Rate (SAR) testing specification, method, and procedure for this device is in accordance with the following standards:

- FCC 47 CFR Part 2 (2.1093)
- ANSI/IEEE C95.1-1992
- IEEE 1528-2013
- FCC KDB 865664 D01 SAR Measurement 100 MHz to 6 GHz v01r04
- FCC KDB 865664 D02 SAR Reporting v01r02
- FCC KDB 447498 D01 General RF Exposure Guidance v06
- FCC KDB 648474 D04 SAR Evaluation Considerations for Wireless Handsets v01r03
- FCC KDB 248227 D01 802.11 Wi-Fi SAR v02r02
- FCC KDB 941225 D01 3G SAR Procedures v03r01
- FCC KDB 941225 D05 SAR for LTE Devices v02r05
- FCC KDB 941225 D06 Hotspot Mode SAR v02r01

3. Equipment Under Test (EUT) Information

3.1 General Information

Wireless Technologies	Frequency	Operating Mode	
GSM	850 1900	. GSM Voice . GPRS (GMSK) . EDGE (8PSK)	Multi-Slot Class: Class 33
	Does device support dual transfer mode? (No)		
W-CDMA (UMTS)	Band 5	. AMR / RMC 12.2Kbps . HSDPA . HSUPA . DC-HSDPA	
LTE (FDD)	Band 5 Band 12	. QPSK . 16QAM . 64QAM	
WiFi	2.4GHz: 2412 MHz ~ 2462 MHz	. 11b . 11g . 11g/n (HT20)	
	5GHz: 5.2GHz: 5180 MHz ~ 5240 MHz 5.3GHz: 5260 MHz ~ 5320 MHz 5.5GHz: 5500 MHz ~ 5720 MHz 5.8GHz: 5745 MHz ~ 5825 MHz	. 11a . 11n (HT20) . 11n (HT40) . 11ac (VHT20) . 11ac (VHT40) . 11ac (VHT80)	
Bluetooth	2.4GHz	. BR / EDR / LE	
NFC	13.56MHz	. ASK	

3.2 Device Serial Number

Band	SN
WWAN/WLAN	HQ61B200EC

3.3 General LTE SAR Test and Reporting Considerations

Summarized necessary items addressed in KDB 941225 D05 v02r05								
FCC ID	PY7-15465A							
Equipment Name	GSM/WCDMA/LTE Phone with BT, DTS/UNII a/b/g/n/ac, GPS, FM Receiver and NFC							
Operating Frequency Range of each LTE transmission band	LTE Band 5: 824 MHz ~ 849 MHz LTE Band 12: 699 MHz ~ 716 MHz							
Channel Bandwidth	LTE Band 5:1.4MHz, 3MHz, 5MHz, 10MHz LTE Band 12:1.4MHz, 3MHz, 5MHz, 10MHz							
uplink modulations used	QPSK / 16QAM / 64QAM							
LTE Voice / Data requirements	Voice and Data							
LTE MPR permanently built-in by design	Table 6.2.3-1: Maximum Power Reduction (MPR) for Power Class 1, 2 and 3							
	Modulation	Channel bandwidth / Transmission bandwidth (N _{RB})						MPR (dB)
		1.4 MHz	3.0 MHz	5 MHz	10 MHz	15 MHz	20 MHz	
	QPSK	> 5	> 4	> 8	> 12	> 16	> 18	≤ 1
	16 QAM	≤ 5	≤ 4	≤ 8	≤ 12	≤ 16	≤ 18	≤ 1
	16 QAM	> 5	> 4	> 8	> 12	> 16	> 18	≤ 2
	64 QAM	≤ 5	≤ 4	≤ 8	≤ 12	≤ 16	≤ 18	≤ 2
	64 QAM	> 5	> 4	> 8	> 12	> 16	> 18	≤ 3
	256 QAM	≥ 1						≤ 5
LTE A-MPR	In the base station simulator configuration, Network Setting value is set to NS_01 to disable A-MPR during SAR testing and the LTE SAR tests was transmitting on all TTI frames (Maximum TTI)							
Spectrum plots for RB configuration	A properly configured base station simulator was used for the SAR and power measurement; therefore, spectrum plots for each RB allocation and offset configuration are not included in the SAR report.							

LTE Band 5								
	Bandwidth 1.4 MHz		Bandwidth 3 MHz		Bandwidth 5 MHz		Bandwidth 10 MHz	
	Ch. #	Freq. (MHz)	Ch. #	Freq. (MHz)	Ch. #	Freq. (MHz)	Ch. #	Freq. (MHz)
L	20407	824.7	20415	825.5	20425	826.5	20450	829
M	20525	836.5	20525	836.5	20525	836.5	20525	836.5
H	20643	848.3	20635	847.5	20625	846.5	20600	844
LTE Band 12								
	Bandwidth 1.4 MHz		Bandwidth 3 MHz		Bandwidth 5 MHz		Bandwidth 10 MHz	
	Ch. #	Freq. (MHz)	Ch. #	Freq. (MHz)	Ch. #	Freq. (MHz)	Ch. #	Freq. (MHz)
L	23017	699.7	23025	700.5	23035	701.5	23060	704
M	23095	707.5	23095	707.5	23095	707.5	23095	707.5
H	23173	715.3	23165	714.5	23155	713.5	23130	711

4. RF Exposure Limits

4.1 Uncontrolled Environment

Uncontrolled Environments are defined as locations where there is the exposure of individuals who have no knowledge or control of their exposure. The general population/uncontrolled exposure limits are applicable to situations in which the general public may be exposed or in which persons who are exposed as a consequence of their employment may not be made fully aware of the potential for exposure or cannot exercise control over their exposure. Members of the general public would come under this category when exposure is not employment-related; for example, in the case of a wireless transmitter that exposes persons in its vicinity.

4.2 Controlled Environment

Controlled Environments are defined as locations where there is exposure that may be incurred by persons who are aware of the potential for exposure, (i.e. as a result of employment or occupation). In general, occupational/controlled exposure limits are applicable to situations in which persons are exposed as a consequence of their employment, who have been made fully aware of the potential for exposure and can exercise control over their exposure. The exposure category is also applicable when the exposure is of a transient nature due to incidental passage through a location where the exposure levels may be higher than the general population/uncontrolled limits, but the exposed person is fully aware of the potential for exposure and can exercise control over his or her exposure by leaving the area or by some other appropriate means.

Limits for Occupational/Controlled Exposure (W/kg)

Whole-Body	Partial-Body	Hands, Wrists, Feet and Ankles
0.4	8.0	20.0

Limits for General Population/Uncontrolled Exposure (W/kg)

Whole-Body	Partial-Body	Hands, Wrists, Feet and Ankles
0.08	1.6	4.0

1. Whole-Body SAR is averaged over the entire body, partial-body SAR is averaged over any 1gram of tissue defined as a tissue volume in the shape of a cube. SAR for hands, wrists, feet and ankles is averaged over any 10 grams of tissue defined as a tissue volume in the shape of a cube.

5. Specific Absorption Rate (SAR)

5.1 Introduction

SAR is related to the rate at which energy is absorbed per unit mass in an object exposed to a radio field. The SAR distribution in a biological body is complicated and is usually carried out by experimental techniques or numerical modeling. The standard recommends limits for two tiers of groups, occupational/controlled and general population/uncontrolled, based on a person's awareness and ability to exercise control over his or her exposure. In general, occupational/controlled exposure limits are higher than the limits for general population/uncontrolled.

5.2 SAR Definition

The SAR definition is the time derivative (rate) of the incremental energy (dW) absorbed by (dissipated in) an incremental mass (dm) contained in a volume element (dv) of a given density (ρ). The equation description is as below:

$$SAR = \frac{d}{dt} \left(\frac{dW}{dm} \right) = \frac{d}{dt} \left(\frac{dW}{\rho dv} \right)$$

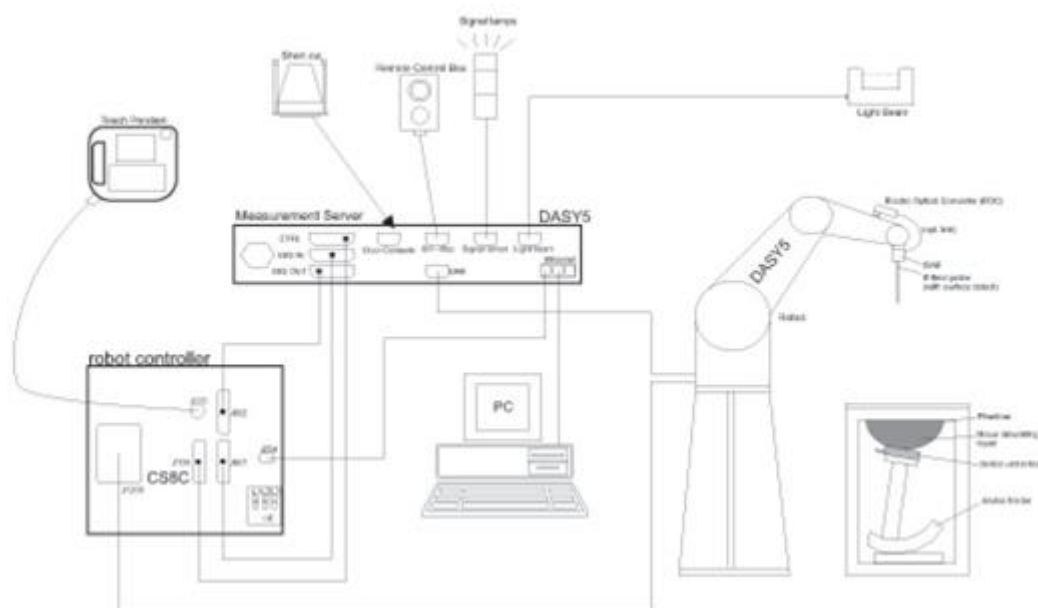
SAR is expressed in units of Watts per kilogram (W/kg)

$$SAR = \frac{\sigma |E|^2}{\rho}$$

Where: σ is the conductivity of the tissue, ρ is the mass density of the tissue and E is the RMS electrical field strength.

6. System Description and Setup

The DASY system used for performing compliance tests consists of the following items:



- A standard high precision 6-axis robot with controller, teach pendant and software. An arm extension for accommodating the data acquisition electronics (DAE).
- An isotropic Field probe optimized and calibrated for the targeted measurement.
- A data acquisition electronics (DAE) which performs the signal amplification, signal multiplexing, AD-conversion, offset measurements, mechanical surface detection, collision detection, etc. The unit is battery powered with standard or rechargeable batteries. The signal is optically transmitted to the EOC.
- The Electro-optical converter (EOC) performs the conversion from optical to electrical signals for the digital communication to the DAE. To use optical surface detection, a special version of the EOC is required. The EOC signal is transmitted to the measurement server.
- The function of the measurement server is to perform the time critical tasks such as signal filtering, control of the robot operation and fast movement interrupts.
- The Light Beam used is for probe alignment. This improves the (absolute) accuracy of the probe positioning.
- A computer running WinXP or Win7 and the DASY5 software.
- Remote control and teach pendant as well as additional circuitry for robot safety such as warning lamps, etc.
- The phantom, the device holder and other accessories according to the targeted measurement.

6.1 Test Site Location


Sporton International (Kunshan) Inc. is accredited to ISO/IEC 17025:2017 by American Association for Laboratory Accreditation with Certificate Number 5145.02.

Testing Laboratory			
Test Firm	Sporton International (Kunshan) Inc.		
Test Site Location	No. 1098, Pengxi North Road, Kunshan Economic Development Zone Jiangsu Province 215300 People's Republic of China TEL : +86-512-57900158 FAX : +86-512-57900958		
Test Site No.	Sporton Site No.	FCC Designation No.	FCC Test Firm Registration No.
	SAR07-KS	CN1257	314309

6.2 E-Field Probe

The SAR measurement is conducted with the dosimetric probe (manufactured by SPEAG). The probe is specially designed and calibrated for use in liquid with high permittivity. The dosimetric probe has special calibration in liquid at different frequency. This probe has a built in optical surface detection system to prevent from collision with phantom.

<EX3DV4 Probe>

Construction	Symmetric design with triangular core Built-in shielding against static charges PEEK enclosure material (resistant to organic solvents, e.g., DGBE)	
Frequency	10 MHz – >6 GHz Linearity: ± 0.2 dB (30 MHz – 6 GHz)	
Directivity	± 0.3 dB in TSL (rotation around probe axis) ± 0.5 dB in TSL (rotation normal to probe axis)	
Dynamic Range	10 μ W/g – >100 mW/g Linearity: ± 0.2 dB (noise: typically <1 μ W/g)	
Dimensions	Overall length: 337 mm (tip: 20 mm) Tip diameter: 2.5 mm (body: 12 mm) Typical distance from probe tip to dipole centers: 1 mm	

6.3 Data Acquisition Electronics (DAE)

The data acquisition electronics (DAE) consists of a highly sensitive electrometer-grade preamplifier with auto-zeroing, a channel and gain-switching multiplexer, a fast 16 bit AD-converter and a command decoder and control logic unit. Transmission to the measurement server is accomplished through an optical downlink for data and status information as well as an optical uplink for commands and the clock.


The input impedance of the DAE is 200 MOhm; the inputs are symmetrical and floating. Common mode rejection is above 80 dB.



Fig 5.1 Photo of DAE


6.4 Phantom

<SAM Twin Phantom>

Shell Thickness	2 ± 0.2 mm; Center ear point: 6 ± 0.2 mm	
Filling Volume	Approx. 25 liters	
Dimensions	Length: 1000 mm; Width: 500 mm; Height: adjustable feet	
Measurement Areas	Left Hand, Right Hand, Flat Phantom	

The bottom plate contains three pair of bolts for locking the device holder. The device holder positions are adjusted to the standard measurement positions in the three sections. A white cover is provided to tap the phantom during off-periods to prevent water evaporation and changes in the liquid parameters. On the phantom top, three reference markers are provided to identify the phantom position with respect to the robot.

<ELI Phantom>

Shell Thickness	2 ± 0.2 mm (sagging: <1%)	
Filling Volume	Approx. 30 liters	
Dimensions	Major ellipse axis: 600 mm Minor axis: 400 mm	

The ELI phantom is intended for compliance testing of handheld and body-mounted wireless devices in the frequency range of 30 MHz to 6 GHz. ELI4 is fully compatible with standard and all known tissue simulating liquids.

6.5 Device Holder

<Mounting Device for Hand-Held Transmitter>

In combination with the Twin SAM V5.0/V5.0c or ELI phantoms, the Mounting Device for Hand-Held Transmitters enables rotation of the mounted transmitter device to specified spherical coordinates. At the heads, the rotation axis is at the ear opening. Transmitter devices can be easily and accurately positioned according to IEC 62209-1, IEEE 1528, FCC, or other specifications. The device holder can be locked for positioning at different phantom sections (left head, right head, flat). And upgrade kit to Mounting Device to enable easy mounting of wider devices like big smart-phones, e-books, small tablets, etc. It holds devices with width up to 140 mm.



Mounting Device for Hand-Held Transmitters



Mounting Device Adaptor for Wide-Phones

<Mounting Device for Laptops and other Body-Worn Transmitters>

The extension is lightweight and made of POM, acrylic glass and foam. It fits easily on the upper part of the mounting device in place of the phone positioned. The extension is fully compatible with the SAM Twin and ELI phantoms.



Mounting Device for Laptops

7. Measurement Procedures

The measurement procedures are as follows:

<Conducted power measurement>

- (a) For WWAN power measurement, use base station simulator to configure EUT WWAN transmission in conducted connection with RF cable, at maximum power in each supported wireless interface and frequency band.
- (b) Read the WWAN RF power level from the base station simulator.
- (c) For WLAN/BT power measurement, use engineering software to configure EUT WLAN/BT continuously transmission, at maximum RF power in each supported wireless interface and frequency band
- (d) Connect EUT RF port through RF cable to the power meter, and measure WLAN/BT output power

<SAR measurement>

- (a) Use base station simulator to configure EUT WWAN transmission in radiated connection, and engineering software to configure EUT WLAN/BT continuously transmission, at maximum RF power, in the highest power channel.
- (b) Place the EUT in the positions as Appendix D demonstrates.
- (c) Set scan area, grid size and other setting on the DASY software.
- (d) Measure SAR results for the highest power channel on each testing position.
- (e) Find out the largest SAR result on these testing positions of each band
- (f) Measure SAR results for other channels in worst SAR testing position if the reported SAR of highest power channel is larger than 0.8 W/kg

According to the test standard, the recommended procedure for assessing the peak spatial-average SAR value consists of the following steps:

- (a) Power reference measurement
- (b) Area scan
- (c) Zoom scan
- (d) Power drift measurement

7.1 Spatial Peak SAR Evaluation

The procedure for spatial peak SAR evaluation has been implemented according to the test standard. It can be conducted for 1g and 10g, as well as for user-specific masses. The DASY software includes all numerical procedures necessary to evaluate the spatial peak SAR value.

The base for the evaluation is a "cube" measurement. The measured volume must include the 1g and 10g cubes with the highest averaged SAR values. For that purpose, the center of the measured volume is aligned to the interpolated peak SAR value of a previously performed area scan.

The entire evaluation of the spatial peak values is performed within the post-processing engine (SEMCAD). The system always gives the maximum values for the 1g and 10g cubes. The algorithm to find the cube with highest averaged SAR is divided into the following stages:

- (a) Extraction of the measured data (grid and values) from the Zoom Scan
- (b) Calculation of the SAR value at every measurement point based on all stored data (A/D values and measurement parameters)
- (c) Generation of a high-resolution mesh within the measured volume
- (d) Interpolation of all measured values from the measurement grid to the high-resolution grid
- (e) Extrapolation of the entire 3-D field distribution to the phantom surface over the distance from sensor to surface
- (f) Calculation of the averaged SAR within masses of 1g and 10g

7.2 Power Reference Measurement

The Power Reference Measurement and Power Drift Measurements are for monitoring the power drift of the device under test in the batch process. The minimum distance of probe sensors to surface determines the closest measurement point to phantom surface. This distance cannot be smaller than the distance of sensor calibration points to probe tip as defined in the probe properties.

7.3 Area Scan

The area scan is used as a fast scan in two dimensions to find the area of high field values, before doing a fine measurement around the hot spot. The sophisticated interpolation routines implemented in DASY software can find the maximum found in the scanned area, within a range of the global maximum. The range (in dB0) is specified in the standards for compliance testing. For example, a 2 dB range is required in IEEE standard 1528 and IEC 62209 standards, whereby 3 dB is a requirement when compliance is assessed in accordance with the ARIB standard (Japan), if only one zoom scan follows the area scan, then only the absolute maximum will be taken as reference. For cases where multiple maximums are detected, the number of zoom scans has to be increased accordingly.

Area scan parameters extracted from FCC KDB 865664 D01v01r04 SAR measurement 100 MHz to 6 GHz.

	≤ 3 GHz	> 3 GHz
Maximum distance from closest measurement point (geometric center of probe sensors) to phantom surface	5 ± 1 mm	$\frac{1}{2} \cdot \delta \cdot \ln(2) \pm 0.5$ mm
Maximum probe angle from probe axis to phantom surface normal at the measurement location	$30^\circ \pm 1^\circ$	$20^\circ \pm 1^\circ$
Maximum area scan spatial resolution: Δx_{Area} , Δy_{Area}	≤ 2 GHz: ≤ 15 mm $2 - 3$ GHz: ≤ 12 mm	$3 - 4$ GHz: ≤ 12 mm $4 - 6$ GHz: ≤ 10 mm
	When the x or y dimension of the test device, in the measurement plane orientation, is smaller than the above, the measurement resolution must be \leq the corresponding x or y dimension of the test device with at least one measurement point on the test device.	

7.4 Zoom Scan

Zoom scans are used to assess the peak spatial SAR values within a cubic averaging volume containing 1 gram and 10 gram of simulated tissue. The zoom scan measures points (refer to table below) within a cube whose base faces are centered on the maxima found in a preceding area scan job within the same procedure. When the measurement is done, the zoom scan evaluates the averaged SAR for 1 gram and 10 gram and displays these values next to the job's label.

Zoom scan parameters extracted from FCC KDB 865664 D01v01r04 SAR measurement 100 MHz to 6 GHz.

			≤ 3 GHz	> 3 GHz
Maximum zoom scan spatial resolution: $\Delta x_{\text{Zoom}}, \Delta y_{\text{Zoom}}$			≤ 2 GHz: ≤ 8 mm 2 – 3 GHz: ≤ 5 mm*	3 – 4 GHz: ≤ 5 mm* 4 – 6 GHz: ≤ 4 mm*
Maximum zoom scan spatial resolution, normal to phantom surface	uniform grid: $\Delta z_{\text{Zoom}}(n)$		≤ 5 mm	3 – 4 GHz: ≤ 4 mm 4 – 5 GHz: ≤ 3 mm 5 – 6 GHz: ≤ 2 mm
	graded grid	$\Delta z_{\text{Zoom}}(1)$: between 1 st two points closest to phantom surface	≤ 4 mm	3 – 4 GHz: ≤ 3 mm 4 – 5 GHz: ≤ 2.5 mm 5 – 6 GHz: ≤ 2 mm
		$\Delta z_{\text{Zoom}}(n>1)$: between subsequent points	$\leq 1.5 \cdot \Delta z_{\text{Zoom}}(n-1)$	
Minimum zoom scan volume	x, y, z		≥ 30 mm	3 – 4 GHz: ≥ 28 mm 4 – 5 GHz: ≥ 25 mm 5 – 6 GHz: ≥ 22 mm
Note: δ is the penetration depth of a plane-wave at normal incidence to the tissue medium; see draft standard IEEE P1528-2011 for details.				
* When zoom scan is required and the <i>reported</i> SAR from the <i>area scan based 1-g SAR estimation</i> procedures of KDB 447498 is ≤ 1.4 W/kg, ≤ 8 mm, ≤ 7 mm and ≤ 5 mm zoom scan resolution may be applied, respectively, for 2 GHz to 3 GHz, 3 GHz to 4 GHz and 4 GHz to 6 GHz.				

7.5 Volume Scan Procedures

The volume scan is used to assess overlapping SAR distributions for antennas transmitting in different frequency bands. It is equivalent to an oversized zoom scan used in standalone measurements. The measurement volume will be used to enclose all the simultaneous transmitting antennas. For antennas transmitting simultaneously in different frequency bands, the volume scan is measured separately in each frequency band. In order to sum correctly to compute the 1g aggregate SAR, the EUT remain in the same test position for all measurements and all volume scan use the same spatial resolution and grid spacing. When all volume scan were completed, the software, SEMCAD postprocessor can combine and subsequently superpose these measurement data to calculating the multiband SAR.

7.6 Power Drift Monitoring

All SAR testing is under the EUT install full charged battery and transmit maximum output power. In DASy measurement software, the power reference measurement and power drift measurement procedures are used for monitoring the power drift of EUT during SAR test. Both these procedures measure the field at a specified reference position before and after the SAR testing. The software will calculate the field difference in dB. If the power drifts more than 5%, the SAR will be retested.

8. Test Equipment List

Manufacturer	Name of Equipment	Type/Model	Serial Number	Calibration	
				Last Cal.	Due Date
SPEAG	750MHz System Validation Kit	D750V3	1087	2019/3/27	2022/3/24
SPEAG	835MHz System Validation Kit	D835V2	4d258	2020/5/7	2023/5/6
SPEAG	1900MHz System Validation Kit	D1900V2	5d170	2019/3/26	2022/3/24
SPEAG	2450MHz System Validation Kit	D2450V2	908	2019/3/25	2022/3/23
SPEAG	5000MHz System Validation Kit	D5GHzV2	1113	2019/9/24	2022/9/22
SPEAG	Data Acquisition Electronics	DAE4	1649	2021/2/3	2022/2/2
SPEAG	Dosimetric E-Field Probe	EX3DV4	7627	2021/2/10	2022/2/9
SPEAG	SAM Twin Phantom	SAM Twin	TP-2024	NCR	NCR
Testo	Thermo-Hygrometer	608-H1	1241332126	2021/1/7	2022/1/6
SPEAG	Phone Positioner	N/A	N/A	NCR	NCR
Anritsu	Radio Communication Analyzer	MT8821C	6201432831	2021/4/13	2022/4/12
Agilent	ENA Series Network Analyzer	E5071C	MY46106933	2021/7/31	2022/7/30
SPEAG	Dielectric Probe Kit	DAK-3.5	1144	2020/12/2	2021/12/1
Anritsu	Vector Signal Generator	MG3710A	6201682672	2021/1/7	2022/1/6
R&S	CBT BLUETOOTH TESTER	CBT	101246	2021/4/12	2022/4/11
FLUKE	DIGITAC THERMOMETER	51II	97240029	2021/8/13	2022/8/12
Rohde & Schwarz	Power Meter	NRVD	102081	2021/8/12	2022/8/11
Rohde & Schwarz	Power Sensor	NRV-Z5	100538	2021/8/12	2022/8/11
Rohde & Schwarz	Power Sensor	NRV-Z5	100539	2021/8/12	2022/8/11
ARRA	Power Divider	A3200-2	N/A	NA	NA
EXA	Spectrum Analyzer	FSV7	101632	2021/1/7	2022/1/6
BONN	POWER AMPLIFIER	BLMA 0830-3	087193A	2021/8/12	2022/8/11
BONN	POWER AMPLIFIER	BLMA 2060-2	087193B	2021/7/31	2022/7/30
Agilent	Dual Directional Coupler	778D	20500	Note1	
Agilent	Dual Directional Coupler	11691D	MY48151020	Note1	
MCL	Attenuation1	BW-S10W5+	N/A	Note1	
MCL	Attenuation2	BW-S10W5+	N/A	Note1	
MCL	Attenuation3	BW-S10W5+	N/A	Note1	

General Note:

1. Prior to system verification and validation, the path loss from the signal generator to the system check source and the power meter, which includes the amplifier, cable, attenuator and directional coupler, was measured by the network analyzer. The reading of the power meter was offset by the path loss difference between the path to the power meter and the path to the system check source to monitor the actual power level fed to the system check source.
2. The dipole calibration interval can be extended to 3 years with justification according to KDB 865664 D01. The dipoles are also not physically damaged, or repaired during the interval. The justification data in appendix C can be found which the return loss is < -20dB, within 20% of prior calibration, the impedance is within 5 ohm of prior calibration for each dipole.

9. System Verification

9.1 Tissue Verification

The tissue dielectric parameters of tissue-equivalent media used for SAR measurements must be characterized within a temperature range of 18°C to 25°C, measured with calibrated instruments and apparatuses, such as network analyzers and temperature probes. The temperature of the tissue-equivalent medium during SAR measurement must also be within 18°C to 25°C and within $\pm 2^\circ\text{C}$ of the temperature when the tissue parameters are characterized. The tissue dielectric measurement system must be calibrated before use. The dielectric parameters must be measured before the tissue-equivalent medium is used in a series of SAR measurements.

The liquid tissue depth was at least 15cm in the phantom for all SAR testing

<Tissue Dielectric Parameter Check Results>

Frequency (MHz)	Liquid Temp. (°C)	Conductivity (σ)	Permittivity (ϵ_r)	Conductivity Target (σ)	Permittivity Target (ϵ_r)	Delta (σ) (%)	Delta (ϵ_r) (%)	Limit (%)	Date
750	22.8	0.898	42.302	0.89	41.90	0.90	0.96	± 5	2021.11.15
835	22.8	0.929	42.039	0.90	41.50	3.22	1.30	± 5	2021.11.16
1900	22.6	1.443	40.364	1.40	40.00	3.07	0.91	± 5	2021.11.17
2450	22.9	1.868	40.798	1.80	39.20	3.78	4.08	± 5	2021.11.18
5250	22.8	4.578	36.306	4.71	35.90	-2.80	1.13	± 5	2021.11.19
5600	22.7	4.950	35.731	5.07	35.50	-2.37	0.65	± 5	2021.11.20
5750	22.6	5.132	35.585	5.22	35.40	-1.69	0.52	± 5	2021.11.21

10. RF Exposure Positions

10.1 Ear and handset reference point

Figure 10.1.1 shows the front, back, and side views of the SAM phantom. The center-of-mouth reference point is labeled "M," the left ear reference point (ERP) is marked "LE," and the right ERP is marked "RE." Each ERP is 15 mm along the B-M (back-mouth) line behind the entrance-to-ear-canal (EEC) point, as shown in Figure 10.1.2. The Reference Plane is defined as passing through the two ear reference points and point M. The line N-F (neck-front), also called the reference pivoting line, is normal to the Reference Plane and perpendicular to both a line passing through RE and LE and the B-M line (see Figure 10.1.3). Both N-F and B-M lines should be marked on the exterior of the phantom shell to facilitate handset positioning. Posterior to the N-F line the ear shape is a flat surface with 6 mm thickness at each ERP, and forward of the N-F line the ear is truncated, as illustrated in Figure 10.1.2. The ear truncation is introduced to preclude the ear lobe from interfering with handset tilt, which could lead to unstable positioning at the cheek.

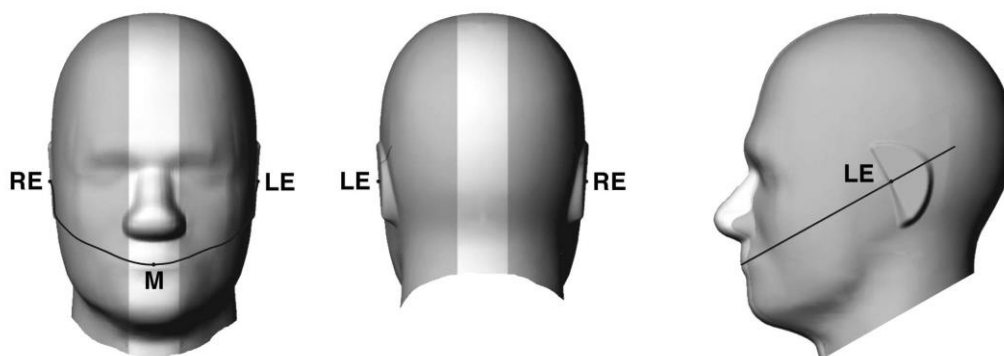


Fig 10.1.1 Front, back, and side views of SAM twin phantom

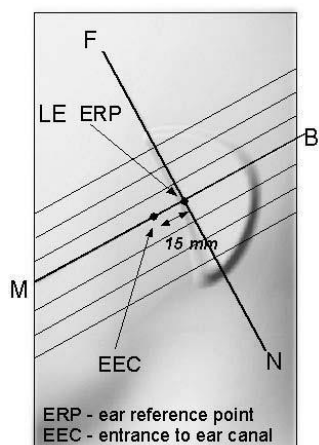


Fig 10.1.2 Close-up side view of phantom showing the ear region.

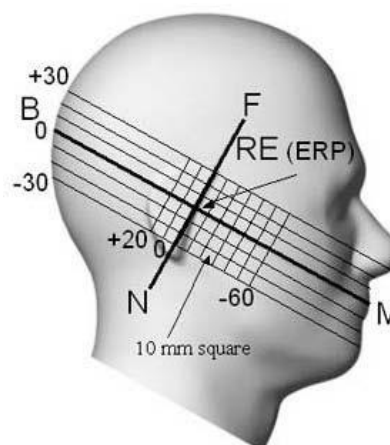


Fig 10.1.3 Side view of the phantom showing relevant markings and seven cross-sectional plane locations

10.2 Definition of the cheek position

1. Ready the handset for talk operation, if necessary. For example, for handsets with a cover piece (flip cover), open the cover. If the handset can transmit with the cover closed, both configurations must be tested.
2. Define two imaginary lines on the handset—the vertical centerline and the horizontal line. The vertical centerline passes through two points on the front side of the handset—the midpoint of the width w_t of the handset at the level of the acoustic output (point A in Figure 10.2.1 and Figure 10.2.2), and the midpoint of the width w_b of the bottom of the handset (point B). The horizontal line is perpendicular to the vertical centerline and passes through the center of the acoustic output (see Figure 10.2.1). The two lines intersect at point A. Note that for many handsets, point A coincides with the center of the acoustic output; however, the acoustic output may be located elsewhere on the horizontal line. Also note that the vertical centerline is not necessarily parallel to the front face of the handset (see Figure 10.2.2), especially for clamshell handsets, handsets with flip covers, and other irregularly-shaped handsets.
3. Position the handset close to the surface of the phantom such that point A is on the (virtual) extension of the line passing through points RE and LE on the phantom (see Figure 10.2.3), such that the plane defined by the vertical centerline and the horizontal line of the handset is approximately parallel to the sagittal plane of the phantom.
4. Translate the handset towards the phantom along the line passing through RE and LE until handset point A touches the pinna at the ERP.
5. While maintaining the handset in this plane, rotate it around the LE-RE line until the vertical centerline is in the plane normal to the plane containing B-M and N-F lines, i.e., the Reference Plane.
6. Rotate the handset around the vertical centerline until the handset (horizontal line) is parallel to the N-F line.
7. While maintaining the vertical centerline in the Reference Plane, keeping point A on the line passing through RE and LE, and maintaining the handset contact with the pinna, rotate the handset about the N-F line until any point on the handset is in contact with a phantom point below the pinna on the cheek. See Figure 10.2.3. The actual rotation angles should be documented in the test report.

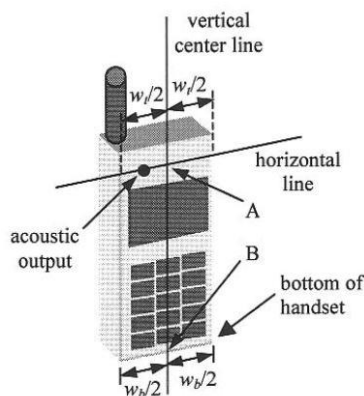


Fig 10.2.1 Handset vertical and horizontal reference lines—"fixed case"

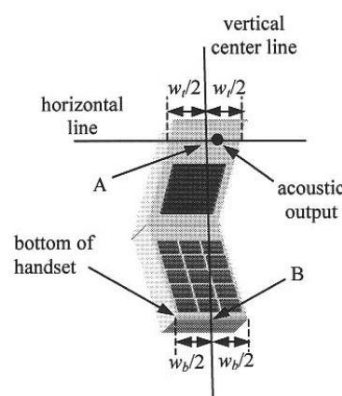


Fig 10.2.2 Handset vertical and horizontal reference lines—"clam-shell case"

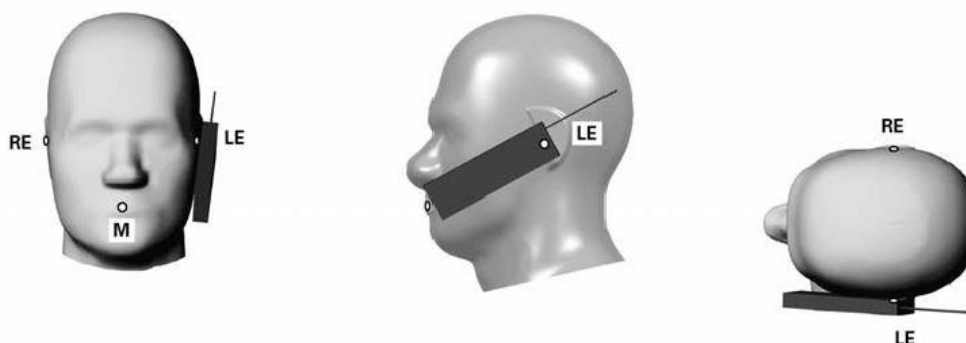


Fig 10.2.3 cheek or touch position. The reference points for the right ear (RE), left ear (LE), and mouth (M), which establish the Reference Plane for handset positioning, are indicated.

10.3 Definition of the tilt position

1. Ready the handset for talk operation, if necessary. For example, for handsets with a cover piece (flip cover), open the cover. If the handset can transmit with the cover closed, both configurations must be tested.
2. While maintaining the orientation of the handset, move the handset away from the pinna along the line passing through RE and LE far enough to allow a rotation of the handset away from the cheek by 15°.
3. Rotate the handset around the horizontal line by 15°.
4. While maintaining the orientation of the handset, move the handset towards the phantom on the line passing through RE and LE until any part of the handset touches the ear. The tilt position is obtained when the contact point is on the pinna. See Figure 10.3.1. If contact occurs at any location other than the pinna, e.g., the antenna at the back of the phantom head, the angle of the handset should be reduced. In this case, the tilt position is obtained if any point on the handset is in contact with the pinna and a second point

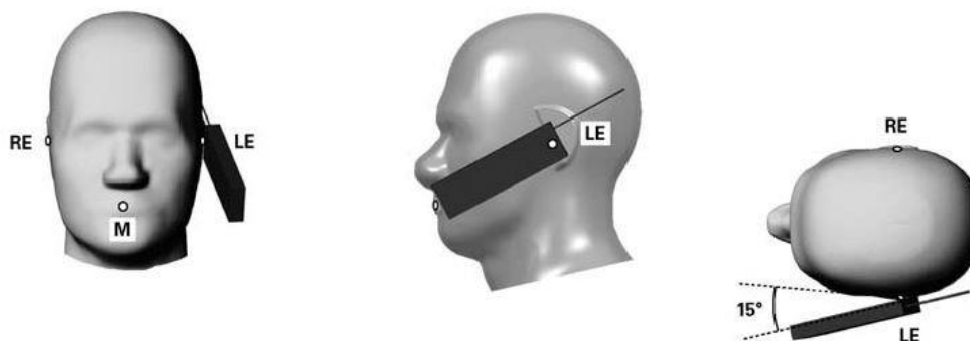


Fig 10.3.1 Tilt position. The reference points for the right ear (RE), left ear (LE), and mouth (M), which define the Reference Plane for handset positioning, are indicated.

10.4 Body Worn Accessory

Body-worn operating configurations are tested with the belt-clips and holsters attached to the device and positioned against a flat phantom in a normal use configuration (see Figure 10.4). Per KDB648474 D04v01r03, body-worn accessory exposure is typically related to voice mode operations when handsets are carried in body-worn accessories. The body-worn accessory procedures in FCC KDB 447498 D01v06 should be used to test for body-worn accessory SAR compliance, without a headset connected to it. This enables the test results for such configuration to be compatible with that required for hotspot mode when the body-worn accessory test separation distance is greater than or equal to that required for hotspot mode, when applicable. When the reported SAR for body-worn accessory, measured without a headset connected to the handset is $> 1.2 \text{ W/kg}$, the highest reported SAR configuration for that wireless mode and frequency band should be repeated for that body-worn accessory with a headset attached to the handset.

Accessories for body-worn operation configurations are divided into two categories: those that do not contain metallic components and those that do contain metallic components. When multiple accessories that do not contain metallic components are supplied with the device, the device is tested with only the accessory that dictates the closest spacing to the body. Then multiple accessories that contain metallic components are test with the device with each accessory. If multiple accessories share an identical metallic component (i.e. the same metallic belt-clip used with different holsters with no other metallic components) only the accessory that dictates the closest spacing to the body is tested.

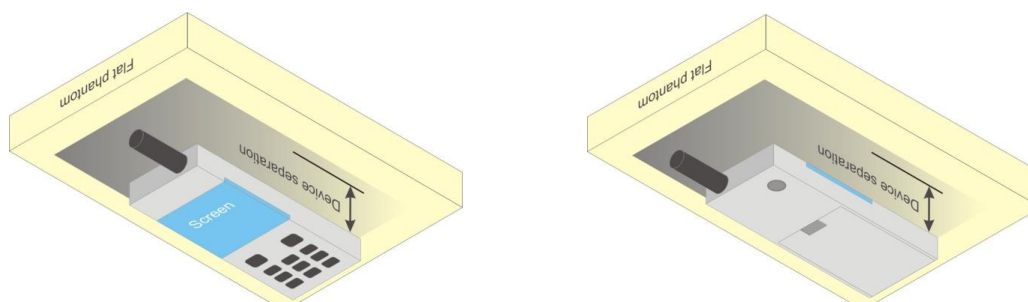


Fig 10.4 Body Worn Position



10.5 Product Specific Exposure

For smart phones with a display diagonal dimension > 15.0 cm or an overall diagonal dimension > 16.0 cm that provide similar mobile web access and multimedia support found in mini-tablets or UMPC mini-tablets that support voice calls next to the ear, According to KDB648474 D04v01r03, the following phablet procedures should be applied to evaluate SAR compliance for each applicable wireless modes and frequency band. Devices marketed as phablets, regardless of form factors and operating characteristics must be tested as a phablet to determine SAR compliance

1. The normally required head and body-worn accessory SAR test procedures for handsets, including hotspot mode, must be applied.
2. The UMPC mini-tablet procedures must also be applied to test the SAR of all surfaces and edges with an antenna located at ≤ 25 mm from that surface or edge, in direct contact with a flat phantom, for 10-g extremity SAR according to the body-equivalent tissue dielectric parameters in KDB 865664 to address interactive hand use exposure conditions.⁶ The UMPC mini-tablet 1-g SAR at 5 mm is not required. When hotspot mode applies, 10-g extremity SAR is required only for the surfaces and edges with hotspot mode 1-g reported SAR > 1.2 W/kg.

10.6 Wireless Router

Some battery-operated handsets have the capability to transmit and receive user through simultaneous transmission of WIFI simultaneously with a separate licensed transmitter. The FCC has provided guidance in FCC KDB Publication 941225 D06 v02r01 where SAR test considerations for handsets ($L \times W \geq 9$ cm x 5 cm) are based on a composite test separation distance of 10mm from the front, back and edges of the device containing transmitting antennas within 2.5cm of their edges, determined from general mixed use conditions for this type of devices. Since the hotspot SAR results may overlap with the body-worn accessory SAR requirements, the more conservative configurations can be considered, thus excluding some body-worn accessory SAR tests.

When the user enables the personal wireless router functions for the handset, actual operations include simultaneous transmission of both the WIFI transmitter and another licensed transmitter. Both transmitters often do not transmit at the same transmitting frequency and thus cannot be evaluated for SAR under actual use conditions due to the limitations of the SAR assessment probes. Therefore, SAR must be evaluated for each frequency transmission and mode separately and spatially summed with the WIFI transmitter according to FCC KDB Publication 447498 D01v06 publication procedures. The "Portable Hotspot" feature on the handset was NOT activated during SAR assessments, to ensure the SAR measurements were evaluated for a single transmission frequency RF signal at a time.

11. GSM/UMTS/CDMA/LTE Output Power (Unit: dBm)

<GSM Conducted Power>

1. Per KDB 447498 D01v06, the maximum output power channel is used for SAR testing and for further SAR test reduction.
2. Per KDB 941225 D01v03r01, for SAR test reduction for GSM / GPRS / EDGE modes is determined by the source-based time-averaged output power including tune-up tolerance. The mode with highest specified time-averaged output power should be tested for SAR compliance in the applicable exposure conditions. For modes with the same specified maximum output power and tolerance, the higher number time-slot configuration should be tested. Therefore, the GPRS (4Tx slots) for GSM850 and GPRS (3Tx slots) for GSM1900 is considered as the primary mode respectively.
3. Other configurations of GSM / GPRS / EDGE are considered as secondary modes. The 3G SAR test reduction procedure is applied, when the maximum output power and tune-up tolerance specified for production units in a secondary mode is $\leq \frac{1}{4}$ dB higher than the primary mode, SAR measurement is not required for the secondary mode

GSM850-Ant 0	Burst Average Power (dBm)			Tune-up Limit (dBm)	Frame-Average Power (dBm)			Tune-up Limit (dBm)
TX Channel	128	189	251		128	189	251	
Frequency (MHz)	824.2	836.4	848.8		824.2	836.4	848.8	
GSM 1 Tx slot	29.78	29.48	29.67	30.50	20.78	20.48	20.67	21.50
GPRS 1 Tx slot	29.87	29.53	29.74	30.50	20.87	20.53	20.74	21.50
GPRS 2 Tx slots	27.75	27.58	27.74	28.50	21.75	21.58	21.74	22.50
GPRS 3 Tx slots	25.92	25.80	26.21	27.00	21.66	21.54	21.95	22.74
GPRS 4 Tx slots	24.73	24.89	24.81	26.00	21.73	21.89	21.81	23.00
EDGE 1 Tx slot	22.97	22.78	23.02	24.00	13.97	13.78	14.02	15.00
EDGE 2 Tx slots	21.42	21.29	21.54	22.50	15.42	15.29	15.54	16.50
EDGE 3 Tx slots	20.49	20.29	20.47	21.50	16.23	16.03	16.21	17.24
EDGE 4 Tx slots	19.47	19.28	19.56	20.50	16.47	16.28	16.56	17.50

GSM1900-Ant 1	Burst Average Power (dBm)			Tune-up Limit (dBm)	Frame-Average Power (dBm)			Tune-up Limit (dBm)
TX Channel	512	661	810		512	661	810	
Frequency (MHz)	1850.2	1880	1909.8		1850.2	1880	1909.8	
GSM 1 Tx slot	25.97	26.01	25.94	27.00	16.97	17.01	16.94	18.00
GPRS 1 Tx slot	26.06	26.05	25.95	27.00	17.06	17.05	16.95	18.00
GPRS 2 Tx slots	23.42	23.37	23.42	24.50	17.42	17.37	17.42	18.50
GPRS 3 Tx slots	22.53	22.57	22.34	23.50	18.27	18.31	18.08	19.24
GPRS 4 Tx slots	20.53	20.47	20.69	21.50	17.53	17.47	17.69	18.50
EDGE 1 Tx slot	21.51	21.52	21.68	22.50	12.51	12.52	12.68	13.50
EDGE 2 Tx slots	20.01	19.98	20.12	21.00	14.01	13.98	14.12	15.00
EDGE 3 Tx slots	19.05	19.12	19.21	20.00	14.79	14.86	14.95	15.74
EDGE 4 Tx slots	17.57	17.55	17.66	18.50	14.57	14.55	14.66	15.50

<WCDMA Conducted Power>

1. The following tests were conducted according to the test requirements outlines in 3GPP TS 34.121 specification.
2. The procedures in KDB 941225 D01v03r01 are applied for 3GPP Rel. 6 HSPA to configure the device in the required sub-test mode(s) to determine SAR test exclusion.
3. For DC-HSDPA, the device was configured according to the H-Set 12, Fixed Reference Channel (FRC) configuration in Table C.8.1.12 of 3GPP TS 34.121-1, with the primary and the secondary serving HS-DSCH Cell enabled during the power measurement.

A summary of these settings are illustrated below:

HSDPA Setup Configuration:

- a. The EUT was connected to Base Station Agilent E5515C referred to the Setup Configuration.
- b. The RF path losses were compensated into the measurements.
- c. A call was established between EUT and Base Station with following setting:
 - i. Set Gain Factors (β_c and β_d) and parameters were set according to each
 - ii. Specific sub-test in the following table, C10.1.4, quoted from the TS 34.121
 - iii. Set RMC 12.2Kbps + HSDPA mode.
 - iv. Set Cell Power = -86 dBm
 - v. Set HS-DSCH Configuration Type to FRC (H-set 1, QPSK)
 - vi. Select HSDPA Uplink Parameters
 - vii. Set Delta ACK, Delta NACK and Delta CQI = 8
 - viii. Set Ack-Nack Repetition Factor to 3
 - ix. Set CQI Feedback Cycle (k) to 4 ms
 - x. Set CQI Repetition Factor to 2
 - xi. Power Ctrl Mode = All Up bits
- d. The transmitted maximum output power was recorded.

Table C.10.1.4: β values for transmitter characteristics tests with HS-DPCCH

Sub-test	β_c	β_d	β_d (SF)	β_c/β_d	β_{hs} (Note 1, Note 2)	CM (dB) (Note 3)	MPR (dB) (Note 3)
1	2/15	15/15	64	2/15	4/15	0.0	0.0
2	12/15 (Note 4)	15/15 (Note 4)	64	12/15 (Note 4)	24/15	1.0	0.0
3	15/15	8/15	64	15/8	30/15	1.5	0.5
4	15/15	4/15	64	15/4	30/15	1.5	0.5

Note 1: Δ_{ACK} , Δ_{NACK} and $\Delta_{CQI} = 30/15$ with $\beta_{hs} = 30/15 * \beta_c$.

Note 2: For the HS-DPCCH power mask requirement test in clause 5.2C, 5.7A, and the Error Vector Magnitude (EVM) with HS-DPCCH test in clause 5.13.1A, and HSDPA EVM with phase discontinuity in clause 5.13.1AA, Δ_{ACK} and $\Delta_{NACK} = 30/15$ with $\beta_{hs} = 30/15 * \beta_c$, and $\Delta_{CQI} = 24/15$ with $\beta_{hs} = 24/15 * \beta_c$.

Note 3: CM = 1 for $\beta_c/\beta_d = 12/15$, $\beta_{hs}/\beta_c = 24/15$. For all other combinations of DPDCH, DPCCH and HS-DPCCH the MPR is based on the relative CM difference. This is applicable for only UEs that support HSDPA in release 6 and later releases.

Note 4: For subtest 2 the β_c/β_d ratio of 12/15 for the TFC during the measurement period (TF1, TF0) is achieved by setting the signalled gain factors for the reference TFC (TF1, TF1) to $\beta_c = 11/15$ and $\beta_d = 15/15$.

Setup Configuration

HSUPA Setup Configuration:

- a. The EUT was connected to Base Station Agilent E5515C referred to the Setup Configuration.
- b. The RF path losses were compensated into the measurements.
- c. A call was established between EUT and Base Station with following setting * :
 - i. Call Configs = 5.2B, 5.9B, 5.10B, and 5.13.2B with QPSK
 - ii. Set the Gain Factors (β_c and β_d) and parameters (AG Index) were set according to each specific sub-test in the following table, C11.1.3, quoted from the TS 34.121
 - iii. Set Cell Power = -86 dBm
 - iv. Set Channel Type = 12.2k + HSPA
 - v. Set UE Target Power
 - vi. Power Ctrl Mode= Alternating bits
 - vii. Set and observe the E-TFCI
 - viii. Confirm that E-TFCI is equal to the target E-TFCI of 75 for sub-test 1, and other subtest's E-TFCI
- d. The transmitted maximum output power was recorded.

Table C.11.1.3: β values for transmitter characteristics tests with HS-DPCCH and E-DCH

Sub-test	β_c	β_d	β_d (SF)	β_c/β_d	β_{HS} (Note 1)	β_{ec}	β_{ed} (Note 4) (Note 5)	β_{ed} (SF)	β_{ed} (Codes)	CM (dB) (Note 2)	MPR (dB) (Note 2) (Note 6)	AG Index (Note 5)	E-TFCI
1	11/15 (Note 3)	15/15 (Note 3)	64	11/15 (Note 3)	22/15	209/25	1309/225	4	1	1.0	0.0	20	75
2	6/15	15/15	64	6/15	12/15	12/15	94/75	4	1	3.0	2.0	12	67
3	15/15	9/15	64	15/9	30/15	30/15	β_{ed1} : 47/15 β_{ed2} : 47/15	4	2	2.0	1.0	15	92
4	2/15	15/15	64	2/15	4/15	2/15	56/75	4	1	3.0	2.0	17	71
5	15/15	0	-	-	5/15	5/15	47/15	4	1	1.0	0.0	12	67

Note 1: For sub-test 1 to 4, Δ_{ACK} , Δ_{NACK} and $\Delta_{CQI} = 30/15$ with $\beta_{hs} = 30/15 * \beta_c$. For sub-test 5, Δ_{ACK} , Δ_{NACK} and $\Delta_{CQI} = 5/15$ with $\beta_{hs} = 5/15 * \beta_c$.

Note 2: CM = 1 for $\beta_d/\beta_c = 12/15$, $\beta_{hs}/\beta_c = 24/15$. For all other combinations of DPDCH, DPCCH, HS-DPCCH, E-DPDCH and E-DPCCH the MPR is based on the relative CM difference.

Note 3: For subtest 1 the β_c/β_d ratio of 11/15 for the TFC during the measurement period (TF1, TF0) is achieved by setting the signalled gain factors for the reference TFC (TF1, TF1) to $\beta_c = 10/15$ and $\beta_d = 15/15$.

Note 4: In case of testing by UE using E-DPDCH Physical Layer category 1, Sub-test 3 is omitted according to TS25.306 Table 5.1g.

Note 5: β_{ed} can not be set directly; it is set by Absolute Grant Value.

Note 6: For subtests 2, 3 and 4, UE may perform E-DPDCH power scaling at max power which could results in slightly smaller MPR values.

Setup Configuration

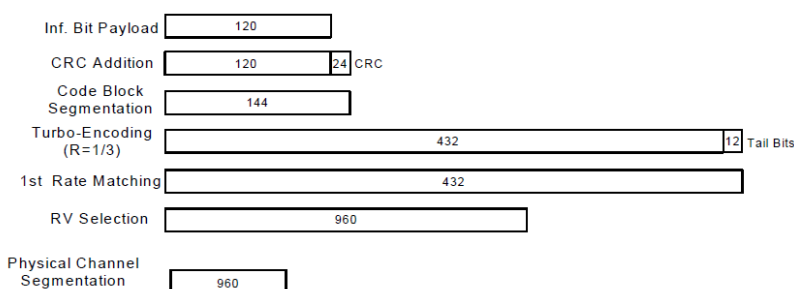
DC-HSDPA 3GPP release 8 Setup Configuration:

- a. The EUT was connected to Base Station Agilent E5515C referred to the Setup Configuration below
- b. The RF path losses were compensated into the measurements.
- c. A call was established between EUT and Base Station with following setting:
 - i. Set RMC 12.2Kbps + HSDPA mode.
 - ii. Set Cell Power = -25 dBm
 - iii. Set HS-DSCH Configuration Type to FRC (H-set 12, QPSK)
 - iv. Select HSDPA Uplink Parameters
 - v. Set Gain Factors (β_c and β_d) and parameters were set according to each Specific sub-test in the following table, C10.1.4, quoted from the TS 34.121
 - a). Subtest 1: $\beta_c/\beta_d=2/15$
 - b). Subtest 2: $\beta_c/\beta_d=12/15$
 - c). Subtest 3: $\beta_c/\beta_d=15/8$
 - d). Subtest 4: $\beta_c/\beta_d=15/4$
 - vi. Set Delta ACK, Delta NACK and Delta CQI = 8
 - vii. Set Ack-Nack Repetition Factor to 3
 - viii. Set CQI Feedback Cycle (k) to 4 ms
 - ix. Set CQI Repetition Cycle to 2
 - x. Power Ctrl Mode = All Up bits
- d. The transmitted maximum output power was recorded.

The following tests were conducted according to the test requirements outlines in 3GPP TS 34.121 specification.
A summary of these settings are illustrated below:

C.8.1.12 Fixed Reference Channel Definition H-Set 12
Table C.8.1.12: Fixed Reference Channel H-Set 12

Parameter	Unit	Value
Nominal Avg. Inf. Bit Rate	kbps	60
Inter-TTI Distance	TTI's	1
Number of HARQ Processes	Processes	6
Information Bit Payload (N_{INF})	Bits	120
Number Code Blocks	Blocks	1
Binary Channel Bits Per TTI	Bits	960
Total Available SML's in UE	SML's	19200
Number of SML's per HARQ Proc.	SML's	3200
Coding Rate		0.15
Number of Physical Channel Codes	Codes	1
Modulation		QPSK
Note 1: The RMC is intended to be used for DC-HSDPA mode and both cells shall transmit with identical parameters as listed in the table.		
Note 2: Maximum number of transmission is limited to 1, i.e., retransmission is not allowed. The redundancy and constellation version 0 shall be used.		


Figure C.8.19: Coding rate for Fixed reference Channel H-Set 12 (QPSK)
Setup Configuration

<WCDMA Conducted Power>
General Note:

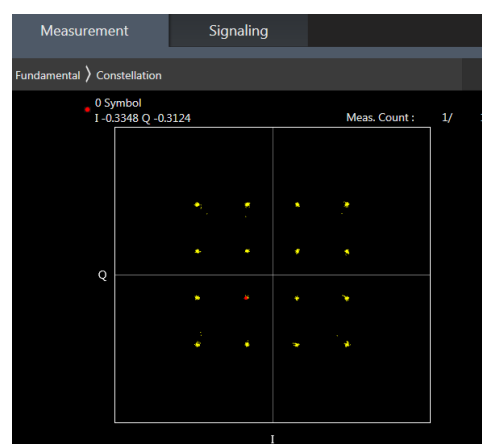
1. Per KDB 941225 D01v03r01, for SAR testing is measured using a 12.2 kbps RMC with TPC bits configured to all "1's".
2. Per KDB 941225 D01v03r01, RMC 12.2kbps setting is used to evaluate SAR. The maximum output power and tune-up tolerance specified for production units in HSDPA / HSUPA / DC-HSDPA is $\leq \frac{1}{4}$ dB higher than RMC 12.2Kbps or when the highest reported SAR of the RMC12.2Kbps is scaled by the ratio of specified maximum output power and tune-up tolerance of HSDPA / HSUPA / DC-HSDPA to RMC12.2Kbps and the adjusted SAR is ≤ 1.2 W/kg, SAR measurement is not required for HSDPA / HSUPA / DC-HSDPA, and according to the following RF output power, the output power results of the secondary modes (HSUPA, HSDPA, DC-HSDPA) are less than $\frac{1}{4}$ dB higher than the primary modes; therefore, SAR measurement is not required for HSDPA / HSUPA / DC-HSDPA.

Band		WCDMA V-Ant 0			Tune-up Limit (dBm)
TX Channel		4132	4182	4233	
Rx Channel		4357	4407	4458	
Frequency (MHz)		826.4	836.4	846.6	
3GPP Rel 99	AMR 12.2Kbps	23.26	23.30	23.24	24.00
3GPP Rel 99	RMC 12.2Kbps	23.28	23.32	23.27	24.00
3GPP Rel 6	HSDPA Subtest-1	22.30	22.26	22.28	23.00
3GPP Rel 6	HSDPA Subtest-2	22.30	22.28	22.27	23.00
3GPP Rel 6	HSDPA Subtest-3	21.80	21.77	21.79	22.50
3GPP Rel 6	HSDPA Subtest-4	21.83	21.79	21.76	22.50
3GPP Rel 8	DC-HSDPA Subtest-1	22.24	22.26	22.23	23.00
3GPP Rel 8	DC-HSDPA Subtest-2	22.23	22.27	22.21	23.00
3GPP Rel 8	DC-HSDPA Subtest-3	21.79	21.81	21.87	22.50
3GPP Rel 8	DC-HSDPA Subtest-4	21.73	21.79	21.68	22.50
3GPP Rel 6	HSUPA Subtest-1	22.26	22.25	22.21	23.00
3GPP Rel 6	HSUPA Subtest-2	20.26	20.28	20.25	21.00
3GPP Rel 6	HSUPA Subtest-3	21.31	21.25	21.23	22.00
3GPP Rel 6	HSUPA Subtest-4	20.26	20.26	20.23	21.00
3GPP Rel 6	HSUPA Subtest-5	22.30	22.30	22.20	23.00

<LTE Conducted Power>

General Note:

1. Anritsu MT8820C base station simulator was used to setup the connection with EUT; the frequency band, channel bandwidth, RB allocation configuration, modulation type are set in the base station simulator to configure EUT transmitting at maximum power and at different configurations which are requested to be reported to FCC, for conducted power measurement and SAR testing.
2. Per KDB 941225 D05v02r05, when a properly configured base station simulator is used for the SAR and power measurements, spectrum plots for each RB allocation and offset configuration is not required.
3. Per KDB 941225 D05v02r05, start with the largest channel bandwidth and measure SAR for QPSK with 1 RB allocation, using the RB offset and required test channel combination with the highest maximum output power for RB offsets at the upper edge, middle and lower edge of each required test channel.
4. Per KDB 941225 D05v02r05, 50% RB allocation for QPSK SAR testing follows 1RB QPSK allocation procedure.
5. Per KDB 941225 D05v02r05, For QPSK with 100% RB allocation, SAR is not required when the highest maximum output power for 100 % RB allocation is less than the highest maximum output power in 50% and 1 RB allocations and the highest reported SAR for 1 RB and 50% RB allocation are ≤ 0.8 W/kg. Otherwise, SAR is measured for the highest output power channel; and if the reported SAR is > 1.45 W/kg, the remaining required test channels must also be tested.
6. Per KDB 941225 D05v02r05, 16QAM output power for each RB allocation configuration is $>$ not $\frac{1}{2}$ dB higher than the same configuration in QPSK and the reported SAR for the QPSK configuration is ≤ 1.45 W/kg; Per KDB 941225 D05v02r05, 16QAM SAR testing is not required.
7. Per KDB 941225 D05v02r05, Smaller bandwidth output power for each RB allocation configuration is $>$ not $\frac{1}{2}$ dB higher than the same configuration in the largest supported bandwidth, and the reported SAR for the largest supported bandwidth is ≤ 1.45 W/kg; Per KDB 941225 D05v02r05, smaller bandwidth SAR testing is not required.
8. For LTE B5/B12 the maximum bandwidth does not support three non-overlapping channels, per KDB 941225 D05v02r05, when a device supports overlapping channel assignment in a channel bandwidth configuration, the middle channel of the group of overlapping channels should be selected for testing.
9. According to 2017 TCB workshop, for 64 QAM and 16 QAM should be verified by checking the signal constellation with a call box to avoid incorrect maximum power levels due to MPR and other requirements associated with signal modulation, and the following figure is taken from the "Fundamental Measurement >> Modulation Analysis >> constellation" mode of the device connect to the MT8821C base station, therefore, the device 64QAM and 16QAM signal modulation are correct.


64QAM

16QAM

<LTE Band 5>

BW [MHz]	Modulation	RB Size	RB Offset	Power Low Ch. / Freq.	Power Middle Ch. / Freq.	Power High Ch. / Freq.	Tune-up limit (dBm)	MPR (dB)
Channel				20450	20525	20600		
Frequency (MHz)				829	836.5	844		
10	QPSK	1	0	22.69	22.80	22.70	24	0
10	QPSK	1	25	22.64	22.67	22.77		
10	QPSK	1	49	22.63	22.79	22.72		
10	QPSK	25	0	21.72	21.87	21.80	23	1
10	QPSK	25	12	21.82	21.82	21.79		
10	QPSK	25	25	21.79	21.80	21.85		
10	QPSK	50	0	21.81	21.88	21.80	23	1
10	16QAM	1	0	21.97	22.03	22.13		
10	16QAM	1	25	22.00	22.06	22.19		
10	16QAM	1	49	22.01	22.14	22.16	22	2
10	16QAM	25	0	20.74	20.73	20.86		
10	16QAM	25	12	20.82	20.84	20.90		
10	16QAM	25	25	20.73	20.81	20.89	22	2
10	16QAM	50	0	20.80	20.86	20.89		
10	64QAM	1	0	20.88	20.89	20.98		
10	64QAM	1	25	20.78	20.84	20.98	22	2
10	64QAM	1	49	20.88	20.97	20.98		
10	64QAM	25	0	19.72	19.77	19.88		
10	64QAM	25	12	19.79	19.84	19.93	21	3
10	64QAM	25	25	19.76	19.82	19.93		
10	64QAM	50	0	19.79	19.85	19.92		
Channel				20425	20525	20625		
Frequency (MHz)				826.5	836.5	846.5		
5	QPSK	1	0	22.72	22.71	22.75	24	0
5	QPSK	1	12	22.69	22.73	22.66		
5	QPSK	1	24	22.72	22.73	22.75		
5	QPSK	12	0	21.78	21.72	21.89	23	1
5	QPSK	12	7	21.77	21.81	21.86		
5	QPSK	12	13	21.75	21.81	21.92		
5	QPSK	25	0	21.77	21.83	21.84	23	1
5	16QAM	1	0	22.07	22.07	22.12		
5	16QAM	1	12	22.02	22.01	22.17		
5	16QAM	1	24	22.03	22.12	22.17	22	2
5	16QAM	12	0	20.80	20.74	20.88		
5	16QAM	12	7	20.82	20.84	20.91		
5	16QAM	12	13	20.79	20.84	20.97	22	2
5	16QAM	25	0	20.81	20.83	20.89		
5	64QAM	1	0	21.03	20.95	21.10		
5	64QAM	1	12	21.00	20.95	21.07	22	2
5	64QAM	1	24	20.92	21.05	21.05		
5	64QAM	12	0	19.79	19.75	19.91		
5	64QAM	12	7	19.82	19.84	19.87	21	3
5	64QAM	12	13	19.80	19.84	19.94		
5	64QAM	25	0	19.77	19.79	19.88		

Channel				20415	20525	20635	Tune-up limit (dBm)	MPR (dB)
Frequency (MHz)				825.5	836.5	847.5		
3	QPSK	1	0	22.74	22.78	22.72	24	0
3	QPSK	1	8	22.73	22.73	22.68		
3	QPSK	1	14	22.69	22.72	22.77		
3	QPSK	8	0	21.74	21.72	21.84	23	1
3	QPSK	8	4	21.82	21.83	21.92		
3	QPSK	8	7	21.74	21.76	21.88		
3	QPSK	15	0	21.76	21.77	21.81	23	1
3	16QAM	1	0	22.11	21.99	22.17		
3	16QAM	1	8	22.08	22.09	22.33		
3	16QAM	1	14	22.01	22.03	22.18	22	2
3	16QAM	8	0	20.81	20.74	20.90		
3	16QAM	8	4	20.85	20.86	20.98		
3	16QAM	8	7	20.83	20.79	20.95	22	2
3	16QAM	15	0	20.81	20.81	20.88		
3	64QAM	1	0	20.98	20.94	21.06	22	2
3	64QAM	1	8	20.97	21.03	21.17		
3	64QAM	1	14	20.94	20.98	21.16		
3	64QAM	8	0	19.82	19.79	19.90	21	3
3	64QAM	8	4	19.78	19.77	19.98		
3	64QAM	8	7	19.83	19.81	19.96		
3	64QAM	15	0	19.79	19.77	19.85	21	3
Channel				20407	20525	20643		
Frequency (MHz)				824.7	836.5	848.3	Tune-up limit (dBm)	MPR (dB)
1.4	QPSK	1	0	22.58	22.76	22.55		
1.4	QPSK	1	3	22.45	22.47	22.69	24	0
1.4	QPSK	1	5	22.51	22.71	22.58		
1.4	QPSK	3	0	22.54	22.77	22.50		
1.4	QPSK	3	1	22.63	22.51	22.65	23	1
1.4	QPSK	3	3	22.48	22.73	22.61		
1.4	QPSK	6	0	21.66	21.81	21.80		
1.4	16QAM	1	0	21.58	21.65	21.74	23	1
1.4	16QAM	1	3	21.71	21.80	21.80		
1.4	16QAM	1	5	21.67	21.72	21.68		
1.4	16QAM	3	0	21.68	21.71	21.84	23	1
1.4	16QAM	3	1	21.58	21.73	21.79		
1.4	16QAM	3	3	21.56	21.62	21.71		
1.4	16QAM	6	0	20.89	20.99	20.83	22	2
1.4	64QAM	1	0	20.68	20.77	20.83	22	2
1.4	64QAM	1	3	20.78	20.86	20.92		
1.4	64QAM	1	5	20.76	20.91	20.80		
1.4	64QAM	3	0	20.77	20.94	20.80	22	2
1.4	64QAM	3	1	20.82	20.77	20.86		
1.4	64QAM	3	3	20.81	20.91	20.89		
1.4	64QAM	6	0	19.63	19.62	19.68	21	3

<LTE Band 12>

BW [MHz]	Modulation	RB Size	RB Offset	Power Low Ch. / Freq.	Power Middle Ch. / Freq.	Power High Ch. / Freq.	Tune-up limit (dBm)	MPR (dB)
Channel				23060	23095	23130		
Frequency (MHz)				704	707.5	711		
10	QPSK	1	0	23.00	23.06	22.96	24	0
10	QPSK	1	25	22.99	23.03	22.99		
10	QPSK	1	49	23.01	22.99	22.94		
10	QPSK	25	0	22.06	22.20	22.06	23	1
10	QPSK	25	12	22.19	22.13	22.06		
10	QPSK	25	25	22.10	22.15	22.16		
10	QPSK	50	0	22.08	22.10	22.06	23	1
10	16QAM	1	0	22.42	22.35	22.39		
10	16QAM	1	25	22.37	22.39	22.35		
10	16QAM	1	49	22.43	22.44	22.30	22	2
10	16QAM	25	0	21.14	21.12	21.10		
10	16QAM	25	12	21.25	21.16	21.12		
10	16QAM	25	25	21.21	21.19	21.09	22	2
10	16QAM	50	0	21.16	21.12	21.13		
10	64QAM	1	0	21.29	21.27	21.24		
10	64QAM	1	25	21.19	21.19	21.16	22	2
10	64QAM	1	49	21.21	21.27	21.25		
10	64QAM	25	0	20.11	20.11	20.11		
10	64QAM	25	12	20.18	20.15	20.11	21	3
10	64QAM	25	25	20.16	20.15	20.14		
10	64QAM	50	0	20.20	20.12	20.06		
Channel				23035	23095	23155		
Frequency (MHz)				701.5	707.5	713.5		
5	QPSK	1	0	22.92	22.99	22.97	24	0
5	QPSK	1	12	23.03	22.98	23.05		
5	QPSK	1	24	23.03	23.04	22.97		
5	QPSK	12	0	22.09	22.10	22.05	23	1
5	QPSK	12	7	22.18	22.12	22.09		
5	QPSK	12	13	22.13	22.14	22.13		
5	QPSK	25	0	22.15	22.07	22.00	23	1
5	16QAM	1	0	22.37	22.36	22.37		
5	16QAM	1	12	22.42	22.39	22.37		
5	16QAM	1	24	22.36	22.35	22.35	22	2
5	16QAM	12	0	21.25	21.11	21.09		
5	16QAM	12	7	21.25	21.11	21.07		
5	16QAM	12	13	21.16	21.18	21.11	22	2
5	16QAM	25	0	21.20	21.10	21.03		
5	64QAM	1	0	21.28	21.28	21.29		
5	64QAM	1	12	21.17	21.29	21.23	22	2
5	64QAM	1	24	21.30	21.30	21.26		
5	64QAM	12	0	20.20	20.13	20.06		
5	64QAM	12	7	20.19	20.11	20.11	21	3
5	64QAM	12	13	20.18	20.15	20.15		
5	64QAM	25	0	20.12	20.06	20.02		

Channel				23025	23095	23165	Tune-up limit (dBm)	MPR (dB)
Frequency (MHz)				700.5	707.5	714.5		
3	QPSK	1	0	23.04	23.02	22.99	24	0
3	QPSK	1	8	22.98	23.03	23.04		
3	QPSK	1	14	23.00	22.99	22.98		
3	QPSK	8	0	22.22	22.12	22.02	23	1
3	QPSK	8	4	22.25	22.12	22.09		
3	QPSK	8	7	22.13	22.10	22.08		
3	QPSK	15	0	22.17	22.09	22.04		
3	16QAM	1	0	22.39	22.33	22.36	23	1
3	16QAM	1	8	22.48	22.46	22.39		
3	16QAM	1	14	22.36	22.32	22.28		
3	16QAM	8	0	21.24	21.14	21.11	22	2
3	16QAM	8	4	21.21	21.15	21.17		
3	16QAM	8	7	21.11	21.17	21.14		
3	16QAM	15	0	21.21	21.09	21.05		
3	64QAM	1	0	21.30	21.28	21.27	22	2
3	64QAM	1	8	21.37	21.41	21.25		
3	64QAM	1	14	21.26	21.31	21.23		
3	64QAM	8	0	20.26	20.13	20.08	21	3
3	64QAM	8	4	20.18	20.09	20.13		
3	64QAM	8	7	20.20	20.18	20.09		
3	64QAM	15	0	20.15	20.08	20.09		
Channel				23017	23095	23173	Tune-up limit (dBm)	MPR (dB)
Frequency (MHz)				699.7	707.5	715.3		
1.4	QPSK	1	0	22.80	22.92	22.92	24	0
1.4	QPSK	1	3	22.84	23.03	22.85		
1.4	QPSK	1	5	23.00	22.95	22.82		
1.4	QPSK	3	0	22.97	22.88	22.88		
1.4	QPSK	3	1	22.89	22.92	22.99		
1.4	QPSK	3	3	22.88	22.82	22.87		
1.4	QPSK	6	0	21.91	21.97	21.96	23	1
1.4	16QAM	1	0	21.93	22.08	22.09	23	1
1.4	16QAM	1	3	21.95	22.06	21.93		
1.4	16QAM	1	5	21.97	22.03	22.04		
1.4	16QAM	3	0	22.03	22.11	21.88		
1.4	16QAM	3	1	22.00	22.00	21.98		
1.4	16QAM	3	3	22.04	22.03	21.91		
1.4	16QAM	6	0	21.04	21.07	20.97	22	2
1.4	64QAM	1	0	21.06	21.06	20.98	22	2
1.4	64QAM	1	3	21.04	20.93	20.96		
1.4	64QAM	1	5	20.93	21.07	20.97		
1.4	64QAM	3	0	20.95	21.09	20.88		
1.4	64QAM	3	1	20.96	21.08	21.08		
1.4	64QAM	3	3	20.96	20.92	20.86		
1.4	64QAM	6	0	20.05	20.19	20.14	21	3

12. WiFi/Bluetooth Output Power (Unit: dBm)

1. For 2.4 GHz 802.11b DSSS, either the initial test position procedure for multiple exposure test positions or the DSSS procedure for fixed exposure position is applied; these are mutually exclusive. For 2.4 GHz and 5 GHz OFDM configurations, the initial test configuration is applied to measure SAR using either the initial test position procedure for multiple exposure test position configurations or the initial test configuration procedures for fixed exposure test conditions. Based on the reported SAR of the measured configurations and maximum output power of the transmission mode configurations that are not included in the initial test configuration, the subsequent test configuration and initial test position procedures are applied to determine if SAR measurements are required for the remaining OFDM transmission configurations. In general, the number of test channels that require SAR measurement is minimized based on maximum output power measured for the test sample(s).
2. For OFDM transmission configurations in the 2.4 GHz and 5 GHz bands, When the same maximum power is specified for multiple transmission modes in a frequency band, the largest channel bandwidth, lowest order modulation, lowest data rate and lowest order 802.11a/g/n/ac mode is used for SAR measurement, on the highest measured output power channel for each frequency band.
3. DSSS and OFDM configurations are considered separately according to the required SAR procedures. SAR is measured in the initial test position using the 802.11 transmission mode configuration required by the DSSS procedure or initial test configuration and subsequent test configuration(s) according to the OFDM procedures. 18 The initial test position procedure is described in the following:
 - a. When the reported SAR of the initial test position is ≤ 0.4 W/kg, further SAR measurement is not required for the other test positions in that exposure configuration and 802.11 transmission mode combinations within the frequency band or aggregated band.
 - b. When the reported SAR of the test position is > 0.4 W/kg, SAR is repeated for the 802.11 transmission mode configuration tested in the initial test position to measure the subsequent next closet/smallest test separation distance and maximum coupling test position on the highest maximum output power channel, until the report SAR is ≤ 0.8 W/kg or all required test position are tested.
 - c. For all positions/configurations, when the reported SAR is > 0.8 W/kg, SAR is measured for these test positions/configurations on the subsequent next highest measured output power channel(s) until the reported SAR is ≤ 1.2 W/kg or all required channels are tested.

<WLAN>

2.4GHz WLAN				Ant 6		
2.4GHz WLAN	Mode	Channel	Frequency (MHz)	Average power (dBm)	Tune-Up Limit	Duty Cycle %
	802.11b 1Mbps	1	2412	13.64	15.00	100.00
		6	2437	13.89	15.00	
		11	2462	13.86	15.00	
	802.11g 6Mbps	1	2412	13.04	15.00	98.28
		6	2437	13.25	15.00	
		11	2462	13.21	15.00	
	802.11n-HT20 MCS0	1	2412	13.15	15.00	97.79
		6	2437	13.22	15.00	
		11	2462	13.16	15.00	

5.2GHz WLAN				Ant 6		
5.2GHz WLAN	Mode	Channel	Frequency (MHz)	Average power (dBm)	Tune-Up Limit	Duty Cycle %
	802.11a 6Mbps	36	5180	12.82	14.00	98.28
		40	5200	12.19	14.00	
		44	5220	12.33	14.00	
		48	5240	12.26	14.00	
	802.11n-HT20 MCS0	36	5180	12.70	14.00	98.15
		40	5200	12.21	14.00	
		44	5220	12.24	14.00	
		48	5240	12.28	14.00	
	802.11n-HT40 MCS0	38	5190	13.07	14.00	96.32
		46	5230	12.62	14.00	
	802.11ac-VHT20 MCS0	36	5180	12.63	14.00	98.23
		40	5200	12.21	14.00	
		44	5220	12.24	14.00	
		48	5240	12.30	14.00	
	802.11ac-VHT40 MCS0	38	5190	13.07	14.00	96.47
		46	5230	12.54	14.00	
	802.11ac-VHT80 MCS0	42	5210	12.09	14.00	93.02

5.3GHz WLAN				Ant 6		
	Mode	Channel	Frequency (MHz)	Average power (dBm)	Tune-Up Limit	Duty Cycle %
5.3GHz WLAN	802.11a 6Mbps	52	5260	12.34	14.00	98.28
		56	5280	12.48	14.00	
		60	5300	12.54	14.00	
		64	5320	12.36	14.00	
	802.11n-HT20 MCS0	52	5260	12.35	14.00	98.15
		56	5280	12.38	14.00	
		60	5300	12.30	14.00	
		64	5320	12.19	14.00	
	802.11n-HT40 MCS0	54	5270	12.55	14.00	96.32
		62	5310	12.64	14.00	
	802.11ac-VHT20 MCS0	52	5260	12.28	14.00	98.23
		56	5280	12.32	14.00	
		60	5300	12.31	14.00	
		64	5320	12.20	14.00	
	802.11ac-VHT40 MCS0	54	5270	12.41	14.00	96.47
		62	5310	12.10	14.00	
	802.11ac-VHT80 MCS0	58	5290	12.04	14.00	93.02

5.5GHz WLAN				Ant 6		
5.5GHz WLAN	Mode	Channel	Frequency (MHz)	Average power (dBm)	Tune-Up Limit	Duty Cycle %
	802.11a 6Mbps	100	5500	12.48	14.00	98.28
		116	5580	12.66	14.00	
		124	5620	12.77	14.00	
		132	5660	12.56	14.00	
		140	5700	12.79	14.00	
		144	5720	12.91	14.00	
	802.11n-HT20 MCS0	100	5500	12.26	14.00	98.15
		116	5580	12.54	14.00	
		124	5620	12.62	14.00	
		132	5660	12.89	14.00	
		140	5700	12.79	14.00	
		144	5720	12.66	14.00	
	802.11n-HT40 MCS0	102	5510	12.41	14.00	96.32
		110	5550	12.88	14.00	
		126	5630	13.01	14.00	
		134	5670	13.18	14.00	
		142	5710	13.06	14.00	
	802.11ac-VHT20 MCS0	100	5500	12.17	14.00	98.23
		116	5580	12.77	14.00	
		124	5620	12.73	14.00	
		132	5660	12.80	14.00	
		140	5700	12.76	14.00	
		144	5720	12.71	14.00	
	802.11ac-VHT40 MCS0	102	5510	12.74	14.00	96.47
		110	5550	12.44	14.00	
		126	5630	12.87	14.00	
		134	5670	12.97	14.00	
		142	5710	13.01	14.00	
	802.11ac-VHT80 MCS0	106	5530	12.22	14.00	93.02
		122	5610	12.39	14.00	
		138	5690	12.44	14.00	

5.8GHz WLAN				Ant 6		
5.8GHz WLAN	Mode	Channel	Frequency (MHz)	Average power (dBm)	Tune-Up Limit	Duty Cycle %
	802.11a 6Mbps	149	5745	12.36	14.00	98.28
		157	5785	12.56	14.00	
		165	5825	12.89	14.00	
	802.11n-HT20 MCS0	149	5745	12.33	14.00	98.15
		157	5785	12.74	14.00	
		165	5825	12.82	14.00	
	802.11n-HT40 MCS0	151	5755	12.56	14.00	96.32
		159	5795	12.84	14.00	
	802.11ac-VHT20 MCS0	149	5745	12.44	14.00	98.23
		157	5785	12.52	14.00	
		165	5825	12.78	14.00	
	802.11ac-VHT40 MCS0	151	5755	12.50	14.00	96.47
		159	5795	12.64	14.00	
	802.11ac-VHT80 MCS0	155	5775	12.06	14.00	93.02

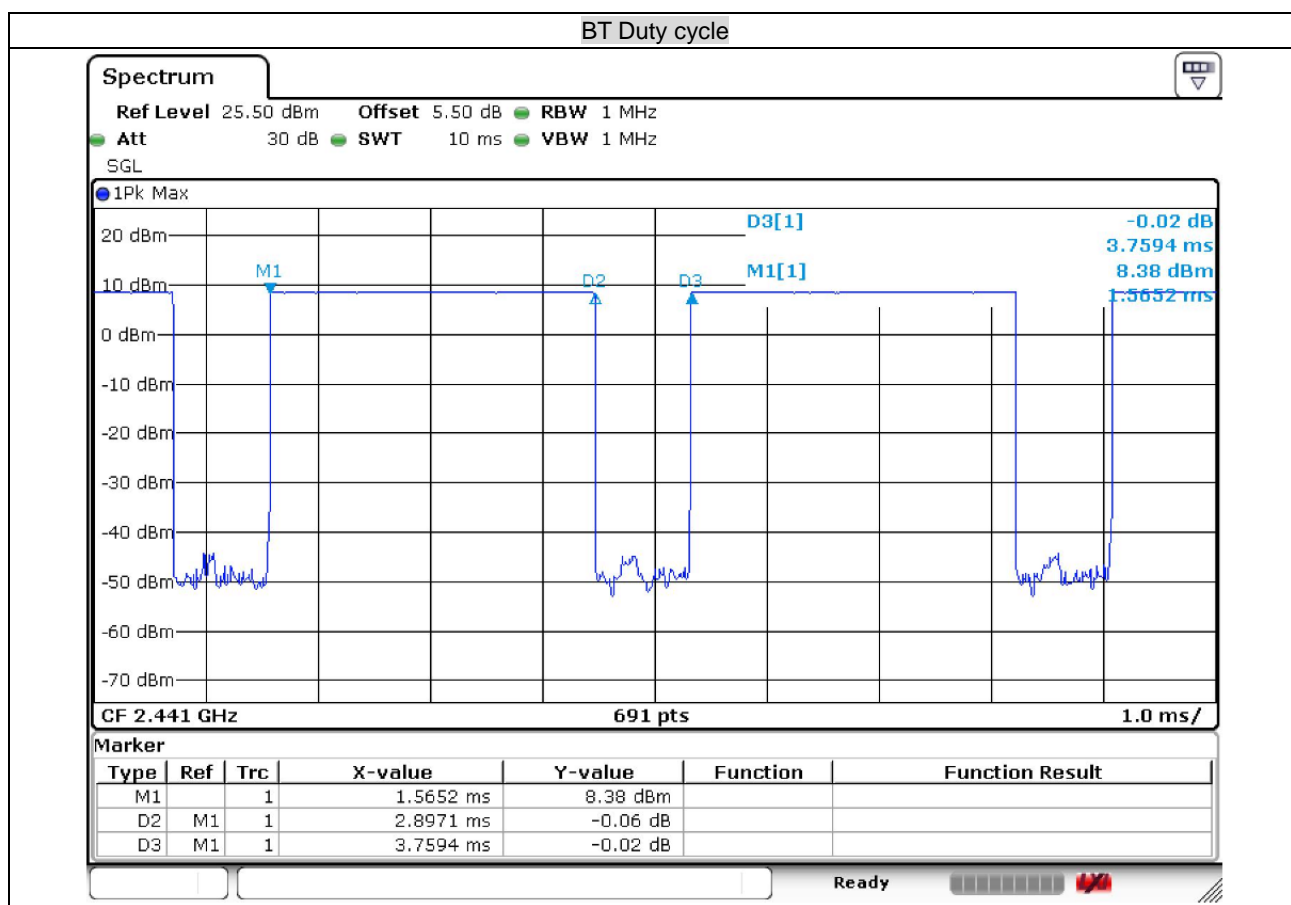
<2.4GHz Bluetooth>

Mode	Channel	Frequency (MHz)	Average power (dBm)		
			1Mbps	2Mbps	3Mbps
BR / EDR	CH 00	2402	8.76	6.06	6.03
	CH 39	2441	8.75	5.97	5.92
	CH 78	2480	8.82	6.21	6.32
Tune-up Limit			10.50	7.80	7.80

Mode	Channel	Frequency (MHz)	Average power (dBm)	
			1Mbps	2Mbps
LE	CH 00	2402	8.59	8.41
	CH 19	2440	8.61	8.72
	CH 39	2480	8.41	8.56
Tune-up Limit			10.00	10.00

General Note:

- For 2.4GHz Bluetooth SAR testing was selected 1Mbps due to its highest average power.



13. RF Exposure Conditions

Distance of the Antenna to the EUT surface/edge						
Antennas	Back	Front	Top Side	Bottom Side	Right Side	Left Side
WWAN Ant 0	≤ 25mm	≤ 25mm	>25mm	≤ 25mm	≤ 25mm	≤ 25mm
WWAN Ant 1	≤ 25mm	≤ 25mm	>25mm	≤ 25mm	>25mm	≤ 25mm
BT & 2.4GHz WLAN Ant 6	≤ 25mm	≤ 25mm	≤ 25mm	>25mm	>25mm	≤ 25mm

Positions for SAR tests; Hotspot mode						
Antennas	Back	Front	Top Side	Bottom Side	Right Side	Left Side
WWAN Ant 0	Yes	Yes	No	Yes	Yes	Yes
WWAN Ant 1	Yes	Yes	No	Yes	No	Yes
BT & 2.4GHz WLAN Ant 6	Yes	Yes	Yes	No	No	Yes

General Note:

Referring to KDB 941225 D06 v02r01, when the overall device length and width are ≥ 9cm*5cm, the test distance is 10 mm. SAR must be measured for all sides and surfaces with a transmitting antenna located within 25mm from that surface or edge, The detail antenna location please refers to Appendix D.

14. SAR Test Results

General Note:

1. Per KDB 447498 D01v06, the reported SAR is the measured SAR value adjusted for maximum tune-up tolerance.
 - a. Tune-up scaling Factor = tune-up limit power (mW) / EUT RF power (mW), where tune-up limit is the maximum rated power among all production units.
 - b. For SAR testing of WLAN signal with non-100% duty cycle, the measured SAR is scaled-up by the duty cycle scaling factor which is equal to "1/(duty cycle)"
 - c. For WWAN: Reported SAR(W/kg)= Measured SAR(W/kg)*Tune-up Scaling Factor
 - d. For WLAN/Bluetooth: Reported SAR(W/kg)= Measured SAR(W/kg)* Duty Cycle scaling factor * Tune-up scaling factor
2. Per KDB 447498 D01v06, for each exposure position, testing of other required channels within the operating mode of a frequency band is not required when the *reported* 1-g or 10-g SAR for the mid-band or highest output power channel is:
 - ≤ 0.8 W/kg or 2.0 W/kg, for 1-g or 10-g respectively, when the transmission band is ≤ 100 MHz
 - ≤ 0.6 W/kg or 1.5 W/kg, for 1-g or 10-g respectively, when the transmission band is between 100 MHz and 200 MHz
 - ≤ 0.4 W/kg or 1.0 W/kg, for 1-g or 10-g respectively, when the transmission band is ≥ 200 MHz
3. Per KDB 865664 D01v01r04, for each frequency band, repeated SAR measurement is required only when the measured SAR is ≥0.8W/kg.
4. Per KDB 648474 D04v01r03, when the reported SAR for a body-worn accessory measured without a headset connected to the handset is ≤ 1.2 W/kg, SAR testing with a headset connected to the handset is not required.

GSM Note:

1. Per KDB 941225 D01v03r01, for SAR test reduction for GSM / GPRS / EDGE modes is determined by the source-based time-averaged output power including tune-up tolerance. The mode with highest specified time-averaged output power should be tested for SAR compliance in the applicable exposure conditions. For modes with the same specified maximum output power and tolerance, the higher number time-slot configuration should be tested. Therefore, the GPRS (4Tx slots) for GSM850 and GPRS (3Tx slots) for GSM1900 is considered as the primary mode respectively.
2. Other configurations of GSM / GPRS / EDGE are considered as secondary modes. The 3G SAR test reduction procedure is applied, when the maximum output power and tune-up tolerance specified for production units in a secondary mode is $\leq \frac{1}{4}$ dB higher than the primary mode, SAR measurement is not required for the secondary mode.

UMTS Note:

1. Per KDB 941225 D01v03r01, for SAR testing is measured using a 12.2 kbps RMC with TPC bits configured to all "1's".
2. Per KDB 941225 D01v03r01, RMC 12.2kbps setting is used to evaluate SAR. The maximum output power and tune-up tolerance specified for production units in HSDPA / HSUPA / DC-HSDPA is $\leq \frac{1}{4}$ dB higher than RMC 12.2Kbps or when the highest reported SAR of the RMC12.2Kbps is scaled by the ratio of specified maximum output power and tune-up tolerance of HSDPA / HSUPA / DC-HSDPA to RMC12.2Kbps and the adjusted SAR is ≤ 1.2 W/kg, SAR measurement is not required for HSDPA / HSUPA / DC-HSDPA, and according to the following RF output power, the output power results of the secondary modes (HSUPA, HSDPA, DC-HSDPA) are less than $\frac{1}{4}$ dB higher than the primary modes; therefore, SAR measurement is not required for HSDPA / HSUPA / DC-HSDPA.

LTE Note:

1. Per KDB 941225 D05v02r05, start with the largest channel bandwidth and measure SAR for QPSK with 1 RB allocation, using the RB offset and required test channel combination with the highest maximum output power for RB offsets at the upper edge, middle and lower edge of each required test channel.
2. Per KDB 941225 D05v02r05, 50% RB allocation for QPSK SAR testing follows 1RB QPSK allocation procedure.
3. Per KDB 941225 D05v02r05, For QPSK with 100% RB allocation, SAR is not required when the highest maximum output power for 100 % RB allocation is less than the highest maximum output power in 50% and 1 RB allocations and the highest reported SAR for 1 RB and 50% RB allocation are ≤ 0.8 W/kg. Otherwise, SAR is measured for the highest output power channel; and if the reported SAR is > 1.45 W/kg, the remaining required test channels must also be tested.
4. Per KDB 941225 D05v02r05, 16QAM output power for each RB allocation configuration is $>$ not $\frac{1}{2}$ dB higher than the same configuration in QPSK and the reported SAR for the QPSK configuration is ≤ 1.45 W/kg; Per KDB 941225 D05v02r05, 16QAM SAR testing is not required.
5. Per KDB 941225 D05v02r05, Smaller bandwidth output power for each RB allocation configuration is $>$ not $\frac{1}{2}$ dB higher than the same configuration in the largest supported bandwidth, and the reported SAR for the largest supported bandwidth is ≤ 1.45 W/kg; Per KDB 941225 D05v02r05, smaller bandwidth SAR testing is not required.
6. For LTE B5/B12 the maximum bandwidth does not support three non-overlapping channels, per KDB 941225 D05v02r05, when a device supports overlapping channel assignment in a channel bandwidth configuration, the middle channel of the group of overlapping channels should be selected for testing.

WLAN Note:

1. Per KDB 248227 D01v02r02, for 2.4GHz 802.11g/n SAR testing is not required when the highest reported SAR for DSSS is adjusted by the ratio of OFDM to DSSS specified maximum output power and the adjusted SAR is ≤ 1.2 W/kg.
2. Per KDB 248227 D01v02r02, U-NII-1 SAR testing is not required when the U-NII-2A band highest reported SAR for a test configuration is ≤ 1.2 W/kg, SAR is not required for U-NII-1 band. But we still perform additional testing for U-NII-1 at body-worn exposure condition which keeps for more conservatively for simultaneous transmission analysis.
3. When the reported SAR of the test position is > 0.4 W/kg, SAR is repeated for the 802.11 transmission mode configuration tested in the initial test position to measure the subsequent next closet/smallest test separation distance and maximum coupling test position on the highest maximum output power channel, until the report SAR is ≤ 0.8 W/kg or all required test position are tested.
4. For all positions / configurations, when the reported SAR is > 0.8 W/kg, SAR is measured for these test positions / configurations on the subsequent next highest measured output power channel(s) until the reported SAR is ≤ 1.2 W/kg or all required channels are tested.
5. During SAR testing the WLAN transmission was verified using a spectrum analyzer.

14.1 Head SAR

<GSM SAR>

Plot No.	Band	Mode	Test Position	Gap (mm)	Antenna	Ch.	Freq. (MHz)	Average Power (dBm)	Tune-Up Limit (dBm)	Tune-up Scaling Factor	Power Drift (dB)	Measured 1g SAR (W/kg)	Reported 1g SAR (W/kg)
01	GSM850	GPRS (4 Tx slots)	Right Cheek	0mm	Ant 0	189	836.4	24.89	26.00	1.291	0.02	0.195	0.252
	GSM850	GPRS (4 Tx slots)	Right Tilted	0mm	Ant 0	189	836.4	24.89	26.00	1.291	0.03	0.138	0.178
	GSM850	GPRS (4 Tx slots)	Left Cheek	0mm	Ant 0	189	836.4	24.89	26.00	1.291	-0.01	0.171	0.221
	GSM850	GPRS (4 Tx slots)	Left Tilted	0mm	Ant 0	189	836.4	24.89	26.00	1.291	0.05	0.107	0.138
	GSM1900	GPRS (3 Tx slots)	Right Cheek	0mm	Ant 1	661	1880	22.57	23.50	1.239	0.06	0.052	0.064
	GSM1900	GPRS (3 Tx slots)	Right Tilted	0mm	Ant 1	661	1880	22.57	23.50	1.239	0.01	0.041	0.051
02	GSM1900	GPRS (3 Tx slots)	Left Cheek	0mm	Ant 1	661	1880	22.57	23.50	1.239	0.03	0.077	0.095
	GSM1900	GPRS (3 Tx slots)	Left Tilted	0mm	Ant 1	661	1880	22.57	23.50	1.239	-0.02	0.062	0.077

<WCDMA SAR>

Plot No.	Band	Mode	Test Position	Gap (mm)	Antenna	Ch.	Freq. (MHz)	Average Power (dBm)	Tune-Up Limit (dBm)	Tune-up Scaling Factor	Power Drift (dB)	Measured 1g SAR (W/kg)	Reported 1g SAR (W/kg)
03	WCDMA V	RMC 12.2Kbps	Right Cheek	0mm	Ant 0	4182	836.4	23.32	24.00	1.169	0.09	0.265	0.310
	WCDMA V	RMC 12.2Kbps	Right Tilted	0mm	Ant 0	4182	836.4	23.32	24.00	1.169	0.03	0.185	0.216
	WCDMA V	RMC 12.2Kbps	Left Cheek	0mm	Ant 0	4182	836.4	23.32	24.00	1.169	0.04	0.221	0.258
	WCDMA V	RMC 12.2Kbps	Left Tilted	0mm	Ant 0	4182	836.4	23.32	24.00	1.169	0.08	0.133	0.156

<FDD LTE SAR>

Plot No.	Band	BW (MHz)	Modulation	RB Size	RB offset	Test Position	Gap (mm)	Antenna	Ch.	Freq. (MHz)	Average Power (dBm)	Tune-Up Limit (dBm)	Tune-up Scaling Factor	Power Drift (dB)	Measured 1g SAR (W/kg)	Reported 1g SAR (W/kg)
04	LTE Band 12	10M	QPSK	1	0	Right Cheek	0mm	Ant 0	23095	707.5	23.06	24.00	1.242	0.05	0.210	0.261
	LTE Band 12	10M	QPSK	25	0	Right Cheek	0mm	Ant 0	23095	707.5	22.20	23.00	1.202	0.03	0.188	0.226
	LTE Band 12	10M	QPSK	1	0	Right Tilted	0mm	Ant 0	23095	707.5	23.06	24.00	1.242	0.01	0.133	0.165
	LTE Band 12	10M	QPSK	25	0	Right Tilted	0mm	Ant 0	23095	707.5	22.20	23.00	1.202	0.02	0.131	0.157
	LTE Band 12	10M	QPSK	1	0	Left Cheek	0mm	Ant 0	23095	707.5	23.06	24.00	1.242	0.06	0.175	0.217
	LTE Band 12	10M	QPSK	25	0	Left Cheek	0mm	Ant 0	23095	707.5	22.20	23.00	1.202	0.03	0.150	0.180
	LTE Band 12	10M	QPSK	1	0	Left Tilted	0mm	Ant 0	23095	707.5	23.06	24.00	1.242	-0.02	0.114	0.142
	LTE Band 12	10M	QPSK	25	0	Left Tilted	0mm	Ant 0	23095	707.5	22.20	23.00	1.202	-0.04	0.101	0.121
05	LTE Band 5	10M	QPSK	1	0	Right Cheek	0mm	Ant 0	20525	836.5	22.80	24.00	1.318	0.04	0.223	0.294
	LTE Band 5	10M	QPSK	25	0	Right Cheek	0mm	Ant 0	20525	836.5	21.87	23.00	1.297	0.03	0.176	0.228
	LTE Band 5	10M	QPSK	1	0	Right Tilted	0mm	Ant 0	20525	836.5	22.80	24.00	1.318	0.09	0.148	0.195
	LTE Band 5	10M	QPSK	25	0	Right Tilted	0mm	Ant 0	20525	836.5	21.87	23.00	1.297	0.02	0.124	0.161
	LTE Band 5	10M	QPSK	1	0	Left Cheek	0mm	Ant 0	20525	836.5	22.80	24.00	1.318	0.01	0.198	0.261
	LTE Band 5	10M	QPSK	25	0	Left Cheek	0mm	Ant 0	20525	836.5	21.87	23.00	1.297	-0.03	0.159	0.206
	LTE Band 5	10M	QPSK	1	0	Left Tilted	0mm	Ant 0	20525	836.5	22.80	24.00	1.318	0.05	0.127	0.167
	LTE Band 5	10M	QPSK	25	0	Left Tilted	0mm	Ant 0	20525	836.5	21.87	23.00	1.297	0.04	0.106	0.138

<WLAN SAR>

Plot No.	Band	Mode	Test Position	Gap (mm)	Antenna	Ch.	Freq. (MHz)	Average Power (dBm)	Tune-Up Limit (dBm)	Tune-up Scaling Factor	Duty Cycle %	Duty Cycle Scaling Factor	Power Drift (dB)	Measured 1g SAR (W/kg)	Reported 1g SAR (W/kg)
	WLAN2.4GHz	802.11b 1Mbps	Right Cheek	0mm	Ant 6	6	2437	13.89	15.00	1.291	100	1.000	-0.02	0.165	0.213
06	WLAN2.4GHz	802.11b 1Mbps	Right Tilted	0mm	Ant 6	6	2437	13.89	15.00	1.291	100	1.000	0.01	0.204	0.263
	WLAN2.4GHz	802.11b 1Mbps	Left Cheek	0mm	Ant 6	6	2437	13.89	15.00	1.291	100	1.000	0.06	0.132	0.170
	WLAN2.4GHz	802.11b 1Mbps	Left Tilted	0mm	Ant 6	6	2437	13.89	15.00	1.291	100	1.000	0.03	0.164	0.212
	WLAN5.3GHz	802.11ac-VHT80 MCS0	Right Cheek	0mm	Ant 6	58	5290	12.04	14.00	1.570	93.02	1.075	0.01	0.037	0.062
	WLAN5.3GHz	802.11ac-VHT80 MCS0	Right Tilted	0mm	Ant 6	58	5290	12.04	14.00	1.570	93.02	1.075	0.05	0.033	0.056
07	WLAN5.3GHz	802.11ac-VHT80 MCS0	Left Cheek	0mm	Ant 6	58	5290	12.04	14.00	1.570	93.02	1.075	-0.1	0.045	0.075
	WLAN5.3GHz	802.11ac-VHT80 MCS0	Left Tilted	0mm	Ant 6	58	5290	12.04	14.00	1.570	93.02	1.075	0.02	0.034	0.057
	WLAN5.5GHz	802.11ac-VHT80 MCS0	Right Cheek	0mm	Ant 6	138	5690	12.44	14.00	1.431	93.02	1.075	0.03	0.029	0.045
	WLAN5.5GHz	802.11ac-VHT80 MCS0	Right Tilted	0mm	Ant 6	138	5690	12.44	14.00	1.431	93.02	1.075	0.01	0.030	0.046
08	WLAN5.5GHz	802.11ac-VHT80 MCS0	Left Cheek	0mm	Ant 6	138	5690	12.44	14.00	1.431	93.02	1.075	-0.13	0.098	0.150
	WLAN5.5GHz	802.11ac-VHT80 MCS0	Left Tilted	0mm	Ant 6	138	5690	12.44	14.00	1.431	93.02	1.075	-0.02	0.058	0.089
	WLAN5.8GHz	802.11ac-VHT80 MCS0	Right Cheek	0mm	Ant 6	155	5775	12.06	14.00	1.562	93.02	1.075	0.06	0.044	0.074
	WLAN5.8GHz	802.11ac-VHT80 MCS0	Right Tilted	0mm	Ant 6	155	5775	12.06	14.00	1.562	93.02	1.075	-0.01	0.083	0.139
09	WLAN5.8GHz	802.11ac-VHT80 MCS0	Left Cheek	0mm	Ant 6	155	5775	12.06	14.00	1.562	93.02	1.075	-0.08	0.141	0.237
	WLAN5.8GHz	802.11ac-VHT80 MCS0	Left Tilted	0mm	Ant 6	155	5775	12.06	14.00	1.562	93.02	1.075	0.03	0.040	0.067

<Bluetooth SAR>

Plot No.	Band	Mode	Test Position	Gap (mm)	Antenna	Ch.	Freq. (MHz)	Average Power (dBm)	Tune-Up Limit (dBm)	Tune-up Scaling Factor	Duty Cycle %	Duty Cycle Scaling Factor	Power Drift (dB)	Measured 1g SAR (W/kg)	Reported 1g SAR (W/kg)
	Bluetooth	1Mbps	Right Cheek	0mm	Ant 6	78	2480	8.82	10.50	1.472	77.06	1.298	0.05	0.034	0.065
10	Bluetooth	1Mbps	Right Tilted	0mm	Ant 6	78	2480	8.82	10.50	1.472	77.06	1.298	0.02	0.062	0.118
	Bluetooth	1Mbps	Left Cheek	0mm	Ant 6	78	2480	8.82	10.50	1.472	77.06	1.298	0.01	0.032	0.062
	Bluetooth	1Mbps	Left Tilted	0mm	Ant 6	78	2480	8.82	10.50	1.472	77.06	1.298	0.06	0.043	0.082

14.2 Hotspot SAR

<GSM SAR>

Plot No.	Band	Mode	Test Position	Gap (mm)	Antenna	Ch.	Freq. (MHz)	Average Power (dBm)	Tune-Up Limit (dBm)	Tune-up Scaling Factor	Power Drift (dB)	Measured 1g SAR (W/kg)	Reported 1g SAR (W/kg)
	GSM850	GPRS (4 Tx slots)	Front	10mm	Ant 0	189	836.4	24.89	26.00	1.291	0.03	0.186	0.240
	GSM850	GPRS (4 Tx slots)	Back	10mm	Ant 0	189	836.4	24.89	26.00	1.291	0.01	0.171	0.221
	GSM850	GPRS (4 Tx slots)	Left Side	10mm	Ant 0	189	836.4	24.89	26.00	1.291	0.05	0.131	0.169
11	GSM850	GPRS (4 Tx slots)	Right Side	10mm	Ant 0	189	836.4	24.89	26.00	1.291	0.17	0.187	0.241
	GSM850	GPRS (4 Tx slots)	Bottom Side	10mm	Ant 0	189	836.4	24.89	26.00	1.291	0.09	0.134	0.173
	GSM1900	GPRS (3 Tx slots)	Front	10mm	Ant 1	661	1880	22.57	23.50	1.239	0.03	0.101	0.125
12	GSM1900	GPRS (3 Tx slots)	Back	10mm	Ant 1	661	1880	22.57	23.50	1.239	0.04	0.181	0.224
	GSM1900	GPRS (3 Tx slots)	Left Side	10mm	Ant 1	661	1880	22.57	23.50	1.239	0.02	0.095	0.118
	GSM1900	GPRS (3 Tx slots)	Right Side	10mm	Ant 1	661	1880	22.57	23.50	1.239	-0.01	0.074	0.092
	GSM1900	GPRS (3 Tx slots)	Bottom Side	10mm	Ant 1	661	1880	22.57	23.50	1.239	0.05	0.021	0.026

<WCDMA SAR>

Plot No.	Band	Mode	Test Position	Gap (mm)	Antenna	Ch.	Freq. (MHz)	Average Power (dBm)	Tune-Up Limit (dBm)	Tune-up Scaling Factor	Power Drift (dB)	Measured 1g SAR (W/kg)	Reported 1g SAR (W/kg)
	WCDMA V	RMC 12.2Kbps	Front	10mm	Ant 0	4182	836.4	23.32	24.00	1.169	0.01	0.278	0.325
	WCDMA V	RMC 12.2Kbps	Back	10mm	Ant 0	4182	836.4	23.32	24.00	1.169	0.05	0.273	0.319
	WCDMA V	RMC 12.2Kbps	Left Side	10mm	Ant 0	4182	836.4	23.32	24.00	1.169	-0.03	0.205	0.240
13	WCDMA V	RMC 12.2Kbps	Right Side	10mm	Ant 0	4182	836.4	23.32	24.00	1.169	-0.01	0.292	0.341
	WCDMA V	RMC 12.2Kbps	Bottom Side	10mm	Ant 0	4182	836.4	23.32	24.00	1.169	0.04	0.234	0.274

<FDD LTE SAR>

Plot No.	Band	BW (MHz)	Modulation	RB Size	RB offset	Test Position	Gap (mm)	Antenna	Ch.	Freq. (MHz)	Average Power (dBm)	Tune-Up Limit (dBm)	Tune-up Scaling Factor	Power Drift (dB)	Measured 1g SAR (W/kg)	Reported 1g SAR (W/kg)
	LTE Band 12	10M	QPSK	1	0	Front	10mm	Ant 0	23095	707.5	23.06	24.00	1.242	0.03	0.212	0.263
	LTE Band 12	10M	QPSK	25	0	Front	10mm	Ant 0	23095	707.5	22.20	23.00	1.202	-0.01	0.172	0.207
	LTE Band 12	10M	QPSK	1	0	Back	10mm	Ant 0	23095	707.5	23.06	24.00	1.242	0.05	0.217	0.269
	LTE Band 12	10M	QPSK	25	0	Back	10mm	Ant 0	23095	707.5	22.20	23.00	1.202	0.06	0.180	0.216
	LTE Band 12	10M	QPSK	1	0	Left Side	10mm	Ant 0	23095	707.5	23.06	24.00	1.242	0.07	0.149	0.185
	LTE Band 12	10M	QPSK	25	0	Left Side	10mm	Ant 0	23095	707.5	22.20	23.00	1.202	0.03	0.124	0.149
14	LTE Band 12	10M	QPSK	1	0	Right Side	10mm	Ant 0	23095	707.5	23.06	24.00	1.242	0.01	0.218	0.271
	LTE Band 12	10M	QPSK	25	0	Right Side	10mm	Ant 0	23095	707.5	22.20	23.00	1.202	-0.02	0.183	0.220
	LTE Band 12	10M	QPSK	1	0	Bottom Side	10mm	Ant 0	23095	707.5	23.06	24.00	1.242	0.02	0.107	0.133
	LTE Band 12	10M	QPSK	25	0	Bottom Side	10mm	Ant 0	23095	707.5	22.20	23.00	1.202	0.06	0.093	0.112
	LTE Band 5	10M	QPSK	1	0	Front	10mm	Ant 0	20525	836.5	22.80	24.00	1.318	0.03	0.273	0.360
	LTE Band 5	10M	QPSK	25	0	Front	10mm	Ant 0	20525	836.5	21.87	23.00	1.297	0.01	0.204	0.265
	LTE Band 5	10M	QPSK	1	0	Back	10mm	Ant 0	20525	836.5	22.80	24.00	1.318	0.05	0.265	0.349
	LTE Band 5	10M	QPSK	25	0	Back	10mm	Ant 0	20525	836.5	21.87	23.00	1.297	0.03	0.213	0.276
	LTE Band 5	10M	QPSK	1	0	Left Side	10mm	Ant 0	20525	836.5	22.80	24.00	1.318	0.02	0.208	0.274
	LTE Band 5	10M	QPSK	25	0	Left Side	10mm	Ant 0	20525	836.5	21.87	23.00	1.297	-0.06	0.156	0.202
15	LTE Band 5	10M	QPSK	1	0	Right Side	10mm	Ant 0	20525	836.5	22.80	24.00	1.318	-0.05	0.288	0.380
	LTE Band 5	10M	QPSK	25	0	Right Side	10mm	Ant 0	20525	836.5	21.87	23.00	1.297	0.01	0.214	0.278
	LTE Band 5	10M	QPSK	1	0	Bottom Side	10mm	Ant 0	20525	836.5	22.80	24.00	1.318	0.02	0.207	0.273
	LTE Band 5	10M	QPSK	25	0	Bottom Side	10mm	Ant 0	20525	836.5	21.87	23.00	1.297	0.04	0.156	0.202

<WLAN SAR>

Plot No.	Band	Mode	Test Position	Gap (mm)	Antenna	Ch.	Freq. (MHz)	Average Power (dBm)	Tune-Up Limit (dBm)	Tune-up Scaling Factor	Duty Cycle %	Duty Cycle Scaling Factor	Power Drift (dB)	Measured 1g SAR (W/kg)	Reported 1g SAR (W/kg)
	WLAN2.4GHz	802.11b 1Mbps	Front	10mm	Ant 6	6	2437	13.89	15.00	1.291	100	1.000	0.04	0.123	0.159
	WLAN2.4GHz	802.11b 1Mbps	Back	10mm	Ant 6	6	2437	13.89	15.00	1.291	100	1.000	-0.03	0.187	0.241
	WLAN2.4GHz	802.11b 1Mbps	Left Side	10mm	Ant 6	6	2437	13.89	15.00	1.291	100	1.000	0.01	0.065	0.084
	WLAN2.4GHz	802.11b 1Mbps	Right Side	10mm	Ant 6	6	2437	13.89	15.00	1.291	100	1.000	0.02	0.021	0.027
16	WLAN2.4GHz	802.11b 1Mbps	Top Side	10mm	Ant 6	6	2437	13.89	15.00	1.291	100	1.000	-0.08	0.213	0.275

<Bluetooth SAR>

Plot No.	Band	Mode	Test Position	Gap (mm)	Antenna	Ch.	Freq. (MHz)	Average Power (dBm)	Tune-Up Limit (dBm)	Tune-up Scaling Factor	Duty Cycle %	Duty Cycle Scaling Factor	Power Drift (dB)	Measured 1g SAR (W/kg)	Reported 1g SAR (W/kg)
	Bluetooth	1Mbps	Front	10mm	Ant 6	78	2480	8.82	10.50	1.472	77.06	1.298	-0.01	0.016	0.031
	Bluetooth	1Mbps	Back	10mm	Ant 6	78	2480	8.82	10.50	1.472	77.06	1.298	-0.08	0.021	0.039
	Bluetooth	1Mbps	Left Side	10mm	Ant 6	78	2480	8.82	10.50	1.472	77.06	1.298	0.05	0.006	0.012
17	Bluetooth	1Mbps	Right Side	10mm	Ant 6	78	2480	8.82	10.50	1.472	77.06	1.298	0.09	0.009	0.017
	Bluetooth	1Mbps	Top Side	10mm	Ant 6	78	2480	8.82	10.50	1.472	77.06	1.298	-0.09	0.026	0.050

14.3 Body Worn Accessory SAR

<GSM SAR>

Plot No.	Band	Mode	Test Position	Gap (mm)	Antenna	Ch.	Freq. (MHz)	Average Power (dBm)	Tune-Up Limit (dBm)	Tune-up Scaling Factor	Power Drift (dB)	Measured 1g SAR (W/kg)	Reported 1g SAR (W/kg)
18	GSM850	GPRS (4 Tx slots)	Front	15mm	Ant 0	189	836.4	24.89	26.00	1.291	-0.09	0.158	0.204
	GSM850	GPRS (4 Tx slots)	Back	15mm	Ant 0	189	836.4	24.89	26.00	1.291	0.04	0.151	0.195
	GSM1900	GPRS (3 Tx slots)	Front	15mm	Ant 1	661	1880	22.57	23.50	1.239	0.04	0.079	0.098
19	GSM1900	GPRS (3 Tx slots)	Back	15mm	Ant 1	661	1880	22.57	23.50	1.239	0.04	0.100	0.124

<WCDMA SAR>

Plot No.	Band	Mode	Test Position	Gap (mm)	Antenna	Ch.	Freq. (MHz)	Average Power (dBm)	Tune-Up Limit (dBm)	Tune-up Scaling Factor	Power Drift (dB)	Measured 1g SAR (W/kg)	Reported 1g SAR (W/kg)
20	WCDMA V	RMC 12.2Kbps	Front	15mm	Ant 0	4182	836.4	23.32	24.00	1.169	0.01	0.230	0.269
	WCDMA V	RMC 12.2Kbps	Back	15mm	Ant 0	4182	836.4	23.32	24.00	1.169	0.05	0.217	0.254

<TDD LTE SAR>

Plot No.	Band	BW (MHz)	Modulation	RB Size	RB offset	Test Position	Gap (mm)	Antenna	Ch.	Freq. (MHz)	Average Power (dBm)	Tune-Up Limit (dBm)	Tune-up Scaling Factor	Power Drift (dB)	Measured 1g SAR (W/kg)	Reported 1g SAR (W/kg)
	LTE Band 12	10M	QPSK	1	0	Front	15mm	Ant 0	23095	707.5	23.06	24.00	1.242	0.03	0.185	0.230
	LTE Band 12	10M	QPSK	25	0	Front	15mm	Ant 0	23095	707.5	22.20	23.00	1.202	0.05	0.160	0.192
21	LTE Band 12	10M	QPSK	1	0	Back	15mm	Ant 0	23095	707.5	23.06	24.00	1.242	0.01	0.194	0.241
	LTE Band 12	10M	QPSK	25	0	Back	15mm	Ant 0	23095	707.5	22.20	23.00	1.202	-0.03	0.159	0.191
22	LTE Band 5	10M	QPSK	1	0	Front	15mm	Ant 0	20525	836.5	22.80	24.00	1.318	0.01	0.222	0.293
	LTE Band 5	10M	QPSK	25	0	Front	15mm	Ant 0	20525	836.5	21.87	23.00	1.297	0.06	0.203	0.263
	LTE Band 5	10M	QPSK	1	0	Back	15mm	Ant 0	20525	836.5	22.80	24.00	1.318	-0.02	0.214	0.282
	LTE Band 5	10M	QPSK	25	0	Back	15mm	Ant 0	20525	836.5	21.87	23.00	1.297	0.03	0.194	0.252

<WLAN SAR>

Plot No.	Band	Mode	Test Position	Gap (mm)	Antenna	Ch.	Freq. (MHz)	Average Power (dBm)	Tune-Up Limit (dBm)	Tune-up Scaling Factor	Duty Cycle %	Duty Cycle Scaling Factor	Power Drift (dB)	Measured 1g SAR (W/kg)	Reported 1g SAR (W/kg)
	WLAN2.4GHz	802.11b 1Mbps	Front	15mm	Ant 6	6	2437	13.89	15.00	1.291	100	1.000	0.06	0.059	0.076
23	WLAN2.4GHz	802.11b 1Mbps	Back	15mm	Ant 6	6	2437	13.89	15.00	1.291	100	1.000	-0.01	0.101	0.130
	WLAN5.2GHz	802.11ac-VHT80 MCS0	Front	15mm	Ant 6	42	5210	12.09	14.00	1.552	93.02	1.075	0.03	0.016	0.027
24	WLAN5.2GHz	802.11ac-VHT80 MCS0	Back	15mm	Ant 6	42	5210	12.09	14.00	1.552	93.02	1.075	-0.01	0.031	0.052
	WLAN5.3GHz	802.11ac-VHT80 MCS0	Front	15mm	Ant 6	58	5290	12.04	14.00	1.570	93.02	1.075	-0.02	0.016	0.027
25	WLAN5.3GHz	802.11ac-VHT80 MCS0	Back	15mm	Ant 6	58	5290	12.04	14.00	1.570	93.02	1.075	-0.06	0.025	0.042
	WLAN5.5GHz	802.11ac-VHT80 MCS0	Front	15mm	Ant 6	138	5690	12.44	14.00	1.431	93.02	1.075	0.04	0.070	0.108
26	WLAN5.5GHz	802.11ac-VHT80 MCS0	Back	15mm	Ant 6	138	5690	12.44	14.00	1.431	93.02	1.075	0.17	0.090	0.138
	WLAN5.8GHz	802.11ac-VHT80 MCS0	Front	15mm	Ant 6	155	5775	12.06	14.00	1.562	93.02	1.075	0.01	0.079	0.133
27	WLAN5.8GHz	802.11ac-VHT80 MCS0	Back	15mm	Ant 6	155	5775	12.06	14.00	1.562	93.02	1.075	-0.08	0.157	0.264

<Bluetooth SAR>

Plot No.	Band	Mode	Test Position	Gap (mm)	Antenna	Ch.	Freq. (MHz)	Average Power (dBm)	Tune-Up Limit (dBm)	Tune-up Scaling Factor	Duty Cycle %	Duty Cycle Scaling Factor	Power Drift (dB)	Measured 1g SAR (W/kg)	Reported 1g SAR (W/kg)
28	Bluetooth	1Mbps	Front	15mm	Ant 6	78	2480	8.82	10.50	1.472	77.06	1.298	0.02	0.001	0.002
	Bluetooth	1Mbps	Back	15mm	Ant 6	78	2480	8.82	10.50	1.472	77.06	1.298	-0.05	0.003	0.006

15. Simultaneous Transmission Analysis

No.	Simultaneous Transmission Configurations	Portable Handset		
		Head	Body-worn	Hotspot
1.	WWAN + WLAN 2.4GHz	Yes	Yes	Yes
2.	WWAN + Bluetooth	Yes	Yes	Yes
3.	WWAN + WLAN 5GHz + Bluetooth	Yes	Yes	No

General Note:

- This device supports VoIP in GPRS, EGPRS, WCDMA and LTE (e.g. for 3rd-party VoIP), LTE supports VoLTE operation.
- EUT will choose each GSM, WCDMA and LTE according to the network signal condition; therefore, they will not operate simultaneously at any moment.
- This device 2.4GHz WLAN support hotspot operation and Bluetooth support tethering applications.
- This device 2.4GHz WLAN supports hotspot operation, and 5.2GHz / 5.3GHz / 5.5GHz / 5.8GHz WLAN does not support hotspot operation.
- WLAN 2.4GHz and Bluetooth share the same antenna so can't transmit simultaneously.
- According to the EUT characteristic, WLAN 5GHz and Bluetooth can transmit simultaneously.
- According to the EUT characteristic, WLAN 5GHz and WLAN 2.4GHz can't transmit simultaneously.
- Chose the worst zoom scan SAR of WLAN correspondingly for co-located with WWAN analysis.
- The reported SAR summation is calculated based on the same configuration and test position.
- Per KDB 447498 D01v06, simultaneous transmission SAR is compliant if,
 - 1g Scalar SAR summation < 1.6W/kg and.
 - $SPLSR = (SAR1 + SAR2)^{1.5} / (\min. \text{ separation distance, mm})$, and the peak separation distance is determined from the square root of $[(x1-x2)^2 + (y1-y2)^2 + (z1-z2)^2]$, where (x1, y1, z1) and (x2, y2, z2) are the coordinates of the extrapolated peak SAR locations in the zoom scan.
 - If $SPLSR \leq 0.04$ for 1g SAR, simultaneously transmission SAR measurement is not necessary.
 - Simultaneously transmission SAR measurement, and the reported multi-band 1g SAR < 1.6W/kg.

15.1 Head Exposure Conditions

WWAN Band		Exposure Position	1	2	3	4	1+2	1+3+4
			WWAN	2.4GHz WLAN Ant 6	5GHz WLAN Ant 6	Bluetooth Ant 6	Summed	Summed
			1g SAR (W/kg)	1g SAR (W/kg)	1g SAR (W/kg)	1g SAR (W/kg)	1g SAR (W/kg)	1g SAR (W/kg)
GSM	GSM850Ant 0	Right Cheek	0.252	0.213	0.074	0.065	0.465	0.391
		Right Tilted	0.178	0.263	0.139	0.118	0.441	0.435
		Left Cheek	0.221	0.170	0.237	0.062	0.391	0.520
		Left Tilted	0.138	0.212	0.089	0.082	0.350	0.309
	GSM1900Ant 1	Right Cheek	0.064	0.213	0.074	0.065	0.277	0.203
		Right Tilted	0.051	0.263	0.139	0.118	0.314	0.308
		Left Cheek	0.095	0.170	0.237	0.062	0.265	0.394
		Left Tilted	0.077	0.212	0.089	0.082	0.289	0.248
WCDMA	WCDMA V Ant 0	Right Cheek	0.310	0.213	0.074	0.065	0.523	0.449
		Right Tilted	0.216	0.263	0.139	0.118	0.479	0.473
		Left Cheek	0.258	0.170	0.237	0.062	0.428	0.557
		Left Tilted	0.156	0.212	0.089	0.082	0.368	0.327
LTE	LTE Band 5Ant 0	Right Cheek	0.294	0.213	0.074	0.065	0.507	0.433
		Right Tilted	0.195	0.263	0.139	0.118	0.458	0.452
		Left Cheek	0.261	0.170	0.237	0.062	0.431	0.560
		Left Tilted	0.167	0.212	0.089	0.082	0.379	0.338
	LTE Band 12Ant 0	Right Cheek	0.261	0.213	0.074	0.065	0.474	0.400
		Right Tilted	0.165	0.263	0.139	0.118	0.428	0.422
		Left Cheek	0.217	0.170	0.237	0.062	0.387	0.516
		Left Tilted	0.142	0.212	0.089	0.082	0.354	0.313

15.2 Hotspot Exposure Conditions

WWAN Band		Exposure Position	1	2	3	1+2	1+3
			WWAN	2.4GHz WLAN Ant 6	Bluetooth Ant 6	Summed	Summed
			1g SAR (W/kg)	1g SAR (W/kg)	1g SAR (W/kg)	1g SAR (W/kg)	1g SAR (W/kg)
GSM	GSM850Ant 0	Front	0.240	0.159	0.031	0.399	0.271
		Back	0.221	0.241	0.039	0.462	0.260
		Left side	0.169	0.084	0.012	0.253	0.181
		Right side	0.241	0.027	0.017	0.268	0.258
		Top side		0.275	0.050	0.275	0.050
		Bottom side	0.173			0.173	0.173
	GSM1900Ant 1	Front	0.125	0.159	0.031	0.284	0.156
		Back	0.224	0.241	0.039	0.465	0.263
		Left side	0.118	0.084	0.012	0.202	0.130
		Right side	0.092	0.027	0.017	0.119	0.109
		Top side		0.275	0.050	0.275	0.050
		Bottom side	0.026			0.026	0.026
WCDMA	WCDMA Vant 0	Front	0.325	0.159	0.031	0.484	0.356
		Back	0.319	0.241	0.039	0.560	0.358
		Left side	0.240	0.084	0.012	0.324	0.252
		Right side	0.341	0.027	0.017	0.368	0.358
		Top side		0.275	0.050	0.275	0.050
		Bottom side	0.274			0.274	0.274
LTE	LTE Band 5Ant 0	Front	0.360	0.159	0.031	0.519	0.391
		Back	0.349	0.241	0.039	0.590	0.388
		Left side	0.274	0.084	0.012	0.358	0.286
		Right side	0.380	0.027	0.017	0.407	0.397
		Top side		0.275	0.050	0.275	0.050
		Bottom side	0.273			0.273	0.273
	LTE Band 12Ant 0	Front	0.263	0.159	0.031	0.422	0.294
		Back	0.269	0.241	0.039	0.510	0.308
		Left side	0.185	0.084	0.012	0.269	0.197
		Right side	0.271	0.027	0.017	0.298	0.288
		Top side		0.275	0.050	0.275	0.050
		Bottom side	0.133			0.133	0.133

15.3 Body-Worn Accessory Exposure Conditions

WWAN Band		Exposure Position	1	2	3	4	1+2	1+3+4
			WWAN	2.4GHz WLAN Ant 6	5GHz WLAN Ant 6	Bluetooth Ant 6	Summed	Summed
			1g SAR (W/kg)	1g SAR (W/kg)	1g SAR (W/kg)	1g SAR (W/kg)	1g SAR (W/kg)	1g SAR (W/kg)
GSM	GSM850Ant 0	Front	0.204	0.076	0.133	0.002	0.280	0.339
		Back	0.195	0.130	0.264	0.006	0.325	0.465
	GSM1900Ant 1	Front	0.098	0.076	0.133	0.002	0.174	0.233
		Back	0.124	0.130	0.264	0.006	0.254	0.394
WCDMA	WCDMA Vant 0	Front	0.269	0.076	0.133	0.002	0.345	0.404
		Back	0.254	0.130	0.264	0.006	0.384	0.524
LTE	LTE Band 5Ant 0	Front	0.293	0.076	0.133	0.002	0.369	0.428
		Back	0.282	0.130	0.264	0.006	0.412	0.552
	LTE Band 12Ant 0	Front	0.230	0.076	0.133	0.002	0.306	0.365
		Back	0.241	0.130	0.264	0.006	0.371	0.511

Test Engineer: Nick Hu, Seven Xu, Bruce Li, Tony Zhang

16. Uncertainty Assessment

Per KDB 865664 D01 SAR measurement 100MHz to 6GHz, when the highest measured 1-g SAR within a frequency band is < 1.5 W/kg and the measured 10-g SAR within a frequency band is < 3.75 W/kg. The expanded SAR measurement uncertainty must be $\leq 30\%$, for a confidence interval of $k = 2$. If these conditions are met, extensive SAR measurement uncertainty analysis described in IEEE Std 1528-2013 is not required in SAR reports submitted for equipment approval. For this device, the highest measured 1-g SAR is less 1.5W/kg and highest measured 10-g SAR is less 3.75W/kg. Therefore, the measurement uncertainty table is not required in this report.

Declaration of Conformity:

The test results with all measurement uncertainty excluded is presented in accordance with the regulation limits or requirements declared by manufacturers.

Comments and Explanations:

The declared of product specification for EUT presented in the report are provided by the manufacturer, and the manufacturer takes all the responsibilities for the accuracy of product specification.

17. References

- [1] FCC 47 CFR Part 2 "Frequency Allocations and Radio Treaty Matters; General Rules and Regulations"
- [2] ANSI/IEEE Std. C95.1-1992, "IEEE Standard for Safety Levels with Respect to Human Exposure to Radio Frequency Electromagnetic Fields, 3 kHz to 300 GHz", September 1992
- [3] IEEE Std. 1528-2013, "IEEE Recommended Practice for Determining the Peak Spatial-Average Specific Absorption Rate (SAR) in the Human Head from Wireless Communications Devices: Measurement Techniques", Sep 2013
- [4] SPEAG DASY System Handbook
- [5] FCC KDB 248227 D01 v02r02, "SAR Guidance for IEEE 802.11 (WiFi) Transmitters", Oct 2015.
- [6] FCC KDB 447498 D01 v06, "Mobile and Portable Device RF Exposure Procedures and Equipment Authorization Policies", Oct 2015
- [7] FCC KDB 648474 D04 v01r03, "SAR Evaluation Considerations for Wireless Handsets", Oct 2015.
- [8] FCC KDB 941225 D01 v03r01, "3G SAR MEAUREMENT PROCEDURES", Oct 2015
- [9] FCC KDB 941225 D05 v02r05, "SAR Evaluation Considerations for LTE Devices", Dec 2015
- [10] FCC KDB 941225 D06 v02r01, "SAR Evaluation Procedures for Portable Devices with Wireless Router Capabilities", Oct 2015.
- [11] FCC KDB 865664 D01 v01r04, "SAR Measurement Requirements for 100 MHz to 6 GHz", Aug 2015.
- [12] FCC KDB 865664 D02 v01r02, "RF Exposure Compliance Reporting and Documentation Considerations" Oct 2015.



Appendix A. Plots of System Performance Check

The plots are shown as follows.

System Check_Head_750MHz**DUT: D750V3 - SN:1087**

Communication System: UID 0, CW (0); Frequency: 750 MHz; Duty Cycle: 1:1

Medium: HSL_750 Medium parameters used: $f = 750$ MHz; $\sigma = 0.898$ S/m; $\epsilon_r = 42.302$; $\rho = 1000$ kg/m³

Ambient Temperature : 23.1 °C; Liquid Temperature : 22.8 °C

DASY5 Configuration:

- Probe: EX3DV4 - SN7627; ConvF(10.47, 10.47, 10.47); Calibrated: 2021.2.10
- Sensor-Surface: 1.4mm (Mechanical Surface Detection)
- Electronics: DAE4 Sn1649; Calibrated: 2021.2.3
- Phantom: SAM Twin Phantom; Type: SAM Twin; Serial: TP-2024
- Measurement SW: DASY52, Version 52.10 (4); SEMCAD X Version 14.6.14 (7483)

Pin=50mW/Area Scan (61x61x1): Interpolated grid: dx=1.500 mm, dy=1.500 mm

Maximum value of SAR (interpolated) = 0.567 W/kg

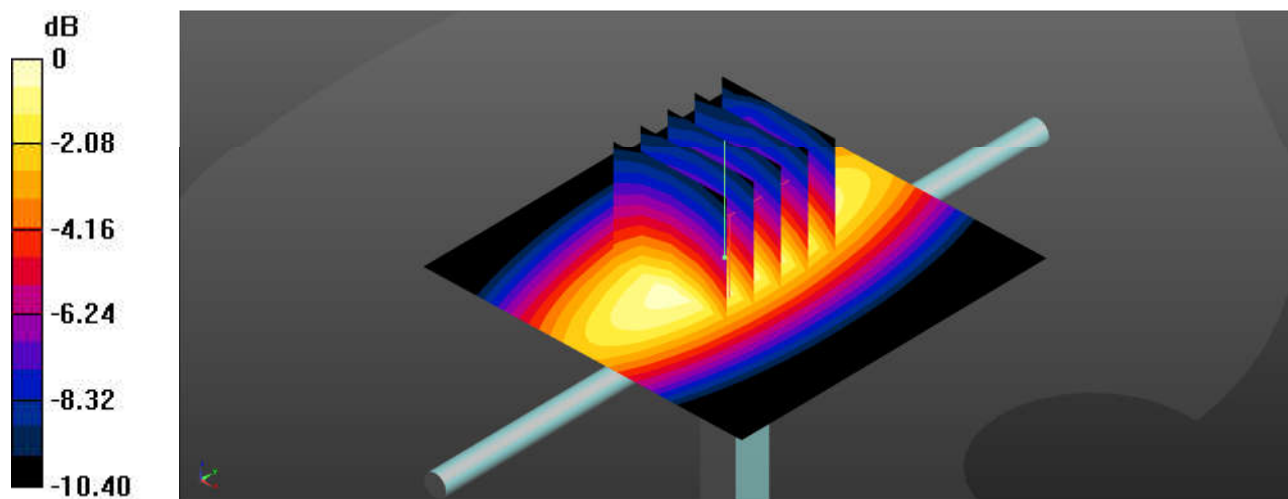
Pin=50mW/Zoom Scan (5x5x7)/Cube 0: Measurement grid: dx=8mm, dy=8mm, dz=5mm

Reference Value = 25.84 V/m; Power Drift = -0.01 dB

Peak SAR (extrapolated) = 0.648 W/kg

SAR(1 g) = 0.424 W/kg; SAR(10 g) = 0.280 W/kg

Maximum value of SAR (measured) = 0.570 W/kg



0 dB = 0.570 W/kg = -2.44 dBW/kg

System Check_Head_835MHz**DUT: D835V2 - SN:4d258**

Communication System: UID 0, CW (0); Frequency: 835 MHz; Duty Cycle: 1:1

Medium: HSL_835 Medium parameters used: $f = 835 \text{ MHz}$; $\sigma = 0.929 \text{ S/m}$; $\epsilon_r = 42.039$; $\rho = 1000 \text{ kg/m}^3$

Ambient Temperature : 23.2 °C; Liquid Temperature : 22.8 °C

DASY5 Configuration:

- Probe: EX3DV4 - SN7627; ConvF(10.21, 10.21, 10.21); Calibrated: 2021.2.10
- Sensor-Surface: 1.4mm (Mechanical Surface Detection)
- Electronics: DAE4 Sn1649; Calibrated: 2021.2.3
- Phantom: SAM Twin Phantom; Type: SAM Twin; Serial: TP-2024
- Measurement SW: DASY52, Version 52.10 (4); SEMCAD X Version 14.6.14 (7483)

Pin=50mW/Area Scan (61x61x1): Interpolated grid: $dx=1.500 \text{ mm}$, $dy=1.500 \text{ mm}$

Maximum value of SAR (interpolated) = 0.723 W/kg

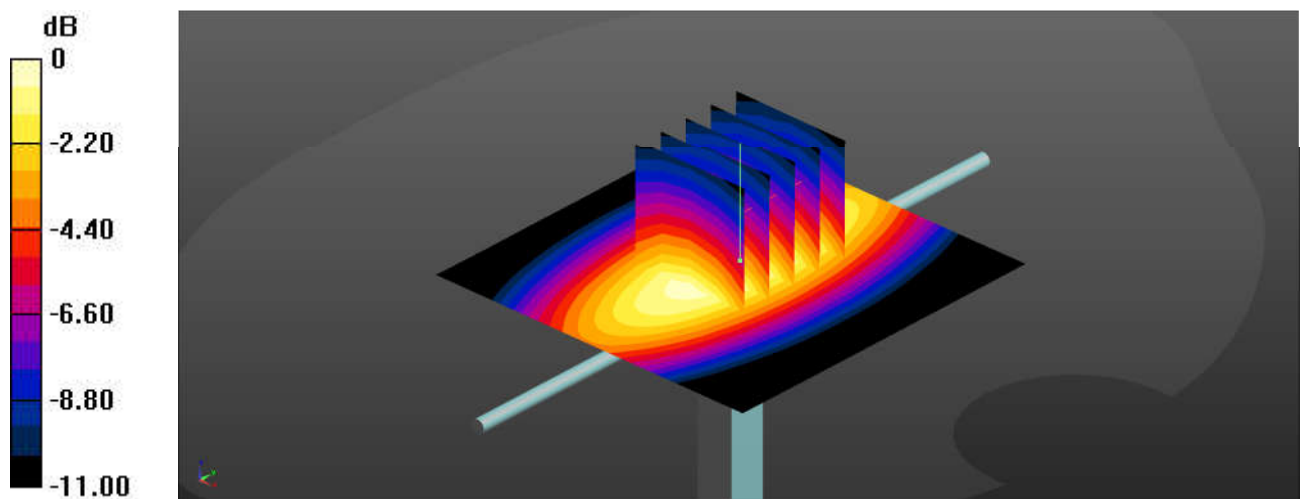
Pin=50mW/Zoom Scan (5x5x7)/Cube 0: Measurement grid: $dx=8\text{mm}$, $dy=8\text{mm}$, $dz=5\text{mm}$

Reference Value = 28.78 V/m; Power Drift = -0.02 dB

Peak SAR (extrapolated) = 0.830 W/kg

SAR(1 g) = 0.507 W/kg; SAR(10 g) = 0.303 W/kg

Maximum value of SAR (measured) = 0.719 W/kg



0 dB = 0.719 W/kg = -1.43 dBW/kg

System Check_Head_1900MHz**DUT: D1900V2 - SN:5d170**

Communication System: UID 0, CW (0); Frequency: 1900 MHz; Duty Cycle: 1:1

Medium: HSL_1900 Medium parameters used: $f = 1900$ MHz; $\sigma = 1.443$ S/m; $\epsilon_r = 40.364$; $\rho = 1000$ kg/m³

Ambient Temperature : 23.3 °C; Liquid Temperature : 22.6 °C

DASY5 Configuration:

- Probe: EX3DV4 - SN7627; ConvF(8.46, 8.46, 8.46); Calibrated: 2021.2.10
- Sensor-Surface: 1.4mm (Mechanical Surface Detection)
- Electronics: DAE4 Sn1649; Calibrated: 2021.2.3
- Phantom: SAM Twin Phantom; Type: SAM Twin; Serial: TP-2024
- Measurement SW: DASY52, Version 52.10 (4); SEMCAD X Version 14.6.14 (7483)

Pin=50mW/Area Scan (61x61x1): Interpolated grid: dx=1.500 mm, dy=1.500 mm

Maximum value of SAR (interpolated) = 3.20 W/kg

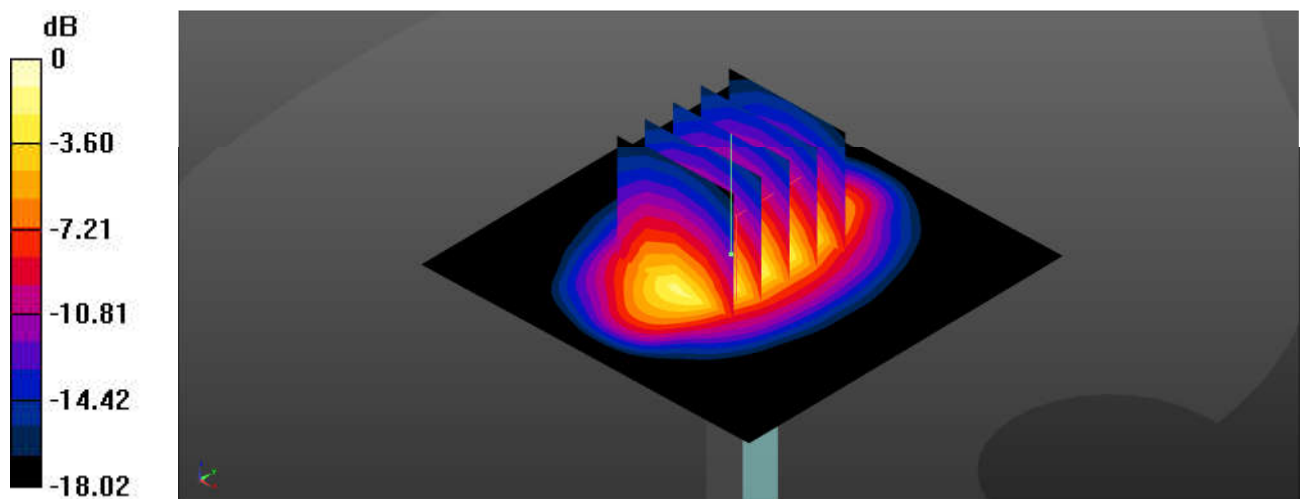
Pin=50mW/Zoom Scan (5x5x7)/Cube 0: Measurement grid: dx=8mm, dy=8mm, dz=5mm

Reference Value = 47.50 V/m; Power Drift = 0.07 dB

Peak SAR (extrapolated) = 3.90 W/kg

SAR(1 g) = 2.07 W/kg; SAR(10 g) = 1.07 W/kg

Maximum value of SAR (measured) = 3.24 W/kg



0 dB = 3.24 W/kg = 5.11 dBW/kg

System Check_Head_2450MHz**DUT: D2450V2 - SN:908**

Communication System: UID 0, CW (0); Frequency: 2450 MHz; Duty Cycle: 1:1

Medium: HSL_2450 Medium parameters used: $f = 2450$ MHz; $\sigma = 1.868$ S/m; $\epsilon_r = 40.798$; $\rho = 1000$ kg/m³

Ambient Temperature : 23.3 °C; Liquid Temperature : 22.9 °C

DASY5 Configuration:

- Probe: EX3DV4 - SN7627; ConvF(8, 8, 8); Calibrated: 2021.2.10
- Sensor-Surface: 1.4mm (Mechanical Surface Detection)
- Electronics: DAE4 Sn1649; Calibrated: 2021.2.3
- Phantom: SAM Twin Phantom; Type: SAM Twin; Serial: TP-2024
- Measurement SW: DASY52, Version 52.10 (4); SEMCAD X Version 14.6.14 (7483)

Pin=50mW/Area Scan (71x71x1): Interpolated grid: dx=1.200 mm, dy=1.200 mm

Maximum value of SAR (interpolated) = 4.20 W/kg

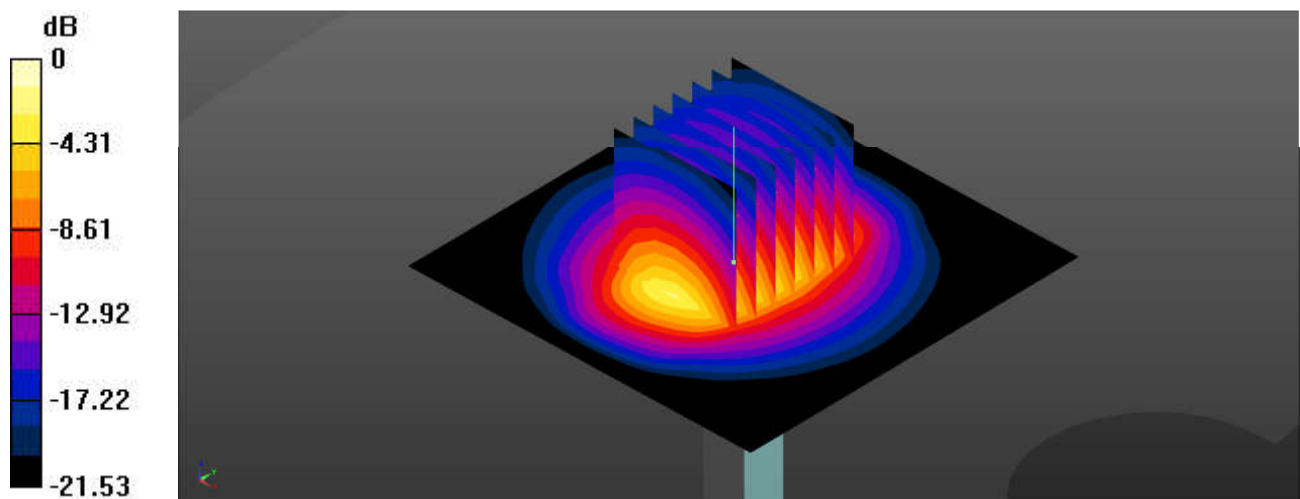
Pin=50mW/Zoom Scan (7x7x7)/Cube 0: Measurement grid: dx=5mm, dy=5mm, dz=5mm

Reference Value = 49.02 V/m; Power Drift = -0.02 dB

Peak SAR (extrapolated) = 5.18 W/kg

SAR(1 g) = 2.54 W/kg; SAR(10 g) = 1.19 W/kg

Maximum value of SAR (measured) = 4.22 W/kg



0 dB = 4.22 W/kg = 6.25 dBW/kg

System Check_Head_5250MHz**DUT: D5GHzV2 - SN:1113**

Communication System: UID 0, CW (0); Frequency: 5250 MHz; Duty Cycle: 1:1

Medium: HSL_5000 Medium parameters used: $f = 5250$ MHz; $\sigma = 4.578$ S/m; $\epsilon_r = 36.306$; $\rho = 1000$ kg/m³

Ambient Temperature : 23.4 °C; Liquid Temperature : 22.8 °C

DASY5 Configuration:

- Probe: EX3DV4 - SN7627; ConvF(5.69, 5.69, 5.69); Calibrated: 2021.2.10
- Sensor-Surface: 1.4mm (Mechanical Surface Detection)
- Electronics: DAE4 Sn1649; Calibrated: 2021.2.3
- Phantom: SAM Twin Phantom; Type: SAM Twin; Serial: TP-2024
- Measurement SW: DASY52, Version 52.10 (4); SEMCAD X Version 14.6.14 (7483)

Pin=50mW/Area Scan (91x91x1): Interpolated grid: dx=1.000 mm, dy=1.000 mm

Maximum value of SAR (interpolated) = 7.78 W/kg

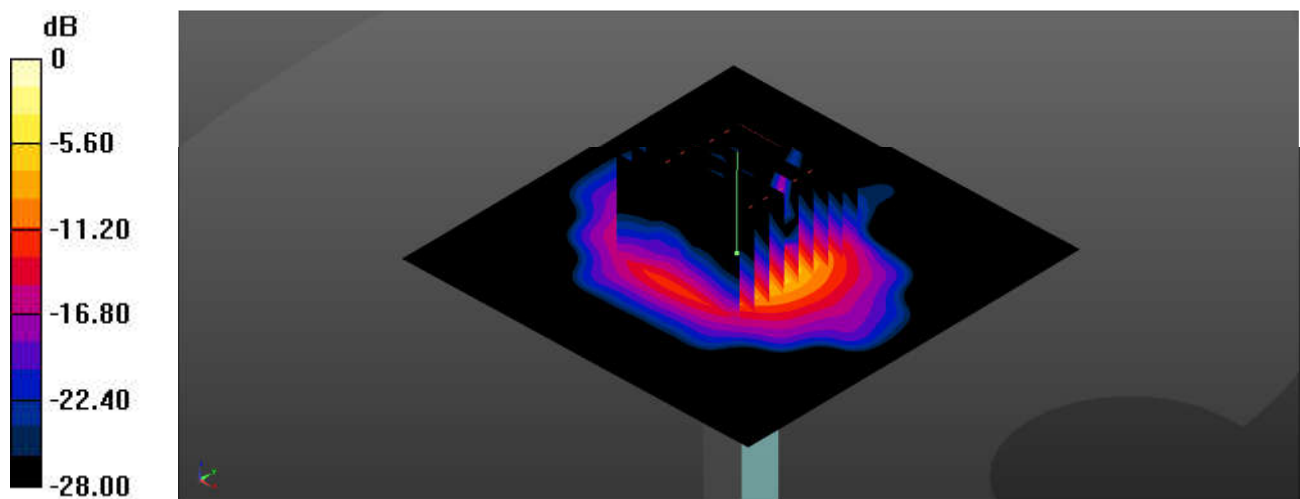
Pin=50mW/Zoom Scan (9x9x7)/Cube 0: Measurement grid: dx=4mm, dy=4mm, dz=1.4mm

Reference Value = 47.56 V/m; Power Drift = -0.09 dB

Peak SAR (extrapolated) = 13.7 W/kg

SAR(1 g) = 3.76 W/kg; SAR(10 g) = 1.18 W/kg

Maximum value of SAR (measured) = 8.43 W/kg



0 dB = 8.43 W/kg = 9.26 dBW/kg

System Check_Head_5600MHz**DUT: D5GHzV2 - SN:1113**

Communication System: UID 0, CW (0); Frequency: 5600 MHz; Duty Cycle: 1:1

Medium: HSL_5000 Medium parameters used: $f = 5600$ MHz; $\sigma = 4.95$ S/m; $\epsilon_r = 35.731$; $\rho = 1000$ kg/m³

Ambient Temperature : 23.3 °C; Liquid Temperature : 22.7 °C

DASY5 Configuration:

- Probe: EX3DV4 - SN7627; ConvF(4.89, 4.89, 4.89); Calibrated: 2021.2.10
- Sensor-Surface: 1.4mm (Mechanical Surface Detection)
- Electronics: DAE4 Sn1649; Calibrated: 2021.2.3
- Phantom: SAM Twin Phantom; Type: SAM Twin; Serial: TP-2024
- Measurement SW: DASY52, Version 52.10 (4); SEMCAD X Version 14.6.14 (7483)

Pin=50mW/Area Scan (91x91x1): Interpolated grid: dx=1.000 mm, dy=1.000 mm

Maximum value of SAR (interpolated) = 9.03 W/kg

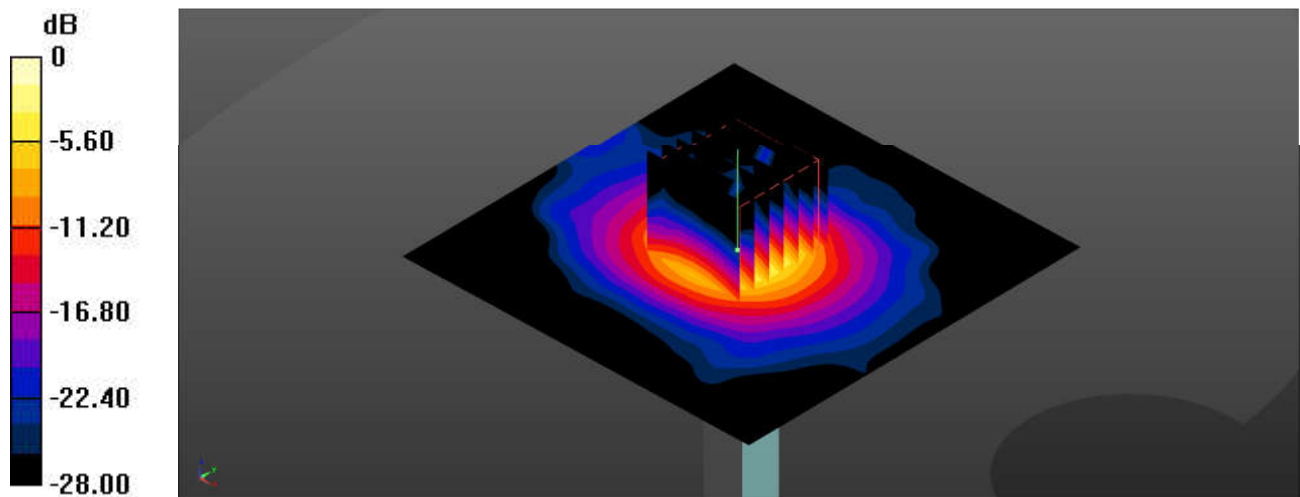
Pin=50mW/Zoom Scan (7x7x7)/Cube 0: Measurement grid: dx=4mm, dy=4mm, dz=1.4mm

Reference Value = 48.71 V/m; Power Drift = -0.09 dB

Peak SAR (extrapolated) = 16.2 W/kg

SAR(1 g) = 3.84 W/kg; SAR(10 g) = 1.16 W/kg

Maximum value of SAR (measured) = 9.64 W/kg



0 dB = 9.64 W/kg = 9.84 dBW/kg

System Check_Head_5750MHz**DUT: D5GHzV2 - SN:1113**

Communication System: UID 0, CW (0); Frequency: 5750 MHz; Duty Cycle: 1:1

Medium: HSL_5000 Medium parameters used: $f = 5750$ MHz; $\sigma = 5.132$ S/m; $\epsilon_r = 35.585$; $\rho = 1000$ kg/m³

Ambient Temperature : 23.2 °C; Liquid Temperature : 22.6 °C

DASY5 Configuration:

- Probe: EX3DV4 - SN7627; ConvF(4.92, 4.92, 4.92); Calibrated: 2021.2.10
- Sensor-Surface: 1.4mm (Mechanical Surface Detection)
- Electronics: DAE4 Sn1649; Calibrated: 2021.2.3
- Phantom: SAM Twin Phantom; Type: SAM Twin; Serial: TP-2024
- Measurement SW: DASY52, Version 52.10 (4); SEMCAD X Version 14.6.14 (7483)

Pin=50mW/Area Scan (91x91x1): Interpolated grid: dx=1.000 mm, dy=1.000 mm

Maximum value of SAR (interpolated) = 8.25 W/kg

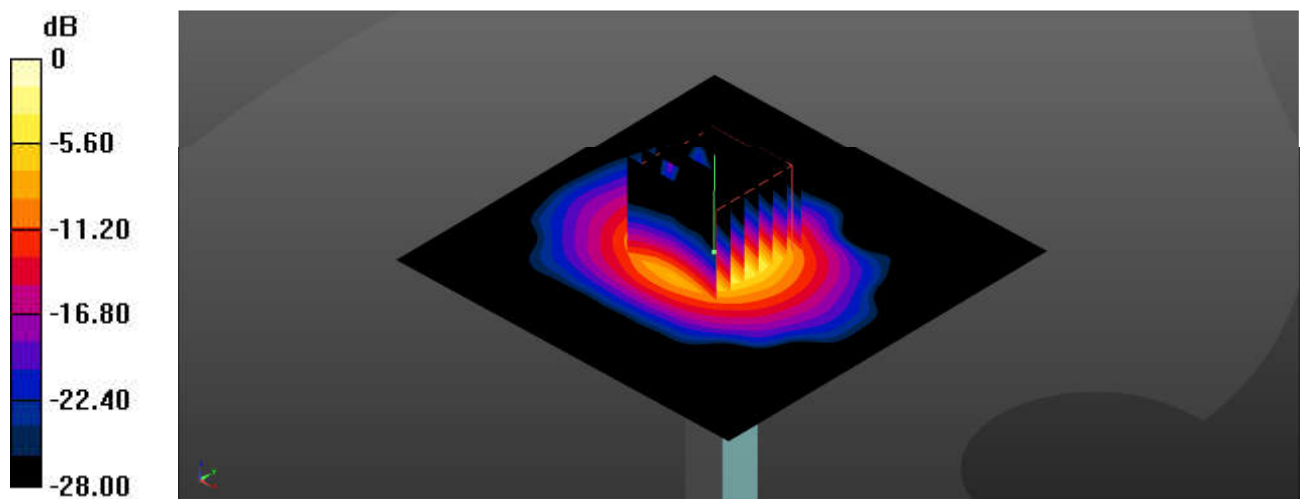
Pin=50mW/Zoom Scan (7x7x7)/Cube 0: Measurement grid: dx=4mm, dy=4mm, dz=1.4mm

Reference Value = 44.59 V/m; Power Drift = 0.06 dB

Peak SAR (extrapolated) = 15.8 W/kg

SAR(1 g) = 3.68 W/kg; SAR(10 g) = 1.22 W/kg

Maximum value of SAR (measured) = 8.95 W/kg



0 dB = 8.95 W/kg = 9.52 dBW/kg



Appendix B. Plots of SAR Measurement

The plots are shown as follows.

01_GSM850_GPRS (4 Tx slots)_Right Cheek_0mm_Ch189

Communication System: UID 0, GSM850 (0); Frequency: 836.4 MHz; Duty Cycle: 1:2.08

Medium: HSL_835 Medium parameters used: $f = 836.4$ MHz; $\sigma = 0.929$ S/m; $\epsilon_r = 42.043$; $\rho = 1000$ kg/m³

Ambient Temperature : 23.2 °C; Liquid Temperature : 22.8 °C

DASY5 Configuration:

- Probe: EX3DV4 - SN7627; ConvF(10.21, 10.21, 10.21); Calibrated: 2021.2.10
- Sensor-Surface: 1.4mm (Mechanical Surface Detection)
- Electronics: DAE4 Sn1649; Calibrated: 2021.2.3
- Phantom: SAM Twin Phantom; Type: SAM Twin; Serial: TP-2024
- Measurement SW: DASY52, Version 52.10 (4); SEMCAD X Version 14.6.14 (7483)

Area Scan (71x71x1): Interpolated grid: dx=1.500 mm, dy=1.500 mm

Maximum value of SAR (interpolated) = 0.210 W/kg

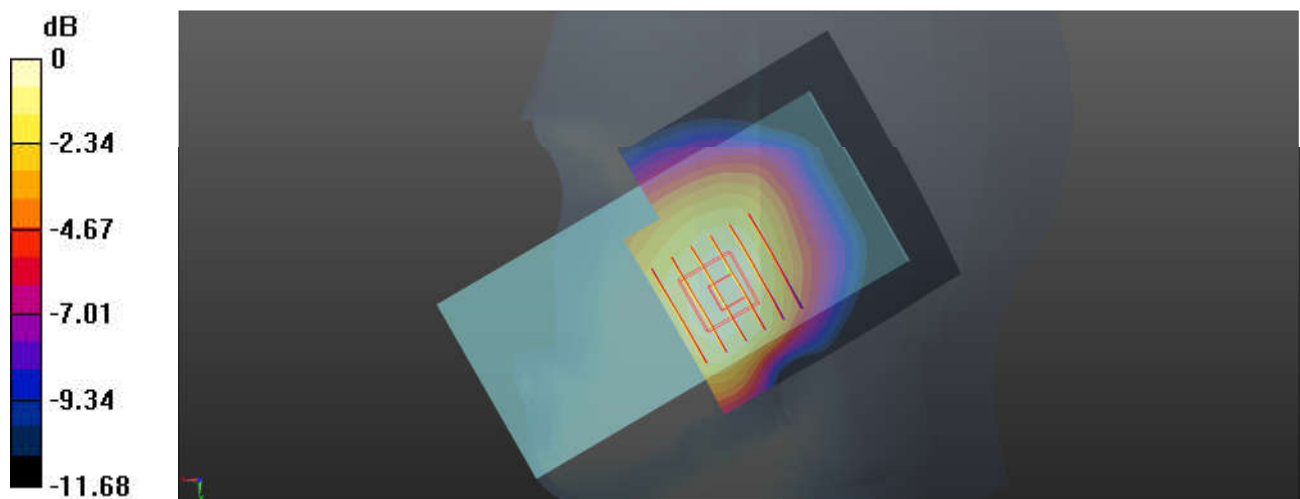
Zoom Scan (6x6x7)/Cube 0: Measurement grid: dx=8mm, dy=8mm, dz=5mm

Reference Value = 3.996 V/m; Power Drift = 0.02 dB

Peak SAR (extrapolated) = 0.253 W/kg

SAR(1 g) = 0.195 W/kg; SAR(10 g) = 0.146 W/kg

Maximum value of SAR (measured) = 0.214 W/kg



0 dB = 0.214 W/kg = -6.70 dBW/kg

02_GSM1900_GPRS (3 Tx slots)_Left Cheek_0mm_Ch661

Communication System: UID 0, PCS (0); Frequency: 1880 MHz; Duty Cycle: 1:2.77

Medium: HSL_1900 Medium parameters used: $f = 1880$ MHz; $\sigma = 1.432$ S/m; $\epsilon_r = 40.385$; $\rho = 1000$ kg/m³

Ambient Temperature : 23.3 °C; Liquid Temperature : 22.6 °C

DASY5 Configuration:

- Probe: EX3DV4 - SN7627; ConvF(8.46, 8.46, 8.46); Calibrated: 2021.2.10
- Sensor-Surface: 1.4mm (Mechanical Surface Detection)
- Electronics: DAE4 Sn1649; Calibrated: 2021.2.3
- Phantom: SAM Twin Phantom; Type: SAM Twin; Serial: TP-2024
- Measurement SW: DASY52, Version 52.10 (4); SEMCAD X Version 14.6.14 (7483)

Area Scan (71x81x1): Interpolated grid: dx=1.500 mm, dy=1.500 mm

Maximum value of SAR (interpolated) = 0.0703 W/kg

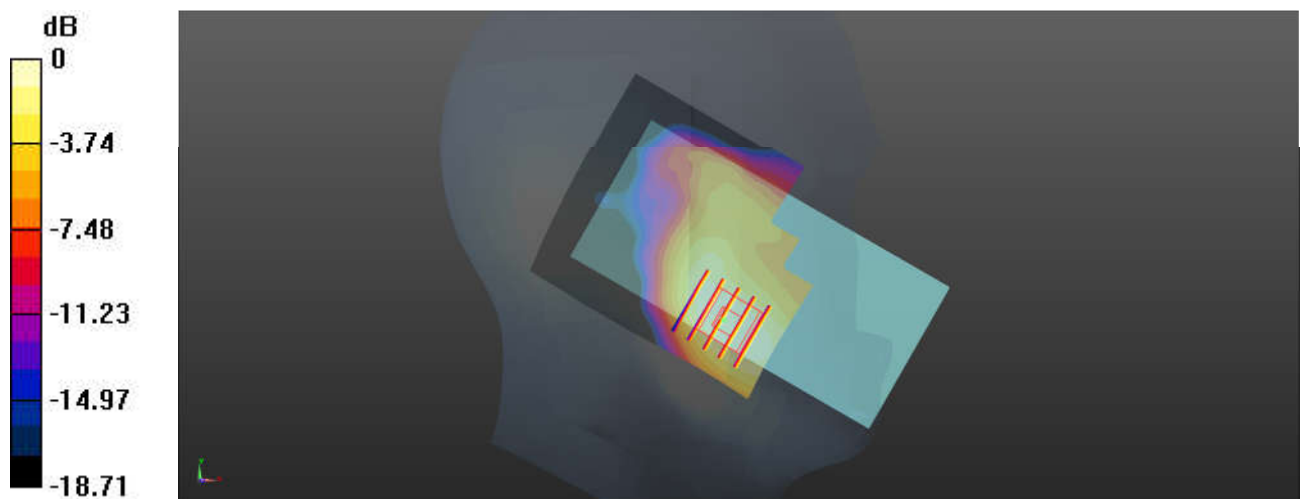
Zoom Scan (5x5x7)/Cube 0: Measurement grid: dx=8mm, dy=8mm, dz=5mm

Reference Value = 1.363 V/m; Power Drift = 0.03 dB

Peak SAR (extrapolated) = 0.0960 W/kg

SAR(1 g) = 0.077 W/kg; SAR(10 g) = 0.038 W/kg

Maximum value of SAR (measured) = 0.0717 W/kg



0 dB = 0.0717 W/kg = -11.44 dBW/kg

03_WCDMA V_RMC 12.2Kbps_Right Cheek_0mm_Ch4182

Communication System: UID 0, WCDMA (0); Frequency: 836.4 MHz; Duty Cycle: 1:1
Medium: HSL_835 Medium parameters used: $f = 836.4$ MHz; $\sigma = 0.929$ S/m; $\epsilon_r = 42.043$; $\rho = 1000$ kg/m³

Ambient Temperature : 23.2 °C; Liquid Temperature : 22.8 °C

DASY5 Configuration:

- Probe: EX3DV4 - SN7627; ConvF(10.21, 10.21, 10.21); Calibrated: 2021.2.10
- Sensor-Surface: 1.4mm (Mechanical Surface Detection)
- Electronics: DAE4 Sn1649; Calibrated: 2021.2.3
- Phantom: SAM Twin Phantom; Type: SAM Twin; Serial: TP-2024
- Measurement SW: DASY52, Version 52.10 (4); SEMCAD X Version 14.6.14 (7483)

Area Scan (71x71x1): Interpolated grid: dx=1.500 mm, dy=1.500 mm

Maximum value of SAR (interpolated) = 0.295 W/kg

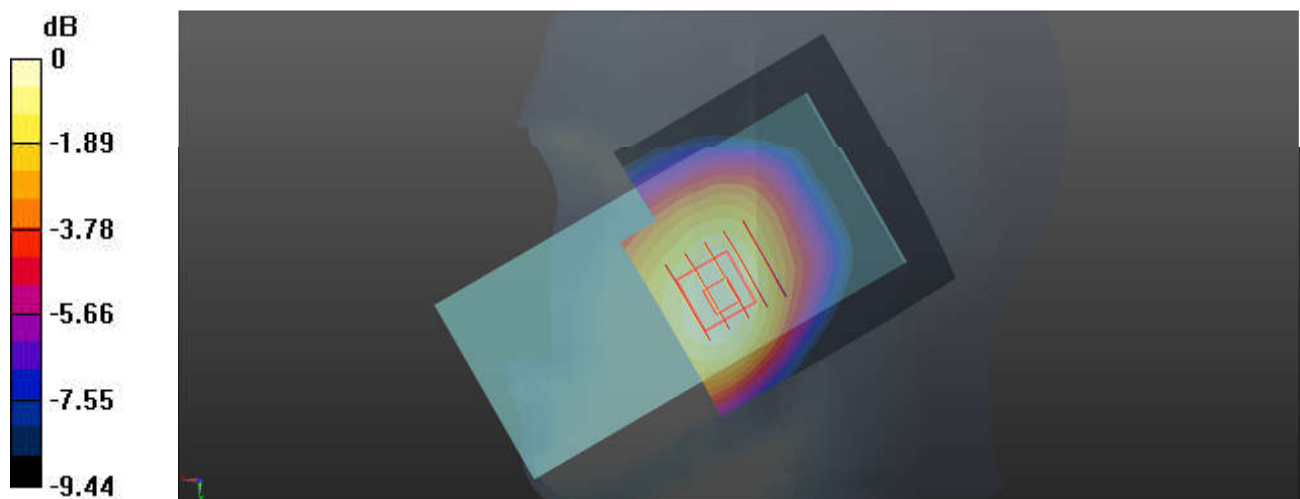
Zoom Scan (5x5x7)/Cube 0: Measurement grid: dx=8mm, dy=8mm, dz=5mm

Reference Value = 5.369 V/m; Power Drift = 0.09 dB

Peak SAR (extrapolated) = 0.343 W/kg

SAR(1 g) = 0.265 W/kg; SAR(10 g) = 0.200 W/kg

Maximum value of SAR (measured) = 0.288 W/kg



0 dB = 0.288 W/kg = -5.41 dBW/kg

04_LTE Band 12_10M_QPSK_1RB_0Offset_Right Cheek_0mm_Ch23095

Communication System: UID 0, LTE-FDD (0); Frequency: 707.5 MHz; Duty Cycle: 1:1

Medium: HSL_750 Medium parameters used: $f = 707.5$ MHz; $\sigma = 0.881$ S/m; $\epsilon_r = 42.466$; $\rho = 1000$ kg/m³

Ambient Temperature : 23.1 °C; Liquid Temperature : 22.8 °C

DASY5 Configuration:

- Probe: EX3DV4 - SN7627; ConvF(10.47, 10.47, 10.47); Calibrated: 2021.2.10
- Sensor-Surface: 1.4mm (Mechanical Surface Detection)
- Electronics: DAE4 Sn1649; Calibrated: 2021.2.3
- Phantom: SAM Twin Phantom; Type: SAM Twin; Serial: TP-2024
- Measurement SW: DASY52, Version 52.10 (4); SEMCAD X Version 14.6.14 (7483)

Area Scan (71x71x1): Interpolated grid: dx=1.500 mm, dy=1.500 mm

Maximum value of SAR (interpolated) = 0.229 W/kg

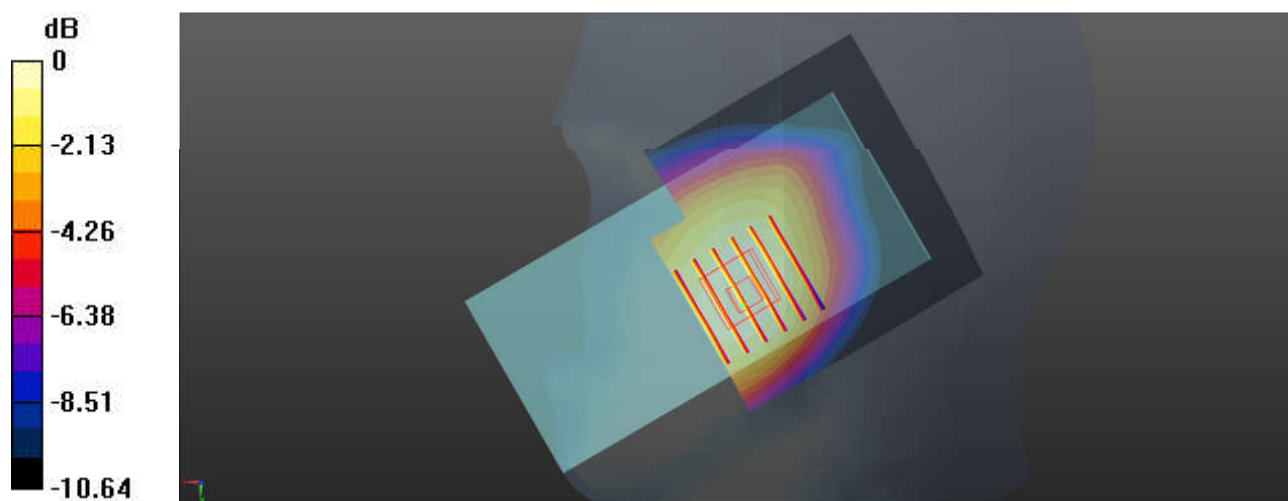
Zoom Scan (6x6x7)/Cube 0: Measurement grid: dx=8mm, dy=8mm, dz=5mm

Reference Value = 4.962 V/m; Power Drift = 0.05 dB

Peak SAR (extrapolated) = 0.261 W/kg

SAR(1 g) = 0.210 W/kg; SAR(10 g) = 0.162 W/kg

Maximum value of SAR (measured) = 0.227 W/kg



0 dB = 0.227 W/kg = -6.44 dBW/kg

05_LTE Band 5_10M_QPSK_1RB_0Offset_Right Cheek_0mm_Ch20525

Communication System: UID 0, LTE-FDD (0); Frequency: 836.5 MHz; Duty Cycle: 1:1

Medium: HSL_835 Medium parameters used: $f = 836.5$ MHz; $\sigma = 0.929$ S/m; $\epsilon_r = 42.043$; $\rho = 1000$ kg/m³

Ambient Temperature : 23.2 °C; Liquid Temperature : 22.8 °C

DASY5 Configuration:

- Probe: EX3DV4 - SN7627; ConvF(10.21, 10.21, 10.21); Calibrated: 2021.2.10
- Sensor-Surface: 1.4mm (Mechanical Surface Detection)
- Electronics: DAE4 Sn1649; Calibrated: 2021.2.3
- Phantom: SAM Twin Phantom; Type: SAM Twin; Serial: TP-2024
- Measurement SW: DASY52, Version 52.10 (4); SEMCAD X Version 14.6.14 (7483)

Area Scan (71x71x1): Interpolated grid: dx=1.500 mm, dy=1.500 mm

Maximum value of SAR (interpolated) = 0.245 W/kg

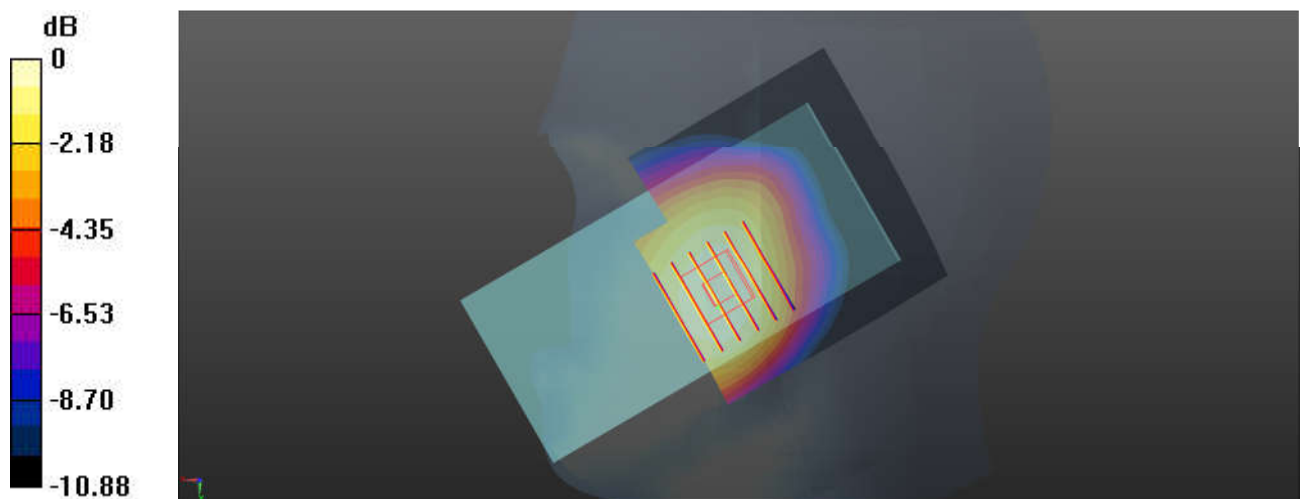
Zoom Scan (6x6x7)/Cube 0: Measurement grid: dx=8mm, dy=8mm, dz=5mm

Reference Value = 3.669 V/m; Power Drift = 0.04 dB

Peak SAR (extrapolated) = 0.277 W/kg

SAR(1 g) = 0.223 W/kg; SAR(10 g) = 0.172 W/kg

Maximum value of SAR (measured) = 0.243 W/kg



0 dB = 0.243 W/kg = -6.14 dBW/kg

06_WLAN2.4GHz_802.11b 1Mbps_Right Tilted_0mm_Ch6

Communication System: UID 0, WLAN2.4GHz (0); Frequency: 2437 MHz; Duty Cycle: 1:1
Medium: HSL_2450 Medium parameters used: $f = 2437$ MHz; $\sigma = 1.859$ S/m; $\epsilon_r = 40.803$; $\rho = 1000$ kg/m³

Ambient Temperature : 23.3 °C; Liquid Temperature : 22.9 °C

DASY5 Configuration:

- Probe: EX3DV4 - SN7627; ConvF(8, 8, 8); Calibrated: 2021.2.10
- Sensor-Surface: 1.4mm (Mechanical Surface Detection)
- Electronics: DAE4 Sn1649; Calibrated: 2021.2.3
- Phantom: SAM Twin Phantom; Type: SAM Twin; Serial: TP-2024
- Measurement SW: DASY52, Version 52.10 (4); SEMCAD X Version 14.6.14 (7483)

Area Scan (91x81x1): Interpolated grid: dx=1.200 mm, dy=1.200 mm

Maximum value of SAR (interpolated) = 0.331 W/kg

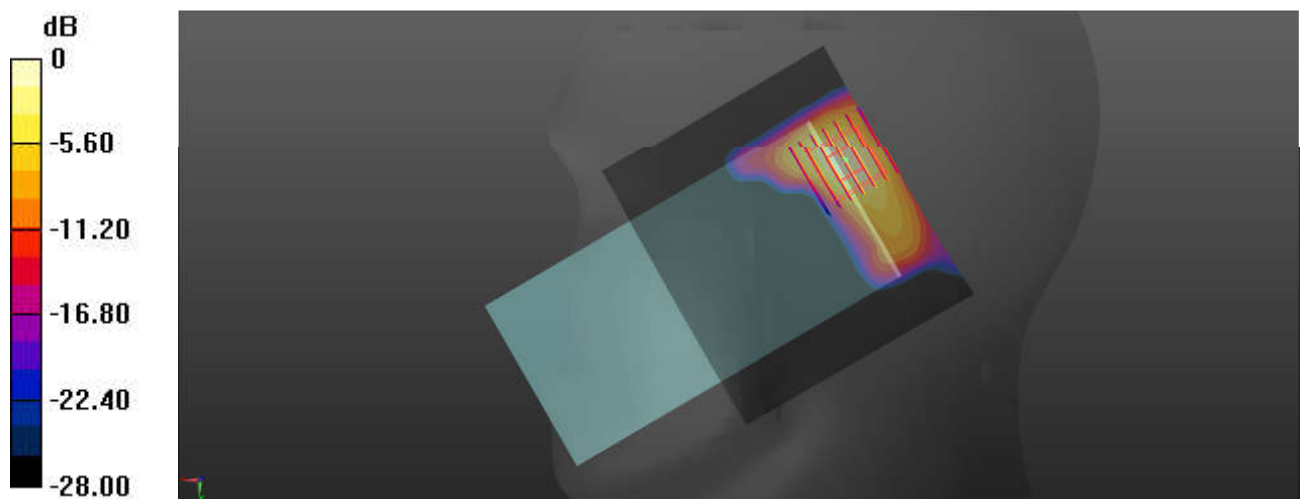
Zoom Scan (7x7x7)/Cube 0: Measurement grid: dx=5mm, dy=5mm, dz=5mm

Reference Value = 12.70 V/m; Power Drift = 0.01 dB

Peak SAR (extrapolated) = 0.446 W/kg

SAR(1 g) = 0.204 W/kg; SAR(10 g) = 0.079 W/kg

Maximum value of SAR (measured) = 0.346 W/kg



0 dB = 0.346 W/kg = -4.61 dBW/kg

07_WLAN5GHz_802.11ac-VHT80 MCS0_Left Cheek_0mm_Ch58

Communication System: UID 0, WLAN5GHz (0); Frequency: 5290 MHz; Duty Cycle: 1:1.075

Medium: HSL_5000 Medium parameters used: $f = 5290$ MHz; $\sigma = 4.616$ S/m; $\epsilon_r = 36.274$; $\rho = 1000$ kg/m³

Ambient Temperature : 23.4 °C; Liquid Temperature : 22.8 °C

DASY5 Configuration:

- Probe: EX3DV4 - SN7627; ConvF(5.69, 5.69, 5.69); Calibrated: 2021.2.10
- Sensor-Surface: 1.4mm (Mechanical Surface Detection)
- Electronics: DAE4 Sn1649; Calibrated: 2021.2.3
- Phantom: SAM Twin Phantom; Type: SAM Twin; Serial: TP-2024
- Measurement SW: DASY52, Version 52.10 (4); SEMCAD X Version 14.6.14 (7483)

Area Scan (111x101x1): Interpolated grid: dx=1.000 mm, dy=1.000 mm

Maximum value of SAR (interpolated) = 0.433 W/kg

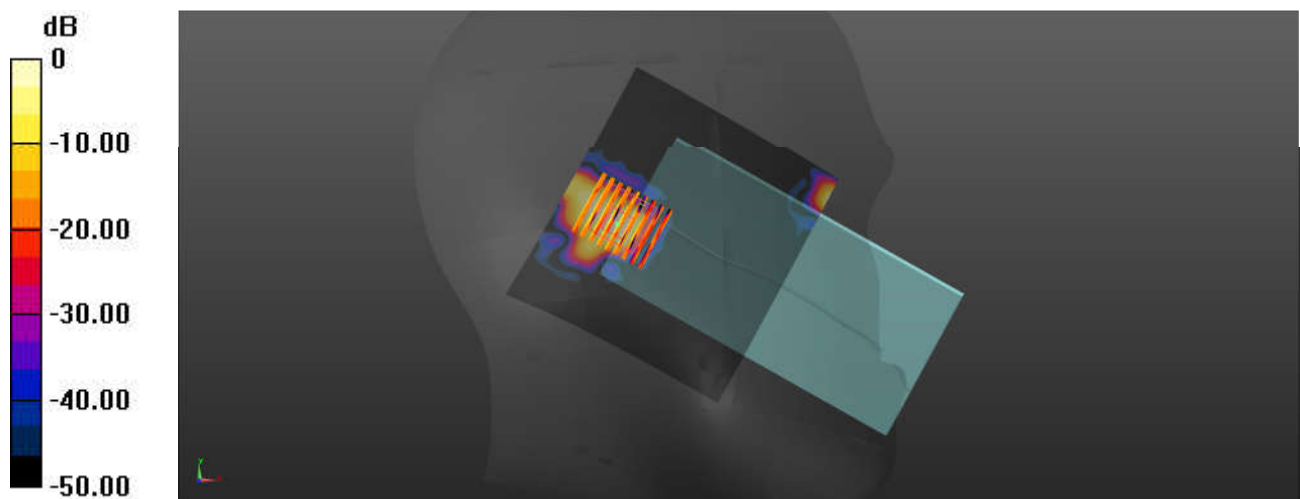
Zoom Scan (8x9x7)/Cube 0: Measurement grid: dx=4mm, dy=4mm, dz=1.4mm

Reference Value = 3.825 V/m; Power Drift = -0.10 dB

Peak SAR (extrapolated) = 1.04 W/kg

SAR(1 g) = 0.045 W/kg; SAR(10 g) = 0.00957 W/kg

Maximum value of SAR (measured) = 0.402 W/kg



0 dB = 0.402 W/kg = -3.96 dBW/kg

08_WLAN5GHz_802.11ac-VHT80 MCS0_Left Cheek_0mm_Ch138

Communication System: UID 0, WLAN5GHz (0); Frequency: 5690 MHz; Duty Cycle: 1:1.075

Medium: HSL_5000 Medium parameters used: $f = 5690$ MHz; $\sigma = 5.06$ S/m; $\epsilon_r = 35.668$; $\rho = 1000$ kg/m³

Ambient Temperature : 23.2 °C; Liquid Temperature : 22.6 °C

DASY5 Configuration:

- Probe: EX3DV4 - SN7627; ConvF(4.92, 4.92, 4.92); Calibrated: 2021.2.10
- Sensor-Surface: 1.4mm (Mechanical Surface Detection)
- Electronics: DAE4 Sn1649; Calibrated: 2021.2.3
- Phantom: SAM Twin Phantom; Type: SAM Twin; Serial: TP-2024
- Measurement SW: DASY52, Version 52.10 (4); SEMCAD X Version 14.6.14 (7483)

Area Scan (111x101x1): Interpolated grid: dx=1.000 mm, dy=1.000 mm

Maximum value of SAR (interpolated) = 0.599 W/kg

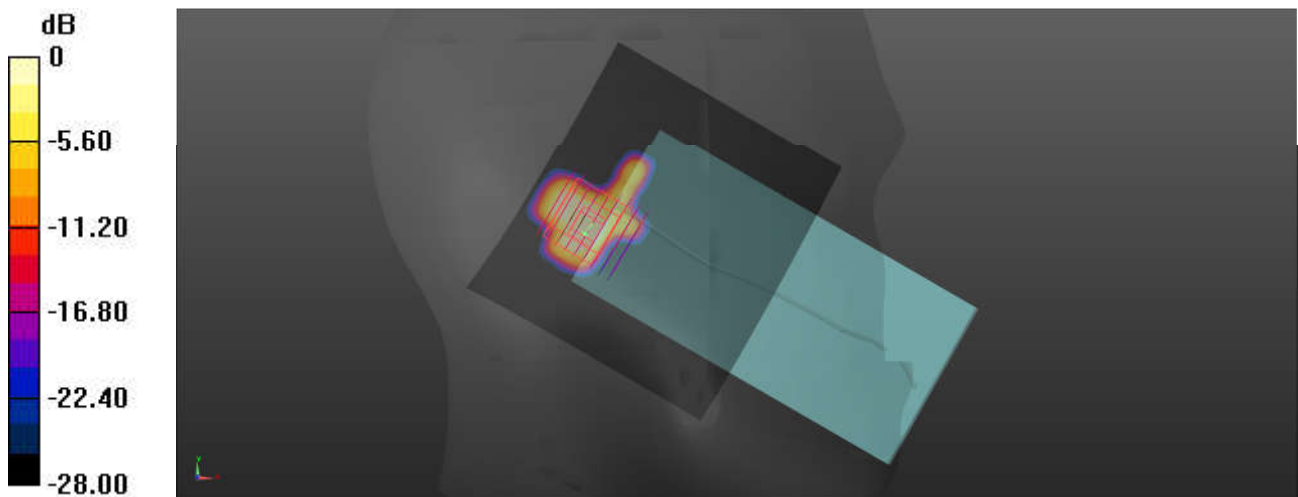
Zoom Scan (8x9x7)/Cube 0: Measurement grid: dx=4mm, dy=4mm, dz=1.4mm

Reference Value = 3.512 V/m; Power Drift = -0.13 dB

Peak SAR (extrapolated) = 0.951 W/kg

SAR(1 g) = 0.098 W/kg; SAR(10 g) = 0.034 W/kg

Maximum value of SAR (measured) = 0.333 W/kg



0 dB = 0.333 W/kg = -4.78 dBW/kg

09_WLAN5GHz_802.11ac-VHT80 MCS0_Left Cheek_0mm_Ch155

Communication System: UID 0, WLAN5GHz (0); Frequency: 5775 MHz; Duty Cycle: 1:1.075

Medium: HSL_5000 Medium parameters used: $f = 5775$ MHz; $\sigma = 5.134$ S/m; $\epsilon_r = 35.564$; $\rho = 1000$ kg/m³

Ambient Temperature : 23.2 °C; Liquid Temperature : 22.6 °C

DASY5 Configuration:

- Probe: EX3DV4 - SN7627; ConvF(4.92, 4.92, 4.92); Calibrated: 2021.2.10
- Sensor-Surface: 1.4mm (Mechanical Surface Detection)
- Electronics: DAE4 Sn1649; Calibrated: 2021.2.3
- Phantom: SAM Twin Phantom; Type: SAM Twin; Serial: TP-2024
- Measurement SW: DASY52, Version 52.10 (4); SEMCAD X Version 14.6.14 (7483)

Area Scan (111x101x1): Interpolated grid: dx=1.000 mm, dy=1.000 mm

Maximum value of SAR (interpolated) = 0.672 W/kg

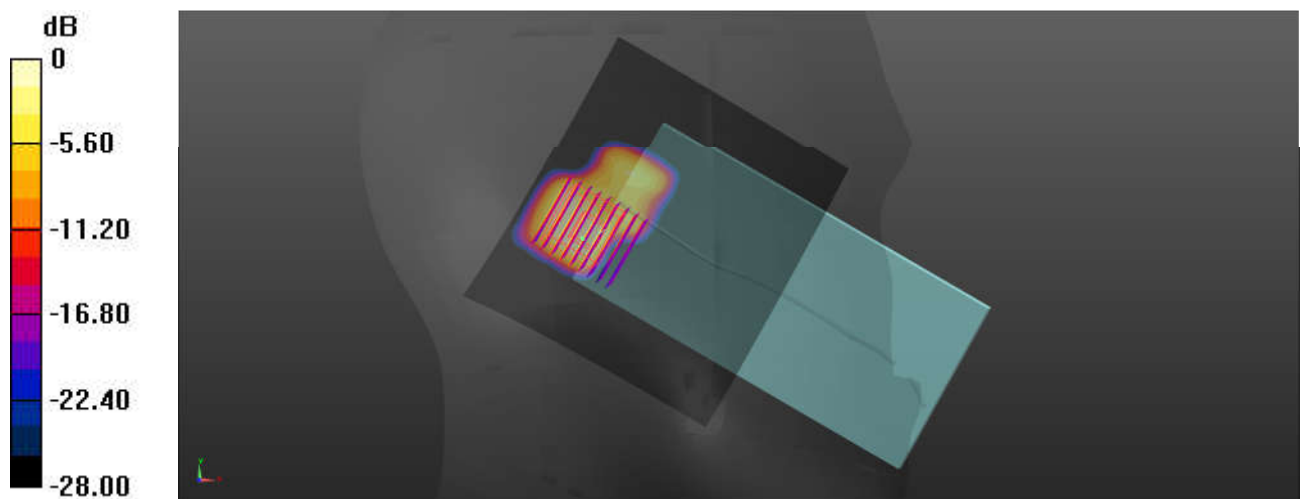
Zoom Scan (8x9x7)/Cube 0: Measurement grid: dx=4mm, dy=4mm, dz=1.4mm

Reference Value = 4.962 V/m; Power Drift = -0.08 dB

Peak SAR (extrapolated) = 0.612 W/kg

SAR(1 g) = 0.141 W/kg; SAR(10 g) = 0.049 W/kg

Maximum value of SAR (measured) = 0.376 W/kg



0 dB = 0.376 W/kg = -4.25 dBW/kg

10_Bluetooth_1Mbps_Right Tilted_0mm_Ch78

Communication System: UID 0, Bluetooth (0); Frequency: 2480 MHz; Duty Cycle: 1:1.298
Medium: HSL_2450 Medium parameters used: $f = 2480$ MHz; $\sigma = 1.888$ S/m; $\epsilon_r = 40.792$; $\rho = 1000$ kg/m³

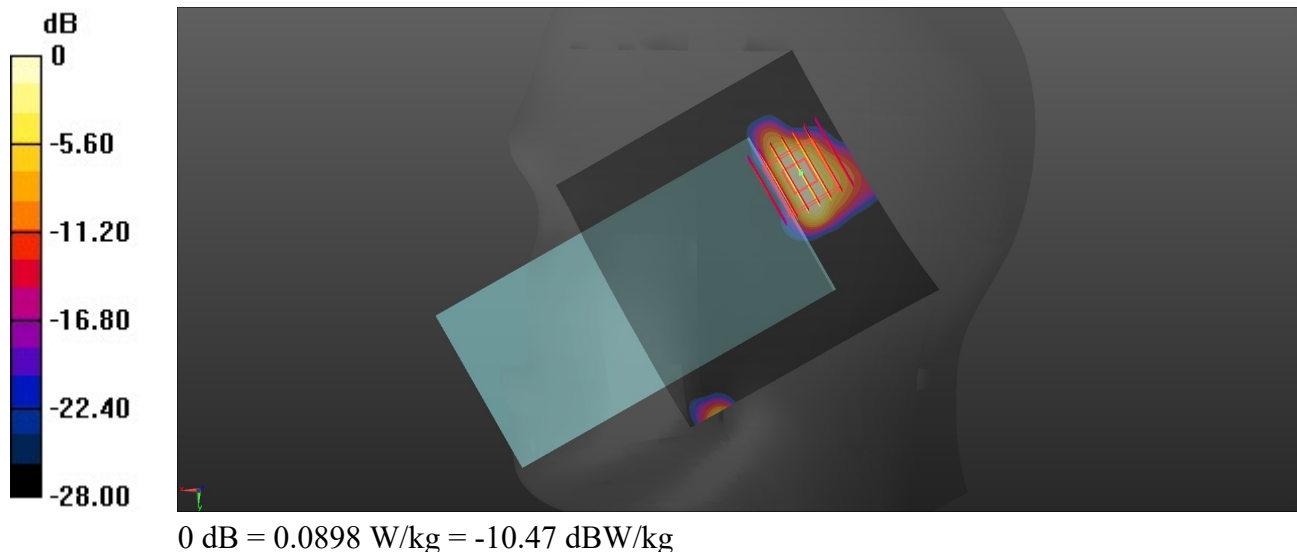
Ambient Temperature : 23.3 °C; Liquid Temperature : 22.9 °C

DASY5 Configuration:

- Probe: EX3DV4 - SN7627; ConvF(8, 8, 8); Calibrated: 2021.2.10
- Sensor-Surface: 1.4mm (Mechanical Surface Detection)
- Electronics: DAE4 Sn1649; Calibrated: 2021.2.3
- Phantom: SAM Twin Phantom; Type: SAM Twin; Serial: TP-2024
- Measurement SW: DASY52, Version 52.10 (4); SEMCAD X Version 14.6.14 (7483)

Area Scan (91x91x1): Interpolated grid: $dx=1.200$ mm, $dy=1.200$ mm
Maximum value of SAR (interpolated) = 0.154 W/kg

Zoom Scan (7x7x7)/Cube 0: Measurement grid: $dx=5$ mm, $dy=5$ mm, $dz=5$ mm
Reference Value = 7.737 V/m; Power Drift = 0.02 dB
Peak SAR (extrapolated) = 0.141 W/kg
SAR(1 g) = 0.062 W/kg; SAR(10 g) = 0.016 W/kg
Maximum value of SAR (measured) = 0.0898 W/kg



11_GSM850_GPRS (4 Tx slots)_Right Side_10mm_Ch189

Communication System: UID 0, GSM850 (0); Frequency: 836.4 MHz; Duty Cycle: 1:2.08

Medium: HSL_835 Medium parameters used: $f = 836.4$ MHz; $\sigma = 0.929$ S/m; $\epsilon_r = 42.043$; $\rho = 1000$ kg/m³

Ambient Temperature : 23.2 °C; Liquid Temperature : 22.8 °C

DASY5 Configuration:

- Probe: EX3DV4 - SN7627; ConvF(10.21, 10.21, 10.21); Calibrated: 2021.2.10
- Sensor-Surface: 1.4mm (Mechanical Surface Detection)
- Electronics: DAE4 Sn1649; Calibrated: 2021.2.3
- Phantom: SAM Twin Phantom; Type: SAM Twin; Serial: TP-2024
- Measurement SW: DASY52, Version 52.10 (4); SEMCAD X Version 14.6.14 (7483)

Area Scan (31x81x1): Interpolated grid: dx=1.500 mm, dy=1.500 mm

Maximum value of SAR (interpolated) = 0.206 W/kg

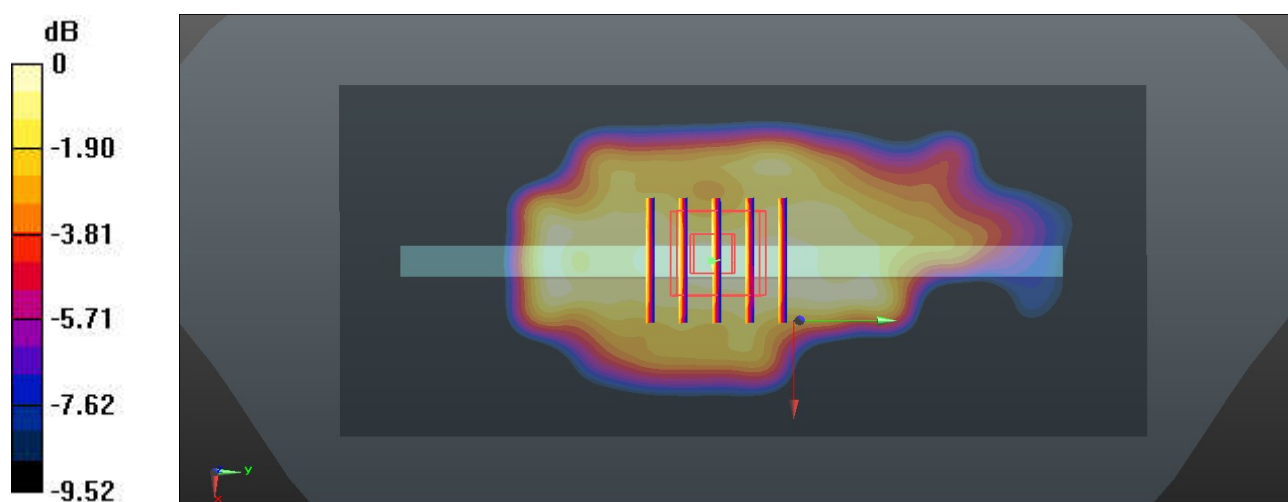
Zoom Scan (5x5x7)/Cube 0: Measurement grid: dx=8mm, dy=8mm, dz=5mm

Reference Value = 15.26 V/m; Power Drift = 0.17 dB

Peak SAR (extrapolated) = 0.282 W/kg

SAR(1 g) = 0.187 W/kg; SAR(10 g) = 0.128 W/kg

Maximum value of SAR (measured) = 0.210 W/kg



0 dB = 0.210 W/kg = -6.78 dBW/kg

12_GSM1900_GPRS (3 Tx slots)_Back_10mm_Ch661

Communication System: UID 0, PCS (0); Frequency: 1880 MHz; Duty Cycle: 1:2.77

Medium: HSL_1900 Medium parameters used: $f = 1880$ MHz; $\sigma = 1.432$ S/m; $\epsilon_r = 40.385$; $\rho = 1000$ kg/m³

Ambient Temperature : 23.3 °C; Liquid Temperature : 22.6 °C

DASY5 Configuration:

- Probe: EX3DV4 - SN7627; ConvF(8.46, 8.46, 8.46); Calibrated: 2021.2.10
- Sensor-Surface: 1.4mm (Mechanical Surface Detection)
- Electronics: DAE4 Sn1649; Calibrated: 2021.2.3
- Phantom: SAM Twin Phantom; Type: SAM Twin; Serial: TP-2024
- Measurement SW: DASY52, Version 52.10 (4); SEMCAD X Version 14.6.14 (7483)

Area Scan (81x71x1): Interpolated grid: dx=1.500 mm, dy=1.500 mm

Maximum value of SAR (interpolated) = 0.197 W/kg

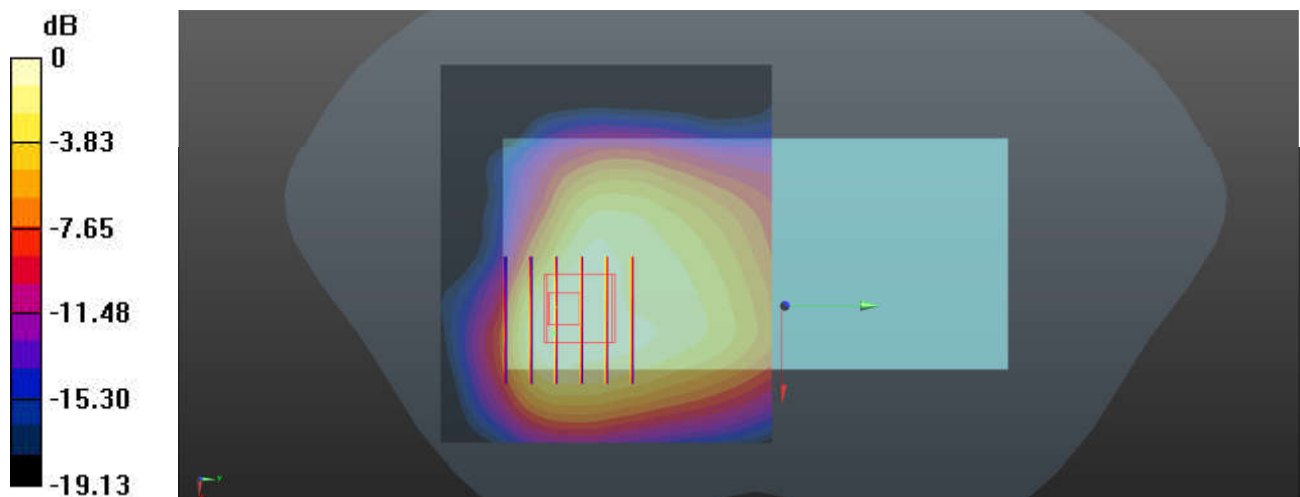
Configuration/Ch/Zoom Scan (6x6x7)/Cube 0: Measurement grid: dx=8mm, dy=8mm, dz=5mm

Reference Value = 5.634 V/m; Power Drift = 0.04 dB

Peak SAR (extrapolated) = 0.269 W/kg

SAR(1 g) = 0.181 W/kg; SAR(10 g) = 0.092 W/kg

Maximum value of SAR (measured) = 0.189 W/kg



0 dB = 0.189 W/kg = -7.24 dBW/kg

13_WCDMA V_RMC 12.2Kbps_Right Side_10mm_Ch4182

Communication System: UID 0, WCDMA (0); Frequency: 836.4 MHz; Duty Cycle: 1:1

Medium: HSL_835 Medium parameters used: $f = 836.4$ MHz; $\sigma = 0.929$ S/m; $\epsilon_r = 42.043$; $\rho = 1000$ kg/m³

Ambient Temperature : 23.2 °C; Liquid Temperature : 22.8 °C

DASY5 Configuration:

- Probe: EX3DV4 - SN7627; ConvF(10.21, 10.21, 10.21); Calibrated: 2021.2.10
- Sensor-Surface: 1.4mm (Mechanical Surface Detection)
- Electronics: DAE4 Sn1649; Calibrated: 2021.2.3
- Phantom: SAM Twin Phantom; Type: SAM Twin; Serial: TP-2024
- Measurement SW: DASY52, Version 52.10 (4); SEMCAD X Version 14.6.14 (7483)

Area Scan (41x81x1): Interpolated grid: dx=1.500 mm, dy=1.500 mm

Maximum value of SAR (interpolated) = 0.334 W/kg

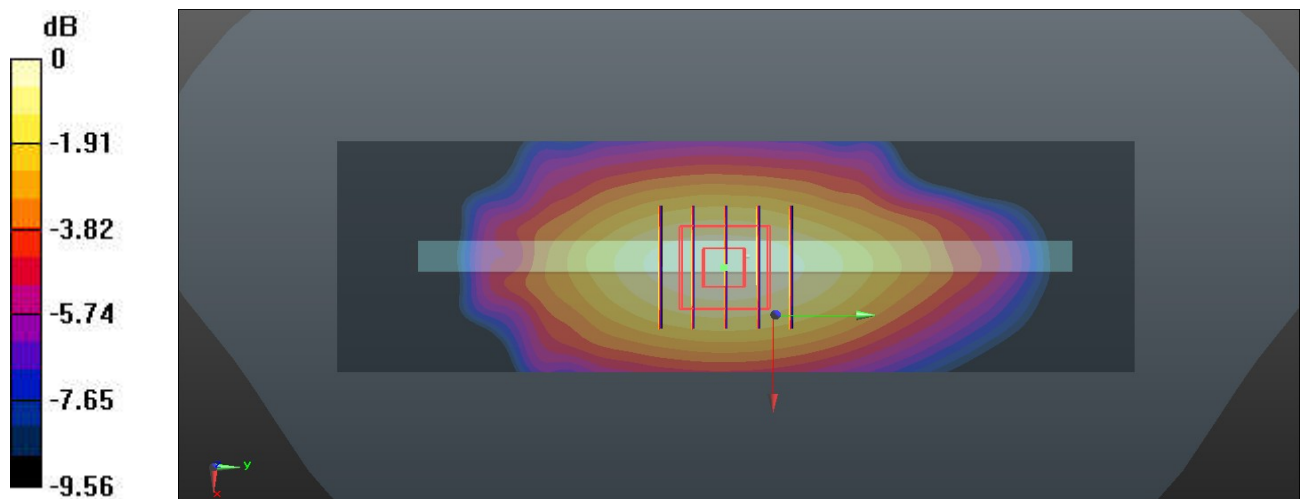
Zoom Scan (5x5x7)/Cube 0: Measurement grid: dx=8mm, dy=8mm, dz=5mm

Reference Value = 19.25 V/m; Power Drift = -0.01 dB

Peak SAR (extrapolated) = 0.414 W/kg

SAR(1 g) = 0.292 W/kg; SAR(10 g) = 0.200 W/kg

Maximum value of SAR (measured) = 0.336 W/kg



0 dB = 0.336 W/kg = -4.74 dBW/kg

14_LTE Band 12_10M_QPSK_1RB_0Offset_Right Side_10mm_Ch23095

Communication System: UID 0, LTE-FDD (0); Frequency: 707.5 MHz; Duty Cycle: 1:1

Medium: HSL_750 Medium parameters used: $f = 707.5$ MHz; $\sigma = 0.881$ S/m; $\epsilon_r = 42.466$; $\rho = 1000$ kg/m³

Ambient Temperature : 23.1 °C; Liquid Temperature : 22.8 °C

DASY5 Configuration:

- Probe: EX3DV4 - SN7627; ConvF(10.47, 10.47, 10.47); Calibrated: 2021.2.10
- Sensor-Surface: 1.4mm (Mechanical Surface Detection)
- Electronics: DAE4 Sn1649; Calibrated: 2021.2.3
- Phantom: SAM Twin Phantom; Type: SAM Twin; Serial: TP-2024
- Measurement SW: DASY52, Version 52.10 (4); SEMCAD X Version 14.6.14 (7483)

Area Scan (31x131x1): Interpolated grid: $dx=1.500$ mm, $dy=1.500$ mm

Maximum value of SAR (interpolated) = 0.248 W/kg

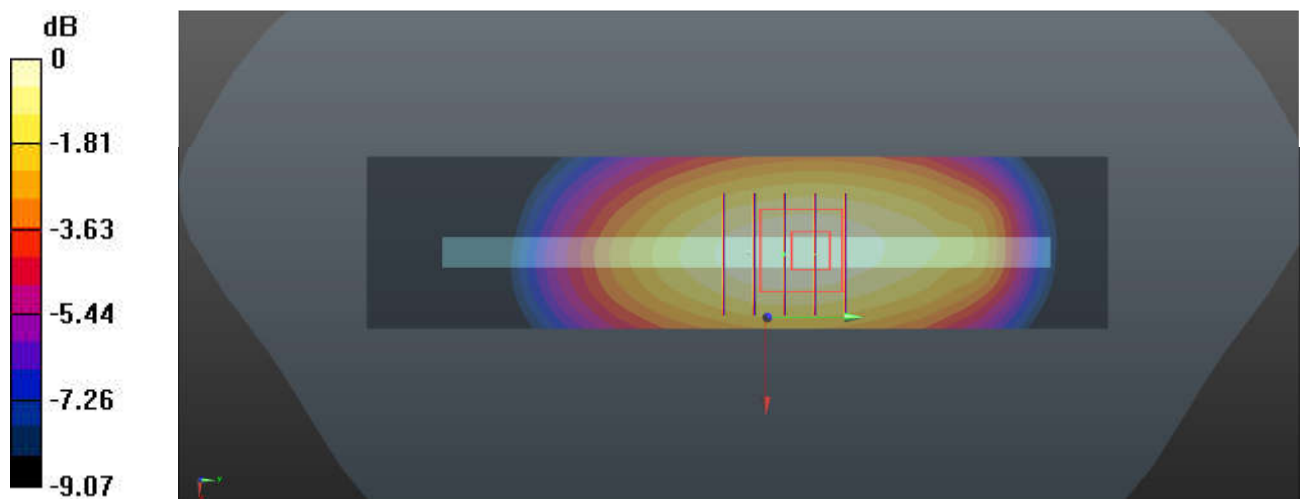
Zoom Scan (5x5x7)/Cube 0: Measurement grid: $dx=8$ mm, $dy=8$ mm, $dz=5$ mm

Reference Value = 16.93 V/m; Power Drift = 0.01 dB

Peak SAR (extrapolated) = 0.302 W/kg

SAR(1 g) = 0.218 W/kg; SAR(10 g) = 0.153 W/kg

Maximum value of SAR (measured) = 0.249 W/kg



0 dB = 0.249 W/kg = -6.04 dBW/kg

15_LTE Band 5_10M_QPSK_1RB_0Offset_Right Side_10mm_Ch20525

Communication System: UID 0, LTE-FDD (0); Frequency: 836.5 MHz; Duty Cycle: 1:1

Medium: HSL_835 Medium parameters used: $f = 836.5$ MHz; $\sigma = 0.929$ S/m; $\epsilon_r = 42.043$; $\rho = 1000$ kg/m³

Ambient Temperature : 23.2 °C; Liquid Temperature : 22.8 °C

DASY5 Configuration:

- Probe: EX3DV4 - SN7627; ConvF(10.21, 10.21, 10.21); Calibrated: 2021.2.10
- Sensor-Surface: 1.4mm (Mechanical Surface Detection)
- Electronics: DAE4 Sn1649; Calibrated: 2021.2.3
- Phantom: SAM Twin Phantom; Type: SAM Twin; Serial: TP-2024
- Measurement SW: DASY52, Version 52.10 (4); SEMCAD X Version 14.6.14 (7483)

Area Scan (31x131x1): Interpolated grid: $dx=1.500$ mm, $dy=1.500$ mm

Maximum value of SAR (interpolated) = 0.330 W/kg

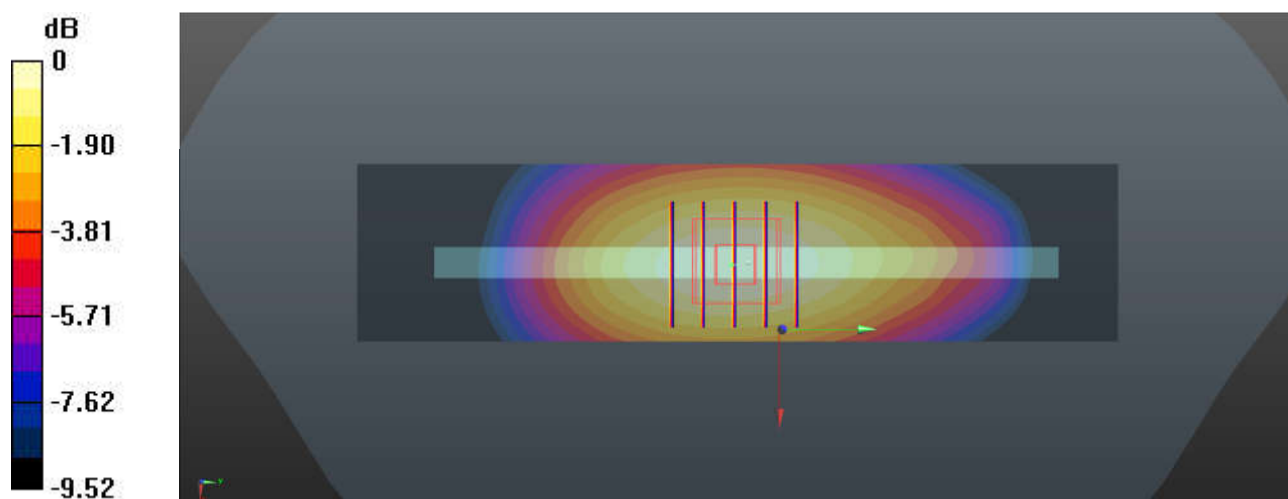
Zoom Scan (5x5x7)/Cube 0: Measurement grid: $dx=8$ mm, $dy=8$ mm, $dz=5$ mm

Reference Value = 19.29 V/m; Power Drift = -0.05 dB

Peak SAR (extrapolated) = 0.405 W/kg

SAR(1 g) = 0.288 W/kg; SAR(10 g) = 0.199 W/kg

Maximum value of SAR (measured) = 0.330 W/kg



0 dB = 0.330 W/kg = -4.81 dBW/kg

16_WLAN2.4GHz_802.11b 1Mbps_Top Side_10mm_Ch6

Communication System: UID 0, WLAN2.4GHz (0); Frequency: 2437 MHz; Duty Cycle: 1:1
Medium: HSL_2450 Medium parameters used: $f = 2437$ MHz; $\sigma = 1.859$ S/m; $\epsilon_r = 40.803$; $\rho = 1000$ kg/m³

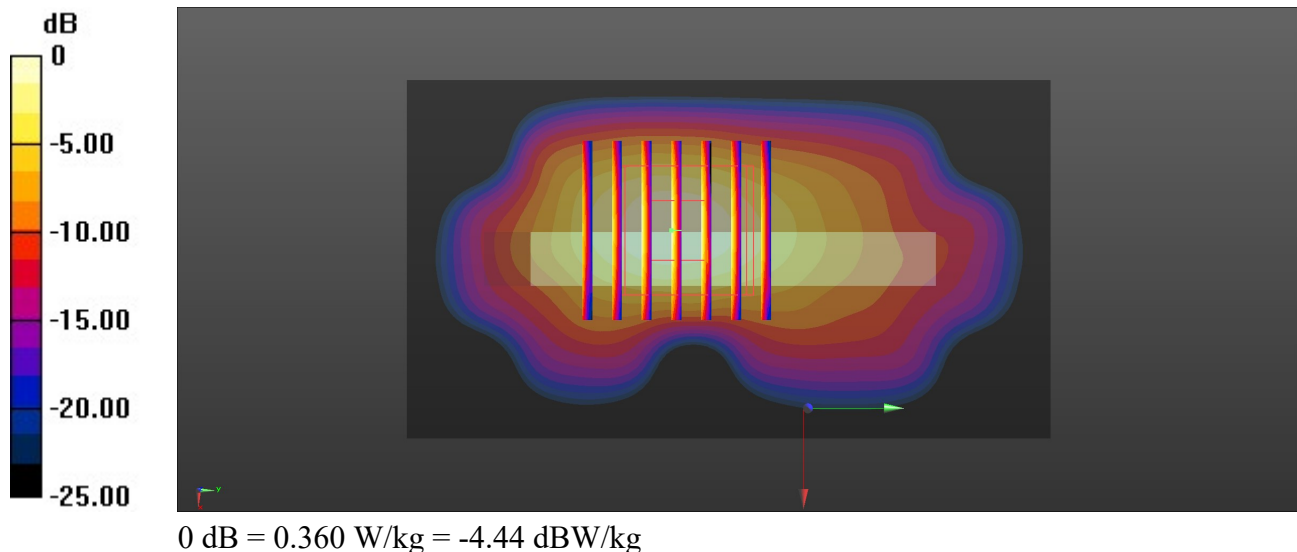
Ambient Temperature : 23.3 °C; Liquid Temperature : 22.9 °C

DASY5 Configuration:

- Probe: EX3DV4 - SN7627; ConvF(8, 8, 8); Calibrated: 2021.2.10
- Sensor-Surface: 1.4mm (Mechanical Surface Detection)
- Electronics: DAE4 Sn1649; Calibrated: 2021.2.3
- Phantom: SAM Twin Phantom; Type: SAM Twin; Serial: TP-2024
- Measurement SW: DASY52, Version 52.10 (4); SEMCAD X Version 14.6.14 (7483)

Area Scan (51x91x1): Interpolated grid: $dx=1.200$ mm, $dy=1.200$ mm
Maximum value of SAR (interpolated) = 0.360 W/kg

Zoom Scan (7x7x7)/Cube 0: Measurement grid: $dx=5$ mm, $dy=5$ mm, $dz=5$ mm
Reference Value = 14.45 V/m; Power Drift = -0.08 dB
Peak SAR (extrapolated) = 0.442 W/kg
SAR(1 g) = 0.213 W/kg; SAR(10 g) = 0.094 W/kg
Maximum value of SAR (measured) = 0.360 W/kg



17_Bluetooth_1Mbps_Top Side_10mm_Ch78

Communication System: UID 0, Bluetooth (0); Frequency: 2480 MHz; Duty Cycle: 1:1.298

Medium: HSL_2450 Medium parameters used: $f = 2480$ MHz; $\sigma = 1.888$ S/m; $\epsilon_r = 40.792$; $\rho = 1000$ kg/m³

Ambient Temperature : 23.3 °C; Liquid Temperature : 22.9 °C

DASY5 Configuration:

- Probe: EX3DV4 - SN7627; ConvF(8, 8, 8); Calibrated: 2021.2.10
- Sensor-Surface: 1.4mm (Mechanical Surface Detection)
- Electronics: DAE4 Sn1649; Calibrated: 2021.2.3
- Phantom: SAM Twin Phantom; Type: SAM Twin; Serial: TP-2024
- Measurement SW: DASY52, Version 52.10 (4); SEMCAD X Version 14.6.14 (7483)

Area Scan (51x91x1): Interpolated grid: dx=1.200 mm, dy=1.200 mm

Maximum value of SAR (interpolated) = 0.0964 W/kg

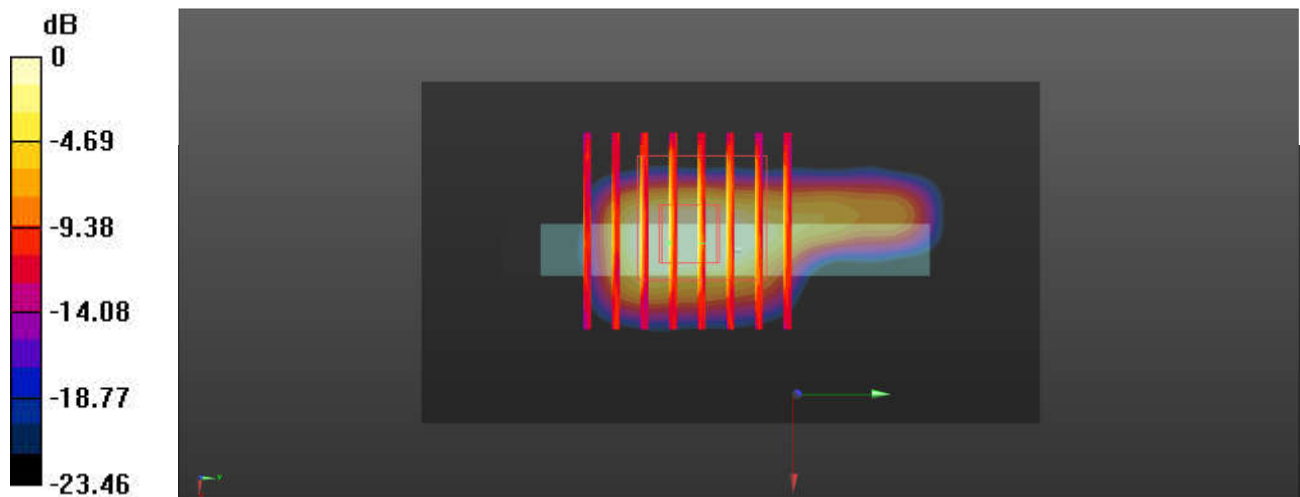
Zoom Scan (8x8x7)/Cube 0: Measurement grid: dx=5mm, dy=5mm, dz=5mm

Reference Value = 2.968 V/m; Power Drift = -0.09 dB

Peak SAR (extrapolated) = 0.101 W/kg

SAR(1 g) = 0.026 W/kg; SAR(10 g) = 0.00947 W/kg

Maximum value of SAR (measured) = 0.0408 W/kg



0 dB = 0.0237 W/kg = -16.25 dBW/kg

18_GSM850_GPRS (4 Tx slots)_Front_15mm_Ch189

Communication System: UID 0, GSM850 (0); Frequency: 836.4 MHz; Duty Cycle: 1:2.08

Medium: HSL_835 Medium parameters used: $f = 836.4$ MHz; $\sigma = 0.929$ S/m; $\epsilon_r = 42.043$; $\rho = 1000$ kg/m³

Ambient Temperature : 23.2 °C; Liquid Temperature : 22.8 °C

DASY5 Configuration:

- Probe: EX3DV4 - SN7627; ConvF(10.21, 10.21, 10.21); Calibrated: 2021.2.10
- Sensor-Surface: 1.4mm (Mechanical Surface Detection)
- Electronics: DAE4 Sn1649; Calibrated: 2021.2.3
- Phantom: SAM Twin Phantom; Type: SAM Twin; Serial: TP-2024
- Measurement SW: DASY52, Version 52.10 (4); SEMCAD X Version 14.6.14 (7483)

Area Scan (81x81x1): Interpolated grid: dx=1.500 mm, dy=1.500 mm

Maximum value of SAR (interpolated) = 0.170 W/kg

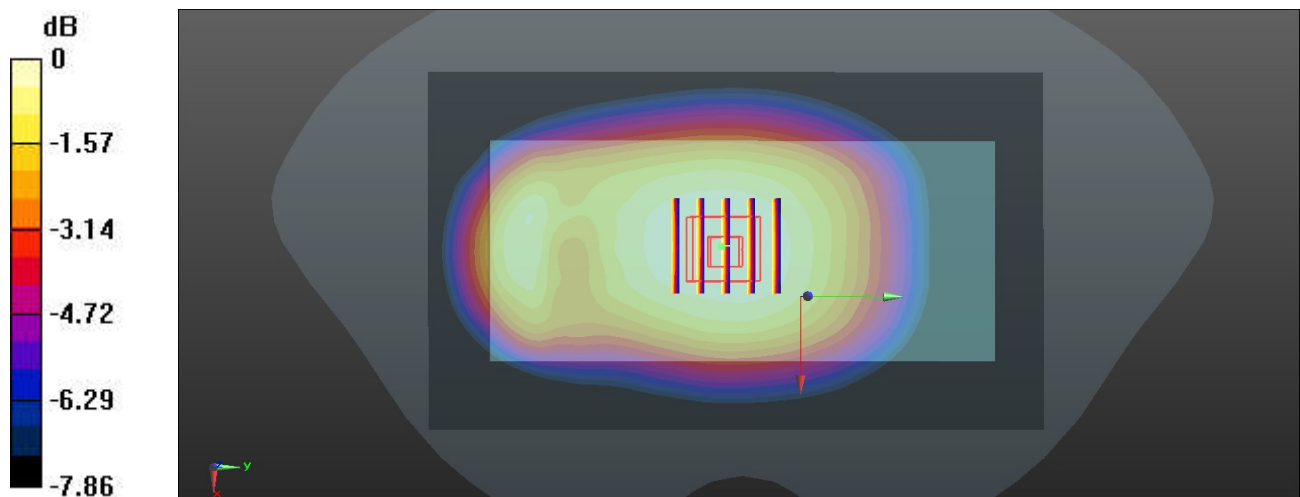
Zoom Scan (5x5x7)/Cube 0: Measurement grid: dx=8mm, dy=8mm, dz=5mm

Reference Value = 13.79 V/m; Power Drift = -0.09 dB

Peak SAR (extrapolated) = 0.189 W/kg

SAR(1 g) = 0.158 W/kg; SAR(10 g) = 0.115 W/kg

Maximum value of SAR (measured) = 0.167 W/kg



0 dB = 0.167 W/kg = -7.77 dBW/kg

19_GSM1900_GPRS (3 Tx slots)_Back_15mm_Ch661

Communication System: UID 0, PCS (0); Frequency: 1880 MHz; Duty Cycle: 1:2.77

Medium: HSL_1900 Medium parameters used: $f = 1880$ MHz; $\sigma = 1.432$ S/m; $\epsilon_r = 40.385$; $\rho = 1000$ kg/m³

Ambient Temperature : 23.3 °C; Liquid Temperature : 22.6 °C

DASY5 Configuration:

- Probe: EX3DV4 - SN7627; ConvF(8.46, 8.46, 8.46); Calibrated: 2021.2.10
- Sensor-Surface: 1.4mm (Mechanical Surface Detection)
- Electronics: DAE4 Sn1649; Calibrated: 2021.2.3
- Phantom: SAM Twin Phantom; Type: SAM Twin; Serial: TP-2024
- Measurement SW: DASY52, Version 52.10 (4); SEMCAD X Version 14.6.14 (7483)

Area Scan (81x141x1): Interpolated grid: $dx=1.500$ mm, $dy=1.500$ mm

Maximum value of SAR (interpolated) = 0.118 W/kg

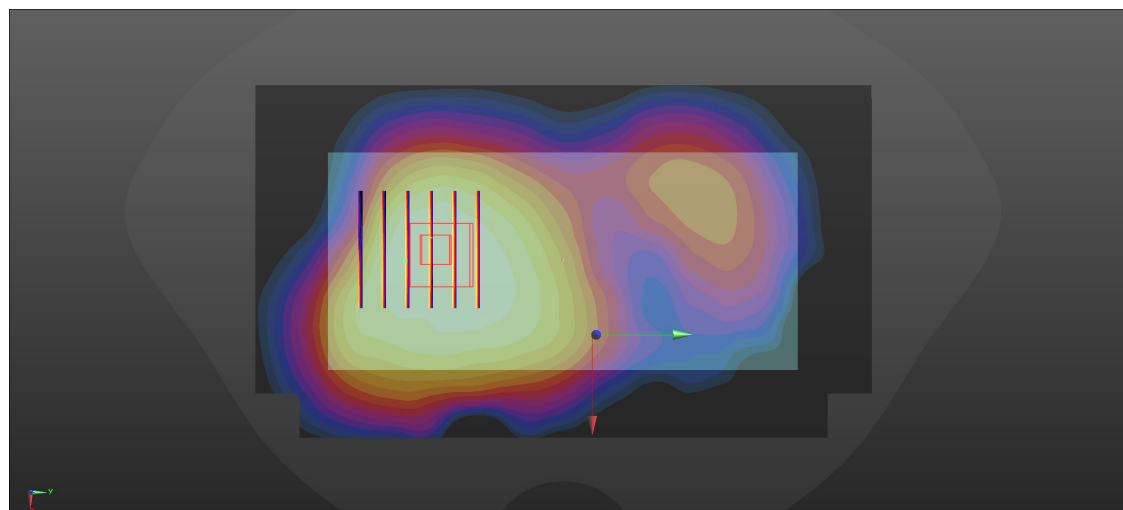
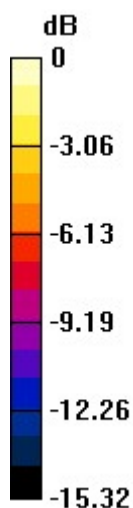
Zoom Scan (6x6x7)/Cube 0: Measurement grid: $dx=8$ mm, $dy=8$ mm, $dz=5$ mm

Reference Value = 5.583 V/m; Power Drift = 0.04 dB

Peak SAR (extrapolated) = 0.157 W/kg

SAR(1 g) = 0.100 W/kg; SAR(10 g) = 0.067 W/kg

Maximum value of SAR (measured) = 0.116 W/kg



0 dB = 0.116 W/kg = -9.36 dBW/kg

20_WCDMA V_RMC 12.2Kbps_Front_15mm_Ch4182

Communication System: UID 0, WCDMA (0); Frequency: 836.4 MHz; Duty Cycle: 1:1
Medium: HSL_835 Medium parameters used: $f = 836.4$ MHz; $\sigma = 0.929$ S/m; $\epsilon_r = 42.043$; $\rho = 1000$ kg/m³

Ambient Temperature : 23.2 °C; Liquid Temperature : 22.8 °C

DASY5 Configuration:

- Probe: EX3DV4 - SN7627; ConvF(10.21, 10.21, 10.21); Calibrated: 2021.2.10
- Sensor-Surface: 1.4mm (Mechanical Surface Detection)
- Electronics: DAE4 Sn1649; Calibrated: 2021.2.3
- Phantom: SAM Twin Phantom; Type: SAM Twin; Serial: TP-2024
- Measurement SW: DASY52, Version 52.10 (4); SEMCAD X Version 14.6.14 (7483)

Area Scan (81x81x1): Interpolated grid: dx=1.500 mm, dy=1.500 mm

Maximum value of SAR (interpolated) = 0.253 W/kg

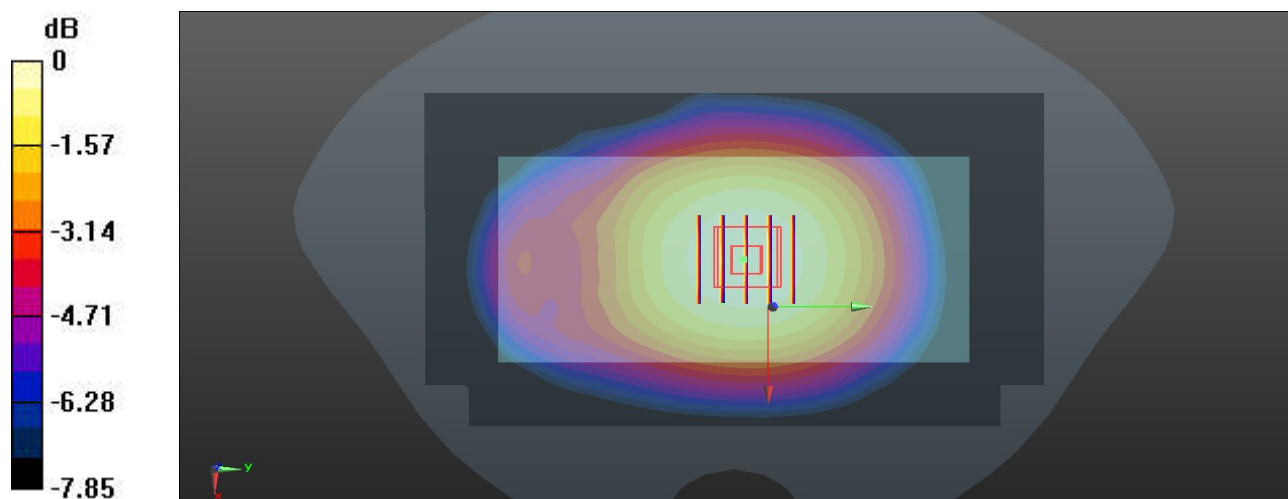
Zoom Scan (5x5x7)/Cube 0: Measurement grid: dx=8mm, dy=8mm, dz=5mm

Reference Value = 16.85 V/m; Power Drift = 0.01 dB

Peak SAR (extrapolated) = 0.289 W/kg

SAR(1 g) = 0.230 W/kg; SAR(10 g) = 0.175 W/kg

Maximum value of SAR (measured) = 0.253 W/kg



0 dB = 0.253 W/kg = -5.97 dBW/kg

21_LTE Band 12_10M_QPSK_1RB_0Offset_Back_15mm_Ch23095

Communication System: UID 0, LTE-FDD (0); Frequency: 707.5 MHz; Duty Cycle: 1:1

Medium: HSL_750 Medium parameters used: $f = 707.5$ MHz; $\sigma = 0.881$ S/m; $\epsilon_r = 42.466$; $\rho = 1000$ kg/m³

Ambient Temperature : 23.1 °C; Liquid Temperature : 22.8 °C

DASY5 Configuration:

- Probe: EX3DV4 - SN7627; ConvF(10.47, 10.47, 10.47); Calibrated: 2021.2.10
- Sensor-Surface: 1.4mm (Mechanical Surface Detection)
- Electronics: DAE4 Sn1649; Calibrated: 2021.2.3
- Phantom: SAM Twin Phantom; Type: SAM Twin; Serial: TP-2024
- Measurement SW: DASY52, Version 52.10 (4); SEMCAD X Version 14.6.14 (7483)

Area Scan (81x71x1): Interpolated grid: dx=1.500 mm, dy=1.500 mm

Maximum value of SAR (interpolated) = 0.217 W/kg

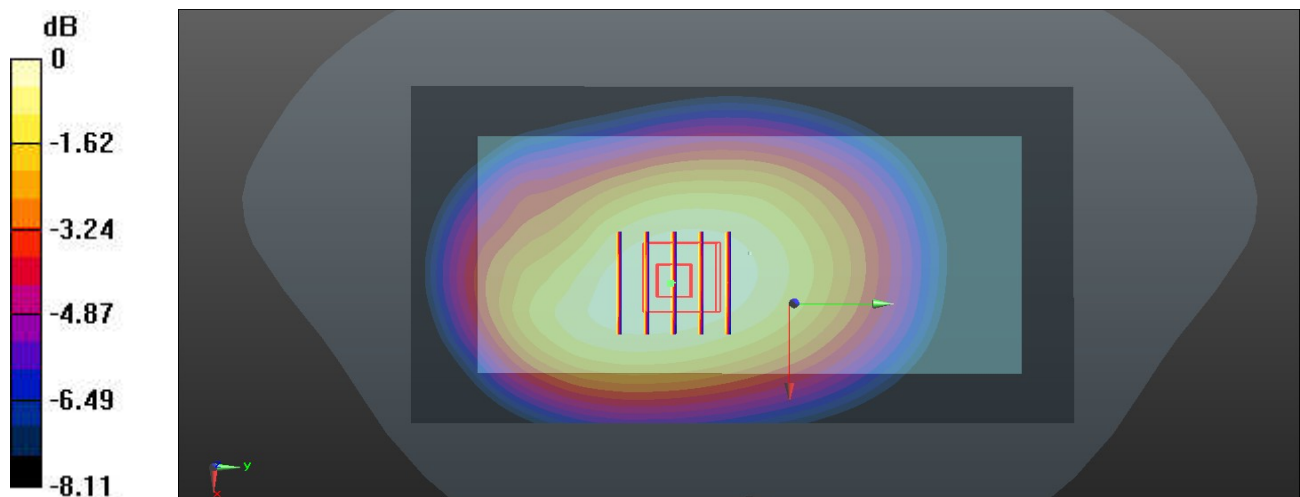
Zoom Scan (5x5x7)/Cube 0: Measurement grid: dx=8mm, dy=8mm, dz=5mm

Reference Value = 15.30 V/m; Power Drift = 0.01 dB

Peak SAR (extrapolated) = 0.243 W/kg

SAR(1 g) = 0.194 W/kg; SAR(10 g) = 0.148 W/kg

Maximum value of SAR (measured) = 0.213 W/kg



0 dB = 0.213 W/kg = -6.72 dBW/kg