

## 20150421\_System Check\_Dipole2450 sn728

Frequency: 2450 MHz; Duty Cycle: 1:1; Room Ambient Temperature: 24.0°C; Liquid Temperature: 23.0°C

Medium parameters used (interpolated):  $f = 2450$  MHz;  $\sigma = 1.97$  mho/m;  $\epsilon_r = 53.9$ ;  $\rho = 1000$  kg/m<sup>3</sup> ;

DASY4 Configuration:

- Area Scan setting - Find Secondary Maximum Within: 2.0 dB and with a peak SAR value greater than 0.0012W/kg
- Electronics: DAE4 Sn558; Calibrated: 7/22/2014
- Probe: EX3DV4 - SN3554; ConvF(6.15, 6.15, 6.15); Calibrated: 9/24/2014
- Sensor-Surface: 2mm (Mechanical Surface Detection)
- Phantom: Flat Phantom ELI4.0; Type: QDOVA001BA; Serial: SN: 1052

**Body/Pin=100mW, d=10mm/Area Scan (8x9x1):** Measurement grid: dx=15mm, dy=15mm

[Info: Interpolated medium parameters used for SAR evaluation.](#)

Maximum value of SAR (measured) = 6.02 mW/g

**Body/Pin=100mW, d=10mm/Zoom Scan (7x7x7)/Cube 0:** Measurement grid: dx=5mm, dy=5mm, dz=5mm

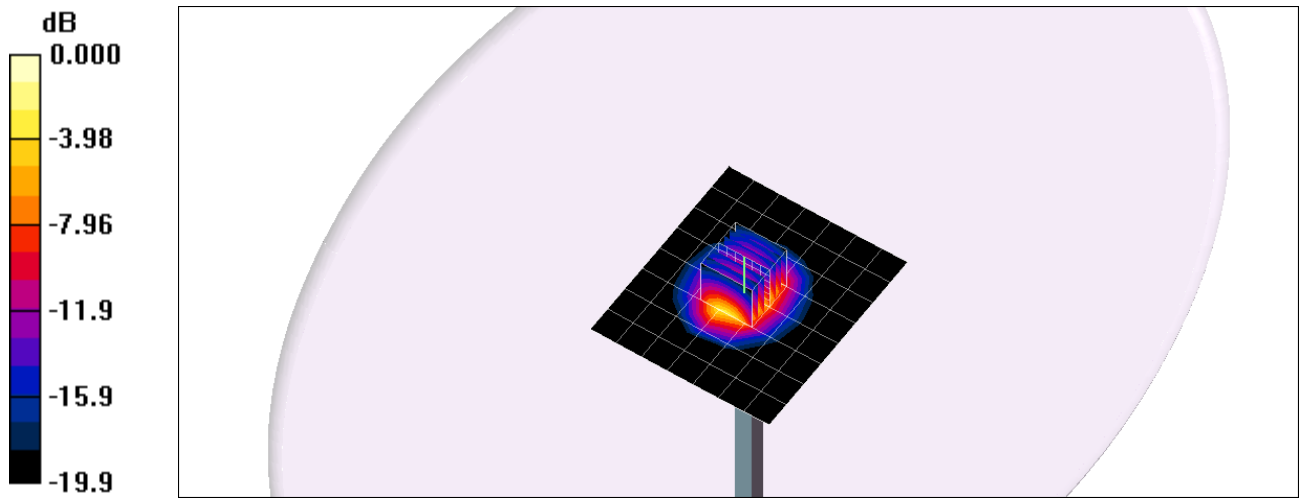
Reference Value = 58.5 V/m; Power Drift = -0.009 dB

Peak SAR (extrapolated) = 9.68 W/kg

**SAR(1 g) = 4.86 mW/g; SAR(10 g) = 2.34 mW/g**

[Info: Interpolated medium parameters used for SAR evaluation.](#)

Maximum value of SAR (measured) = 7.29 mW/g



0 dB = 7.29mW/g

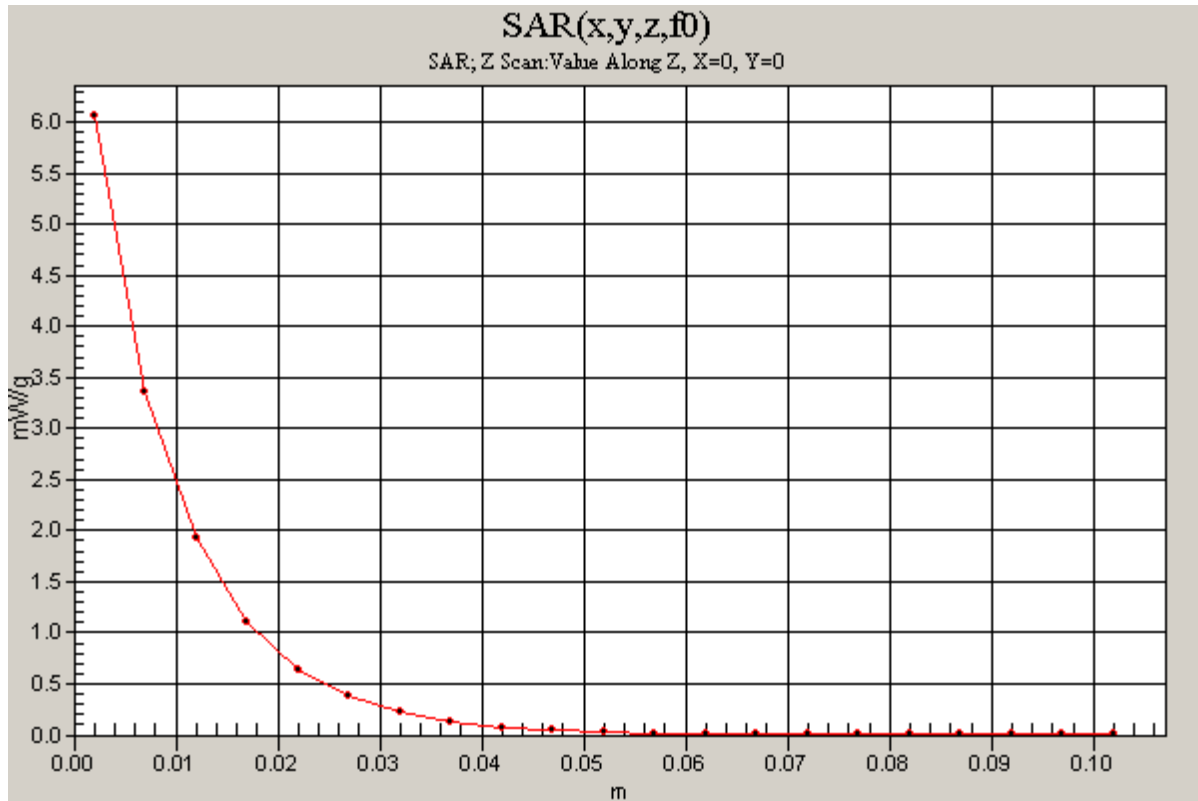
### 20150421\_System Check\_Dipole2450 sn728

Frequency: 2450 MHz; Duty Cycle: 1:1

**Body/Pin=100mW, d=10mm/Z Scan (1x1x21):** Measurement grid: dx=20mm, dy=20mm, dz=5mm

Info: [Interpolated medium parameters used for SAR evaluation.](#)

Maximum value of SAR (measured) = 6.06 mW/g



## 20150422\_System check\_Diple5GHzv2 SN1004

Frequency: 5200 MHz; Duty Cycle: 1:1; Room Ambient Temperature: 25.0°C; Liquid Temperature: 24.0°C

Medium parameters used (interpolated):  $f = 5200$  MHz;  $\sigma = 5.1$  mho/m;  $\epsilon_r = 48.8$ ;  $\rho = 1000$  kg/m<sup>3</sup> ;

DASY4 Configuration:

- Area Scan setting - Find Secondary Maximum Within: 2.0 dB and with a peak SAR value greater than 0.0012W/kg
- Electronics: DAE4 Sn558; Calibrated: 7/22/2014
- Probe: EX3DV4 - SN3554; ConvF(4.02, 4.02, 4.02); Calibrated: 9/24/2014
- Sensor-Surface: 2.5mm (Mechanical Surface Detection)
- Phantom: Flat Phantom ELI4.0; Type: QDOVA001BA; Serial: SN: 1052

**Body/5200MHz,Pin=100mW,d= 2/Area Scan (7x7x1):** Measurement grid: dx=10mm, dy=10mm

[Info: Interpolated medium parameters used for SAR evaluation.](#)

Maximum value of SAR (measured) = 18.9 mW/g

**Body/5200MHz,Pin=100mW,d= 2/Zoom Scan (8x8x9)/Cube 0:** Measurement grid: dx=4mm, dy=4mm, dz=2.5mm

Reference Value = 64.3 V/m; Power Drift = -0.091 dB

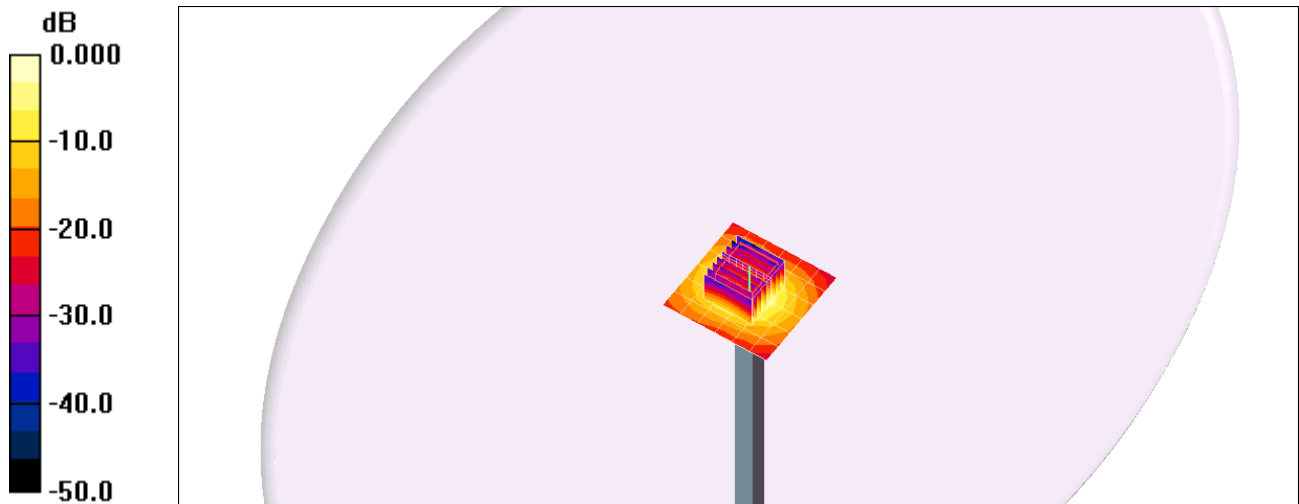
Peak SAR (extrapolated) = 28.1 W/kg

Peak SAR (extrapolated) = 28.1 W/kg

**SAR(1 g) = 7.1 mW/g; SAR(10 g) = 2.07 mW/g**

[Info: Interpolated medium parameters used for SAR evaluation.](#)

Maximum value of SAR (measured) = 12.1 mW/g



0 dB = 12.1mW/g

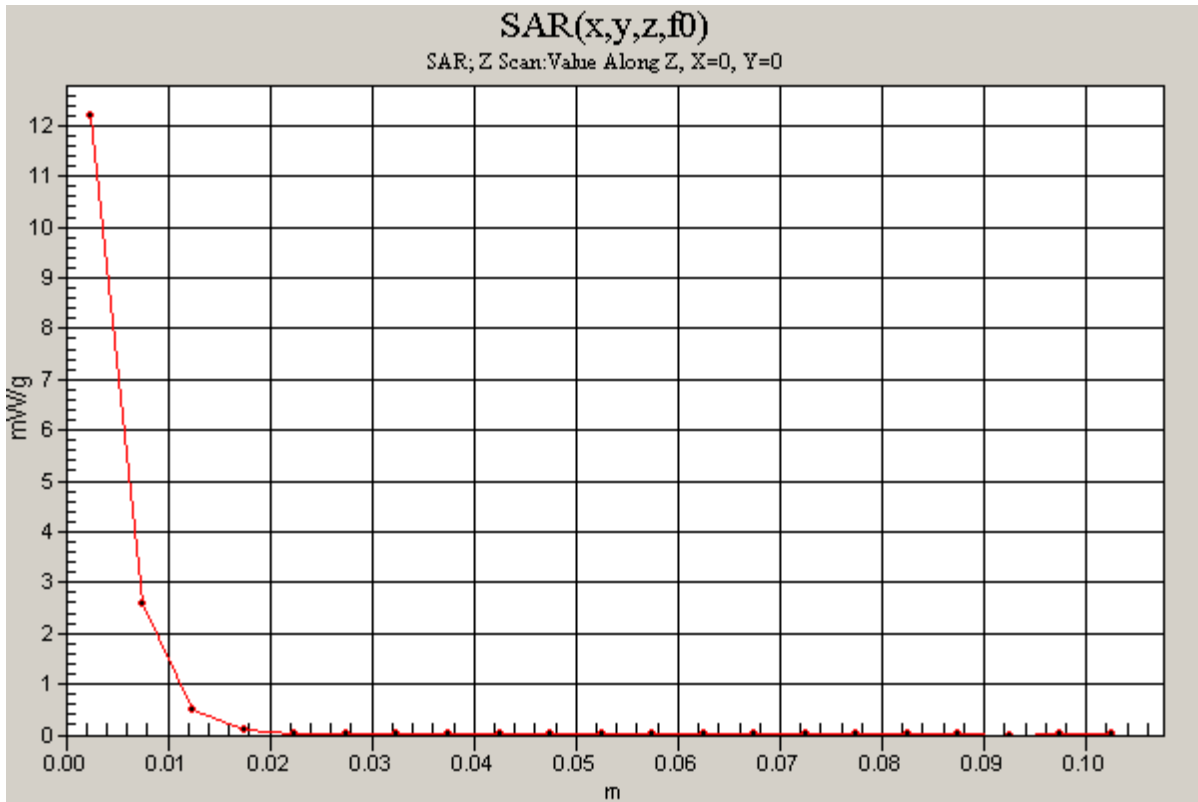
### 20150422\_System check\_Diple5GHzv2 SN1004

Frequency: 5200 MHz; Duty Cycle: 1:1

**Body/5200MHz,Pin=100mW,d= 2/Z Scan (1x1x21):** Measurement grid: dx=20mm, dy=20mm, dz=5mm

Info: [Interpolated medium parameters used for SAR evaluation.](#)

Maximum value of SAR (measured) = 12.2 mW/g



## 20150422\_System check\_Diple5GHzv2 SN1004

Frequency: 5300 MHz; Duty Cycle: 1:1; Room Ambient Temperature: 25.0°C; Liquid Temperature: 24.0°C

Medium parameters used:  $f = 5300.2$  MHz;  $\sigma = 5.22$  mho/m;  $\epsilon_r = 48.6$ ;  $\rho = 1000$  kg/m<sup>3</sup> ;

DASY4 Configuration:

- Area Scan setting - Find Secondary Maximum Within: 2.0 dB and with a peak SAR value greater than 0.0012W/kg
- Electronics: DAE4 Sn558; Calibrated: 7/22/2014
- Probe: EX3DV4 - SN3554; ConvF(3.84, 3.84, 3.84); Calibrated: 9/24/2014
- Sensor-Surface: 2.5mm (Mechanical Surface Detection)
- Phantom: Flat Phantom ELI4.0; Type: QDOVA001BA; Serial: SN: 1052

**Body/5300MHz,Pin=100mW,d= 2/Area Scan (7x7x1):** Measurement grid: dx=10mm, dy=10mm

Maximum value of SAR (measured) = 13.7 mW/g

**Body/5300MHz,Pin=100mW,d= 2/Zoom Scan (8x8x9)/Cube 0:** Measurement grid: dx=4mm, dy=4mm, dz=2.5mm

Reference Value = 53.9 V/m; Power Drift = -0.007 dB

Peak SAR (extrapolated) = 32.3 W/kg

**SAR(1 g) = 7.77 mW/g; SAR(10 g) = 2.18 mW/g**

Maximum value of SAR (measured) = 12.9 mW/g

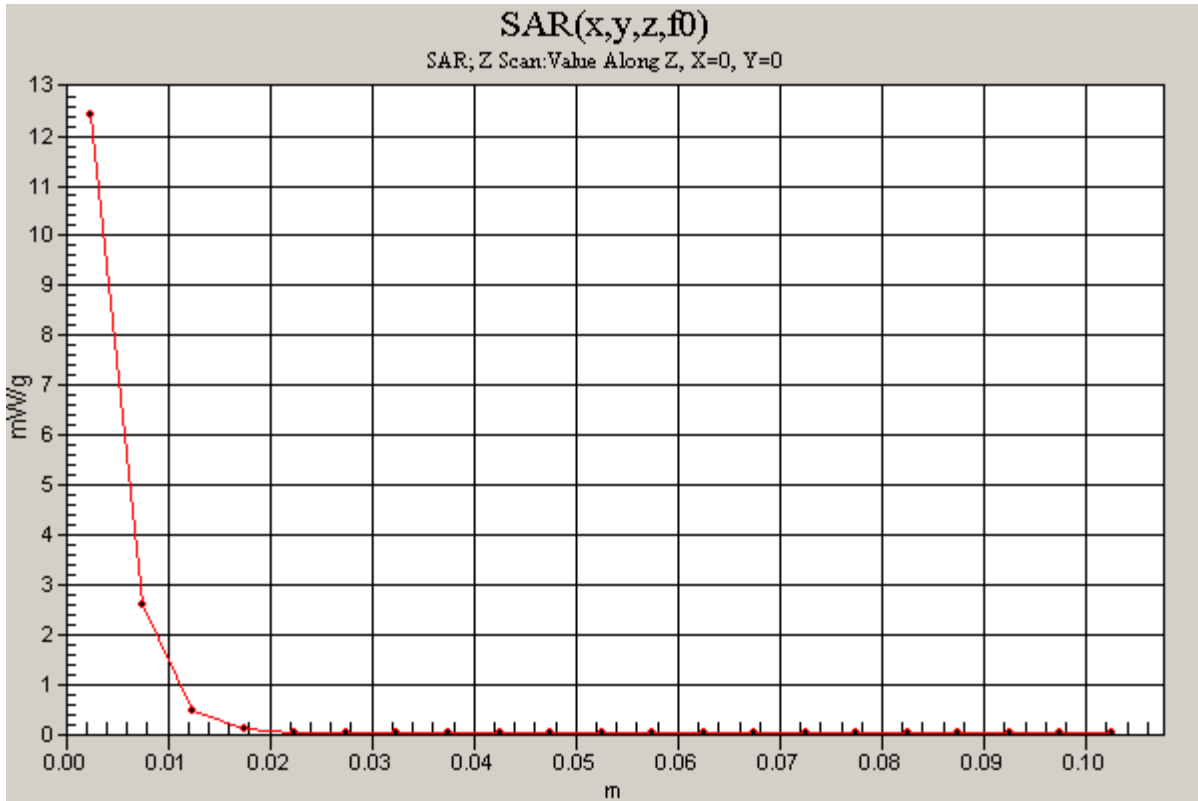


0 dB = 12.9mW/g

### 20150422\_System check\_Diple5GHzv2 SN1004

Frequency: 5300 MHz; Duty Cycle: 1:1

**Body/5300MHz,Pin=100mW,d= 2/Z Scan (1x1x21):** Measurement grid: dx=20mm, dy=20mm, dz=5mm  
Maximum value of SAR (measured) = 12.4 mW/g



## 20150422\_System check\_Diple5GHzv2 SN1004

Frequency: 5600 MHz; Duty Cycle: 1:1; Room Ambient Temperature: 25.0°C; Liquid Temperature: 24.0°C

Medium parameters used:  $f = 5600.5$  MHz;  $\sigma = 5.59$  mho/m;  $\epsilon_r = 48.1$ ;  $\rho = 1000$  kg/m<sup>3</sup> ;

DASY4 Configuration:

- Area Scan setting - Find Secondary Maximum Within: 2.0 dB and with a peak SAR value greater than 0.0012W/kg
- Electronics: DAE4 Sn558; Calibrated: 7/22/2014
- Probe: EX3DV4 - SN3554; ConvF(3.42, 3.42, 3.42); Calibrated: 9/24/2014
- Sensor-Surface: 2.5mm (Mechanical Surface Detection (Locations From Previous Scan Used))Sensor-Surface: 2.5mm (Mechanical Surface Detection)
- Phantom: Flat Phantom ELI4.0; Type: QDOVA001BA; Serial: SN: 1052

**Body/5600MHz,Pin=100mW,d= 2/Area Scan (7x7x1):** Measurement grid: dx=10mm, dy=10mm

Maximum value of SAR (measured) = 11.8 mW/g

**Body/5600MHz,Pin=100mW,d= 2/Zoom Scan (8x8x9)/Cube 0:** Measurement grid: dx=4mm,

dy=4mm, dz=2.5mm

Reference Value = 50.2 V/m; Power Drift = 0.046 dB

Peak SAR (extrapolated) = 34.0 W/kg

**SAR(1 g) = 8.03 mW/g; SAR(10 g) = 2.25 mW/g**

Maximum value of SAR (measured) = 13.4 mW/g

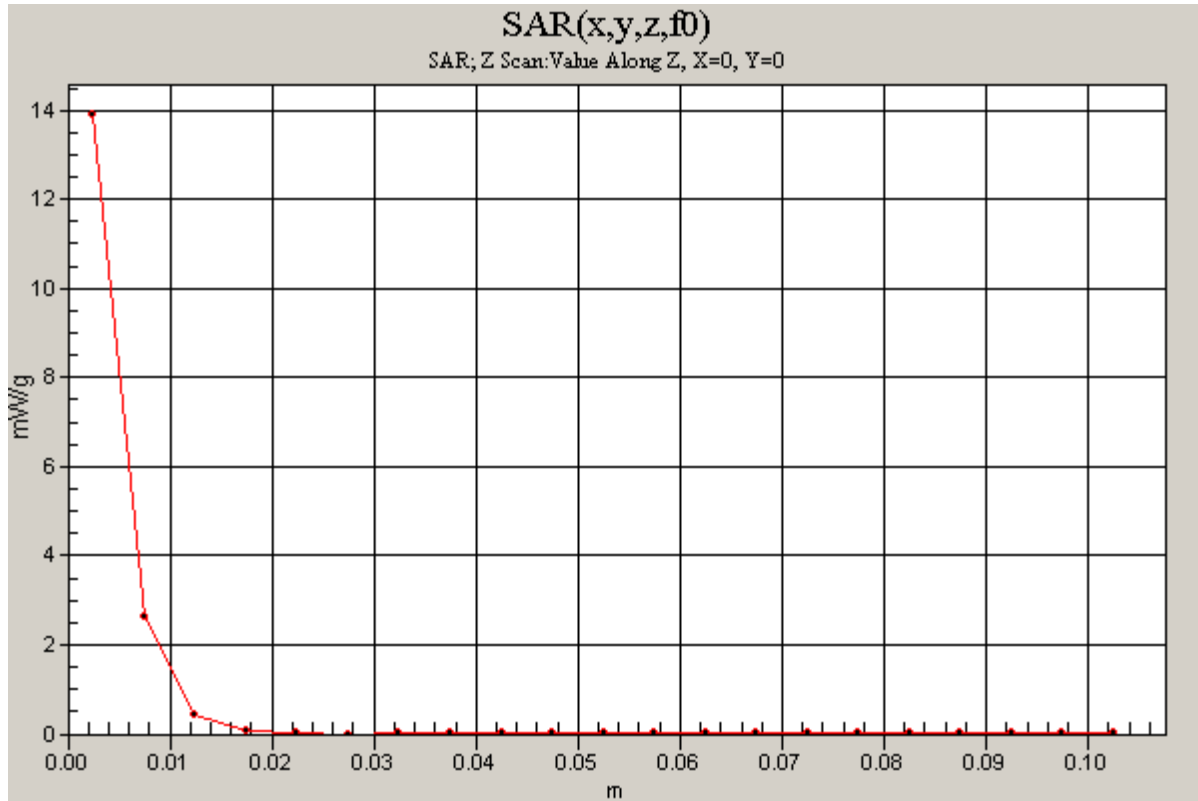


0 dB = 13.4mW/g

### 20150422\_System check\_Diple5GHzv2 SN1004

Frequency: 5600 MHz; Duty Cycle: 1:1

**Body/5600MHz,Pin=100mW,d= 2/Z Scan (1x1x21):** Measurement grid: dx=20mm, dy=20mm, dz=5mm  
Maximum value of SAR (measured) = 13.9 mW/g





## 20150422\_System check\_Diple5GHzv2 SN1004

Frequency: 5800 MHz; Duty Cycle: 1:1; Room Ambient Temperature: 25.0°C; Liquid Temperature: 24.0°C

Medium parameters used (interpolated):  $f = 5800$  MHz;  $\sigma = 5.84$  mho/m;  $\epsilon_r = 47.8$ ;  $\rho = 1000$  kg/m<sup>3</sup> ;

DASY4 Configuration:

- Area Scan setting - Find Secondary Maximum Within: 2.0 dB and with a peak SAR value greater than 0.0012W/kg
- Electronics: DAE4 Sn558; Calibrated: 7/22/2014
- Probe: EX3DV4 - SN3554; ConvF(3.57, 3.57, 3.57); Calibrated: 9/24/2014
- Sensor-Surface: 2.5mm (Mechanical Surface Detection)
- Phantom: Flat Phantom ELI4.0; Type: QDOVA001BA; Serial: SN: 1052

**Body/5800MHz,Pin=100mW,d= 2/Area Scan (7x7x1):** Measurement grid: dx=10mm, dy=10mm

[Info: Interpolated medium parameters used for SAR evaluation.](#)

Maximum value of SAR (measured) = 13.3 mW/g

**Body/5800MHz,Pin=100mW,d= 2/Zoom Scan (8x8x9)/Cube 0:** Measurement grid: dx=4mm, dy=4mm, dz=2.5mm

Reference Value = 51.1 V/m; Power Drift = 0.019 dB

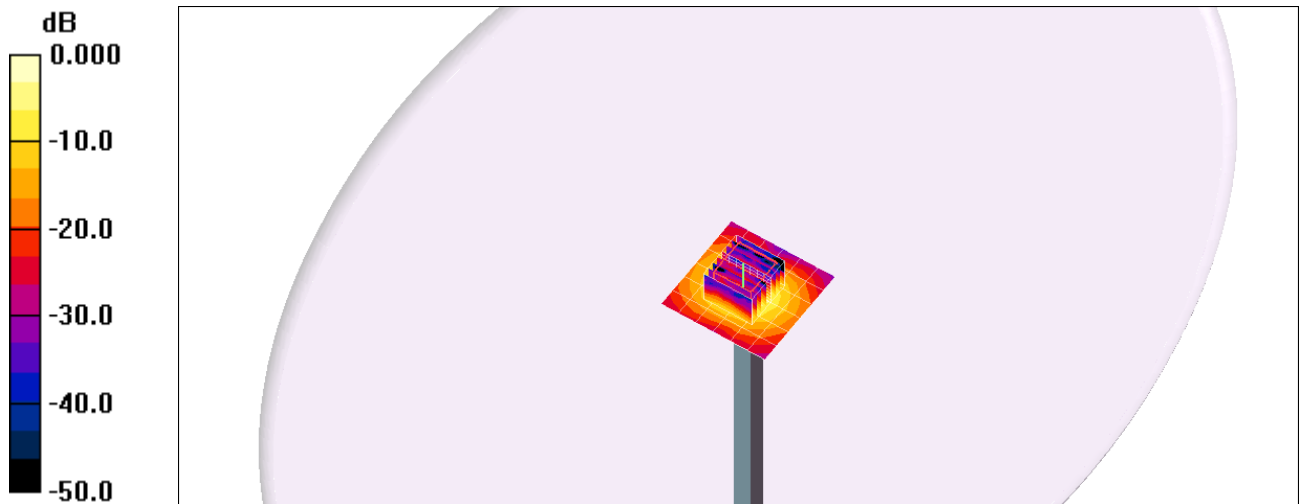
Peak SAR (extrapolated) = 31.4 W/kg

Peak SAR (extrapolated) = 31.4 W/kg

**SAR(1 g) = 7.43 mW/g; SAR(10 g) = 2.12 mW/g**

[Info: Interpolated medium parameters used for SAR evaluation.](#)

Maximum value of SAR (measured) = 12.8 mW/g



0 dB = 12.8mW/g

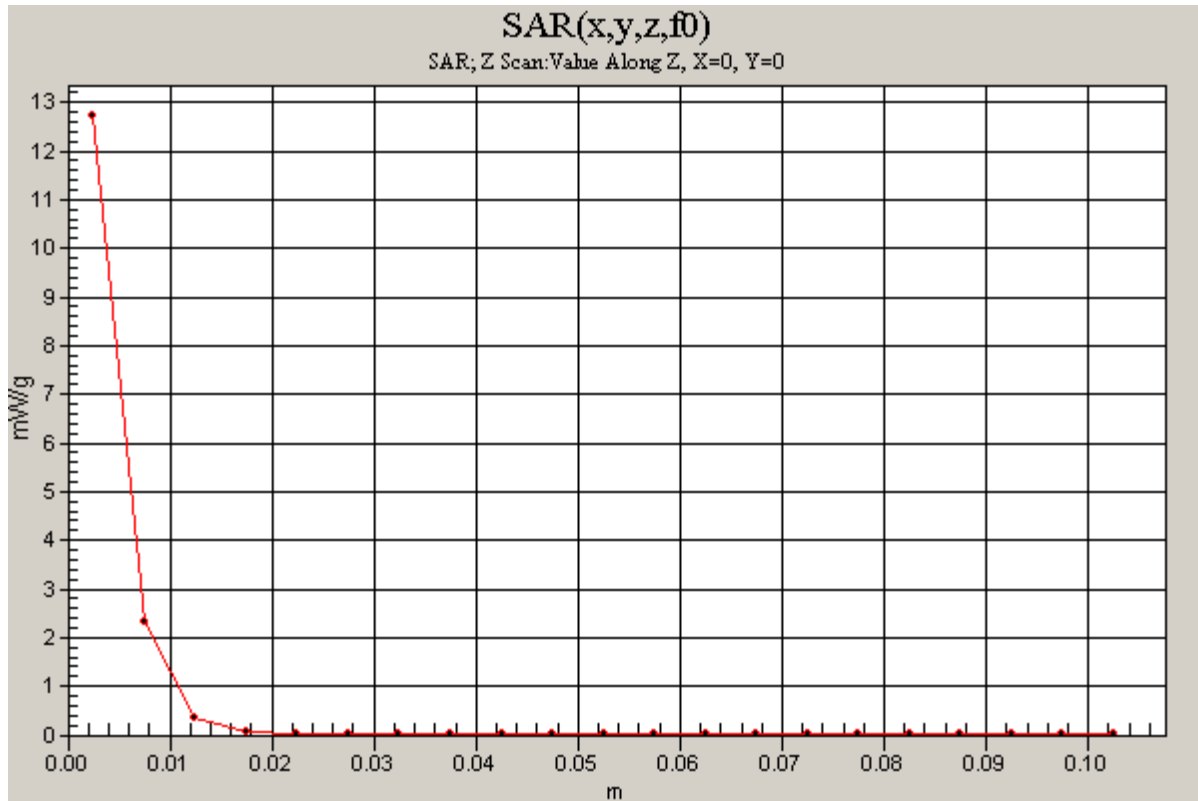
## 20150422\_System check\_Diple5GHzv2 SN1004

Frequency: 5800 MHz; Duty Cycle: 1:1

**Body/5800MHz,Pin=100mW,d= 2/Z Scan (1x1x21):** Measurement grid: dx=20mm, dy=20mm, dz=5mm

Info: [Interpolated medium parameters used for SAR evaluation.](#)

Maximum value of SAR (measured) = 12.7 mW/g



**20150423\_System check\_Diple5GHzv2 SN1004**

Frequency: 5200 MHz; Duty Cycle: 1:1; Room Ambient Temperature: 25.0°C; Liquid Temperature: 24.0°C

Medium parameters used (interpolated):  $f = 5200$  MHz;  $\sigma = 5.41$  mho/m;  $\epsilon_r = 49.4$ ;  $\rho = 1000$  kg/m<sup>3</sup>;

DASY4 Configuration:

- Area Scan setting - Find Secondary Maximum Within: 2.0 dB and with a peak SAR value greater than 0.0012W/kg
- Electronics: DAE4 Sn558; Calibrated: 7/22/2014
- Probe: EX3DV4 - SN3554; ConvF(4.02, 4.02, 4.02); Calibrated: 9/24/2014
- Sensor-Surface: 2.5mm (Mechanical Surface Detection)
- Phantom: Flat Phantom ELI4.0; Type: QDOVA001BA; Serial: SN: 1052

**Body/5200MHz,Pin=100mW,d= 2/Area Scan (7x7x1):** Measurement grid: dx=10mm, dy=10mm

[Info: Interpolated medium parameters used for SAR evaluation.](#)

Maximum value of SAR (measured) = 16.0 mW/g

**Body/5200MHz,Pin=100mW,d= 2/Zoom Scan (8x8x9)/Cube 0:** Measurement grid: dx=4mm,

dy=4mm, dz=2.5mm

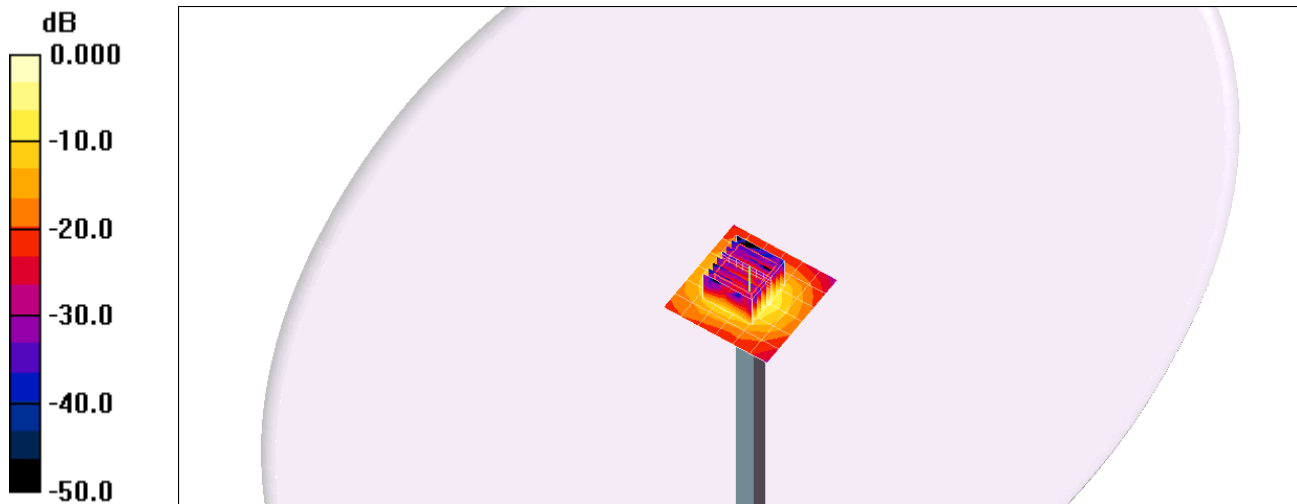
Reference Value = 57.5 V/m; Power Drift = -0.041 dB

Peak SAR (extrapolated) = 32.1 W/kg

**SAR(1 g) = 7.52 mW/g; SAR(10 g) = 2.1 mW/g**

[Info: Interpolated medium parameters used for SAR evaluation.](#)

Maximum value of SAR (measured) = 13.0 mW/g



0 dB = 13.0mW/g

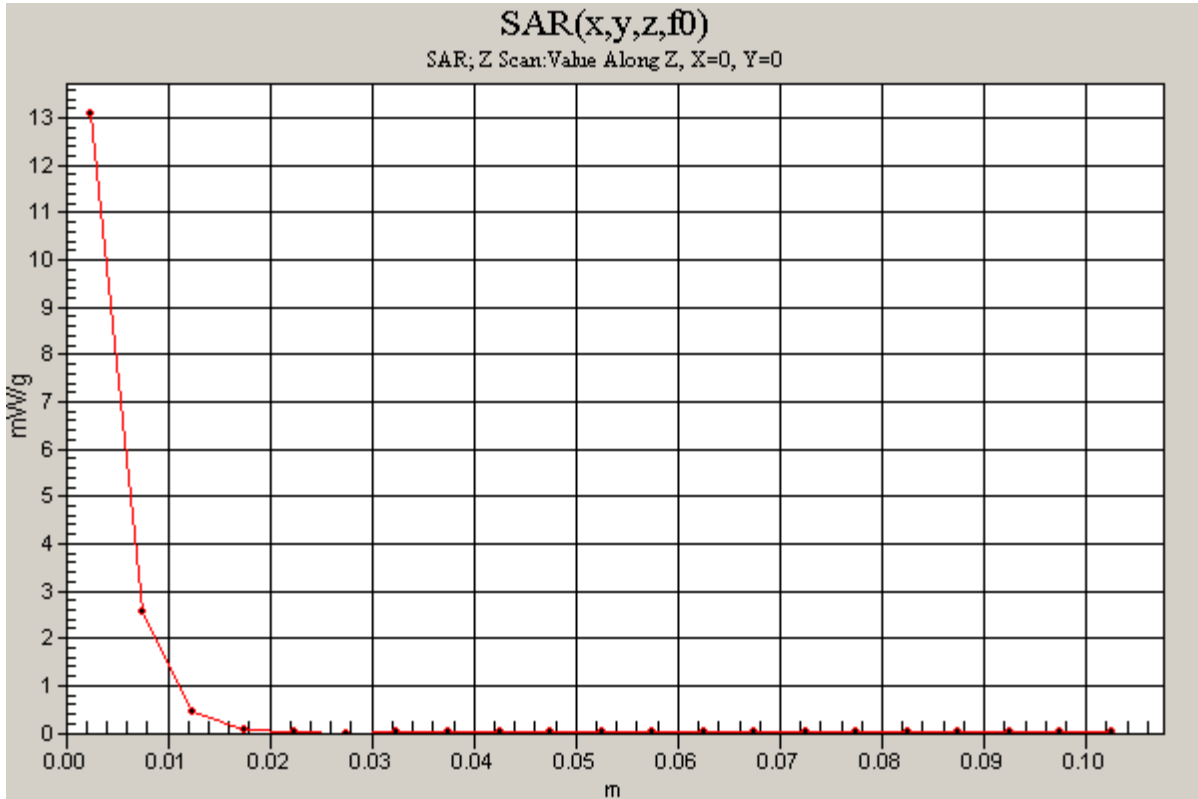
### 20150423\_System check\_Diple5GHzv2 SN1004

Frequency: 5200 MHz; Duty Cycle: 1:1

**Body/5200MHz,Pin=100mW,d= 2/Z Scan (1x1x21):** Measurement grid: dx=20mm, dy=20mm, dz=5mm

Info: [Interpolated medium parameters used for SAR evaluation.](#)

Maximum value of SAR (measured) = 13.1 mW/g



## 20150423\_System check\_Diple5GHzv2 SN1004

Frequency: 5300 MHz; Duty Cycle: 1:1; Room Ambient Temperature: 25.0°C; Liquid Temperature: 24.0°C

Medium parameters used:  $f = 5300.2$  MHz;  $\sigma = 5.55$  mho/m;  $\epsilon_r = 49.2$ ;  $\rho = 1000$  kg/m<sup>3</sup> ;

DASY4 Configuration:

- Area Scan setting - Find Secondary Maximum Within: 2.0 dB and with a peak SAR value greater than 0.0012W/kg
- Electronics: DAE4 Sn558; Calibrated: 7/22/2014
- Probe: EX3DV4 - SN3554; ConvF(3.84, 3.84, 3.84); Calibrated: 9/24/2014
- Sensor-Surface: 2.5mm (Mechanical Surface Detection)
- Phantom: Flat Phantom ELI4.0; Type: QDOVA001BA; Serial: SN: 1052

**Body/5300MHz,Pin=100mW,d= 2/Area Scan (7x7x1):** Measurement grid: dx=10mm, dy=10mm

Maximum value of SAR (measured) = 13.0 mW/g

**Body/5300MHz,Pin=100mW,d= 2/Zoom Scan (8x8x9)/Cube 0:** Measurement grid: dx=4mm,

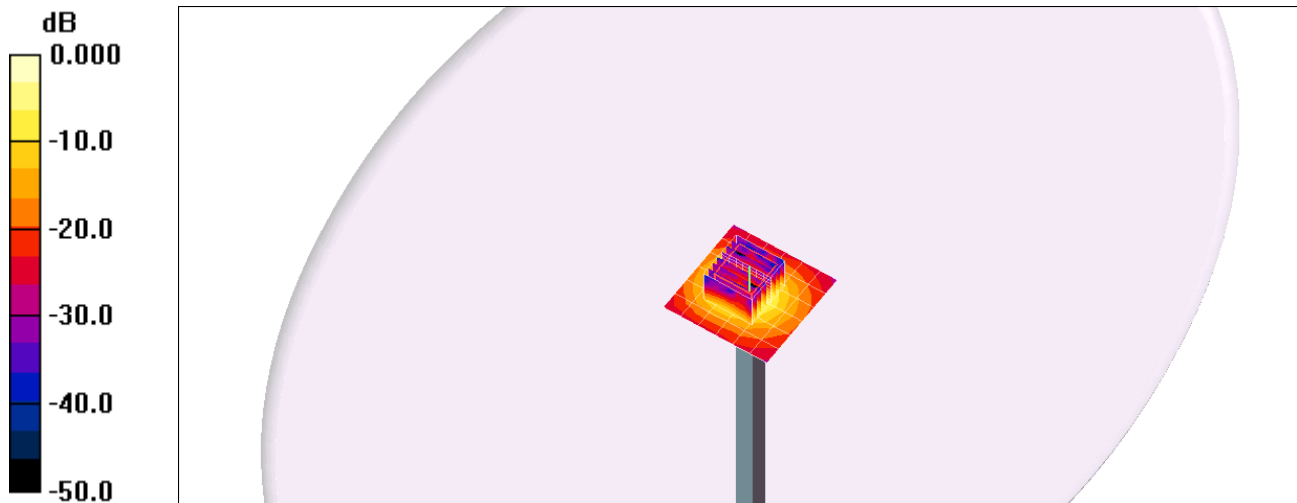
dy=4mm, dz=2.5mm

Reference Value = 51.6 V/m; Power Drift = -0.018 dB

Peak SAR (extrapolated) = 33.5 W/kg

**SAR(1 g) = 7.74 mW/g; SAR(10 g) = 2.17 mW/g**

Maximum value of SAR (measured) = 13.5 mW/g

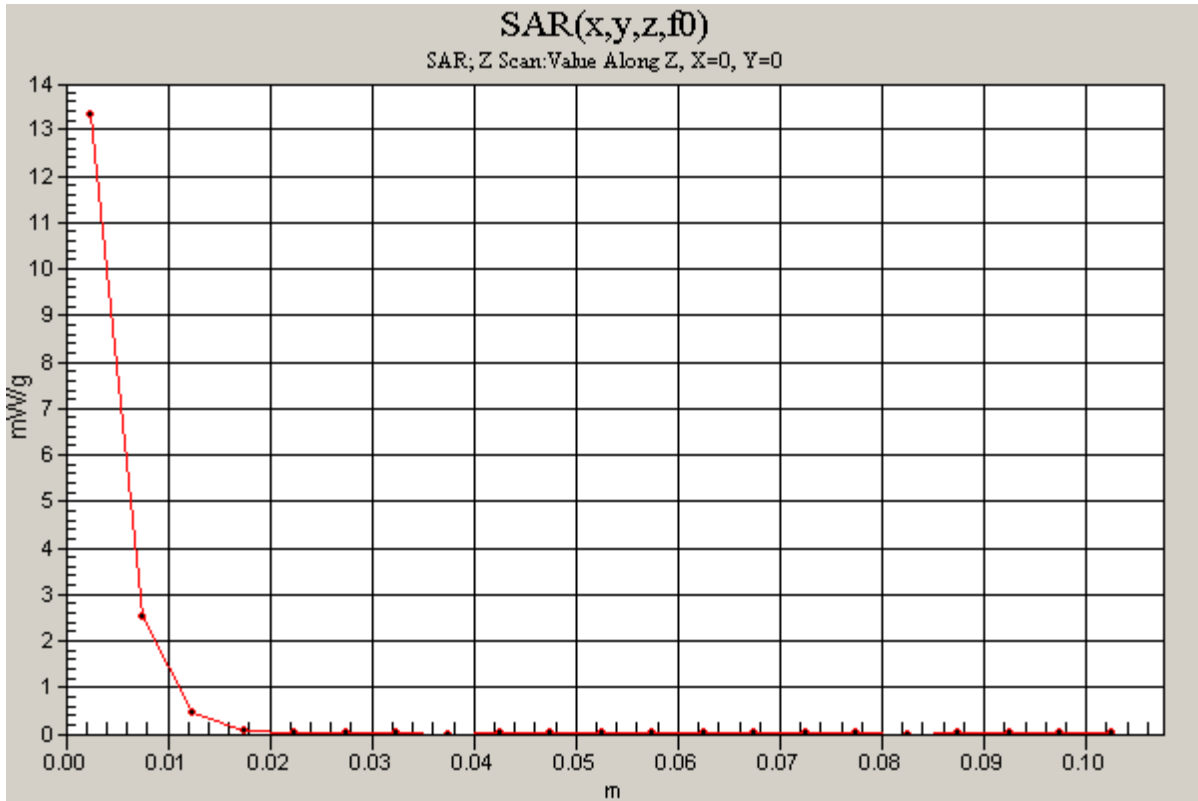


0 dB = 13.5mW/g

### 20150423\_System check\_Diple5GHzv2 SN1004

Frequency: 5300 MHz; Duty Cycle: 1:1

**Body/5300MHz,Pin=100mW,d= 2/Z Scan (1x1x21):** Measurement grid: dx=20mm, dy=20mm, dz=5mm  
Maximum value of SAR (measured) = 13.3 mW/g



## 20150423\_System check\_Diple5GHzv2 SN1004

Frequency: 5600 MHz; Duty Cycle: 1:1; Room Ambient Temperature: 25.0°C; Liquid Temperature: 24.0°C

Medium parameters used:  $f = 5600.5$  MHz;  $\sigma = 5.98$  mho/m;  $\epsilon_r = 48.4$ ;  $\rho = 1000$  kg/m<sup>3</sup> ;

DASY4 Configuration:

- Area Scan setting - Find Secondary Maximum Within: 2.0 dB and with a peak SAR value greater than 0.0012W/kg
- Electronics: DAE4 Sn558; Calibrated: 7/22/2014
- Probe: EX3DV4 - SN3554; ConvF(3.42, 3.42, 3.42); Calibrated: 9/24/2014
- Sensor-Surface: 2.5mm (Mechanical Surface Detection (Locations From Previous Scan Used))Sensor-Surface: 2.5mm (Mechanical Surface Detection)
- Phantom: Flat Phantom ELI4.0; Type: QDOVA001BA; Serial: SN: 1052

**Body/5600MHz,Pin=100mW,d= 2/Area Scan (7x7x1):** Measurement grid: dx=10mm, dy=10mm

Maximum value of SAR (measured) = 12.8 mW/g

**Body/5600MHz,Pin=100mW,d= 2/Zoom Scan (8x8x9)/Cube 0:** Measurement grid: dx=4mm,

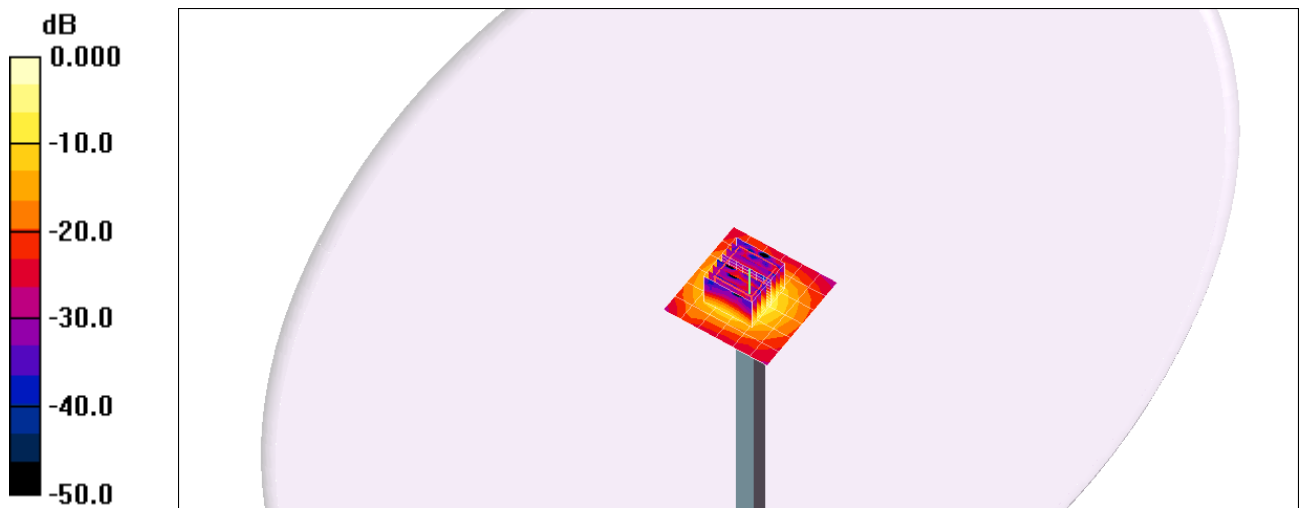
dy=4mm, dz=2.5mm

Reference Value = 49.5 V/m; Power Drift = 0.055 dB

Peak SAR (extrapolated) = 36.3 W/kg

**SAR(1 g) = 8.32 mW/g; SAR(10 g) = 2.34 mW/g**

Maximum value of SAR (measured) = 14.5 mW/g

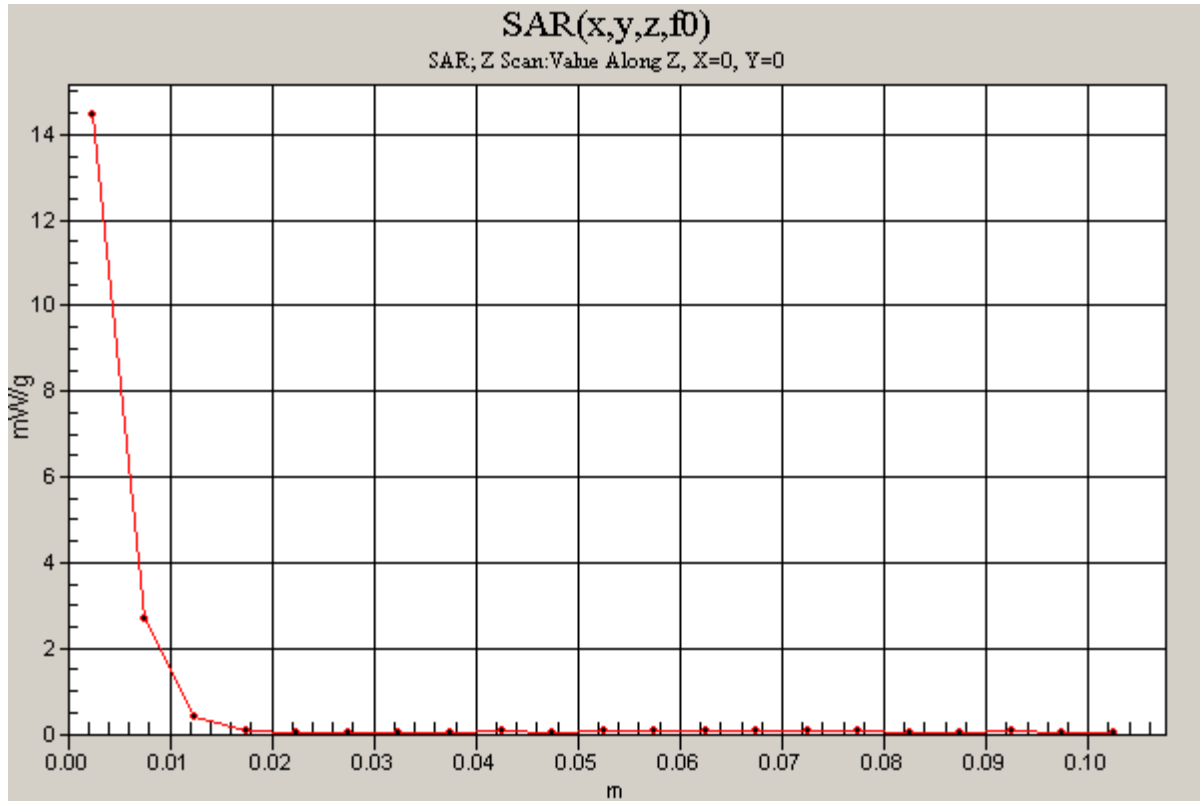


0 dB = 14.5mW/g

### 20150423\_System check\_Diple5GHzv2 SN1004

Frequency: 5600 MHz; Duty Cycle: 1:1

**Body/5600MHz,Pin=100mW,d= 2/Z Scan (1x1x21):** Measurement grid: dx=20mm, dy=20mm, dz=5mm  
Maximum value of SAR (measured) = 14.5 mW/g





## 20150423\_System check\_Diple5GHzv2 SN1004

Frequency: 5800 MHz; Duty Cycle: 1:1; Room Ambient Temperature: 25.0°C; Liquid Temperature: 24.0°C

Medium parameters used (interpolated):  $f = 5800$  MHz;  $\sigma = 6.21$  mho/m;  $\epsilon_r = 48$ ;  $\rho = 1000$  kg/m<sup>3</sup> ;

DASY4 Configuration:

- Area Scan setting - Find Secondary Maximum Within: 2.0 dB and with a peak SAR value greater than 0.0012W/kg
- Electronics: DAE4 Sn558; Calibrated: 7/22/2014
- Probe: EX3DV4 - SN3554; ConvF(3.57, 3.57, 3.57); Calibrated: 9/24/2014
- Sensor-Surface: 2.5mm (Mechanical Surface Detection)
- Phantom: Flat Phantom ELI4.0; Type: QDOVA001BA; Serial: SN: 1052

**Body/5800MHz,Pin=100mW,d= 2/Area Scan (7x7x1):** Measurement grid: dx=10mm, dy=10mm

[Info: Interpolated medium parameters used for SAR evaluation.](#)

Maximum value of SAR (measured) = 9.84 mW/g

**Body/5800MHz,Pin=100mW,d= 2/Zoom Scan (8x8x9)/Cube 0:** Measurement grid: dx=4mm, dy=4mm, dz=2.5mm

Reference Value = 42.7 V/m; Power Drift = 0.094 dB

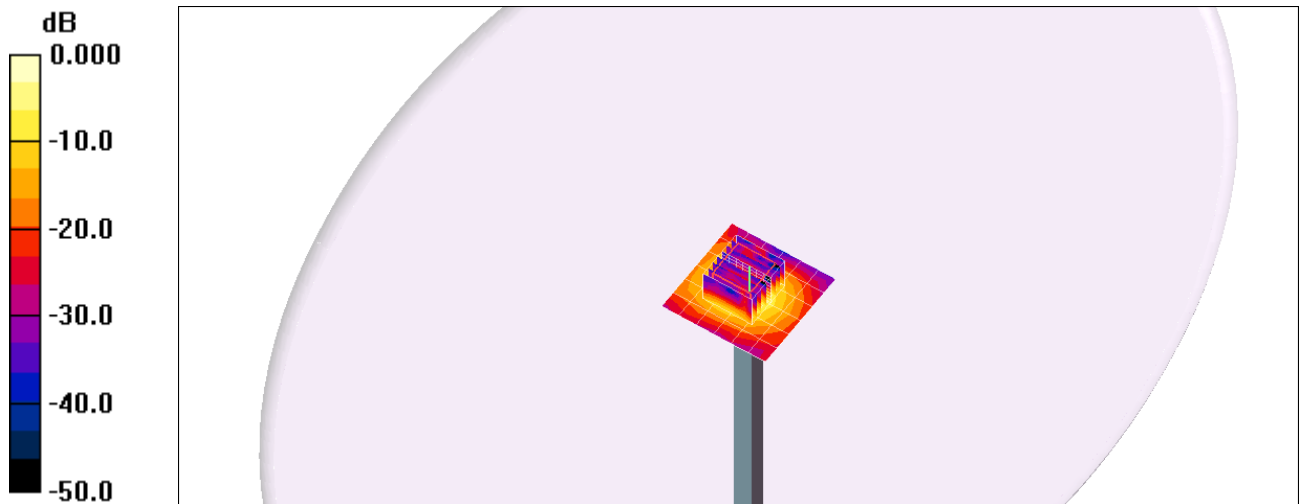
Peak SAR (extrapolated) = 31.7 W/kg

Peak SAR (extrapolated) = 31.7 W/kg

**SAR(1 g) = 7.16 mW/g; SAR(10 g) = 2.01 mW/g**

[Info: Interpolated medium parameters used for SAR evaluation.](#)

Maximum value of SAR (measured) = 12.1 mW/g



0 dB = 12.1mW/g

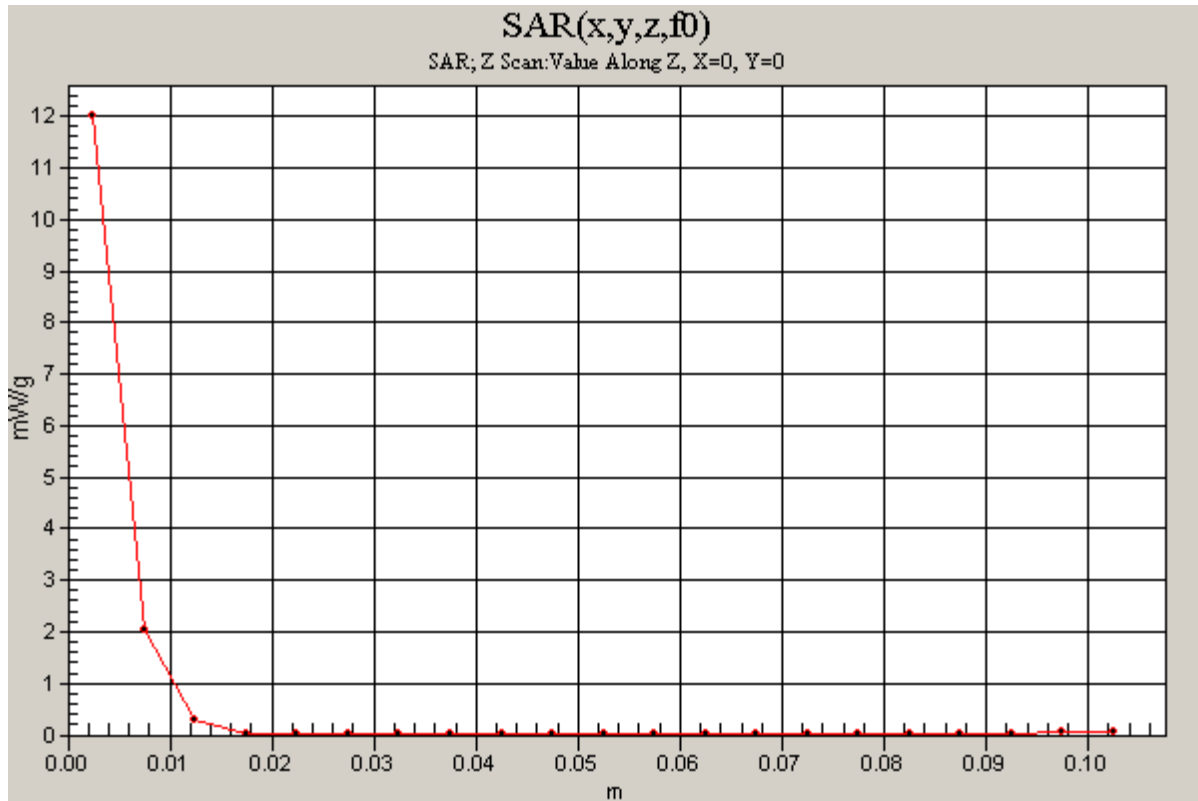
## 20150423\_System check\_Diple5GHzv2 SN1004

Frequency: 5800 MHz; Duty Cycle: 1:1

**Body/5800MHz,Pin=100mW,d= 2/Z Scan (1x1x21):** Measurement grid: dx=20mm, dy=20mm, dz=5mm

Info: [Interpolated medium parameters used for SAR evaluation.](#)

Maximum value of SAR (measured) = 12.0 mW/g



## 20150429\_System check\_Diple5GHzv2 SN1004

Frequency: 5200 MHz; Duty Cycle: 1:1; Room Ambient Temperature: 25.0°C; Liquid Temperature: 24.0°C

Medium parameters used (interpolated):  $f = 5200$  MHz;  $\sigma = 5.3$  mho/m;  $\epsilon_r = 49.1$ ;  $\rho = 1000$  kg/m<sup>3</sup> ;

DASY4 Configuration:

- Area Scan setting - Find Secondary Maximum Within: 2.0 dB and with a peak SAR value greater than 0.0012W/kg
- Electronics: DAE4 Sn558; Calibrated: 7/22/2014
- Probe: EX3DV4 - SN3554; ConvF(4.02, 4.02, 4.02); Calibrated: 9/24/2014
- Sensor-Surface: 2.5mm (Mechanical Surface Detection)
- Phantom: Flat Phantom ELI4.0; Type: QDOVA001BA; Serial: SN: 1052

**Body/5200MHz,Pin=100mW,d= 2/Area Scan (7x7x1):** Measurement grid: dx=10mm, dy=10mm

[Info: Interpolated medium parameters used for SAR evaluation.](#)

Maximum value of SAR (measured) = 15.7 mW/g

**Body/5200MHz,Pin=100mW,d= 2/Zoom Scan (8x8x9)/Cube 0:** Measurement grid: dx=4mm, dy=4mm, dz=2.5mm

Reference Value = 57.5 V/m; Power Drift = -0.041 dB

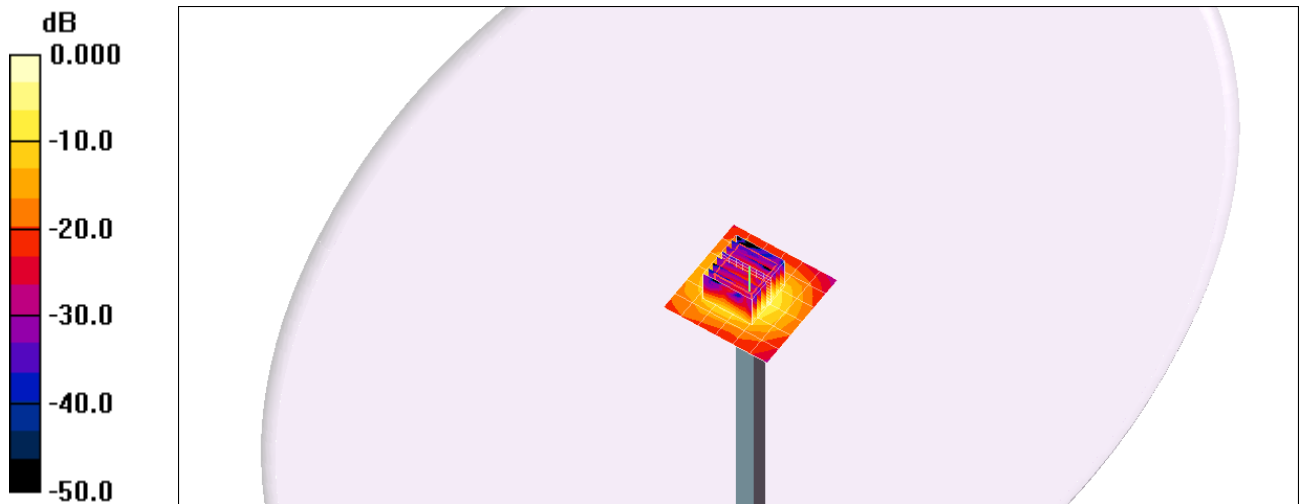
Peak SAR (extrapolated) = 31.4 W/kg

Peak SAR (extrapolated) = 31.4 W/kg

**SAR(1 g) = 7.36 mW/g; SAR(10 g) = 2.06 mW/g**

[Info: Interpolated medium parameters used for SAR evaluation.](#)

Maximum value of SAR (measured) = 12.8 mW/g



0 dB = 12.8mW/g

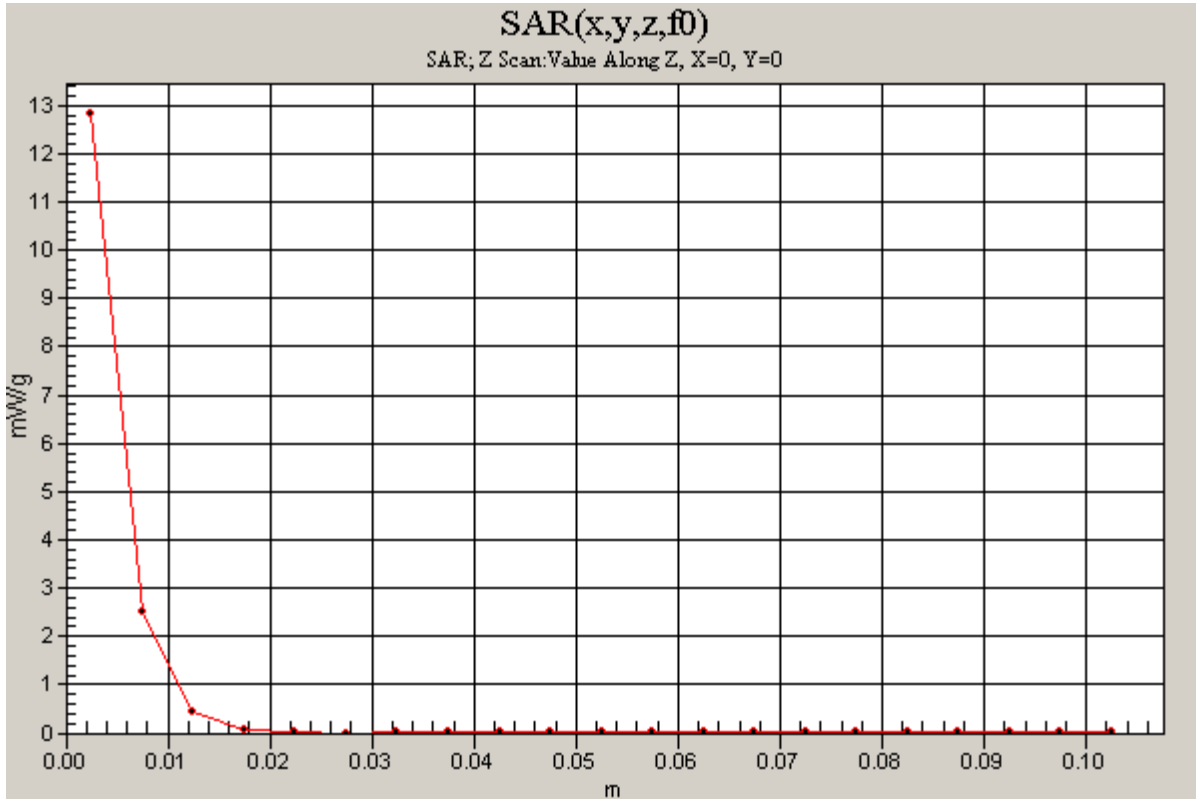
### 20150429\_System check\_Diple5GHzv2 SN1004

Frequency: 5200 MHz; Duty Cycle: 1:1

**Body/5200MHz,Pin=100mW,d= 2/Z Scan (1x1x21):** Measurement grid: dx=20mm, dy=20mm, dz=5mm

Info: [Interpolated medium parameters used for SAR evaluation.](#)

Maximum value of SAR (measured) = 12.8 mW/g



## 20150429\_System check\_Diple5GHzv2 SN1004

Frequency: 5300 MHz; Duty Cycle: 1:1; Room Ambient Temperature: 25.0°C; Liquid Temperature: 24.0°C

Medium parameters used:  $f = 5300.2$  MHz;  $\sigma = 5.44$  mho/m;  $\epsilon_r = 48.9$ ;  $\rho = 1000$  kg/m<sup>3</sup> ;

DASY4 Configuration:

- Area Scan setting - Find Secondary Maximum Within: 2.0 dB and with a peak SAR value greater than 0.0012W/kg
- Electronics: DAE4 Sn558; Calibrated: 7/22/2014
- Probe: EX3DV4 - SN3554; ConvF(3.84, 3.84, 3.84); Calibrated: 9/24/2014
- Sensor-Surface: 2.5mm (Mechanical Surface Detection)
- Phantom: Flat Phantom ELI4.0; Type: QDOVA001BA; Serial: SN: 1052

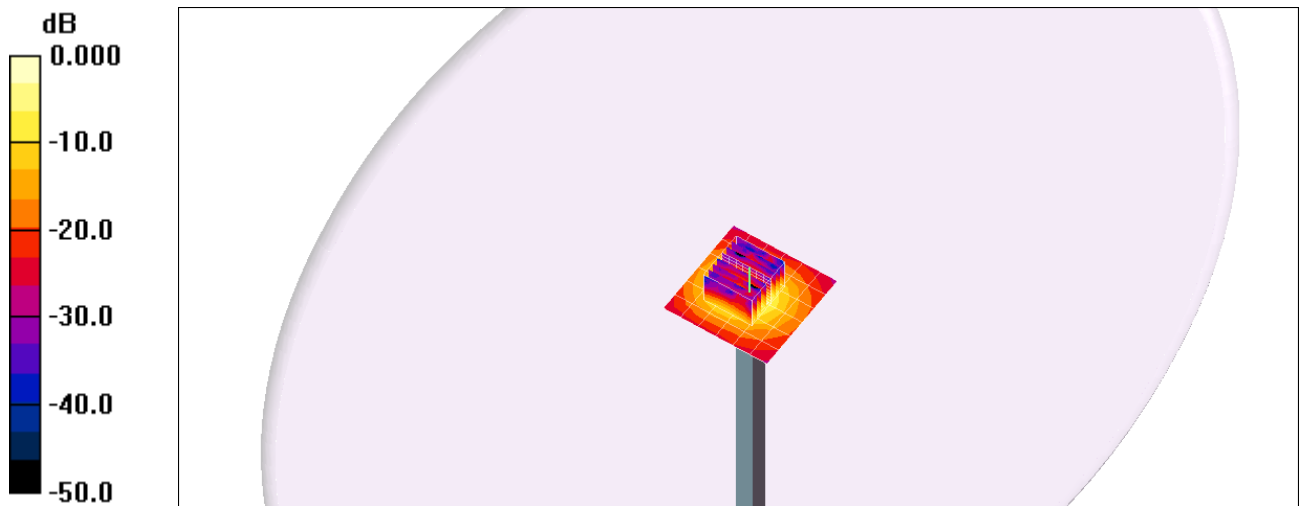
**Body/5300MHz,Pin=100mW,d= 2/Area Scan (7x7x1):** Measurement grid: dx=10mm, dy=10mm

Maximum value of SAR (measured) = 12.8 mW/g

**Body/5300MHz,Pin=100mW,d= 2/Zoom Scan (8x8x9)/Cube 0:** Measurement grid: dx=4mm, dy=4mm, dz=2.5mm

Reference Value = 51.6 V/m; Power Drift = -0.018 dB

Maximum value of SAR (measured) = 13.2 mW/g

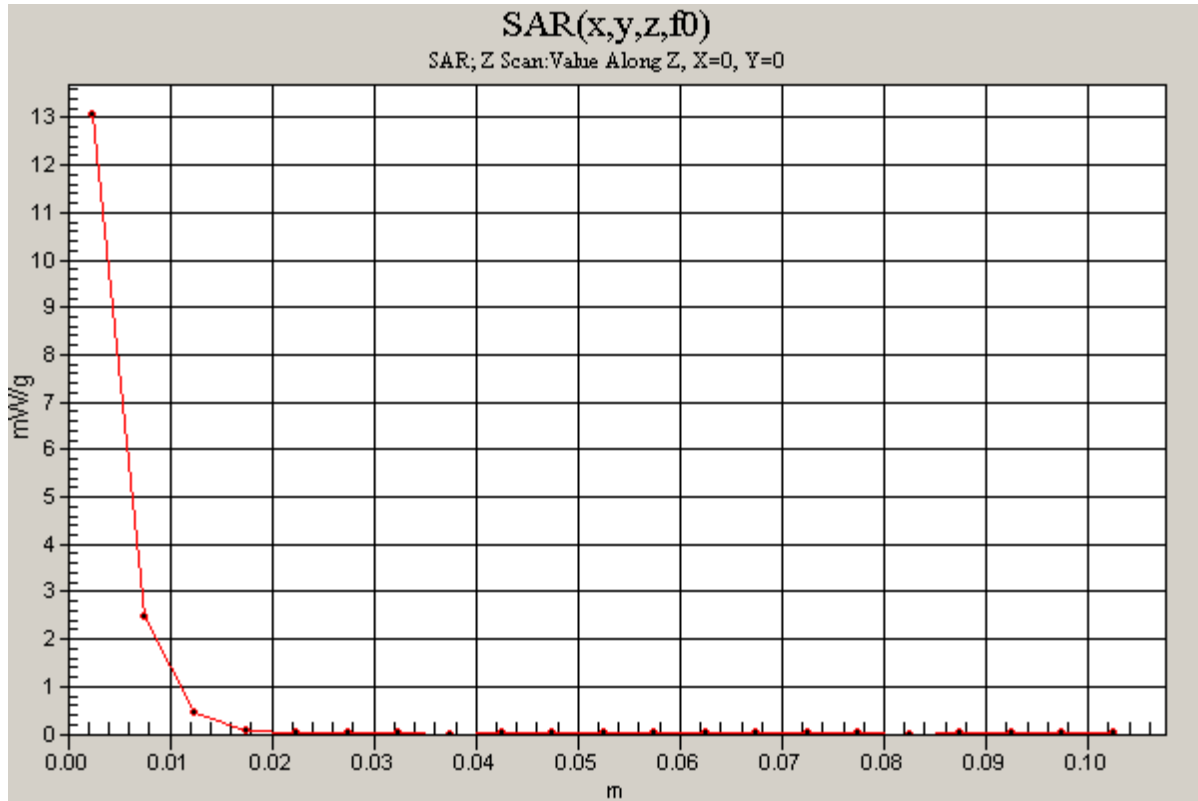


0 dB = 13.2mW/g

### 20150429\_System check\_Diple5GHzv2 SN1004

Frequency: 5300 MHz; Duty Cycle: 1:1

**Body/5300MHz,Pin=100mW,d= 2/Z Scan (1x1x21):** Measurement grid: dx=20mm, dy=20mm, dz=5mm  
Maximum value of SAR (measured) = 13.1 mW/g



## 20150429\_System check\_Diple5GHzv2 SN1004

Frequency: 5600 MHz; Duty Cycle: 1:1; Room Ambient Temperature: 25.0°C; Liquid Temperature: 24.0°C

Medium parameters used:  $f = 5600.5$  MHz;  $\sigma = 5.82$  mho/m;  $\epsilon_r = 48.4$ ;  $\rho = 1000$  kg/m<sup>3</sup> ;

DASY4 Configuration:

- Area Scan setting - Find Secondary Maximum Within: 2.0 dB and with a peak SAR value greater than 0.0012W/kg
- Electronics: DAE4 Sn558; Calibrated: 7/22/2014
- Probe: EX3DV4 - SN3554; ConvF(3.42, 3.42, 3.42); Calibrated: 9/24/2014
- Sensor-Surface: 2.5mm (Mechanical Surface Detection (Locations From Previous Scan Used))Sensor-Surface: 2.5mm (Mechanical Surface Detection)
- Phantom: Flat Phantom ELI4.0; Type: QDOVA001BA; Serial: SN: 1052

**Body/5600MHz,Pin=100mW,d= 2/Area Scan (7x7x1):** Measurement grid: dx=10mm, dy=10mm

Maximum value of SAR (measured) = 12.5 mW/g

**Body/5600MHz,Pin=100mW,d= 2/Zoom Scan (8x8x9)/Cube 0:** Measurement grid: dx=4mm,

dy=4mm, dz=2.5mm

Reference Value = 49.5 V/m; Power Drift = 0.065 dB

Peak SAR (extrapolated) = 35.3 W/kg

**SAR(1 g) = 8.1 mW/g; SAR(10 g) = 2.27 mW/g**

Maximum value of SAR (measured) = 14.1 mW/g

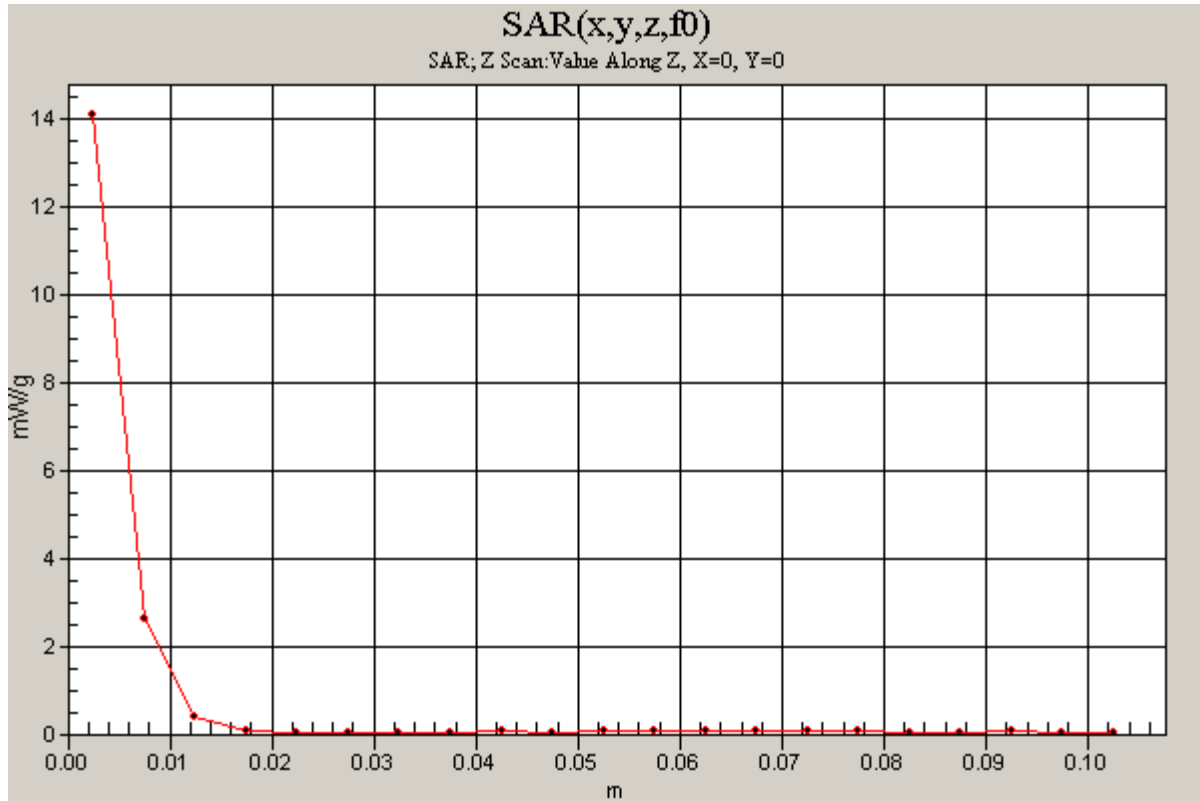


0 dB = 14.1mW/g

### 20150429\_System check\_Diple5GHzv2 SN1004

Frequency: 5600 MHz; Duty Cycle: 1:1

**Body/5600MHz,Pin=100mW,d= 2/Z Scan (1x1x21):** Measurement grid: dx=20mm, dy=20mm, dz=5mm  
Maximum value of SAR (measured) = 14.1 mW/g





## 20150429\_System check\_Diple5GHzv2 SN1004

Frequency: 5800 MHz; Duty Cycle: 1:1; Room Ambient Temperature: 25.0°C; Liquid Temperature: 24.0°C

Medium parameters used (interpolated):  $f = 5800$  MHz;  $\sigma = 6.09$  mho/m;  $\epsilon_r = 48.1$ ;  $\rho = 1000$  kg/m<sup>3</sup> ;

DASY4 Configuration:

- Area Scan setting - Find Secondary Maximum Within: 2.0 dB and with a peak SAR value greater than 0.0012W/kg
- Electronics: DAE4 Sn558; Calibrated: 7/22/2014
- Probe: EX3DV4 - SN3554; ConvF(3.57, 3.57, 3.57); Calibrated: 9/24/2014
- Sensor-Surface: 2.5mm (Mechanical Surface Detection)
- Phantom: Flat Phantom ELI4.0; Type: QDOVA001BA; Serial: SN: 1052

**Body/5800MHz,Pin=100mW,d= 2/Area Scan (7x7x1):** Measurement grid: dx=10mm, dy=10mm

[Info: Interpolated medium parameters used for SAR evaluation.](#)

Maximum value of SAR (measured) = 15.5 mW/g

**Body/5800MHz,Pin=100mW,d= 2/Zoom Scan (8x8x9)/Cube 0:** Measurement grid: dx=4mm, dy=4mm, dz=2.5mm

Reference Value = 54.2 V/m; Power Drift = -0.068 dB

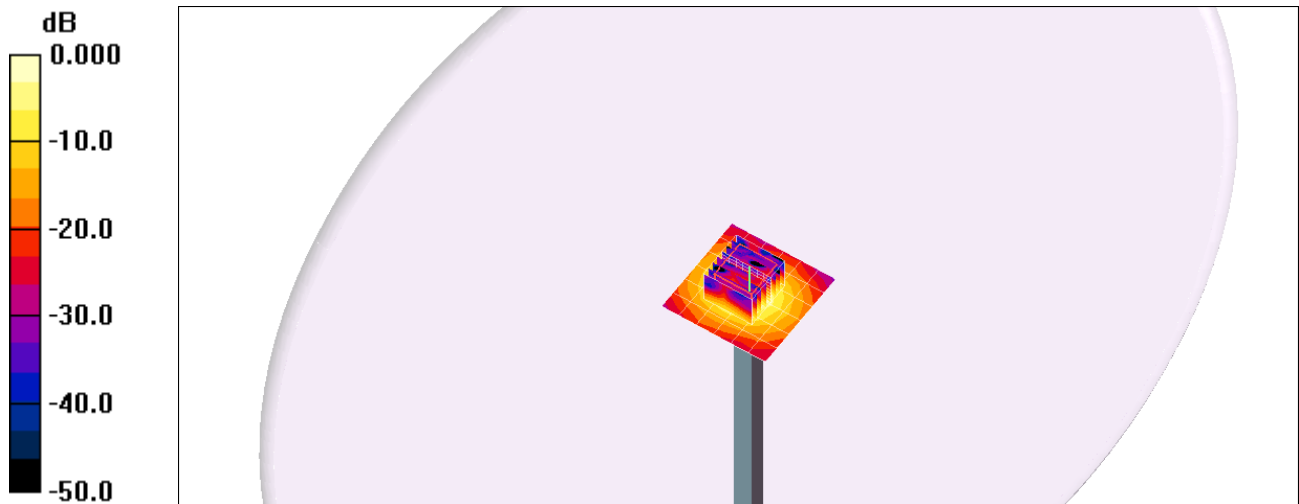
Peak SAR (extrapolated) = 31.4 W/kg

Peak SAR (extrapolated) = 31.4 W/kg

**SAR(1 g) = 7.38 mW/g; SAR(10 g) = 2.1 mW/g**

[Info: Interpolated medium parameters used for SAR evaluation.](#)

Maximum value of SAR (measured) = 12.6 mW/g



0 dB = 12.6mW/g

### 20150429\_System check\_Diple5GHzv2 SN1004

Frequency: 5800 MHz; Duty Cycle: 1:1

**Body/5800MHz,Pin=100mW,d= 2/Z Scan (1x1x21):** Measurement grid: dx=20mm, dy=20mm, dz=5mm

Info: [Interpolated medium parameters used for SAR evaluation.](#)

Maximum value of SAR (measured) = 12.5 mW/g

