



ASLINK (H.K.) PRECISION CO., LTD

## SPECIFICATION

CUSTOMER: ASUS AOOD  
CUSTOMER P/N : 14G150019000  
PART NO. : 90ZLARFC0023A  
DESCRIPTION: 2dBi AP Antenna + R-SMA 2.4GHz WHITE  
ISSUE DATE : 2008/10/30  
REV. : X1

Drawn	Check	Approved
Jerry Lin	Dio Chung	Rich Liu



2dBi AP Antenna + R-SMA 2.4GHz  
WHITE 規格書

CUSTOMER P/N:  
14G150019000

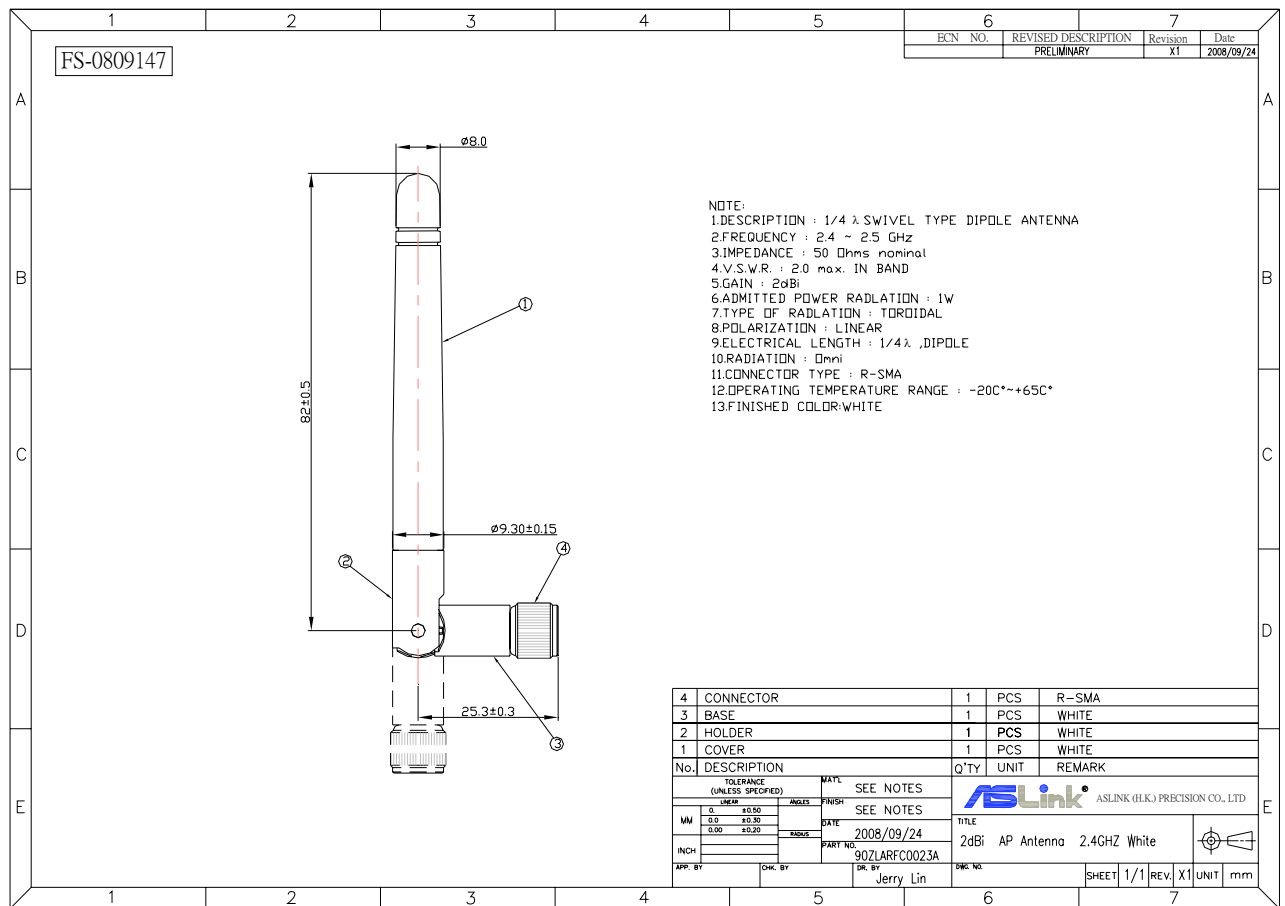
### 1.Scope:

This specification is for the requirement of 2dBi AP Antenna + R-SMA 2.4GHz WHITE

### 2.ASLink P/N & Drawing:

ASLink P/N:90ZLARFC0023A

Drawing:



Date	2008/10/30	Drawn	Jerry	Check	Dio	Approved	Rich
------	------------	-------	-------	-------	-----	----------	------

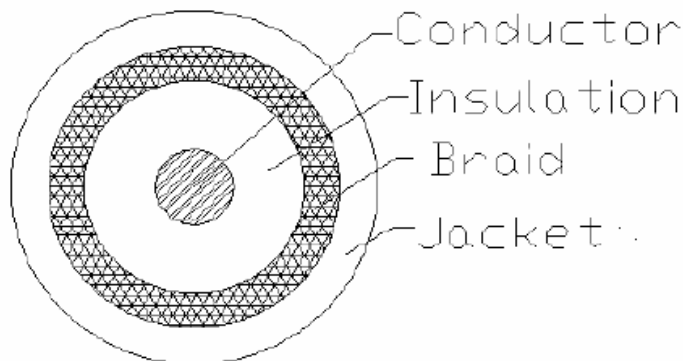


2dBi AP Antenna + R-SMA 2.4GHz  
WHITE 規格書

CUSTOMER P/N:  
14G150019000

### 3. RF CABLE SPECIFICATION

CABLE SPECIFICATION									
Description:	RF CABLE 50Ω #30 (7/0.102) × 1C								
UL File NO.:	E315781	UL Style:	1354	REV.	02	Part. NO.:	/	Sheet:	1 of 1
CSA File NO.:	/	CSA Style:	/	Data:	08-01-09	Path:	/		
Construction Item(結構項目)				Specification(規格值)					
Conductor (導體)	Construction AWG(線規)	AWG	32						
	Material(材質)	/	Silver Plated Copper(鍍銀軟銅線)						
	Filler Material(填充材料)	/							
	Construction(結構)	NO/mm	7/0.102						
	Stranded diameter(絞合外徑)	mm	0.306						
Insulation (絕緣)	Material(材質)	/	Teflon						
	Diameter(線徑)	mm	0.90 ± 0.05						
	AVG. Thickness(平均厚度)	mm	0.297						
	Color(顏色)	/	Transparence(透明)						
Braid Shield (編織)	Material(材質)	/	Solid Tinned Copper(鍍錫線)16/5/0.05						
	Coverage(遮蔽率)	%	90以上						
Jacket(外被)	Material(材質)	/	Teflon						
	Diameter(線徑)	mm	1.37 ± 0.05						
	AVG. Thickness(平均厚度)	mm	0.12						
	Color(顏色)	/	GRAY/BLACK/WHITE						
	Extrusion Style(押出方式)	/	Tube(管狀)						
	Surface(外觀)	/	Plane(平面霧亮)						
Marking(印字)									
Properties(特性):									
1.Insertion Loss data(衰減)(max.): 1.6db @ 1GHz 2.4db @ 2GHz 2.9db @ 3GHz 3.4db @ 4GHz 3.9db @ 5GHz 4.3db @ 6GHz									
2.Impedance(阻抗): 50±3Ω (TDR 250PS&500PS)									
3.Return Loss(反射損失)(min.): 20.0 @ 2.4-2.5GHz 14.5 @ 4.8-6.0GHz									
Approved:				Checked:		Drawing:		柯海林	



Date	2008/10/30	Drawn	Jerry	Check	Dio	Approved	Rich
------	------------	-------	-------	-------	-----	----------	------

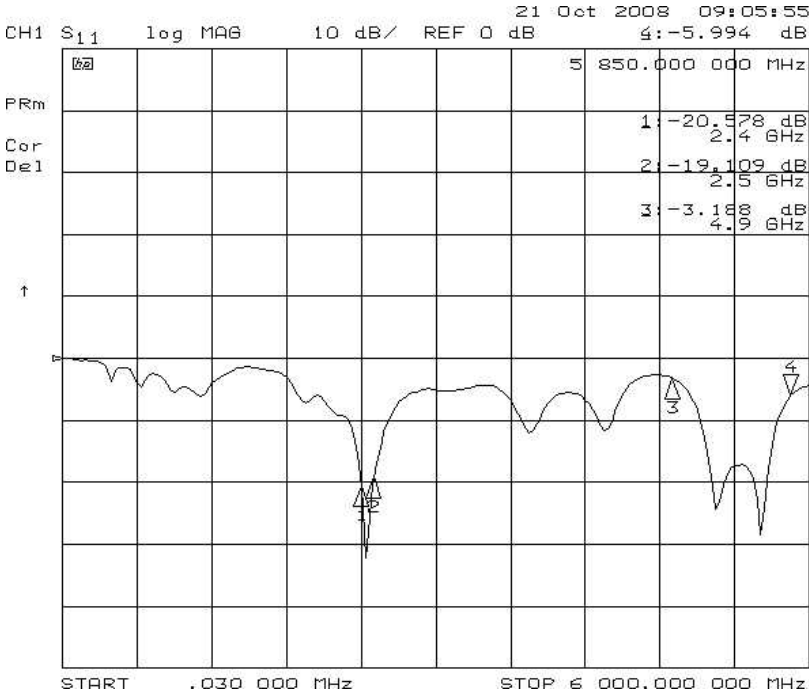


2dBi AP Antenna + R-SMA  
WHITE 規格書

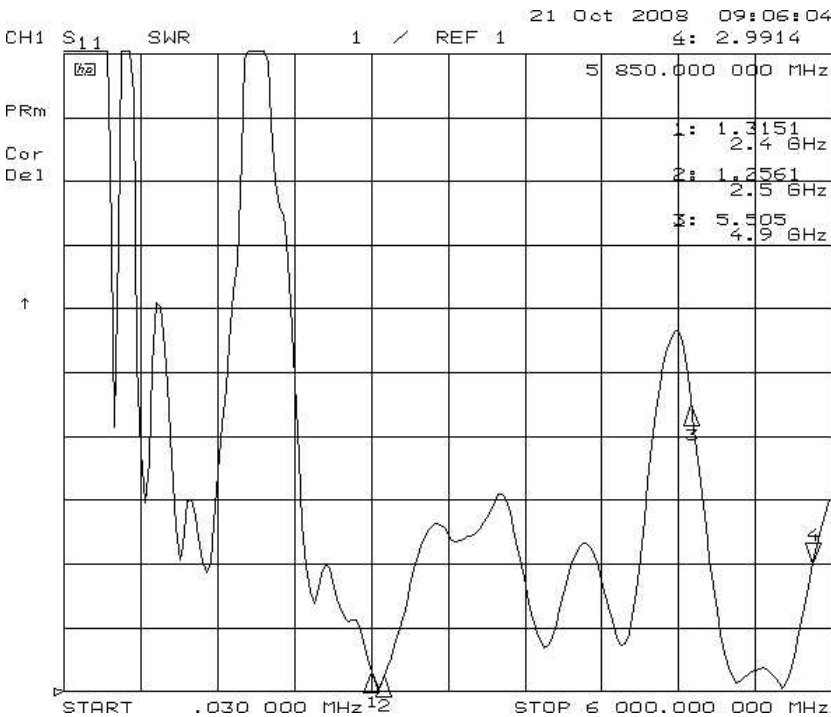
2.4GHz

CUSTOMER P/N:  
14G150019000

#### 4. ANTENNA RETURN LOSS



#### 5. ANTENNA VSWR



Date	2008/10/30	Drawn	Jerry	Check	Dio	Approved	Rich
------	------------	-------	-------	-------	-----	----------	------

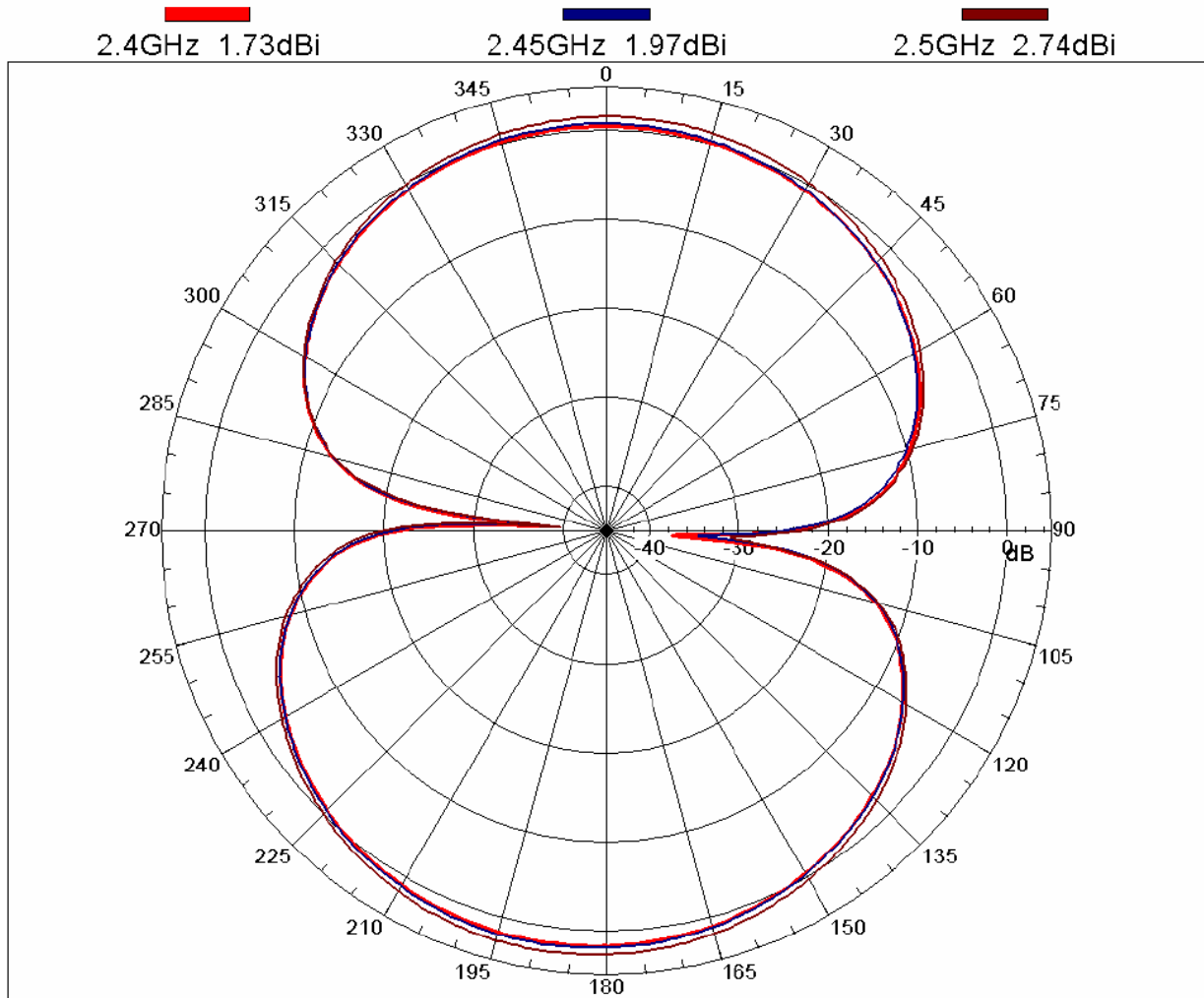


2dBi AP Antenna + R-SMA 2.4GHz  
WHITE 規格書

CUSTOMER P/N:  
14G150019000

## 6. V-PLANE PATTERN

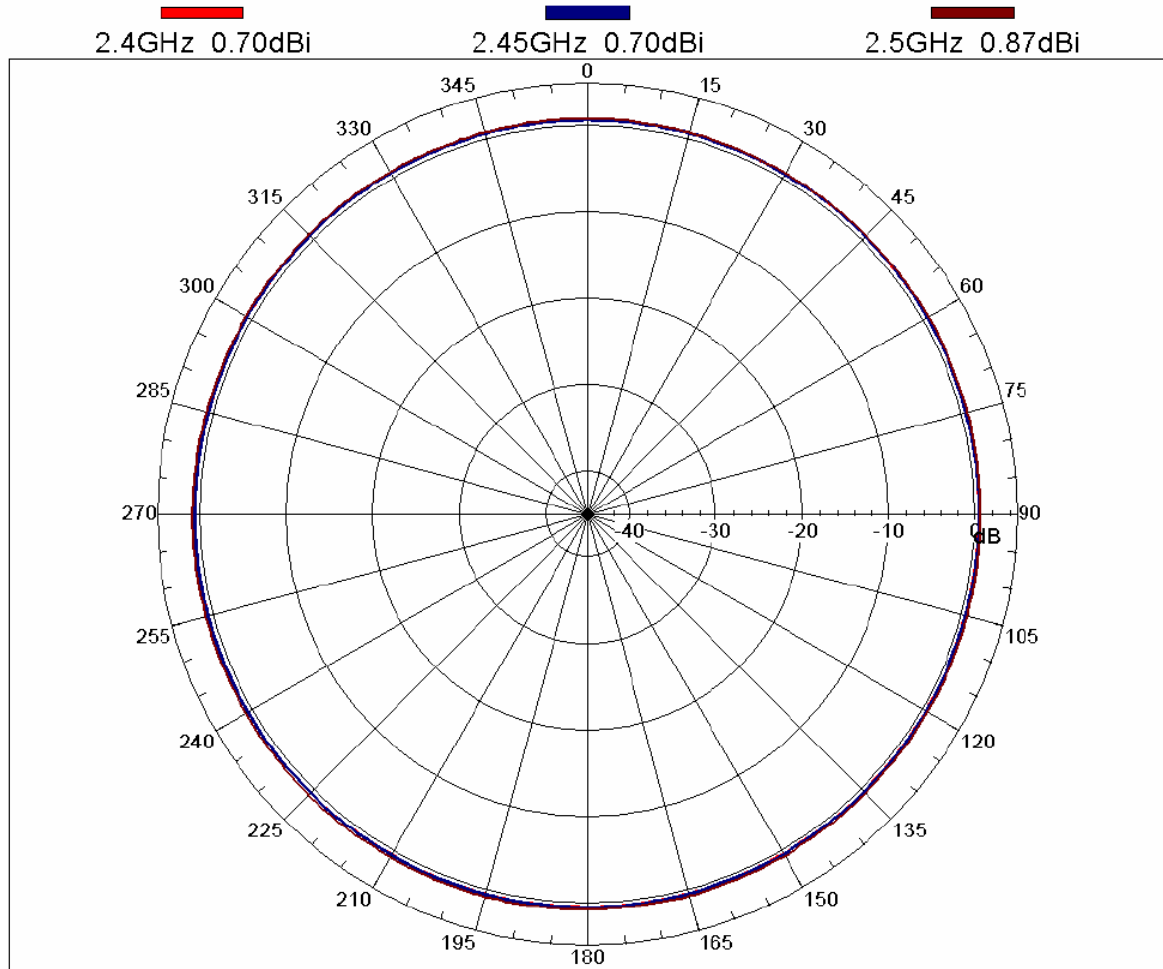
Far-field amplitude of SMA Dipole 2400 TO 2500MHz E-Patten01.nsi



Date	2008/10/30	Drawn	Jerry	Check	Dio	Approved	Rich
------	------------	-------	-------	-------	-----	----------	------

### 7. H- PLANE PATTERN

Far-field amplitude of SMA Dipole 2400 TO 2500MHz H-Patten02.nsi



Date	2008/10/30	Drawn	Jerry	Check	Dio	Approved	Rich
------	------------	-------	-------	-------	-----	----------	------