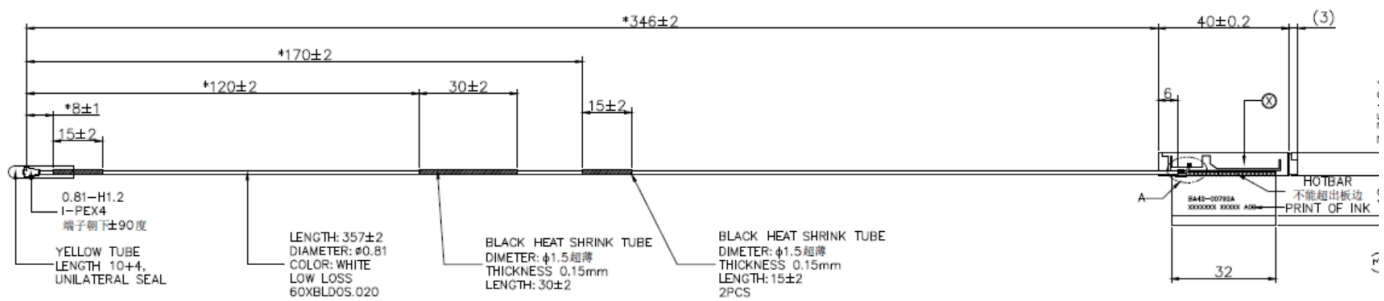


**Note: antenna photo should include L type ruler**

## Aux Antenna

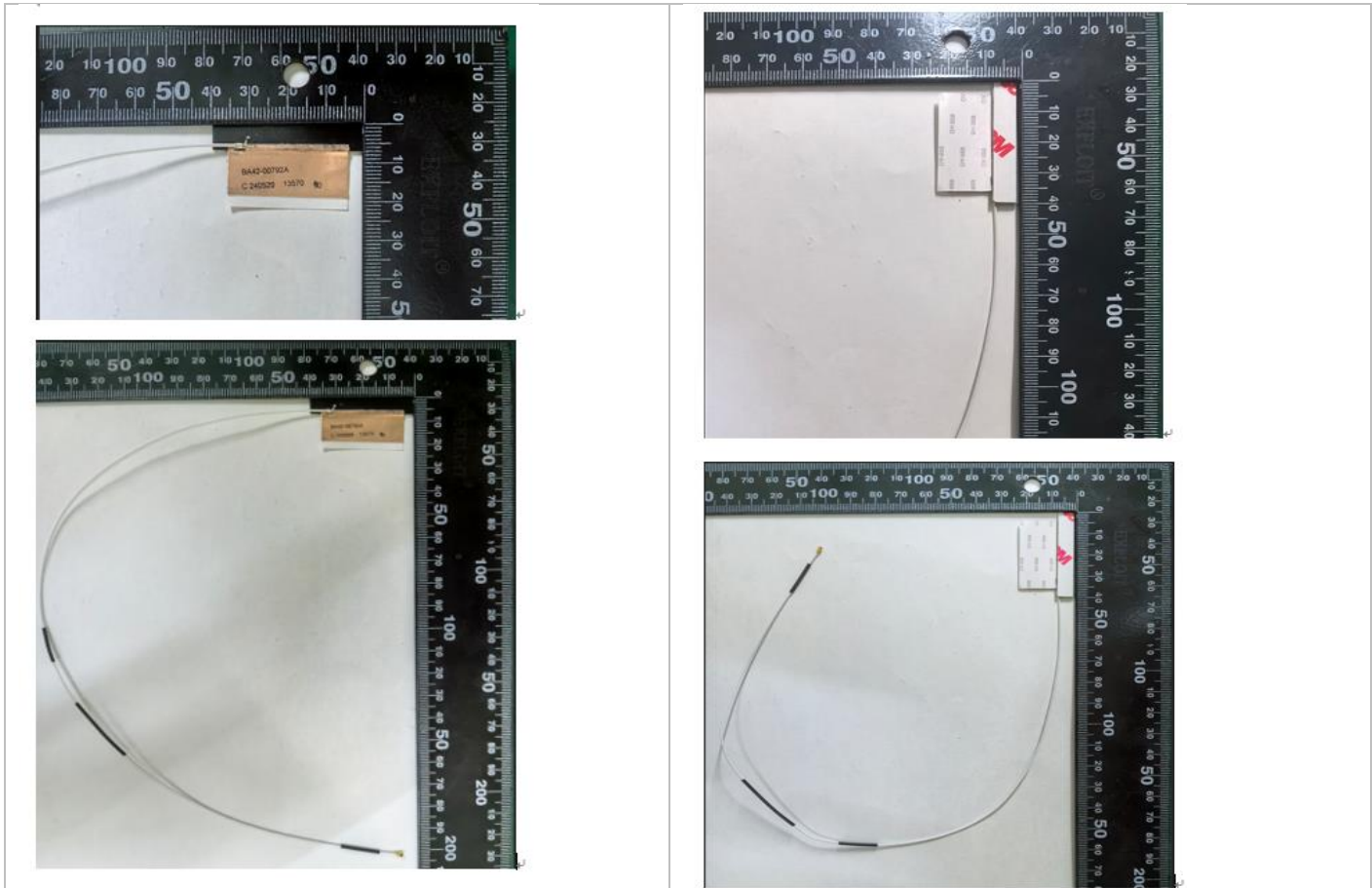
### Antenna Drawing



### Antenna Photo

Front

Back



**Note: antenna photo should include L type ruler**

## Annex B. Antenna Location

### B.1 Antenna Host Platform Location Information

Include a dimensioned photo(s) or dimensioned drawing(s) of Main and Aux antenna placements (measurements are not required for receive-only antenna).

Any antenna that transmits must show dimensions to bottom of laptop. Provide a description of the materials that are used for supporting or surrounding transmit antennas; for example, non-conductive plastics vs. conductive coated plastic or metallic materials.