

EXHIBIT O

Photographs

Photographs of the ARTU and the circuit boards involved in producing the transmitted signal are shown on the following pages.

Front View

The photograph on page two is the Front View of the ARTU. All external electrical connections are made to the front panel of the unit.

Rear View

The photograph on page three is of the Rear View of the ARTU. The two holes located at the bottom of the rear unit plate, mate with the tray pins for mechanical attachment.

Front View Disassembled

The photograph on page four is of the Front View of the ARTU with the front panel swung open to reveal the front internal connections and construction.

Rear View Disassembled

The photograph on page five four is of the Rear View of the ARTU with the Rear panel swung open to reveal the internal connections and construction.

Base Band Signal Processor

The photographs on pages 6 and 7 are of the component and back side of the base band signal processor circuit card assembly.

Transmit IF

The photographs on pages 8 and 9 are of the component and back side of the transmit IF circuit card assembly.

RF Power Amplifier

The photographs on pages 10 and 11 are of the component and back side of the RF power amplifier assembly.

RF Down Converter

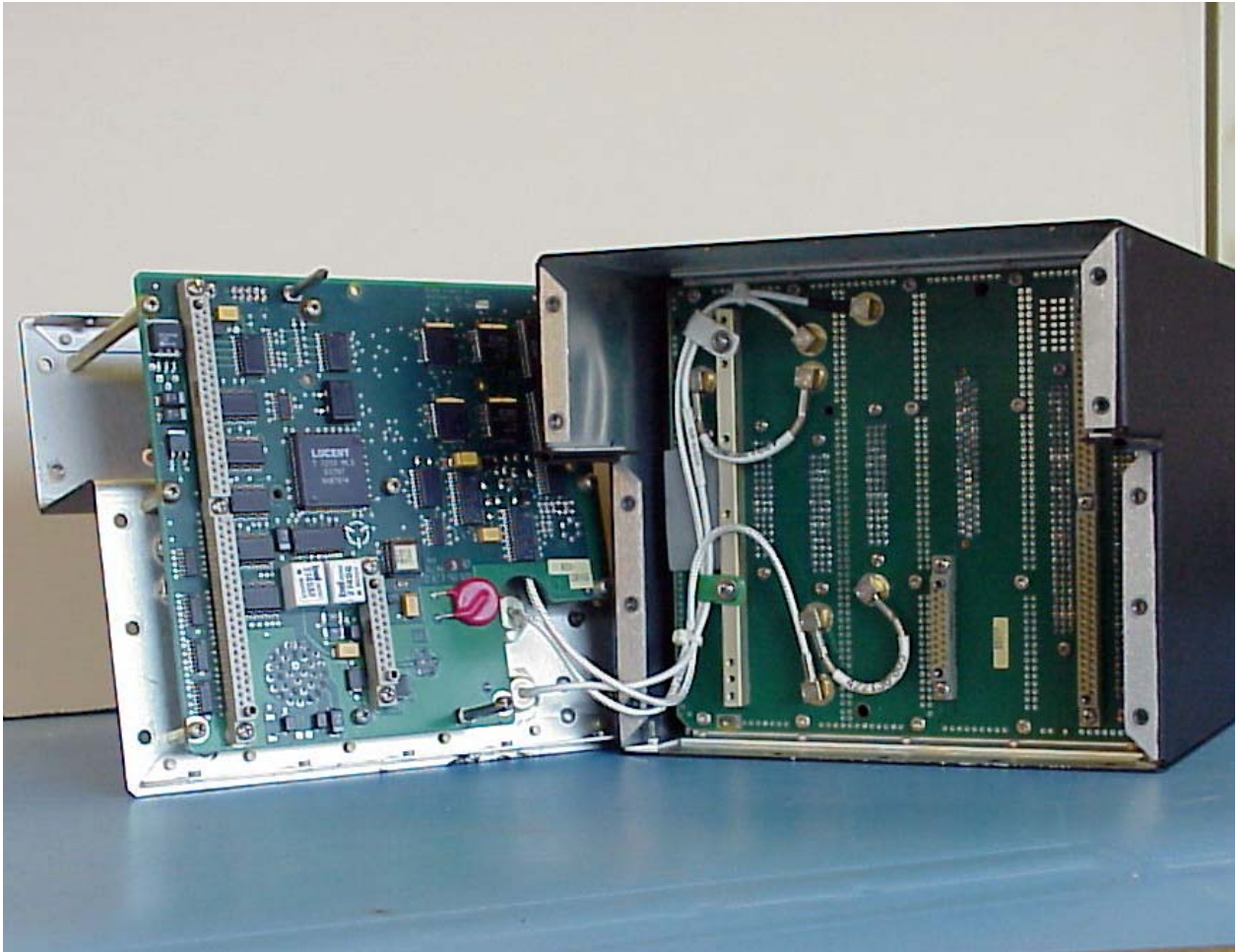
The photographs on pages 12 and 13 are of the component and back side of the RF Down converter circuit card assembly.



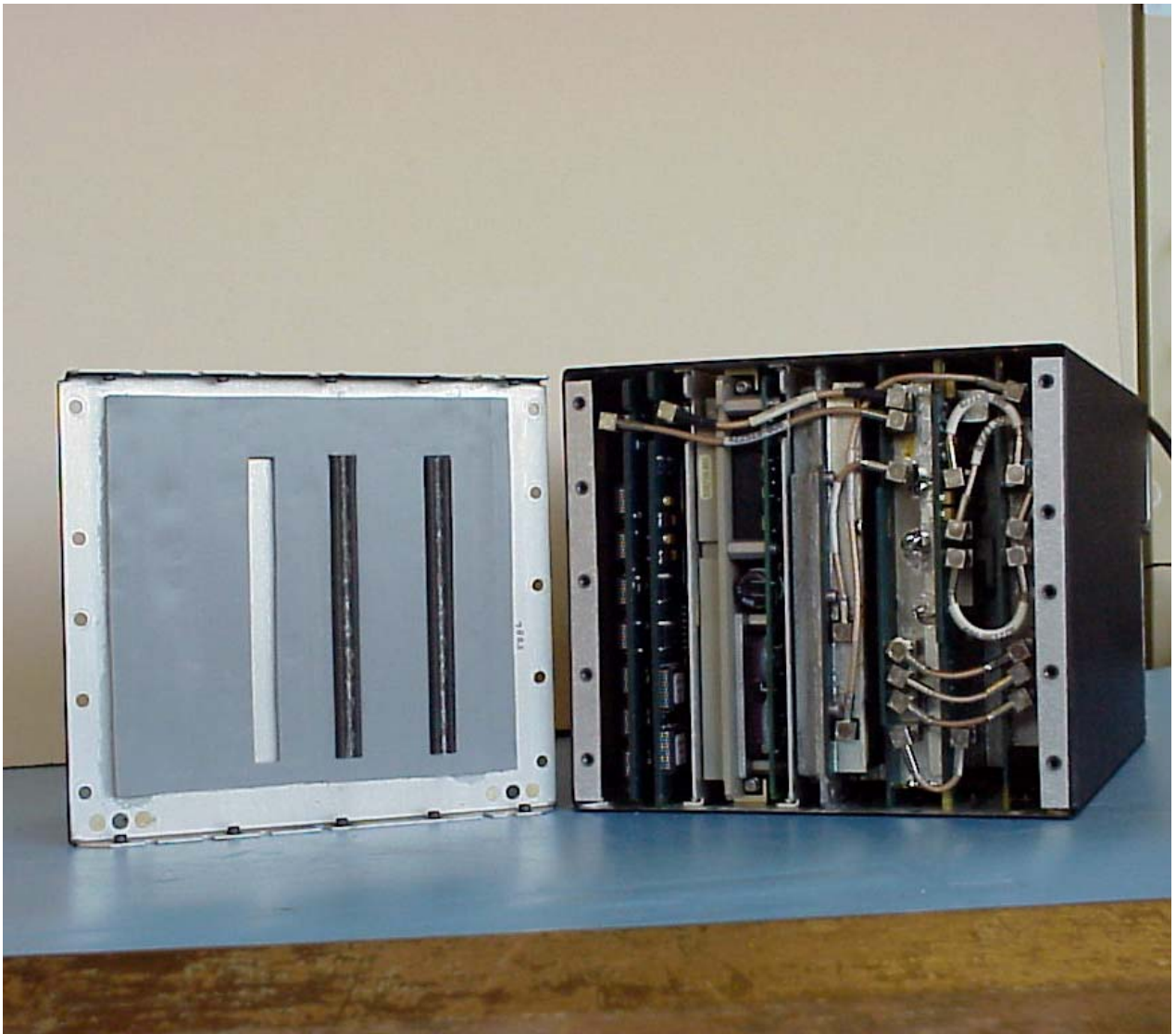
ARTU Front View



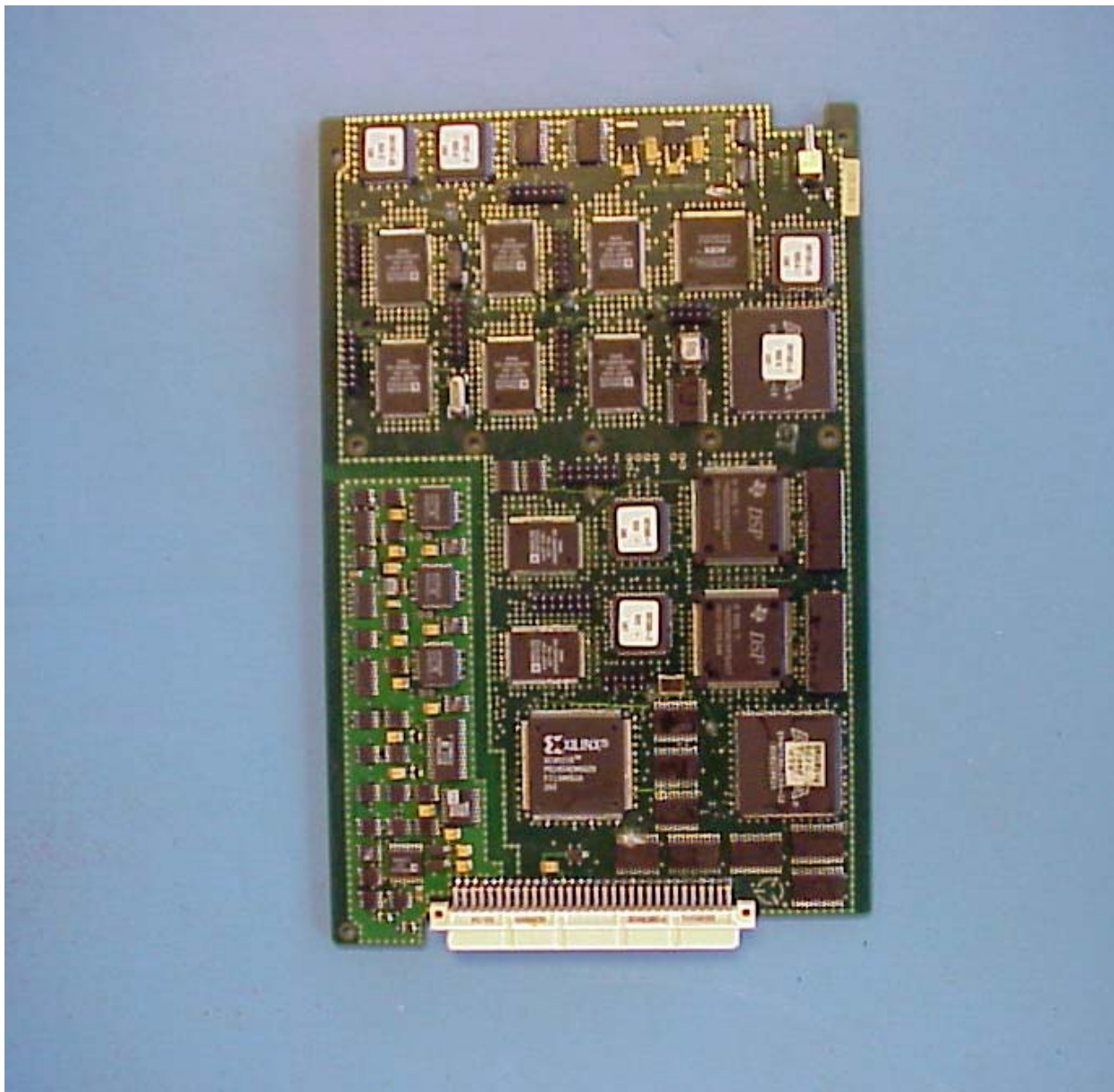
ARTU Rear View



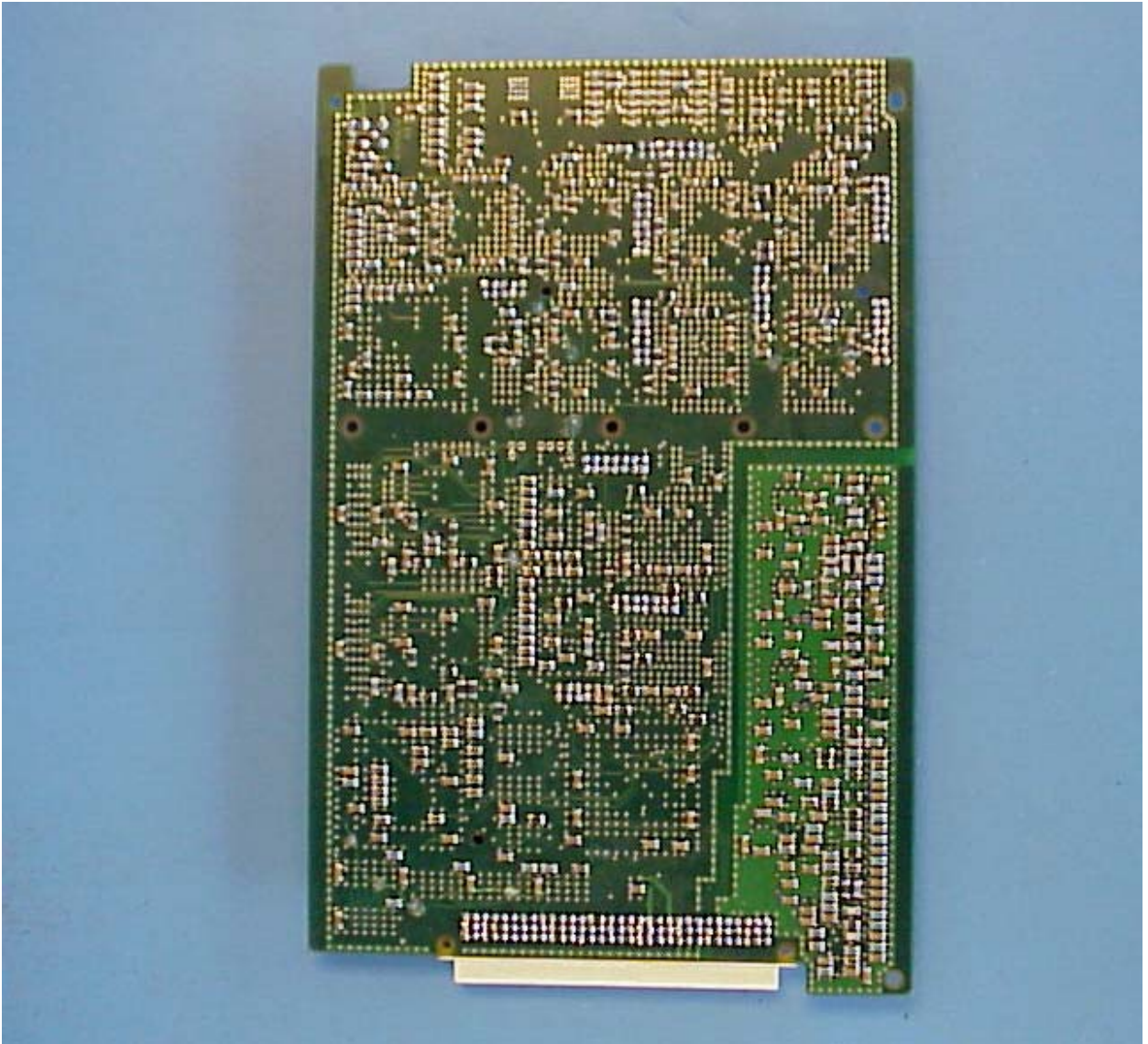
ARTU Front View with Front Cover Open



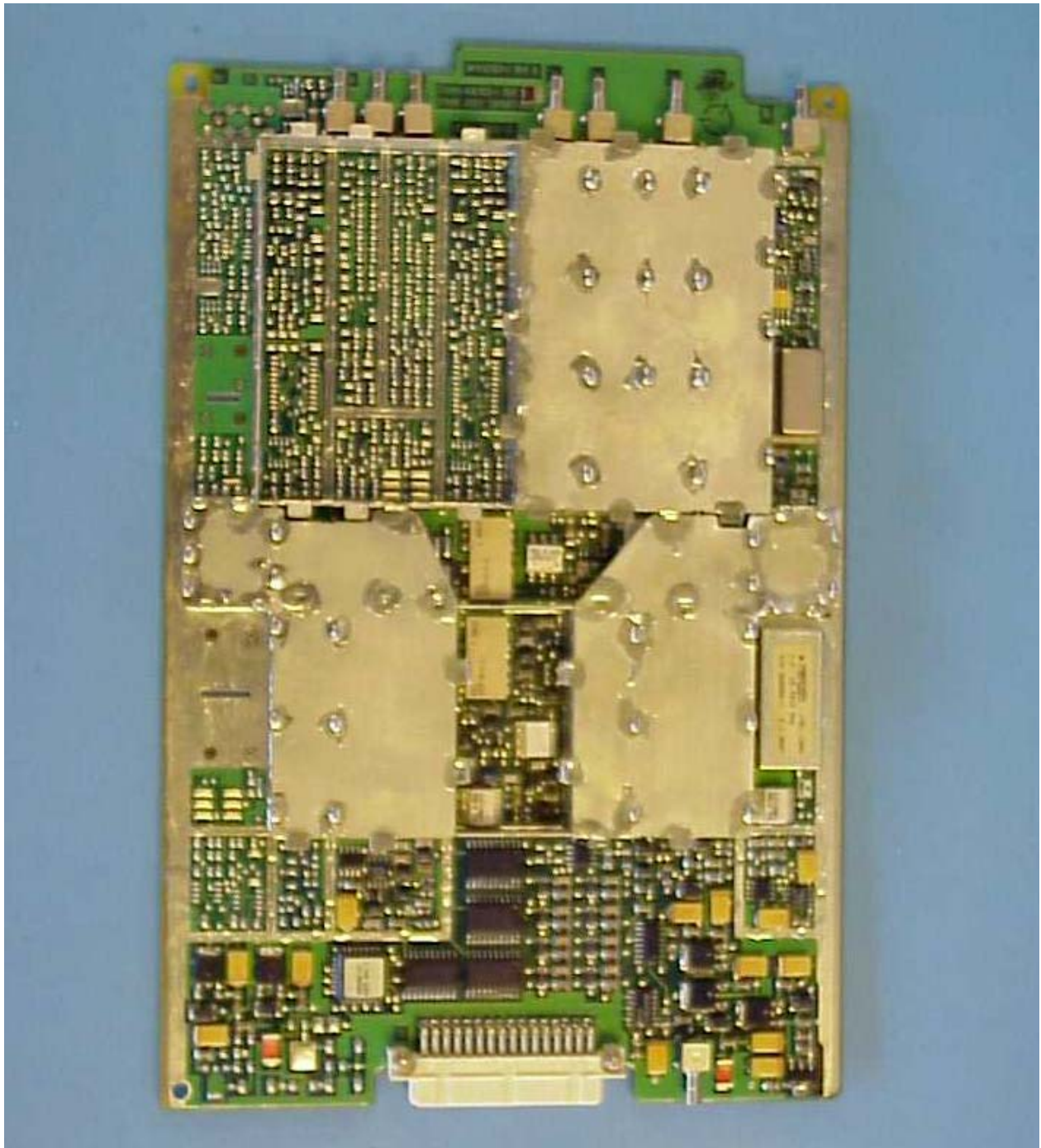
ARTU Rear View with Rear Cover Removed



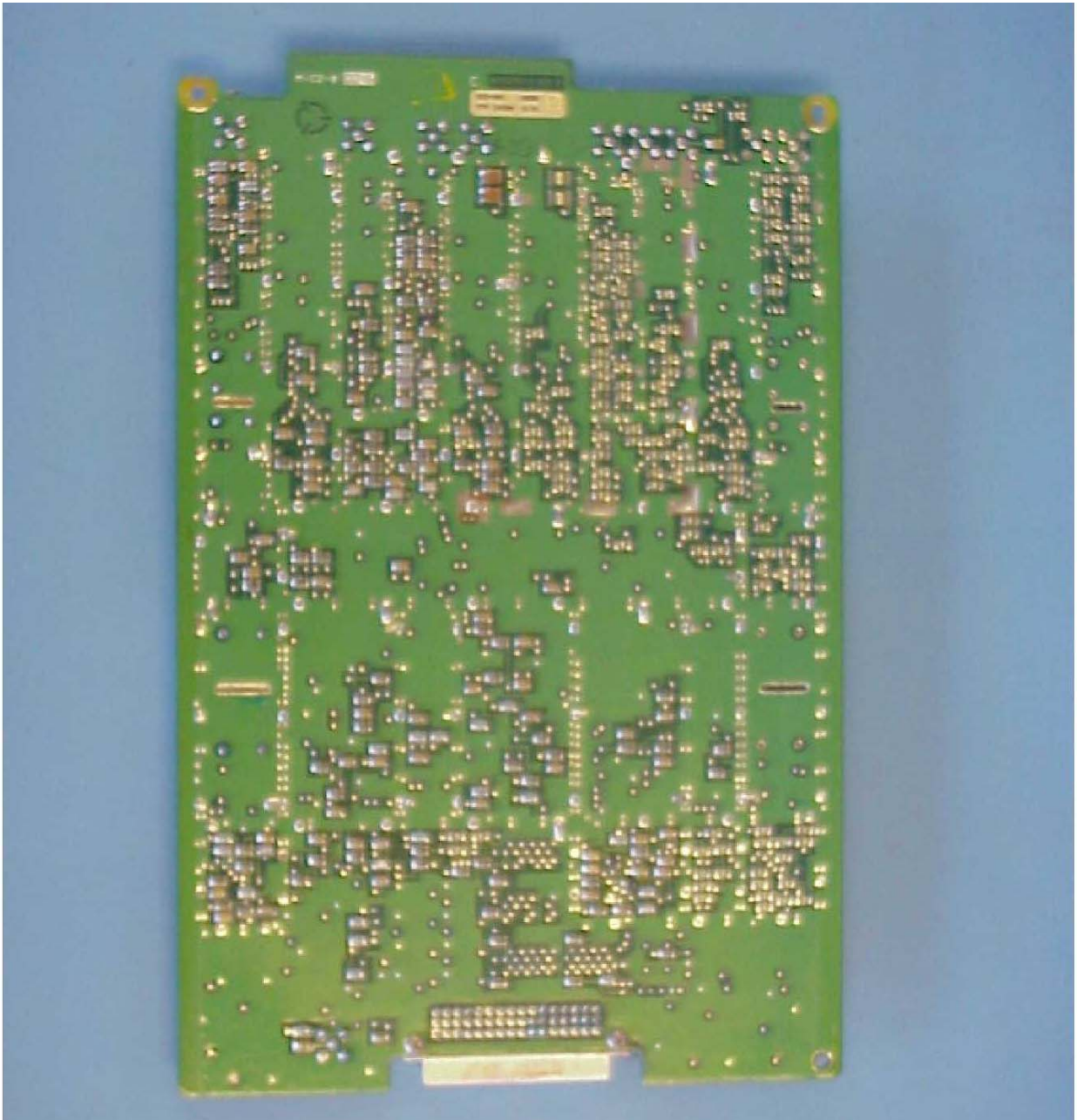
Baseband Signal Processor Circuit Card Assembly (Component Side)



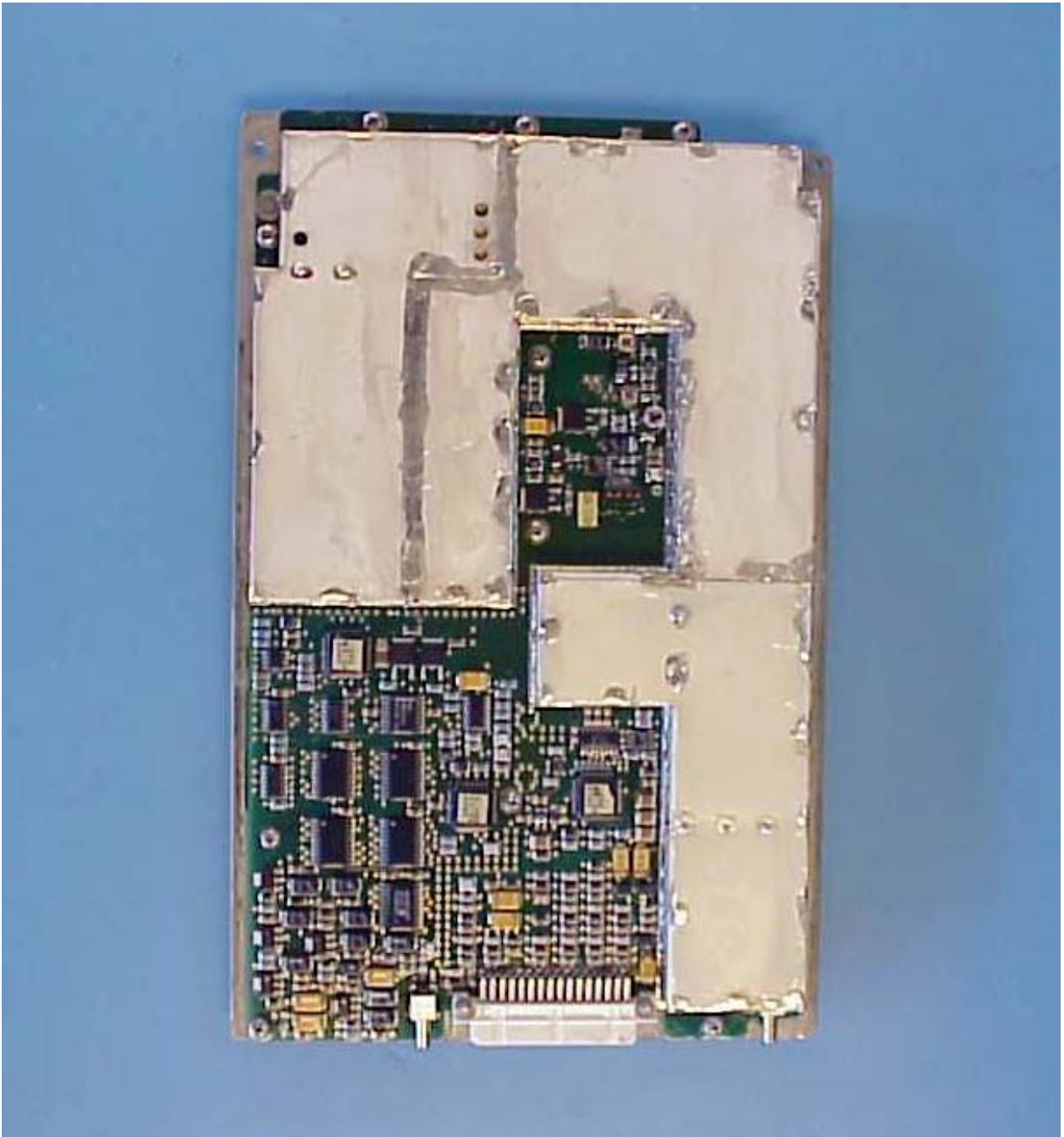
Baseband Signal Processor Circuit Card Assembly (Back Side)



Transmit IF Circuit Card Assembly (Component Side)



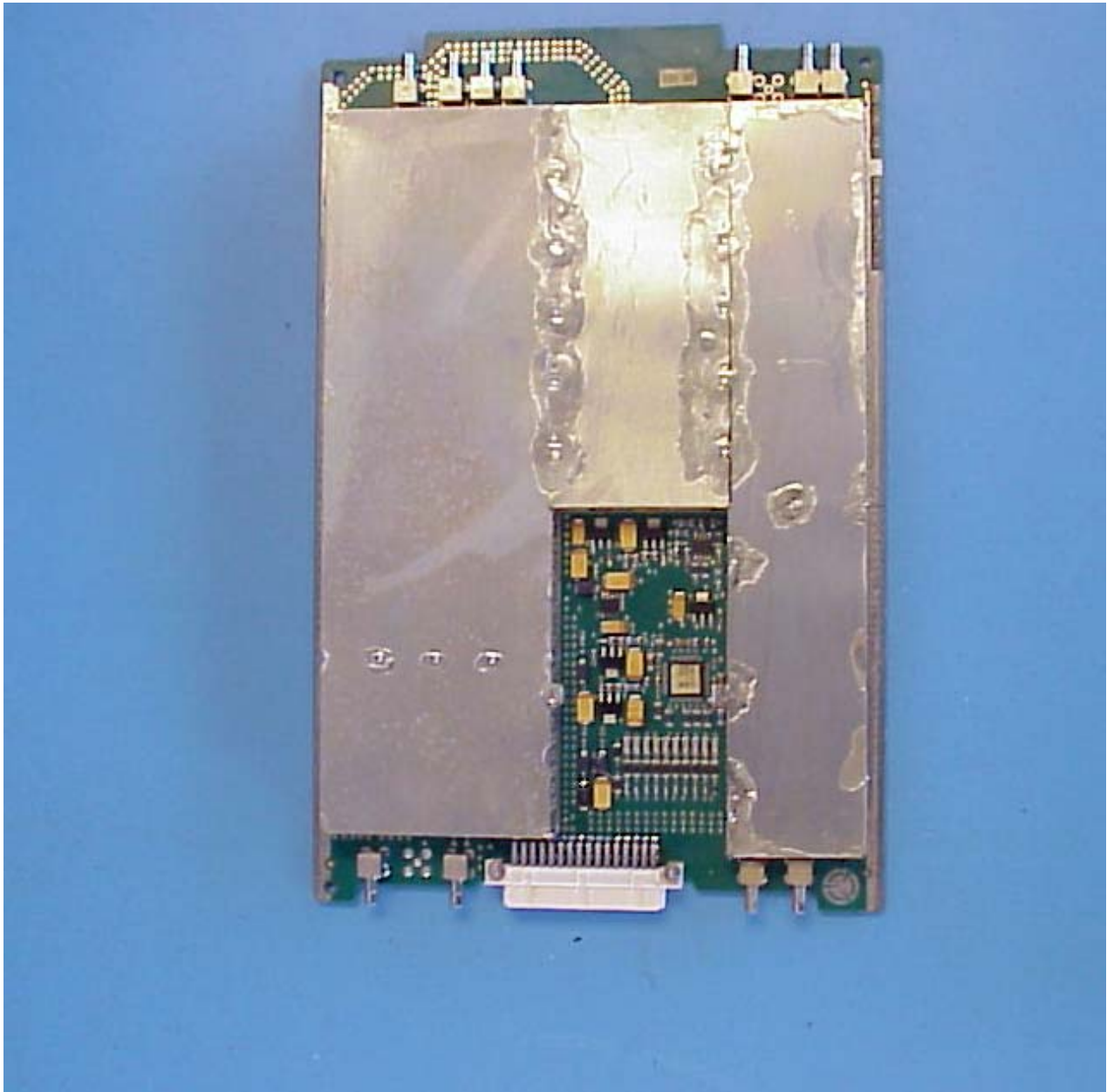
Transmit IF Circuit Card Assembly (Back Side)



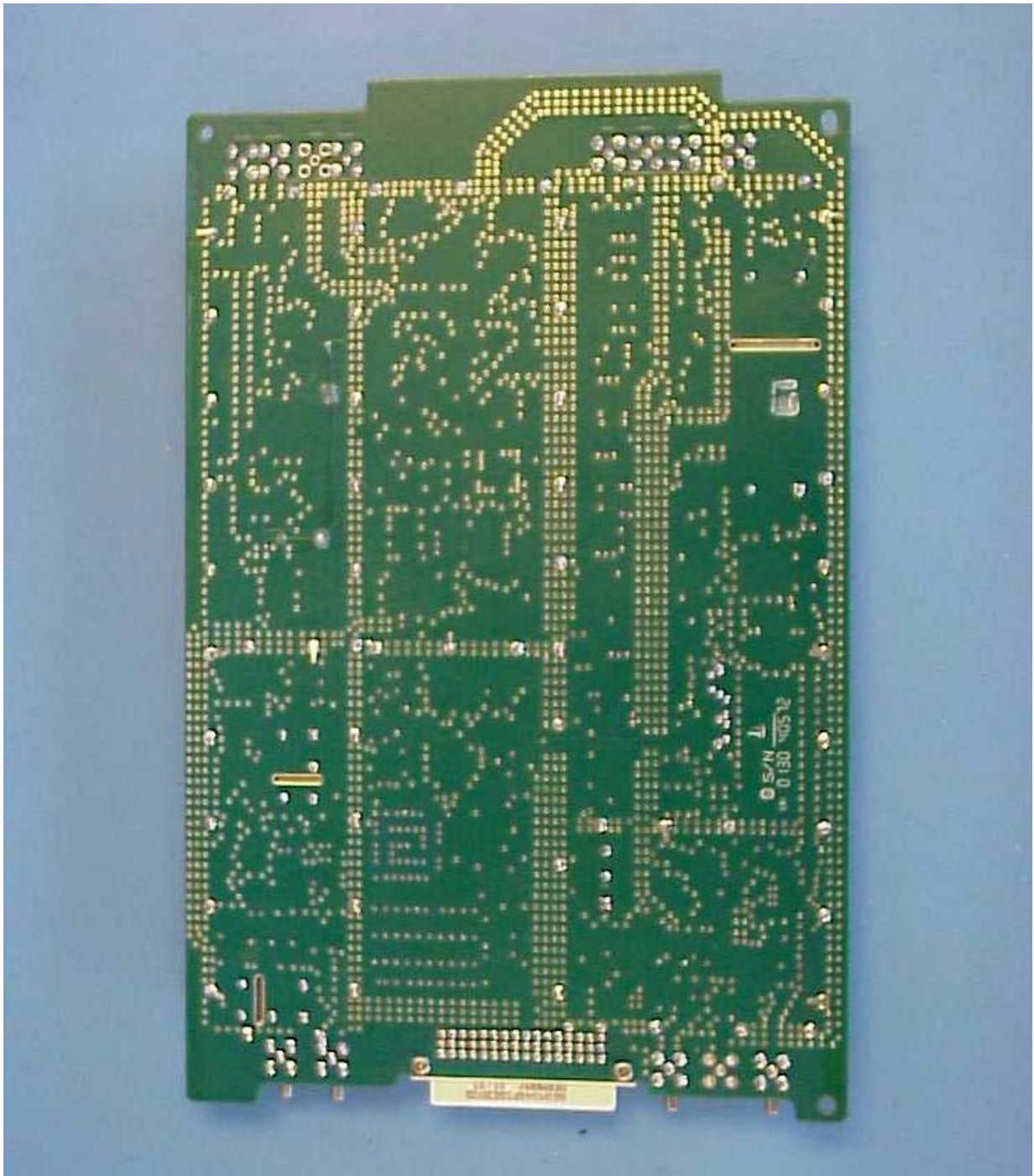
RF Power Amplifier Circuit Card Assembly (Component Side)



RF Power Amplifier Circuit Card Assembly (Back Side)



RF Down Converter Circuit Card Assembly (Component Side)



RF Down Converter Circuit Card Assembly (Back Side)