



360 Herndon Parkway
Suite 1400
Herndon, VA 20170
<http://www.rheintech.com>

7.0 INTERNAL PHOTOS OF EUT

FIGURE 11: Inside Plastic Bezel





360 Herndon Parkway
Suite 1400
Herndon, VA 20170
<http://www.rheintech.com>

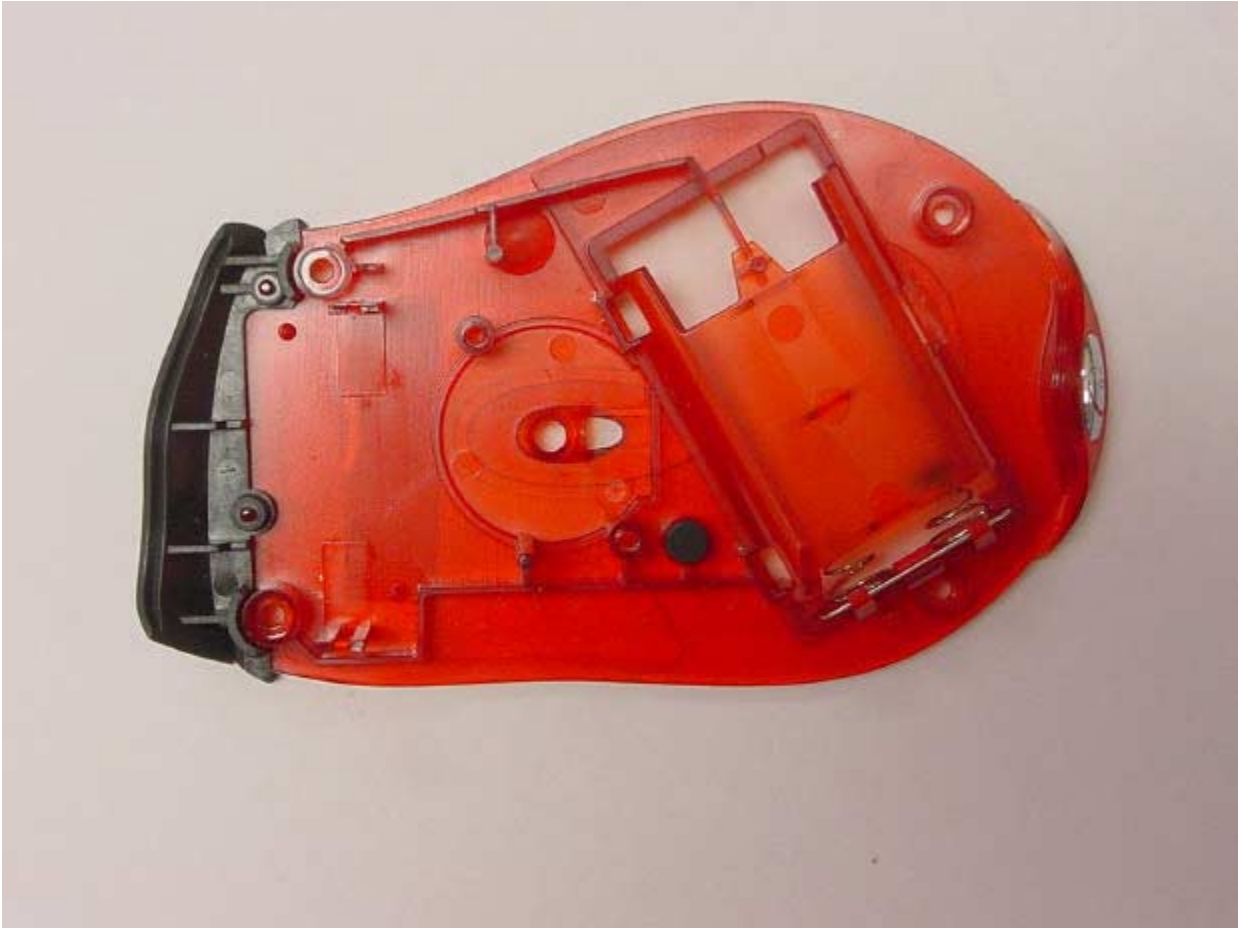
FIGURE 12: Bottom of Plastic Bezel





360 Herndon Parkway
Suite 1400
Herndon, VA 20170
<http://www.rheintech.com>

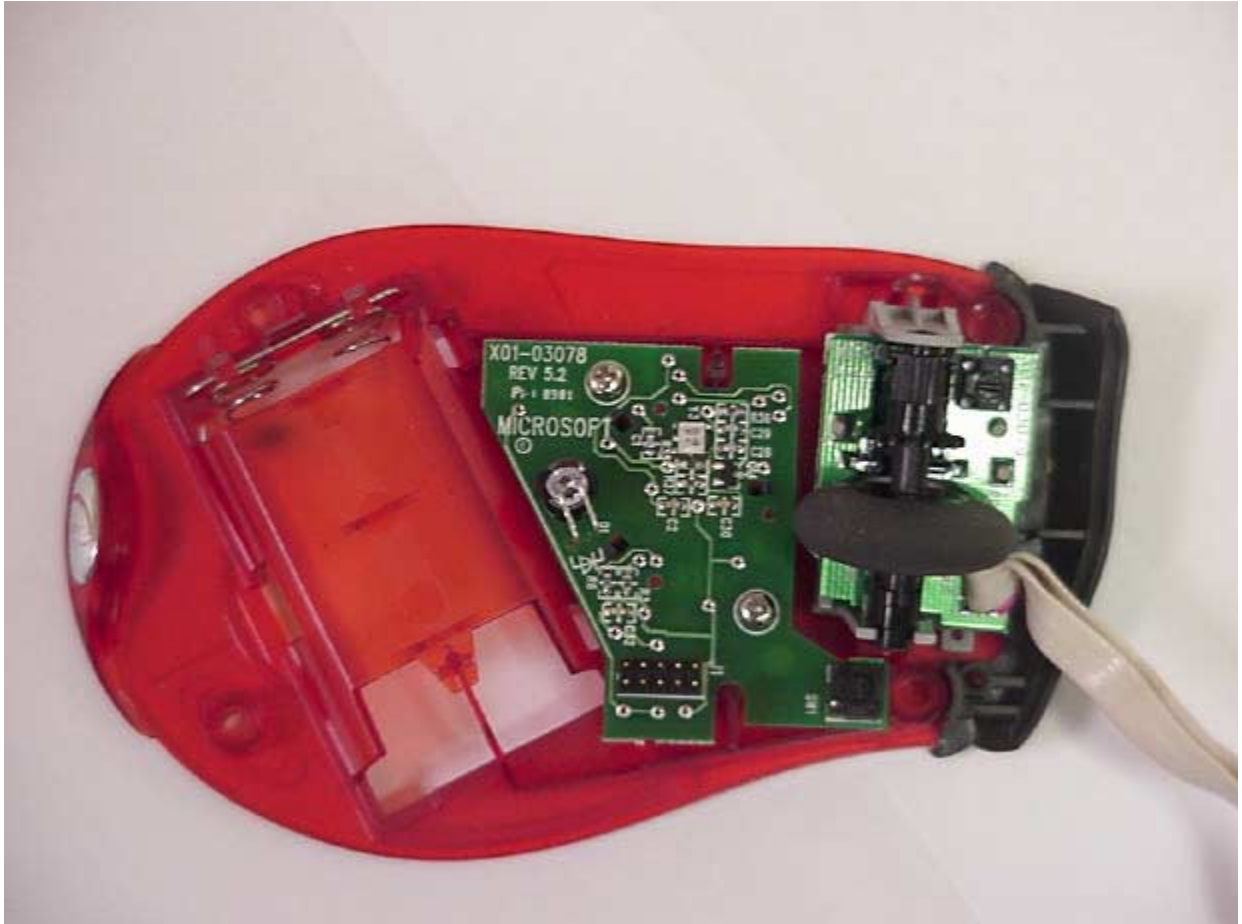
FIGURE 13: Top of Plastic Bezel





360 Herndon Parkway
Suite 1400
Herndon, VA 20170
<http://www.rheintech.com>

FIGURE 14: Top of Plastic Bezel with PCB Boards





360 Herndon Parkway
Suite 1400
Herndon, VA 20170
<http://www.rheintech.com>

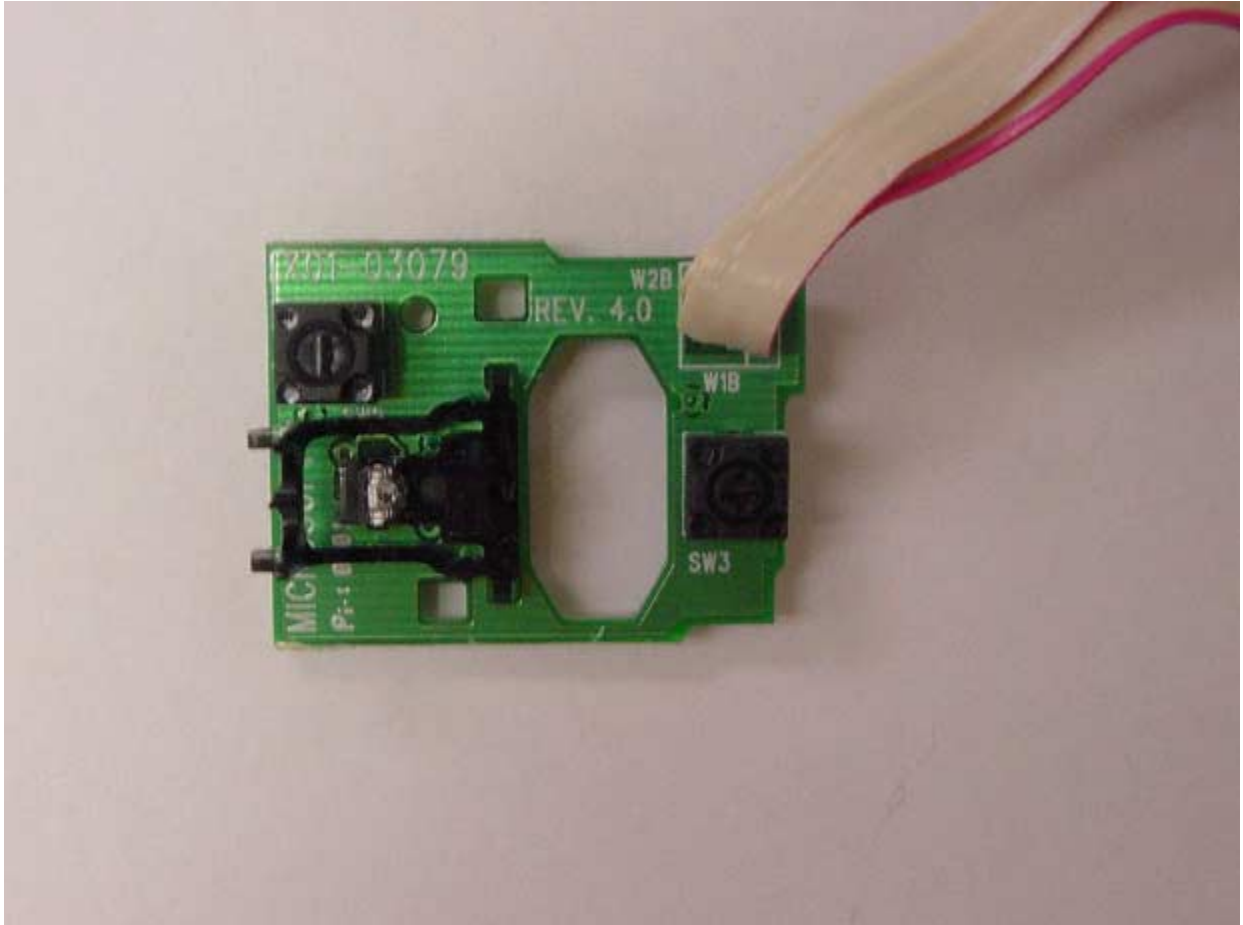
FIGURE 15: Top of Plastic Bezel with One PCB Board





360 Herndon Parkway
Suite 1400
Herndon, VA 20170
<http://www.rheintech.com>

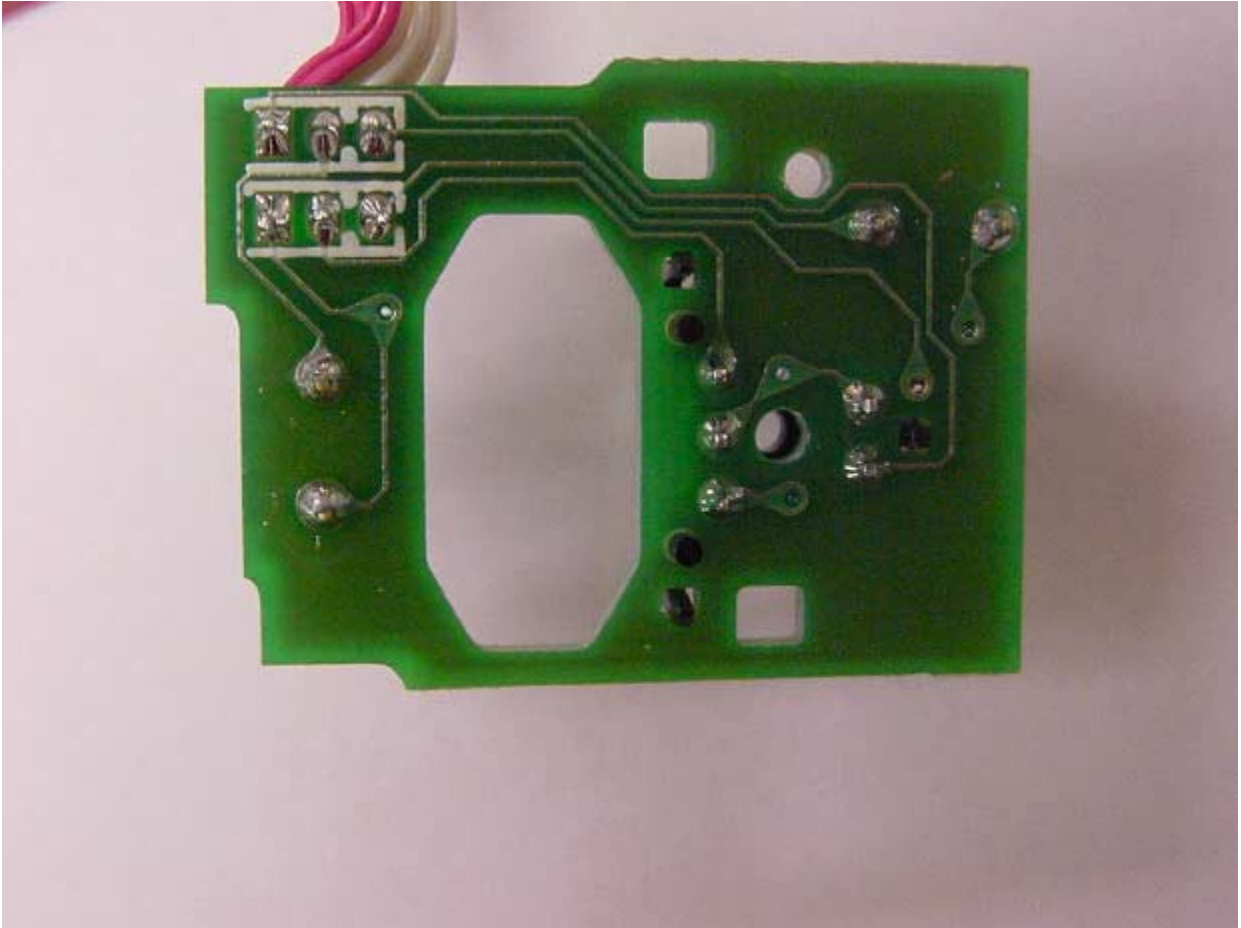
FIGURE 16: Component Side of the Tracker PCB Board





360 Herndon Parkway
Suite 1400
Herndon, VA 20170
<http://www.rheintech.com>

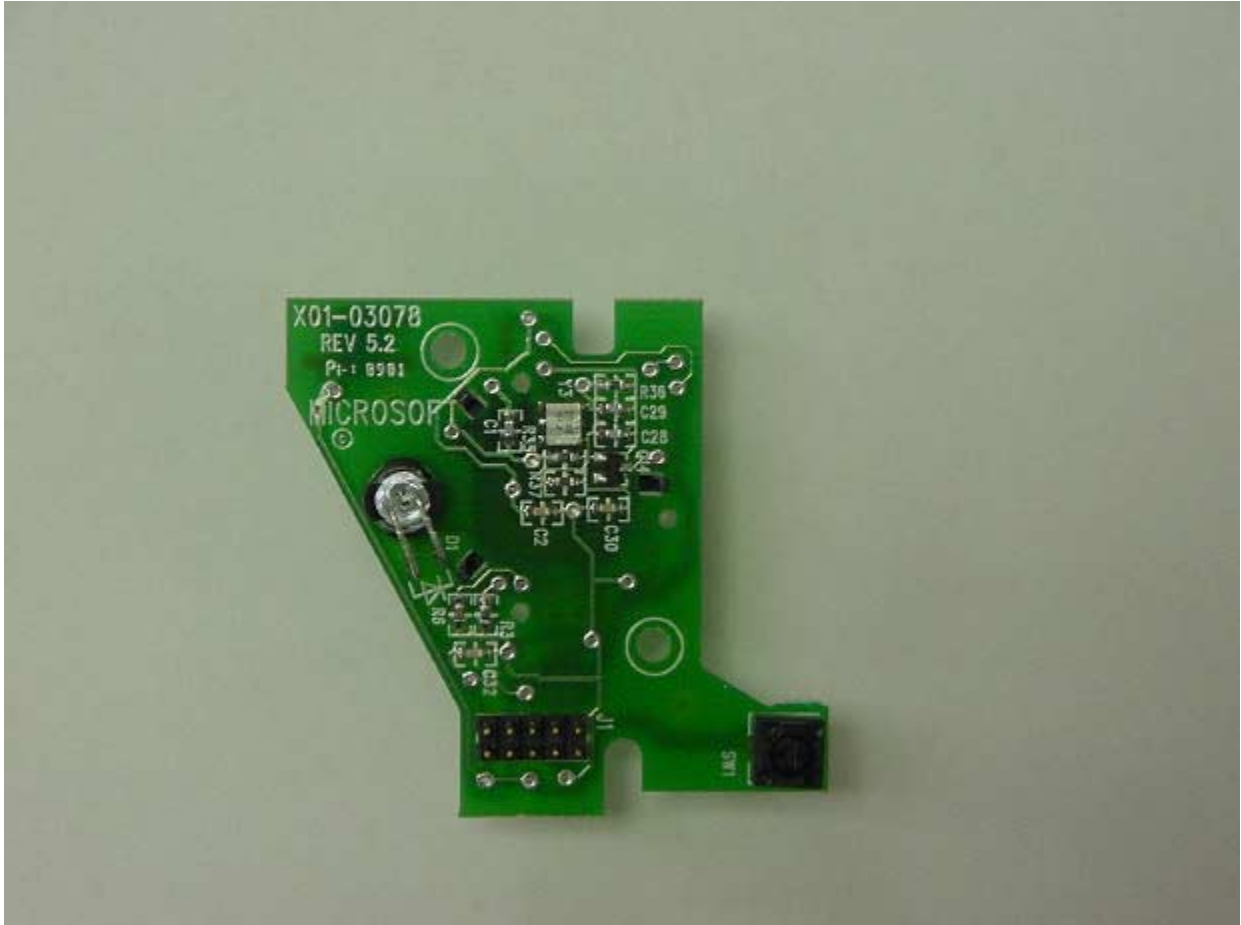
FIGURE 17: Solder Side of the Tracker PCB Board





360 Herndon Parkway
Suite 1400
Herndon, VA 20170
<http://www.rheintech.com>

FIGURE 18: Component Side of the Optic PCB Board





360 Herndon Parkway
Suite 1400
Herndon, VA 20170
<http://www.rheintech.com>

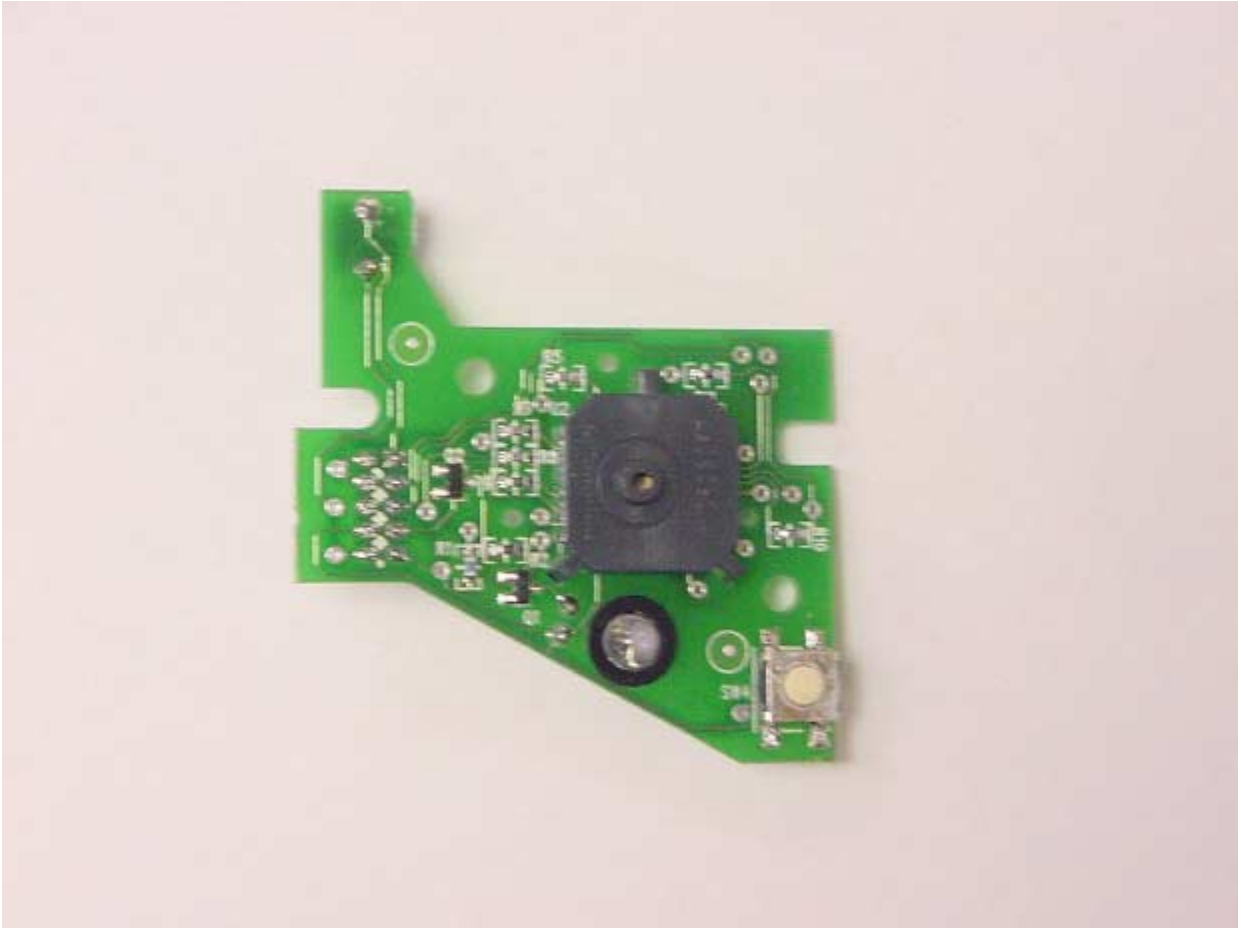
FIGURE 19: Solder Side of the Optic PCB Board





360 Herndon Parkway
Suite 1400
Herndon, VA 20170
<http://www.rheintech.com>

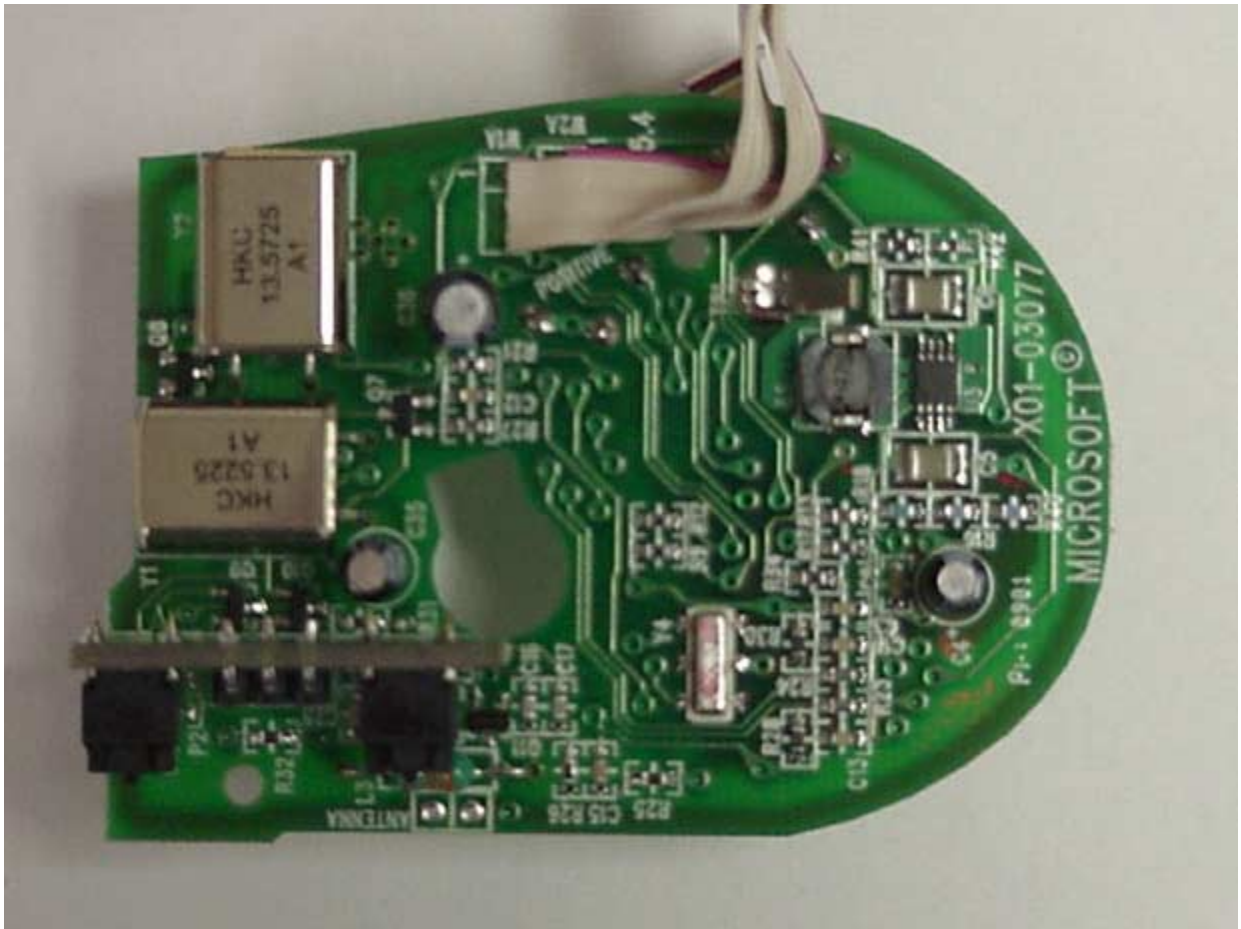
FIGURE 20: Solder Side of the Optic PCB Board without Lens





360 Herndon Parkway
Suite 1400
Herndon, VA 20170
<http://www.rheintech.com>

FIGURE 21: Top of Main PCB Board





360 Herndon Parkway
Suite 1400
Herndon, VA 20170
<http://www.rheintech.com>

FIGURE 22: Bottom of Main PCB Board





360 Herndon Parkway
Suite 1400
Herndon, VA 20170
<http://www.rheintech.com>

FIGURE 23: Inside Top of Receiver Bezel





360 Herndon Parkway
Suite 1400
Herndon, VA 20170
<http://www.rheintech.com>

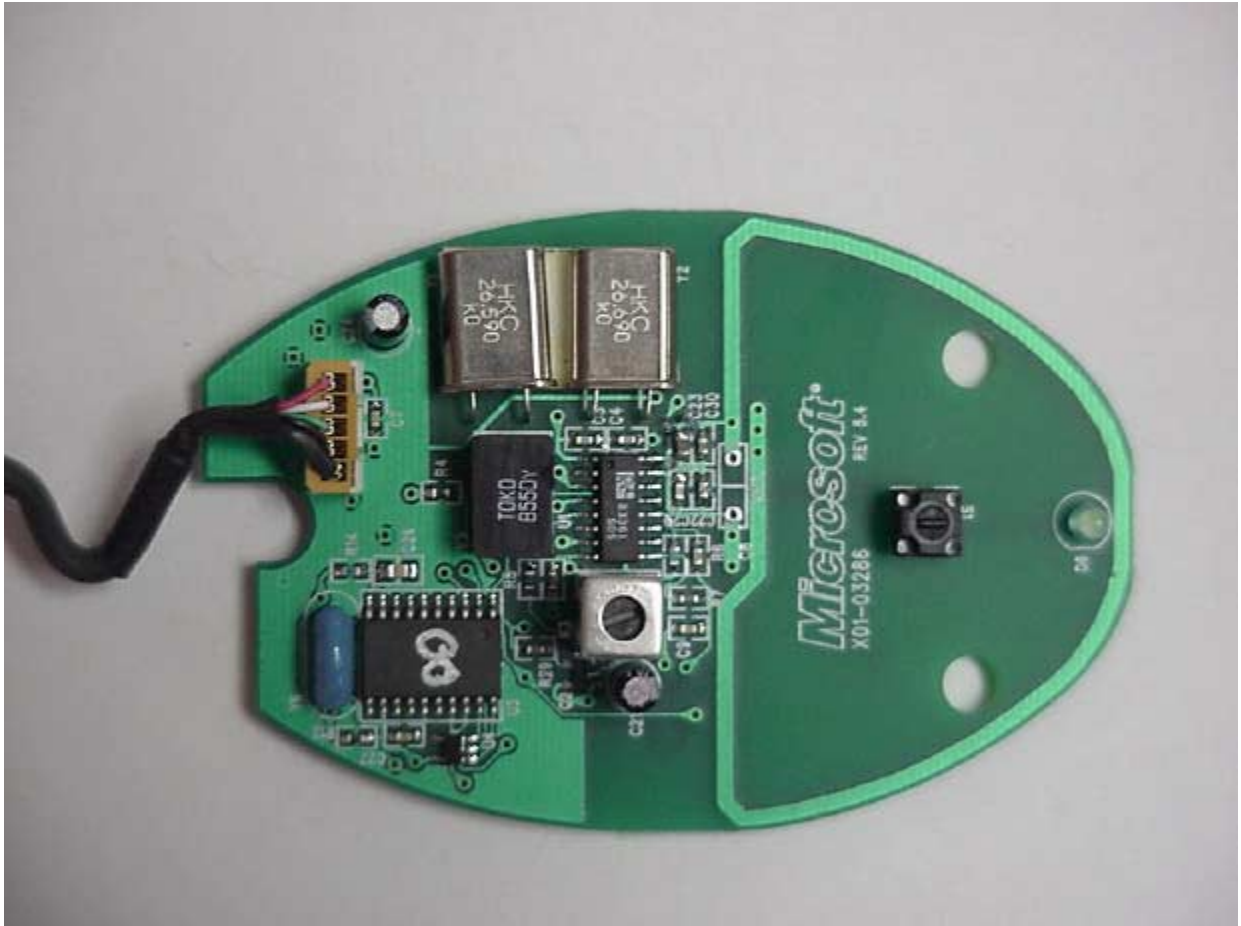
FIGURE 24: Inside Bottom of Receiver Bezel





360 Herndon Parkway
Suite 1400
Herndon, VA 20170
<http://www.rheintech.com>

FIGURE 25: Component Side of Receiver PCB





360 Herndon Parkway
Suite 1400
Herndon, VA 20170
<http://www.rheintech.com>

FIGURE 26: Solder Side of Receiver PCB

