

2010-03-15 09:56:10 CR5000 828-2183-001 B hwcarter

87

7

6

5

4

3

2

1

NOTES:

1. "T" DESIGNATES CIRCUIT CARD ASSEMBLY TOP SURFACE.

2. REFERENCE DESIGNATORS USED IN LIEU OF ITEM NUMBERS.

3. PARENTHETICAL INFORMATION IS FOR REFERENCE ONLY.

4. BALLOON IDENTIFICATION DENOTES: ITEM NUMBER - QUANTITY.

5. UNLESS OTHERWISE SPECIFIED, ASSEMBLY SHALL BE IN ACCORDANCE WITH ITEM 3.

6. Z MAX DIMENSIONS, EXCLUDING CONNECTORS, PIN FIELDS, AND MECHANICAL HARDWARE:

Z TOP SHALL BE 1.850

Z BOTTOM SHALL BE .080

MAXIMUM LEAD PROTRUSION SHALL BE .016

7. APPLY IDENTIFICATION MARKING IN APPROXIMATE LOCATION SHOWN, IN ACCORDANCE WITH ITEM 4, TYPE 2, CLASS II, USING SILKSCREEN.

8. THIS CIRCUIT CARD ASSEMBLY WILL BE TESTED AT A HIGHER LEVEL.

9. CONFORMAL COAT BOTTOM SIDE ONLY USING ITEM 5 IN ACCORDANCE WITH ITEM 6. HATCHED AREAS INDICATED SHALL BE FREE OF CONFORMAL COATING, AND SHALL APPROXIMATE SOLDER MASK CLEARANCE ON FAB BOARD.

10. ITEM 7 MAY BE UTILIZED ON THIS ASSEMBLY.

11. DIMENSIONING AND TOLERANCING SHALL BE INTERPRETED IN ACCORDANCE WITH ASME Y14.5M-1994. DIMENSIONS AND TOLERANCES ARE IN INCHES.

12. ITEM 9 (P1) SHALL BE EXEMPT FROM LEAD PROTRUSION REQUIREMENT AND LEADS SHALL BE TRIMMED FLUSH TO .008 MAX PROTRUSION.

13. PRIOR TO INSTALLING C1 AND C8, PLACE TWO LAYERS OF TAPE (ITEM 10) OVER P1 LEADS. TRIM TAPE AT CIRCUIT CARD EDGE. ITEM 8 (C1-C8) TO BE MOUNTED AS FLUSH TO ITEM 1 AS POSSIBLE. ITEM 8 (C1-C8) LEADS SHALL BE TRIMMED FLUSH TO .008 MAX PROTRUSION WITH BOTTOM SIDE OF ITEM 1 AFTER SOLDERING 16 PLACES.

REVISION HISTORY

REV	DESCRIPTION	DATE	APPROVED
B	ECO-0213917	2009-03-15	B.A.

CAD MAINTAINED. CHANGES SHALL BE INCORPORATED BY THE DESIGN ACTIVITY

AR	10	014-3007-070	TAPE			13	
1	9	859-4830-050	CONNECTOR, PCB, HEADER, 26 CONTACTS			12	P1
8	8	183-1695-030	CAPACITOR, FIXED, 8200UF, 50V			13	C1-8
REF	7	580-6520-001	STANDARD ASSY PRACTICES			10	
REF	6	580-5458-001	CONFORMAL COATING, ACRYLIC-BASED, APPLIC			9	
AR	5	821-0650-020	INSULATING COMPOUND, ACRYLIC			9	
REF	4	580-1497-001	PROCESS, MARKING IDENT			7	
REF	3	523-0778764	RC WORKMANSHIP STD MANUAL			5	
REF	2	828-7183-001	SCHEMATIC DIAGRAM				
1	1	826-0004-356	PRINTED WIRING BOARD				
QTY	ITEM NO	PART OR IDENTIFYING NO	NOMENCLATURE OR DESCRIPTION	DOCUMENT NO	CAGEC	NOTES	REF DESIGNATOR

PARTS LIST

THE TECHNICAL DATA IN THIS DOCUMENT (OR FILE) IS CONTROLLED FOR EXPORT UNDER THE EXPORT ADMINISTRATION REGULATIONS (EAR), 15 CFR PARTS 730-774. VIOLATIONS OF THESE EXPORT LAWS MAY BE SUBJECT TO FINES AND PENALTIES UNDER THE EXPORT ADMINISTRATION ACT.

NOTICE: THE CONTENTS OF THIS DOCUMENT ARE PROPRIETARY TO ROCKWELL COLLINS, INC. AND SHALL NOT BE DISCLOSED, DISSEMINATED, COPIED, OR USED EXCEPT FOR PURPOSES EXPRESSLY AUTHORIZED IN WRITING BY ROCKWELL COLLINS, INC.

COPYRIGHT 2010 ROCKWELL COLLINS, INC. ALL RIGHTS RESERVED

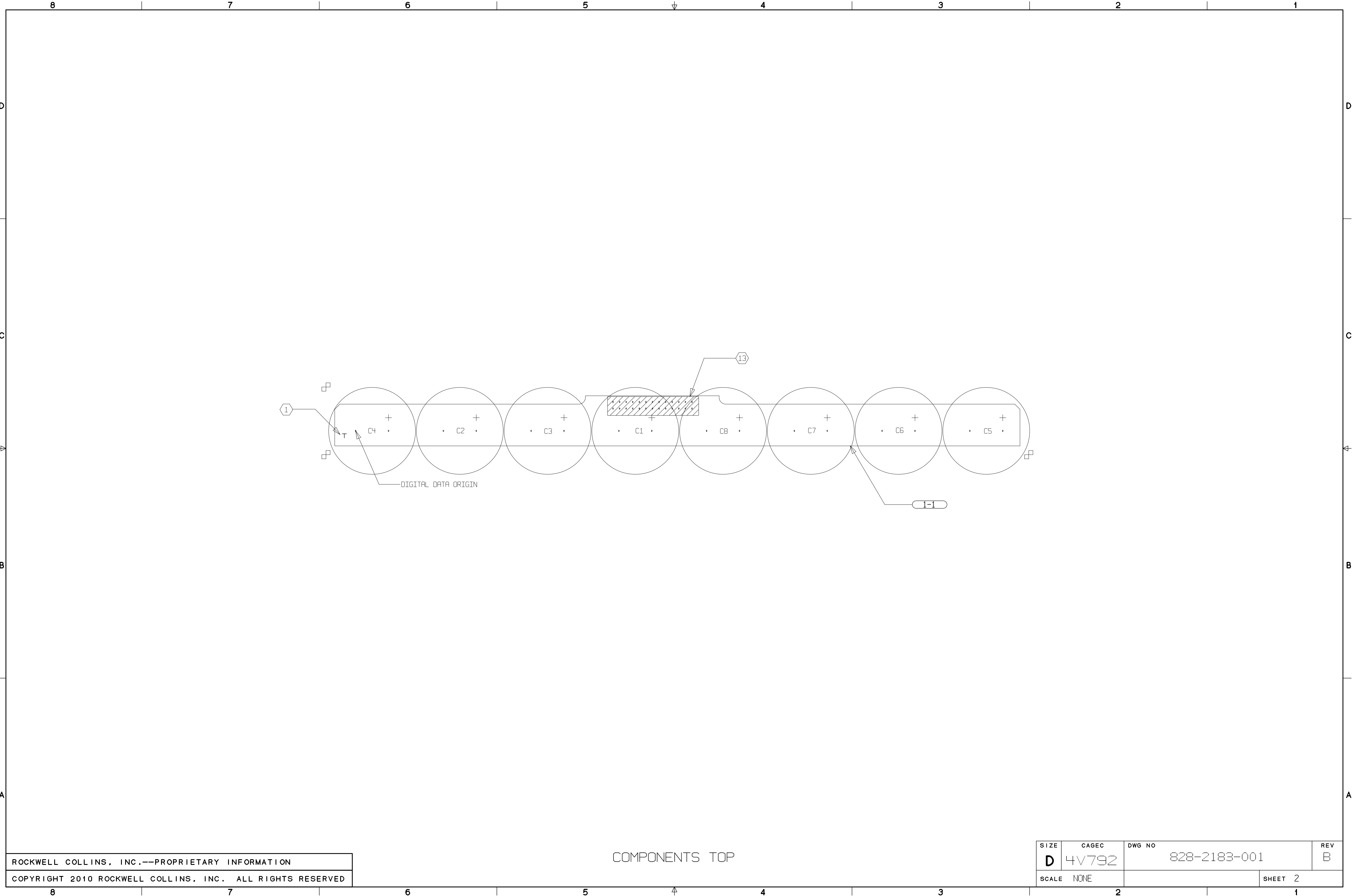
CAUTION

CONTAINS PARTS AND ASSEMBLIES SUSCEPTIBLE TO DAMAGE BY ELECTROSTATIC DISCHARGE (ESD)

		CONTRACT NO	ROCKWELL COLLINS			
		PREP M.JOHNSON 2009-01-22				
		CHK S.SOLYNTJES 2009-01-22				
983-9370-001	VHF-2200	APVD M.MCADAMS 2009-01-22				
NEXT ASSY	USED ON	ALL SHEETS ARE THE SAME REVISION STATUS	SIZE D	CAGEC 4V792	DWG NO 828-2183-001	REV B
APPLICATION		THIRD ANGLE PROJECTION	SCALE NONE	SHEET 1 OF 3		

STATE 3 - ENGINEERING RELEASE 2010-03-17

2010-03-15 12:49:28 CRS000 828-2183-001 B sbanda

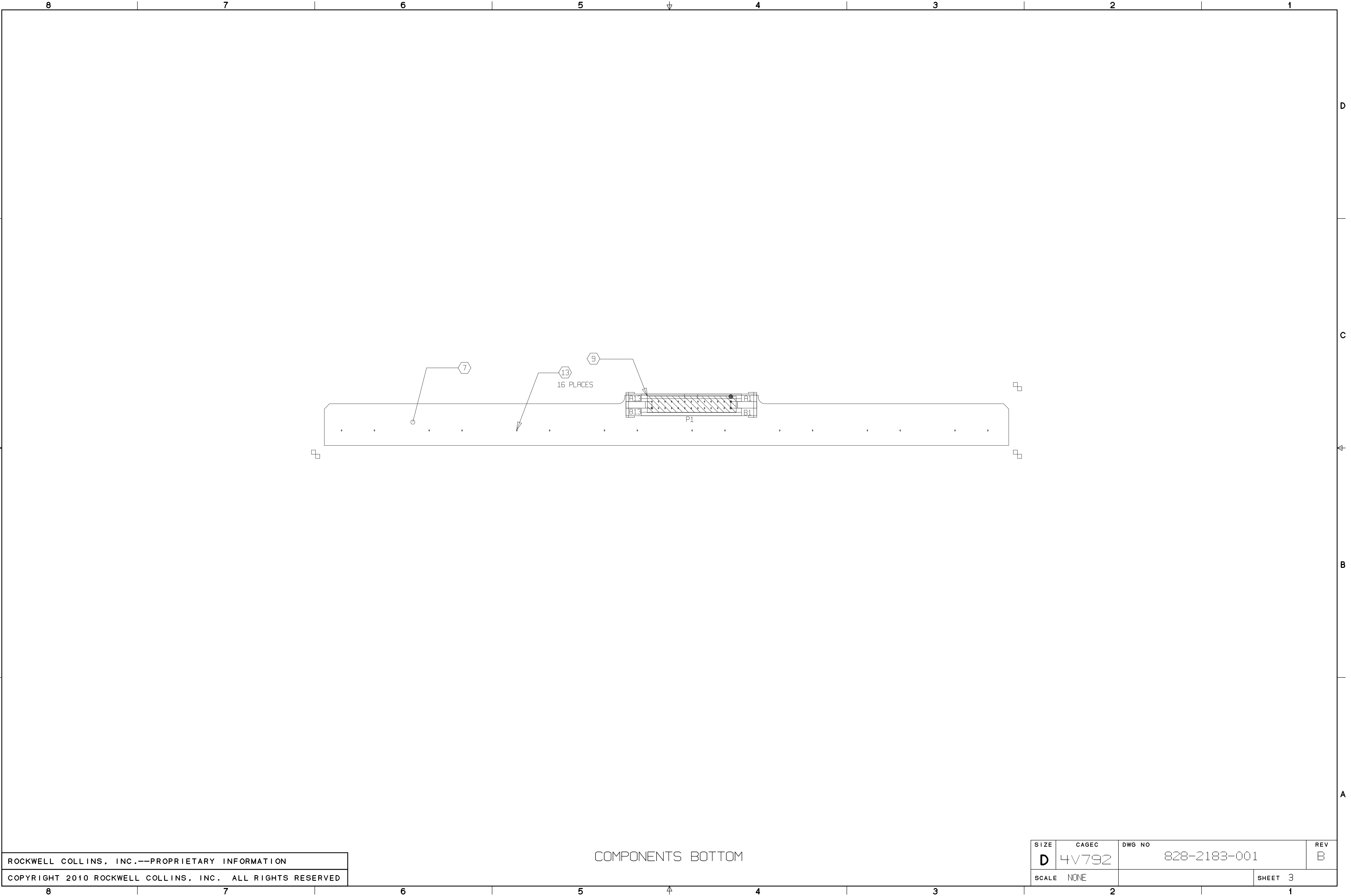


ROCKWELL COLLINS, INC.--PROPRIETARY INFORMATION
COPYRIGHT 2010 ROCKWELL COLLINS, INC. ALL RIGHTS RESERVED

COMPONENTS TOP

SIZE	CAGEC	DWG NO	REV
D	4V792	828-2183-001	B
SCALE	NONE	SHEET 2	

2010-03-15 12:49:28 CRS000 828-2183-001 B sbanda



ROCKWELL COLLINS, INC.--PROPRIETARY INFORMATION
COPYRIGHT 2010 ROCKWELL COLLINS, INC. ALL RIGHTS RESERVED

COMPONENTS BOTTOM

SIZE	CAGEC	DWG NO	REV
D	4V792	828-2183-001	B
SCALE	NONE	SHEET 3	