

## Product specification

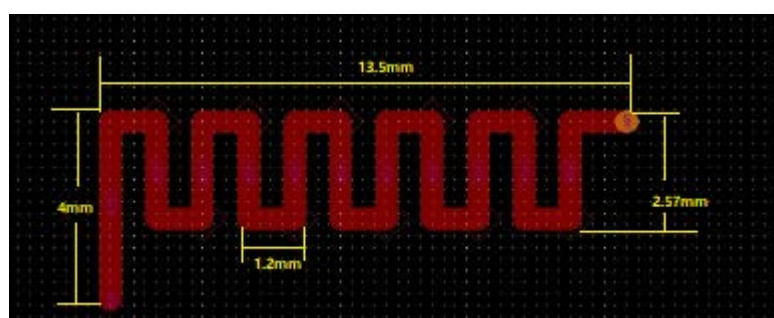
### Quick Reference Date

	Antenna module on the system board	
Model Name	C19 2.4G ANT	
Frequenc Range	2402 ~ 2480MHz	
Ant. Port Input Pwr. (dBm)	0 (Typ. BT class 2 output power)	
Tot. Rad. Pwr. (dBm)	-1.2 (Input pwr – loss pwr)	
Peak EIRP(dBm)	0.8	
Directivity (dBi)	1 (all direction antenna)	
Efficiency (dB)	6 0.2 %	
Gain (dBi)	1.9	
Maximum Power (dBm)	1.7 (XY-plane)	
Minimum Power (dBm)	-4(XY-plane)	
Avg. Power (dBm)	-0.5(XY-plane)	
Issued by: SHENZHEN FEIMIN TECHNOLOGY CO.,LTD		
Input Impedence(ohm)	50	
Polarization Type	V ertical & Horizontal	
V . S .W .R	< 1.4	

Manufacture: Dongguan KWD Technology Co.,Ltd

All the technical data and information contained herein are subject to change without prior notice

### Antenna Layout & module on the system board

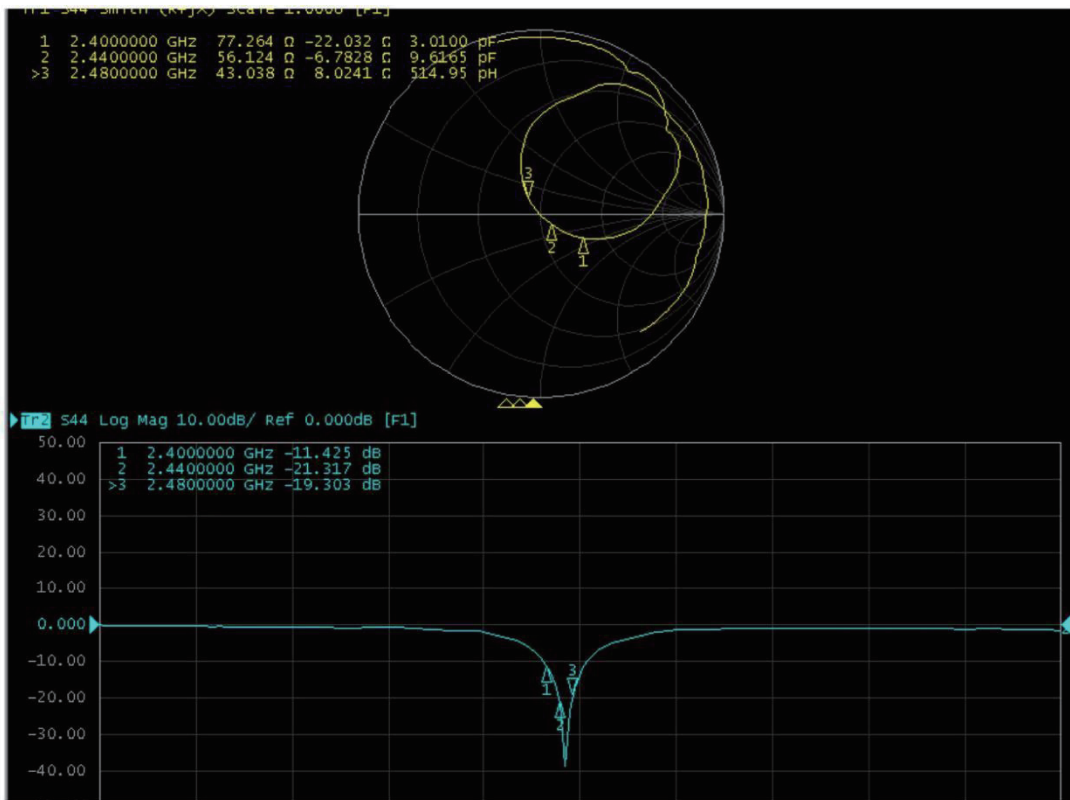


### Antenna Gain

Gain Table

Unit in dBi @2.44GHz	XY-plane		XZ-plane		YZ-plane		Efficiency
	Peak	Avg.	Peak	Avg.	Peak	Avg.	
Module Board	1.2	-0.5	1.9	-3.6	1.1	-3.0	6 0.2 %

# Return Loss

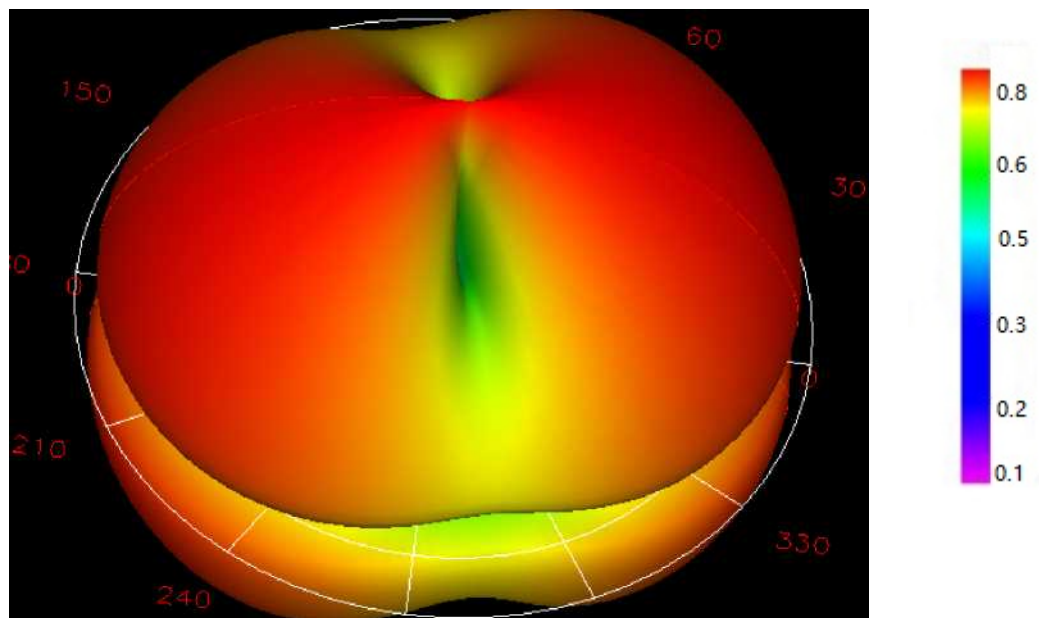


### 3. Antenna Radiation Pattern

Radiation pattern@2.402GHZ

Total Average Gain: —0.475dbi

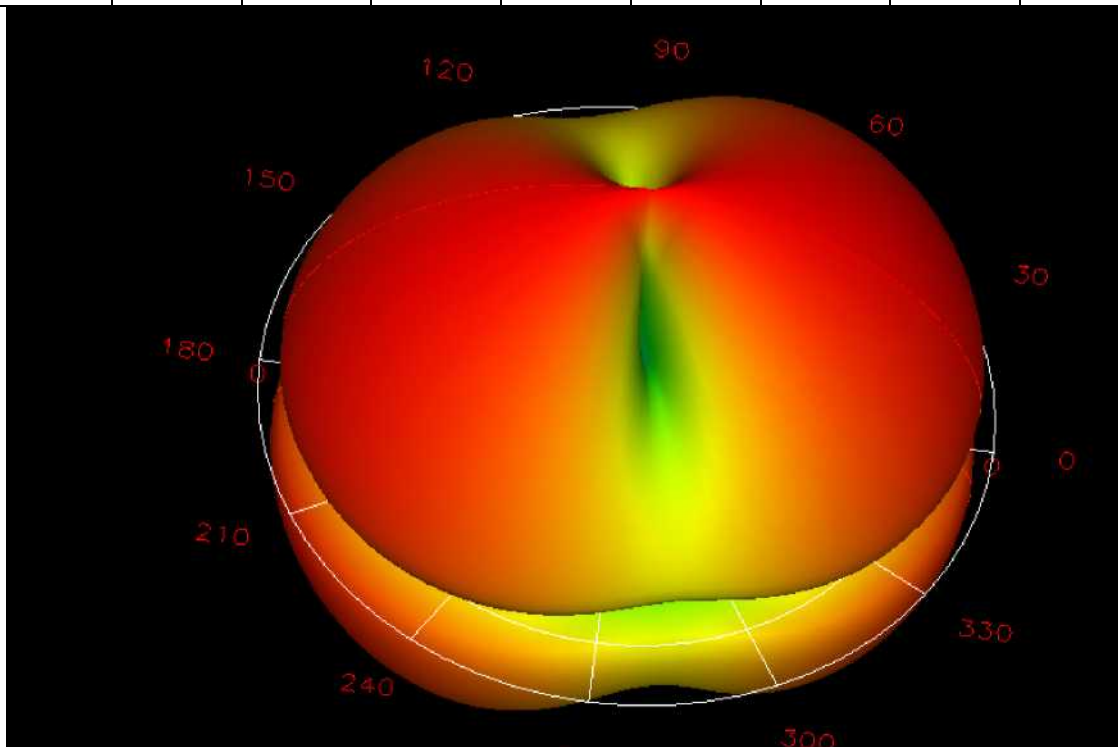
\ Phi	0	45	90	135	180	235	270	315
Gain	0.1	0.3	0.8	0.5	0.2	0.6	0.8	0.5



Radiation pattern@2.441GHZ

Total Average Gain: -0.275dbi

\ Phi	0	45	90	135	180	235	270	315
Gain	0	1.2	0.6	1.2	-0.1	1.9	-0.6	-0.4



### Radiation pattern@2.480GHZ

Total Average Gain: -0.237dbi

Phi	0	45	90	135	180	235	270	315
Gain	0	0.8	-0.2	-0.5	0	1.2	-0.6	-0.2

