

Preparations

Check whether the wireless router is in normal use, and then connect the mobile phone to the WIFI network. If it is a dual-band router, please connect to a 2.4G WIFI network.

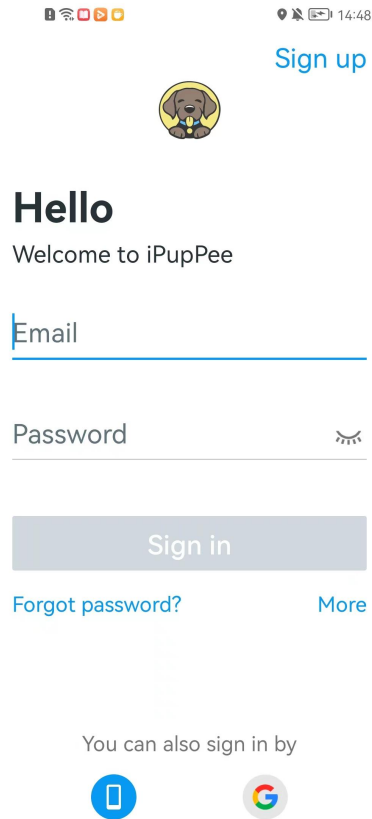
Install the test APP

1. Please scan below QR Code to download “iPupPee”to your Android device.

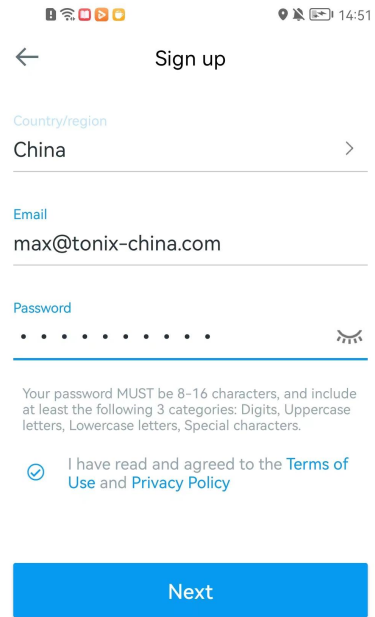


2. Open the “ipupPee”APP and register an account using your email. Tips: your password must be 8-16 characters, and at least contain the following three categories: numbers. Uppercase letters. Lowercase letters, special characters.

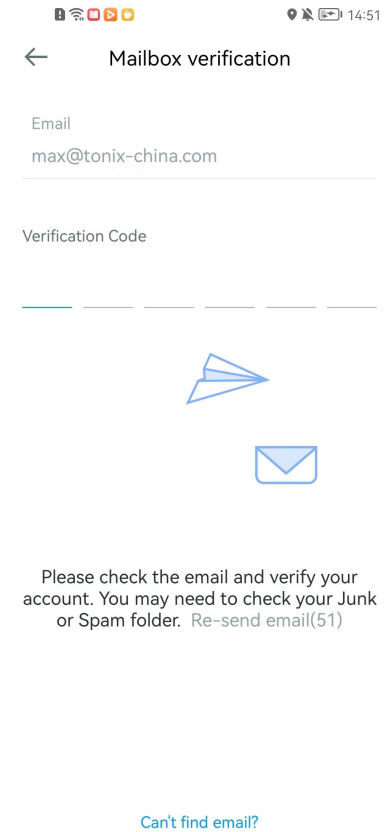
The device is placed from a position close to the router.



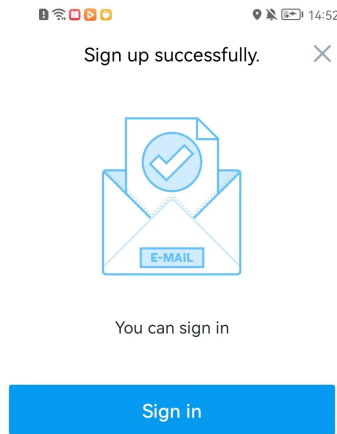
1、 Enter your email address to register



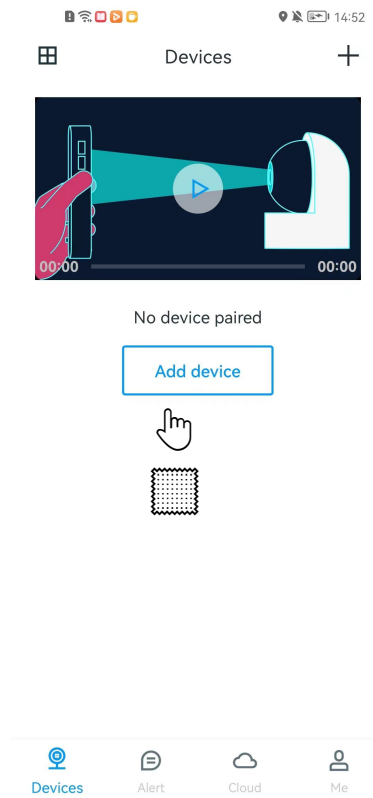
2、 Set your login password



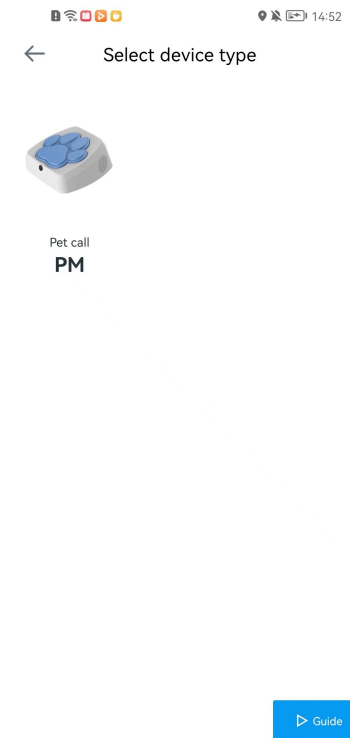
3、 Enter the verification code you received in your email



4、 sign up successfully

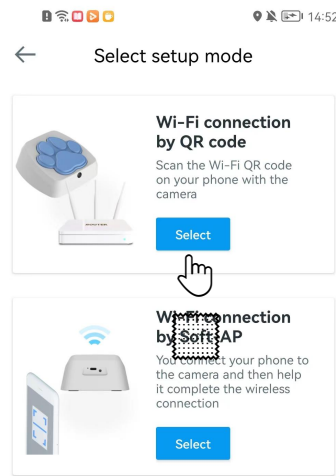


5、 Click "Add Device"



6、 Click the image to add your device

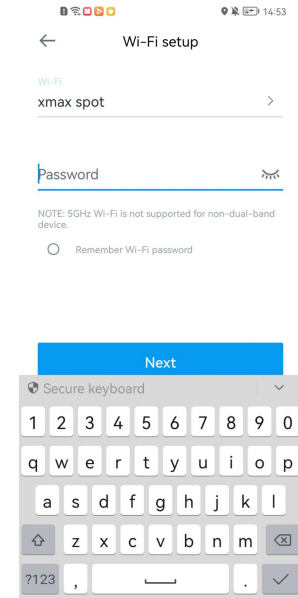
The device is placed from a position close to the router.



7、 Select setup mode



8、 Long press the button behind the device to reset, The indicator flashes red and blue;



9、 Select your WiFi network and enter your WiFi password

14:53

Connect to network



Place the QR code 3~8 inches in front of the camera lens.



If you hear "QR code scanning is successful", please press Next

Next

Didn't you hear it?



10、 Use your device's lens to scan QR code.

14:54

Wait for connection



Please wait 117 seconds

Pairing process takes about 1-2 minutes.

Connect to network Register on servers Initialize the device

Ensure your Wi-Fi is supportable 2.4G or 5G.

11、 Wait for connection.

14:54

Pair succeeded



Name the camera

Pet

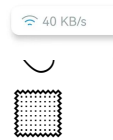
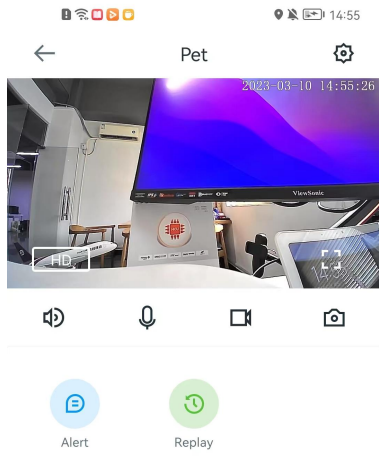
Front door Back yard Living room

Baby Pet Kitchen Garage

Office

OK

12、 Select the application scenario of your device.



13、 ; Your device is now ready to work;

Warning

To assure continued compliance, any changes or modifications not expressly approved by the party responsible for compliance could void the user's authority to operate this equipment.

FCC Statement

This equipment complies with Part 15 of the FCC Rules. Operation is subject to the following two conditions:

- (1) This device may not cause harmful interference, and
- (2) This device must accept any interference received, including interference that may cause undesired operation.

NOTE: This equipment has been tested and found to comply with the limits for a Class B digital device, pursuant to part 15 of the FCC rules. These limits are designed to provide reasonable protection against harmful interference in a residential installation. This equipment generates, uses and can radiate radio frequency energy and, if not installed and used in accordance with the instructions, may cause harmful interference to radio communications. However, there is no guarantee that interference will not occur in a particular installation. If this equipment does cause harmful interference to radio or television reception, which can be determined by turning the equipment off and on, the user is encouraged to try to correct the interference by one or more of the following measures:

- Reorient or relocate the receiving antenna.
- Increase the separation between the equipment and receiver.
- Connect the equipment into an outlet on a circuit different from that to which the receiver is connected.
- Consult the dealer or an experienced radio/TV technician for help.

FCC Radiation Exposure Statement:

The equipment complies with FCC Radiation exposure limits set forth for uncontrolled environment. This equipment should be installed and operated with minimum distance 20cm between the radiator and your body.