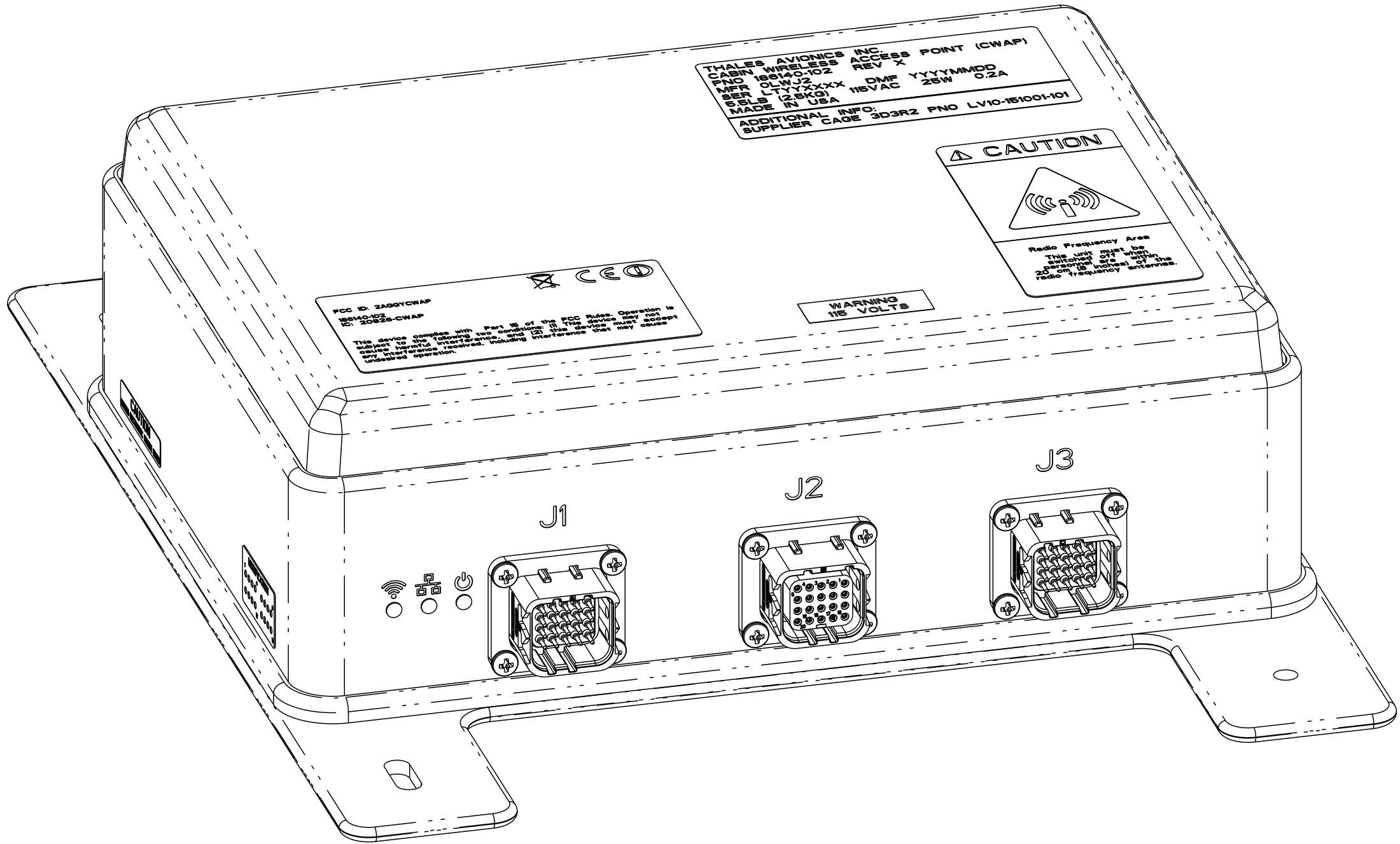


THALES CONFIDENTIAL INFORMATION: THE INFORMATION CONTAINED HEREON IS PROPRIETARY AND CONFIDENTIAL TO THALES AVIONICS, INC. AND/OR THE SUPPLIER IDENTIFIED HEREON AS THE APPROVED SOURCE OF SUPPLY AND SHALL NOT BE USED OR DISCLOSED, IN WHOLE OR IN PART, WITHOUT FIRST OBTAINING THE WRITTEN PERMISSION OF THALES AVIONICS, INC. THE TECHNOLOGY CONTAINED IN THESE DOCUMENTS IS CONTROLLED SUBJECT TO THE EXPORT ADMINISTRATION REGULATIONS (EAR99). RETRANSFER, EXPORT, OR USE CONTRARY TO U.S. LAW IS PROHIBITED.

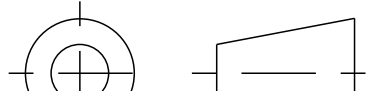
NOTES: UNLESS OTHERWISE SPECIFIED.

1. REFERENCE DOCUMENTS:
DRAWING TREE: LVII-151001
2. FOR -102 ONLY:
BAG AND TAG WITH CAGE CODE AND PART NUMBER.
3. INSTALL LABELS APPROXIMATELY WHERE SHOWN. FOR
ITEMS 3 AND 4, REFERENCE INDIVIDUAL LABEL
SPECIFICATIONS FOR LABEL INFORMATION.
4. TEST 1AW TEST PROCEDURE 186140-ATP.
5. FOR PARTS PRODUCED UNDER A PARTS MANUFACTURER
APPROVAL, LOCATE PMA LABEL (THALES P/N 222877-01)
APPROXIMATELY WHERE SHOWN. EXCEPT FOR PARTS
DELIVERED TO BOEING.



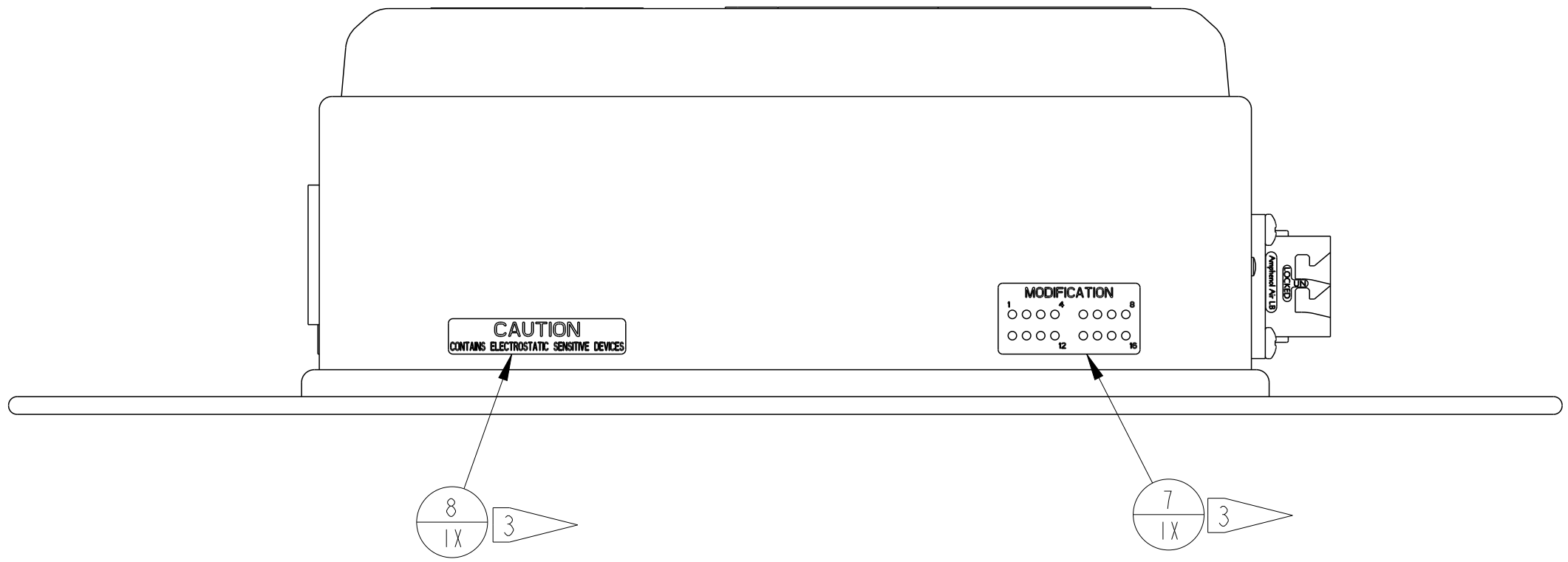
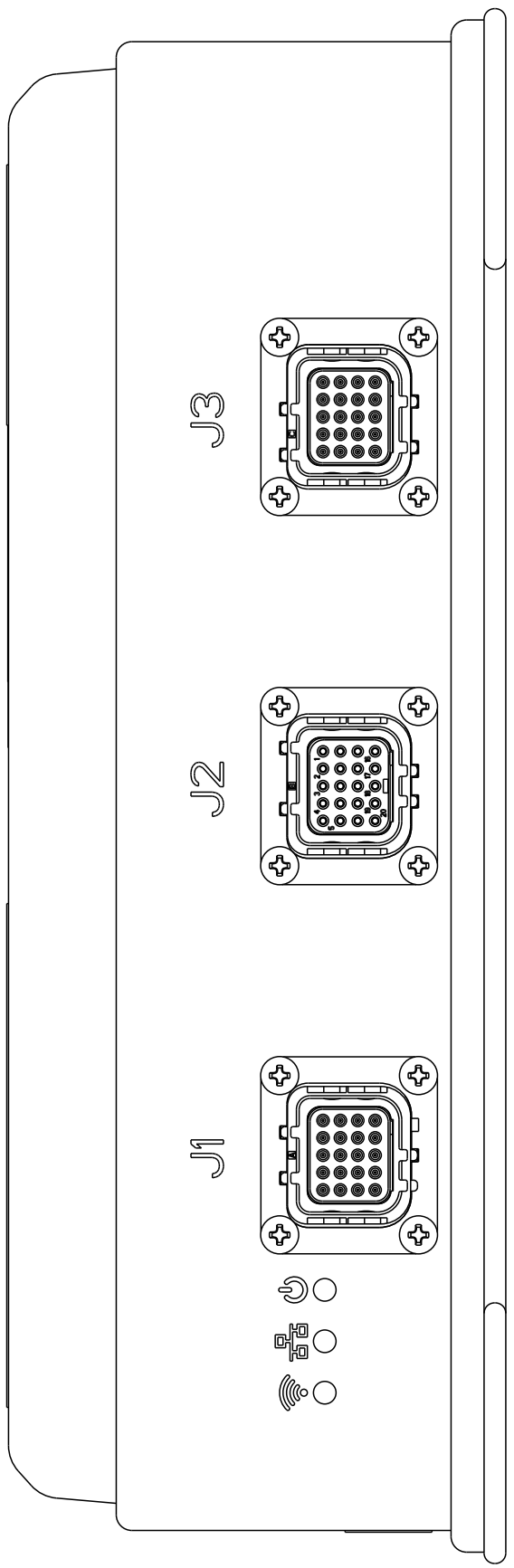
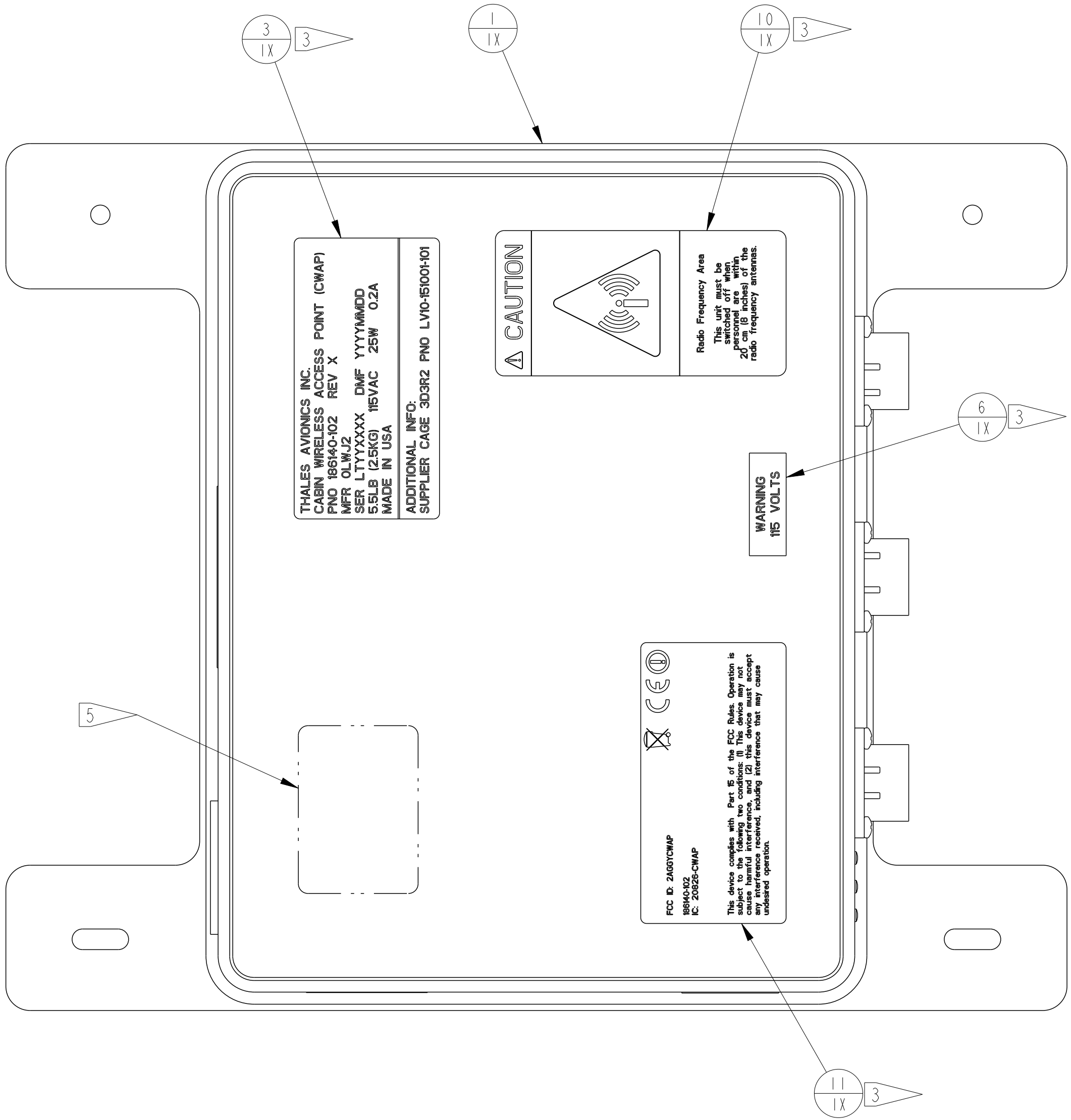
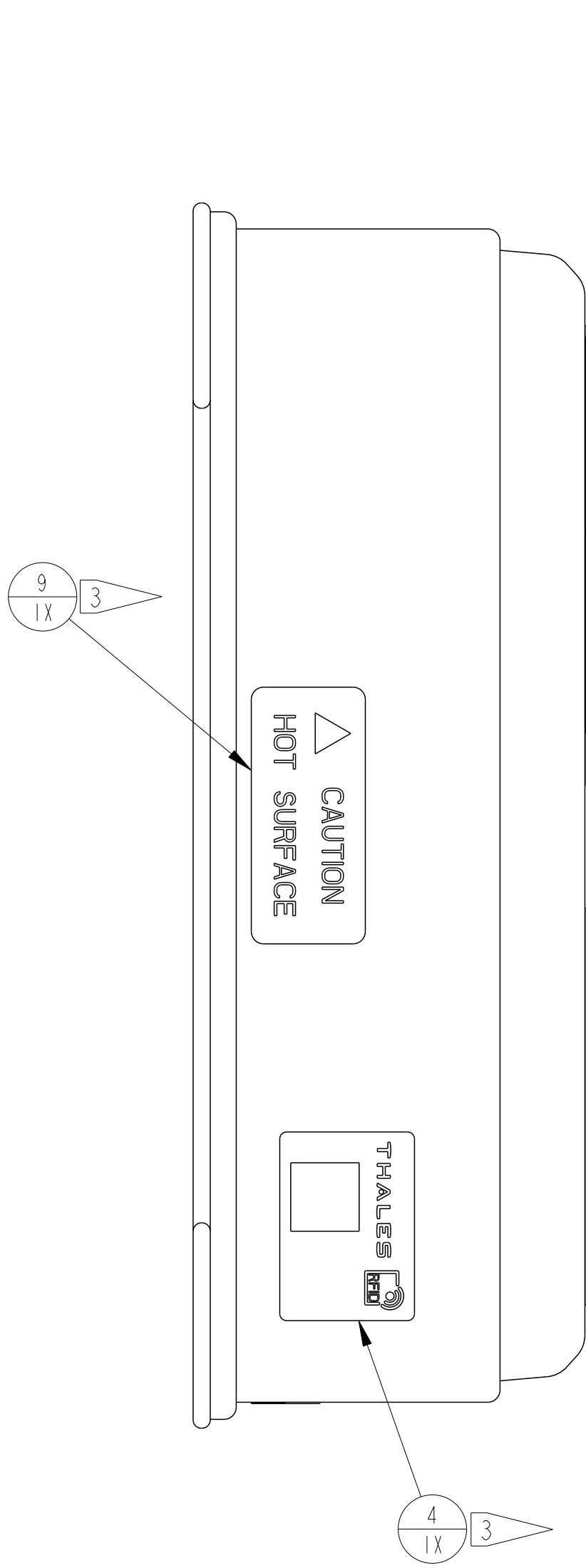
- 101 SHOWN

	I	EA	11	LV52-160801-001	LABEL, FCC ID		0LWJ2
	I	EA	10	LV52-160401-001	LABEL, RF CAUTION		0LWJ2
	I	EA	9	247028-01	LABEL, HOT SURFACE CAUTION		0LWJ2
	I	EA	8	246479-01	LABEL, ESD CAUTION		0LWJ2
	I	EA	7	9050-00-364	LABEL, MOD DOT		0LWJ2
	I	EA	6	254003-01	LABEL, HIGH VOLTAGE		0LWJ2
	I	EA	4	LV52-161101-001	LABEL, RFID		3D3R2
	I	EA	3	LV52-170102-001	LABEL, IDENTIFICATION		3D3R2
I		EA	2	LV14-151001-102	MECHANICAL ASSEMBLY, CWAP		0LWJ2
	I	EA	1	LV14-151001-101	MECHANICAL ASSEMBLY, CWAP		0LWJ2
QTY	QTY	UM	ITEM NO.	PART OR IDENTIFYING NO.	NOMENCLATURE OR DESCRIPTION	MATERIAL OR SPECIFICATION	CAGE CODE
-102	-101			LIST OF MATERIAL OR PARTS LIST			

		THIRD ANGLE PROJECTION		CAUTION: THE REVISION LEVELS OF THE DRAWING AND THE SEPARATE PARTS LIST ARE INDEPENDENT.									
													
		UNLESS OTHERWISE SPECIFIED: DIMENSIONS ARE IN INCHES TOLERANCES: DECIMALS ANGULAR .XX ±0.01 ± 0.5 .XXX ±0.001		CONTRACT NO.		<div>THALES</div> <div>THALES AVIONICS, INC. 58 DISCOVERY IRVINE, CA 92618, USA</div>							
		DO NOT SCALE DRAWING		APPROVALS	DATE					<div>TOP LEVEL, CWAP</div>			
		MATERIAL		DRAWN D. BELL	10/12/2016								
		FINISH		CHECK									
				ENGINEER									
				MANAGER									
						SIZE D	CAGE CODE ØLWJ2	DWG NO. LV10-151001	REV B				
186140 186140						SCALE 1:1000	RELEASE DATE	SHEET	1 OF 3				
NEXT ASSY	USED ON	Creo Parametric 2.0											
APPLICATION													

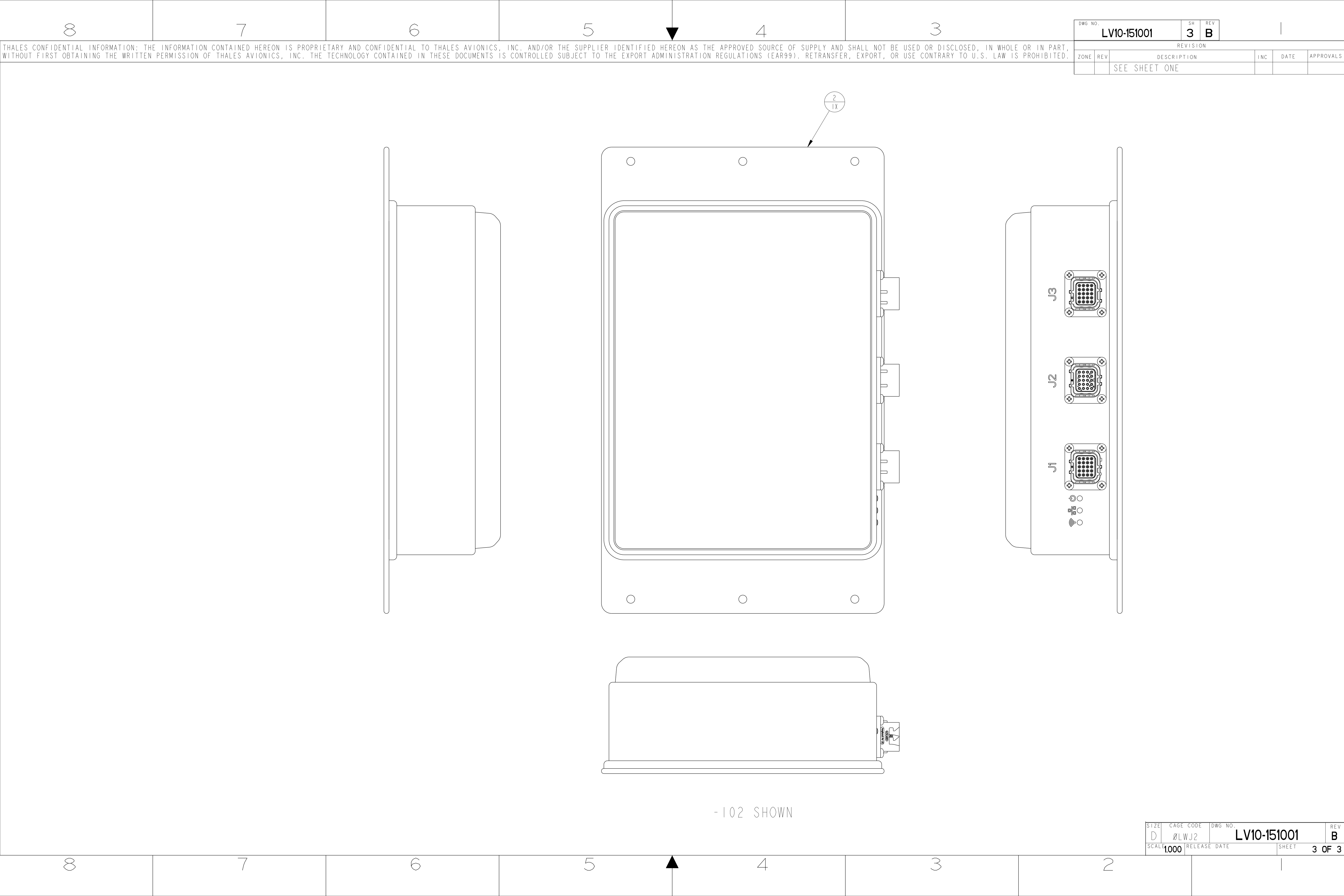
THALES CONFIDENTIAL INFORMATION: THE INFORMATION CONTAINED HEREON IS PROPRIETARY AND CONFIDENTIAL TO THALES AVIONICS, INC. AND/OR THE SUPPLIER IDENTIFIED HEREON AS THE APPROVED SOURCE OF SUPPLY AND SHALL NOT BE USED OR DISCLOSED, IN WHOLE OR IN PART, WITHOUT FIRST OBTAINING THE WRITTEN PERMISSION OF THALES AVIONICS, INC. THE TECHNOLOGY CONTAINED IN THESE DOCUMENTS IS CONTROLLED SUBJECT TO THE EXPORT ADMINISTRATION REGULATIONS (EAR99). RETRANSFER, EXPORT, OR USE CONTRARY TO U.S. LAW IS PROHIBITED.

DWG NO.		LV10-151001		SH	REV			
				2	B			
REVISION								
ZONE	REV	DESCRIPTION				INC	DATE	APPROVALS
		SEE SHEET ONE						



- 101 SHOWN

SIZE	CAGE CODE	DWG NO.	REV
D	ØLWJ2	LV10-151001	B
SCALE	1000	RELEASE DATE	SHEET 2 OF 3



THALES CONFIDENTIAL INFORMATION: THE INFORMATION CONTAINED HEREON IS PROPRIETARY AND CONFIDENTIAL TO THALES AVIONICS, INC. AND/OR THE SUPPLIER IDENTIFIED HEREON AS THE APPROVED SOURCE OF SUPPLY AND SHALL NOT BE USED OR DISCLOSED, IN WHOLE OR IN PART, WITHOUT FIRST OBTAINING THE WRITTEN PERMISSION OF THALES AVIONICS, INC. THE TECHNOLOGY CONTAINED IN THESE DOCUMENTS IS CONTROLLED SUBJECT TO THE EXPORT ADMINISTRATION REGULATIONS (EAR99). RETRANSFER, EXPORT, OR USE CONTRARY TO U.S. LAW IS PROHIBITED.

DWG NO.		SH	REV		
LV10-151001		3	B		
REVISION					
ZONE	REV	DESCRIPTION		INC	DATE
		SEE SHEET ONE			
					APPROVALS

SIZE	CAGE CODE	DWG NO.	REV
D	ØLWJ2	LV10-151001	B
SCALE	1000	RELEASE DATE	SHEET
			3 OF 3