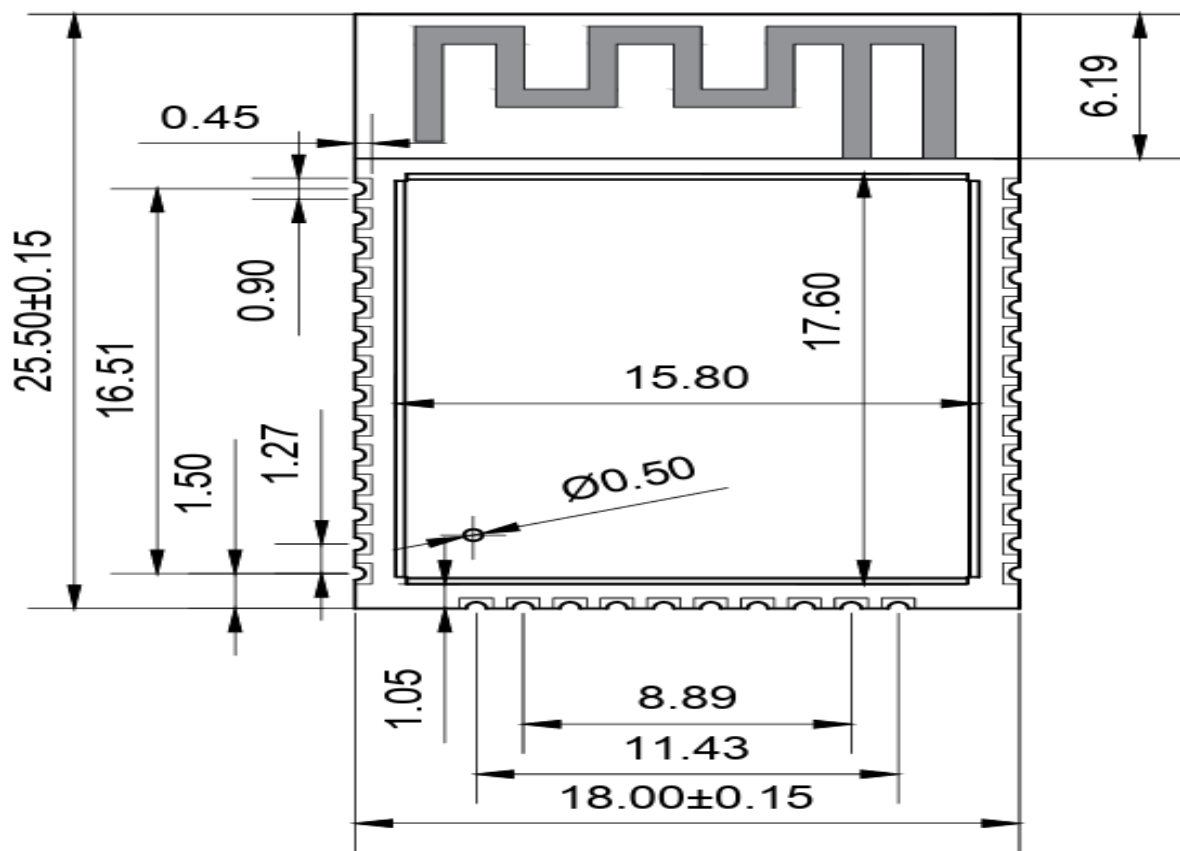


Antenna Specification

ITEM	SPEC
Antenna type	PCB Antenna(B)
Center Frequency	2400Mhz 1.75dBi 2450Mhz 2.21dBi 2500Mhz 2.34dBi
MAX GAIN	2.86dbi
Polarization	Horizontal
Azimuth Beam Pattern	Omni-directional
Impedance	50ohm
Antenna Length	

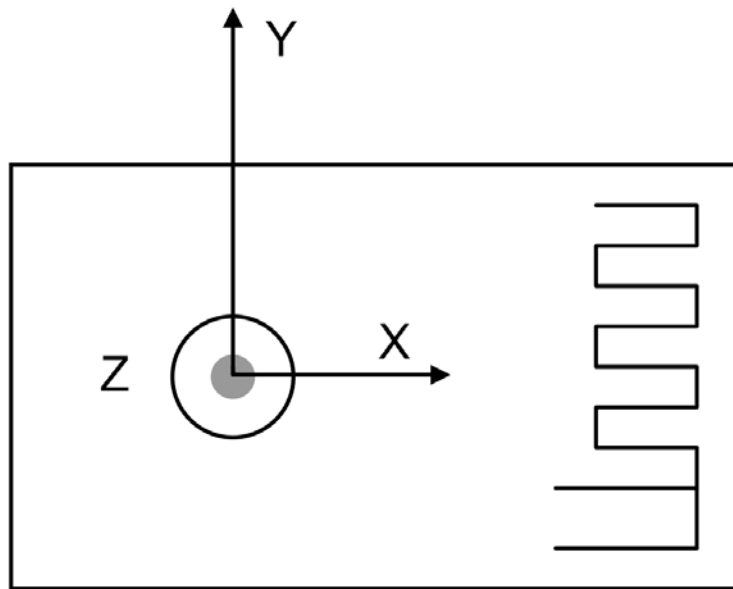
Antenna Photo & Length(mm)



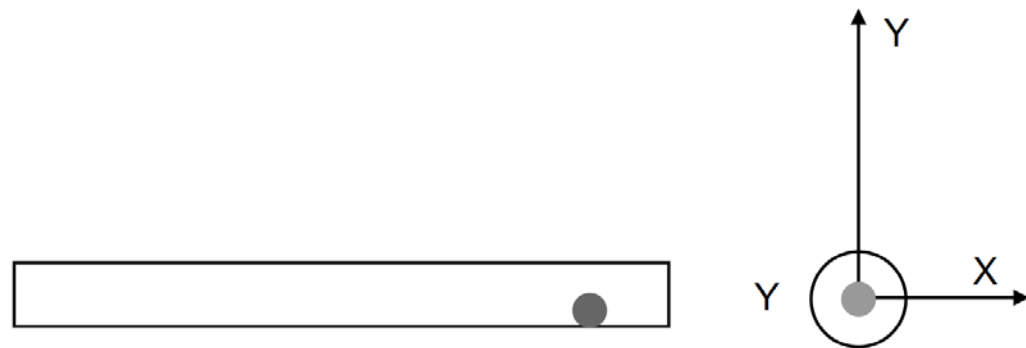
Top View

Coordinate System Reference: Antenna

Top view



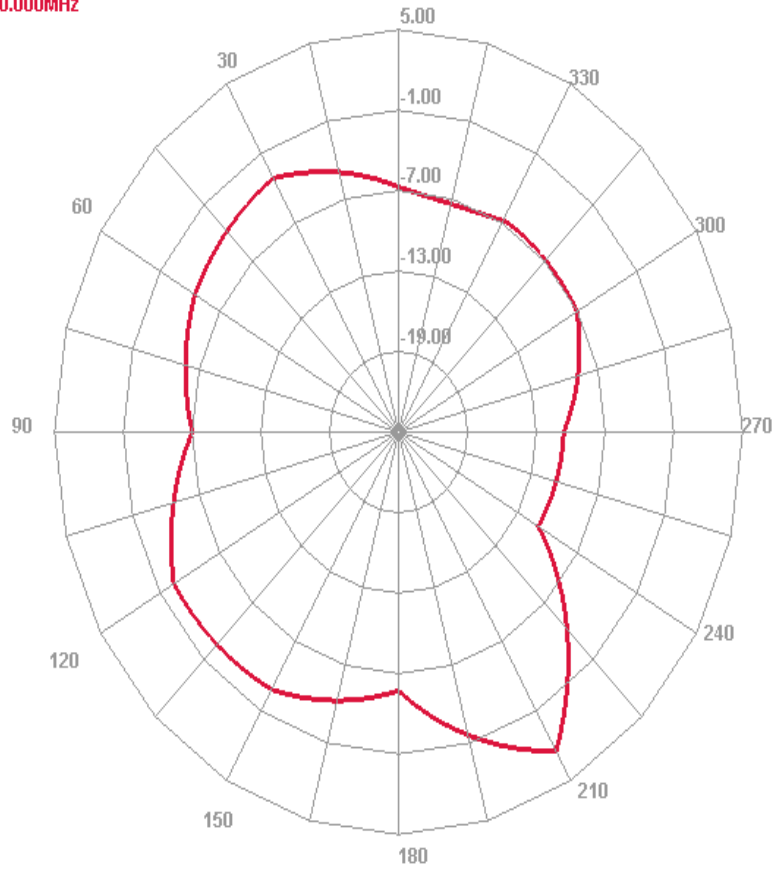
Side view



2D Radiation pattern f = 2410MHz

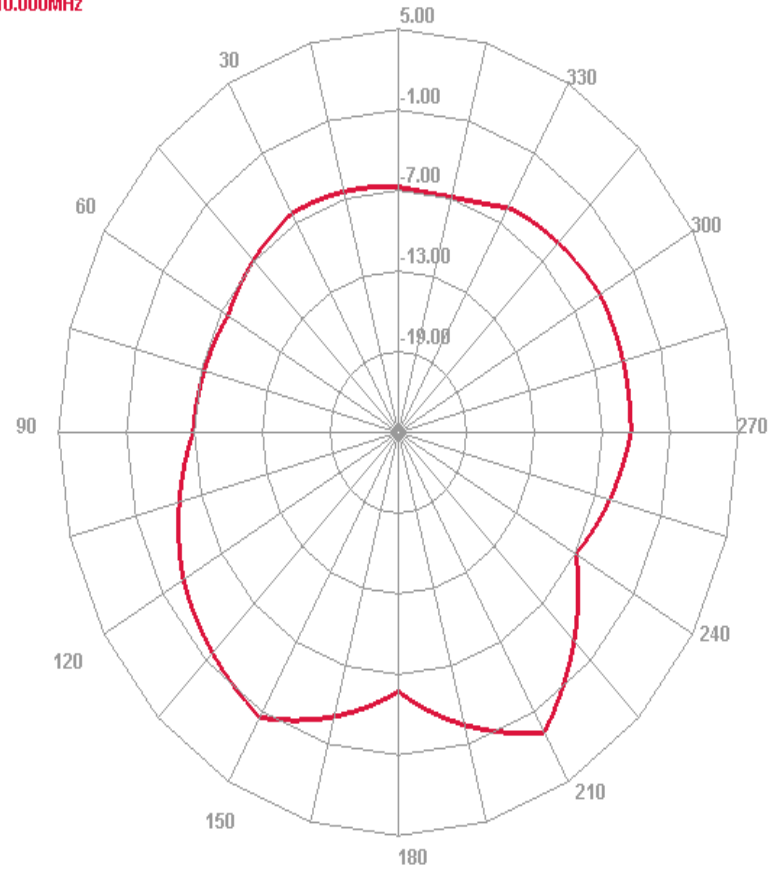
E1 Face

2410.000MHz



E2 Face

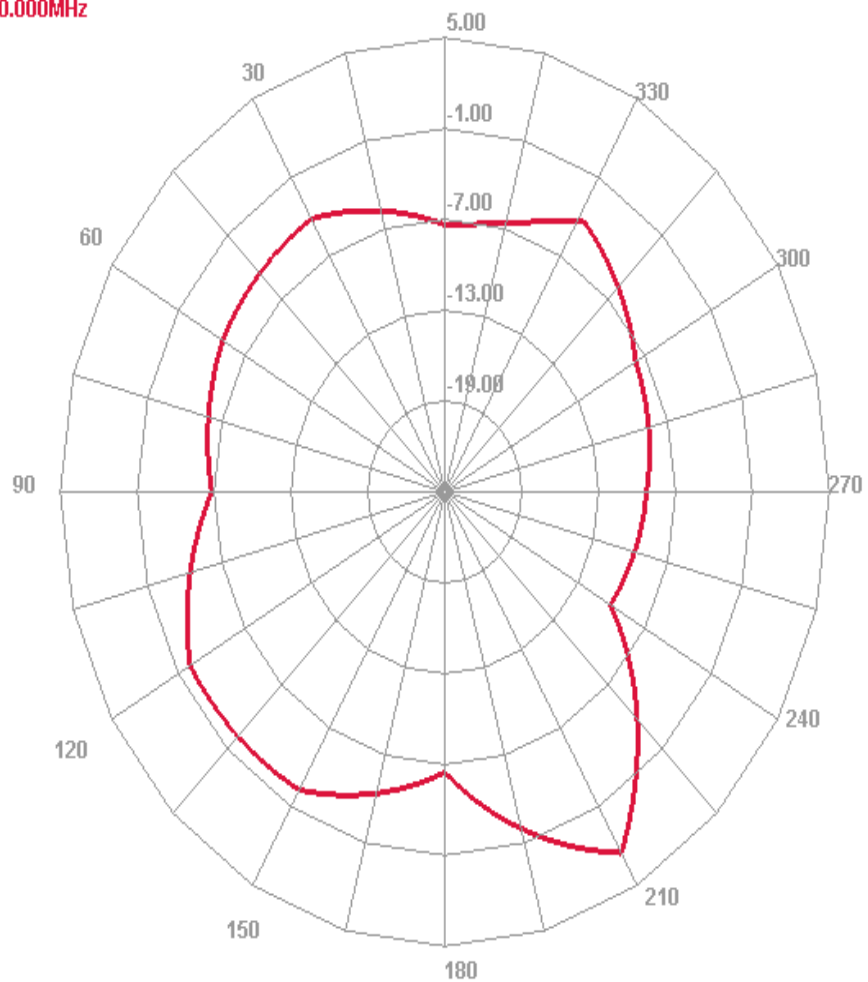
2410.000MHz



2D Radiation pattern f = 2440MHz

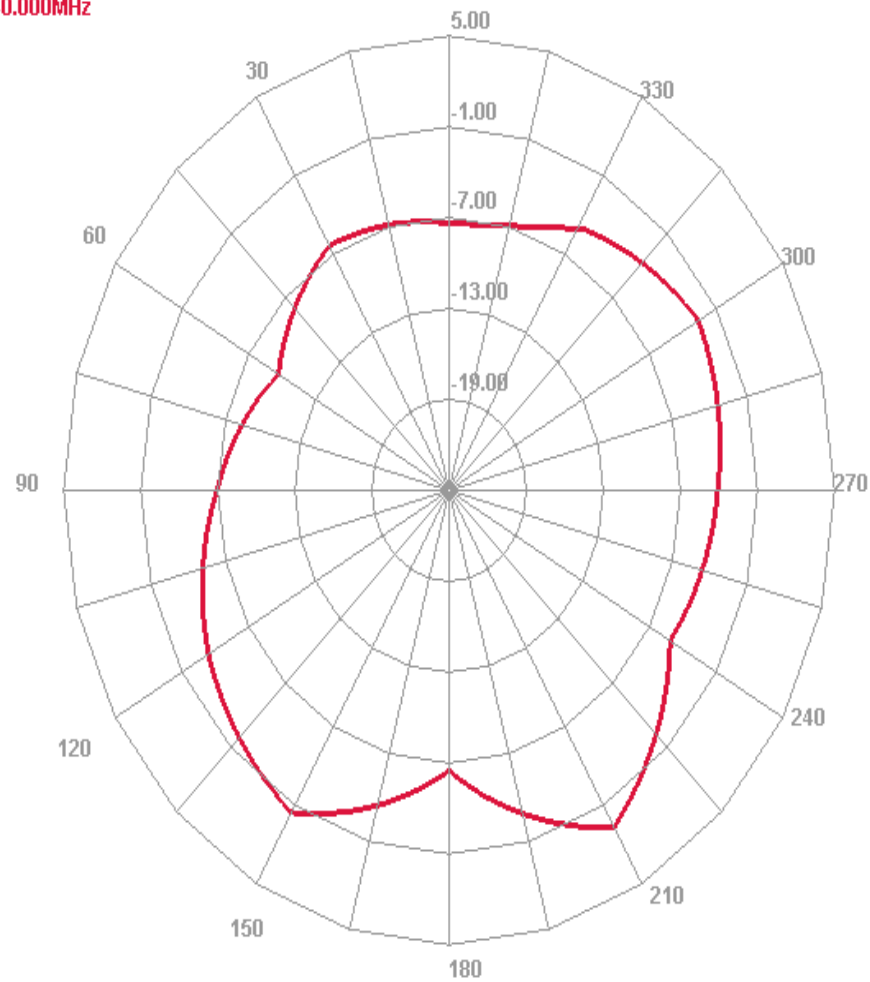
E1 Face

2440.000MHz



E2 Face

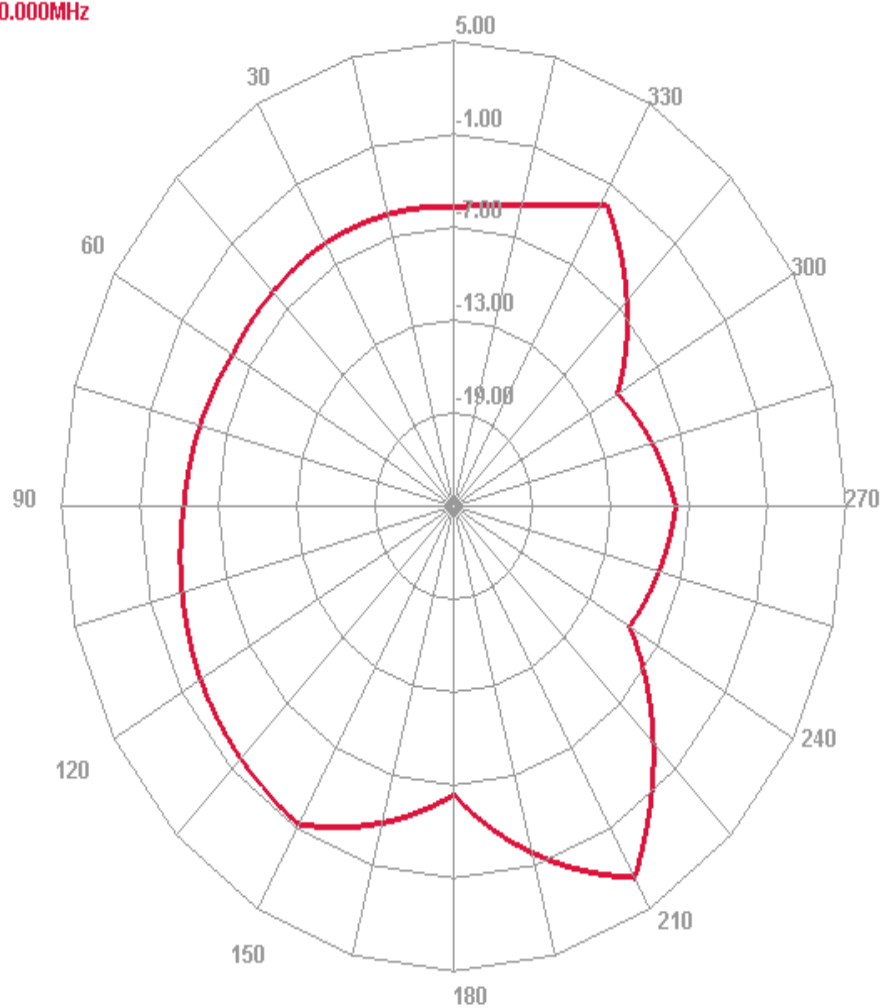
2440.000MHz



2D Radiation pattern f = 2480MHz

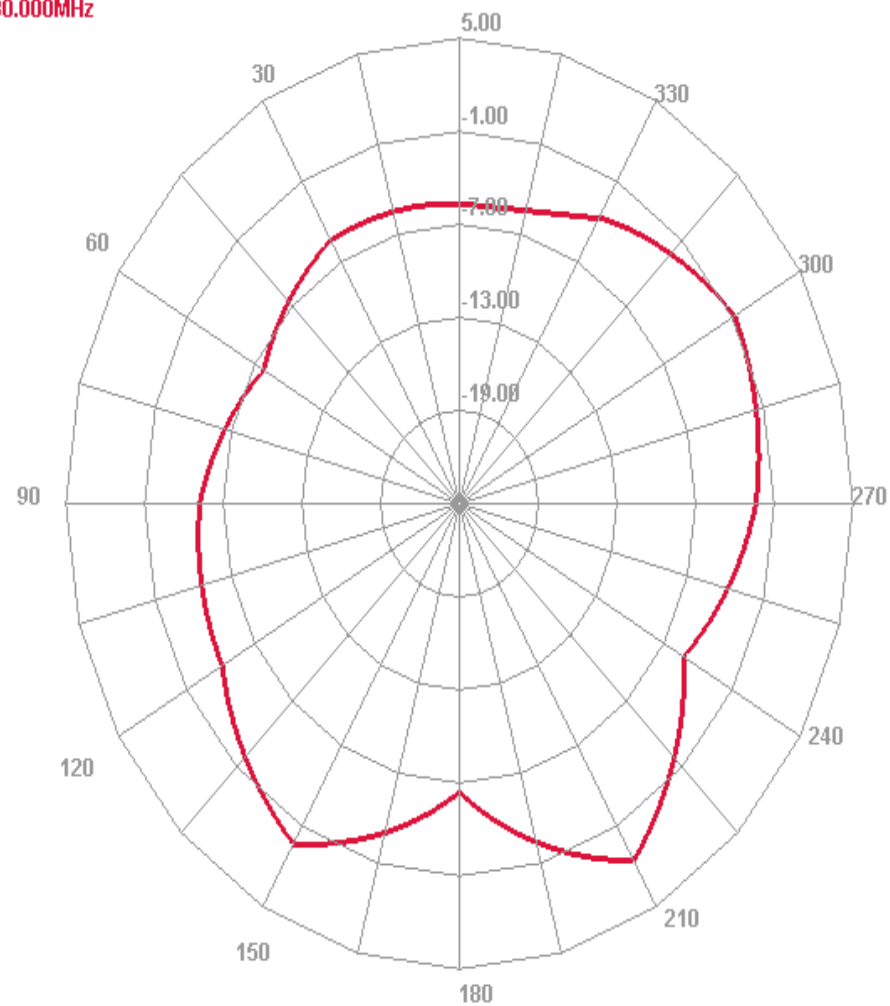
E1 Face

2480.000MHz

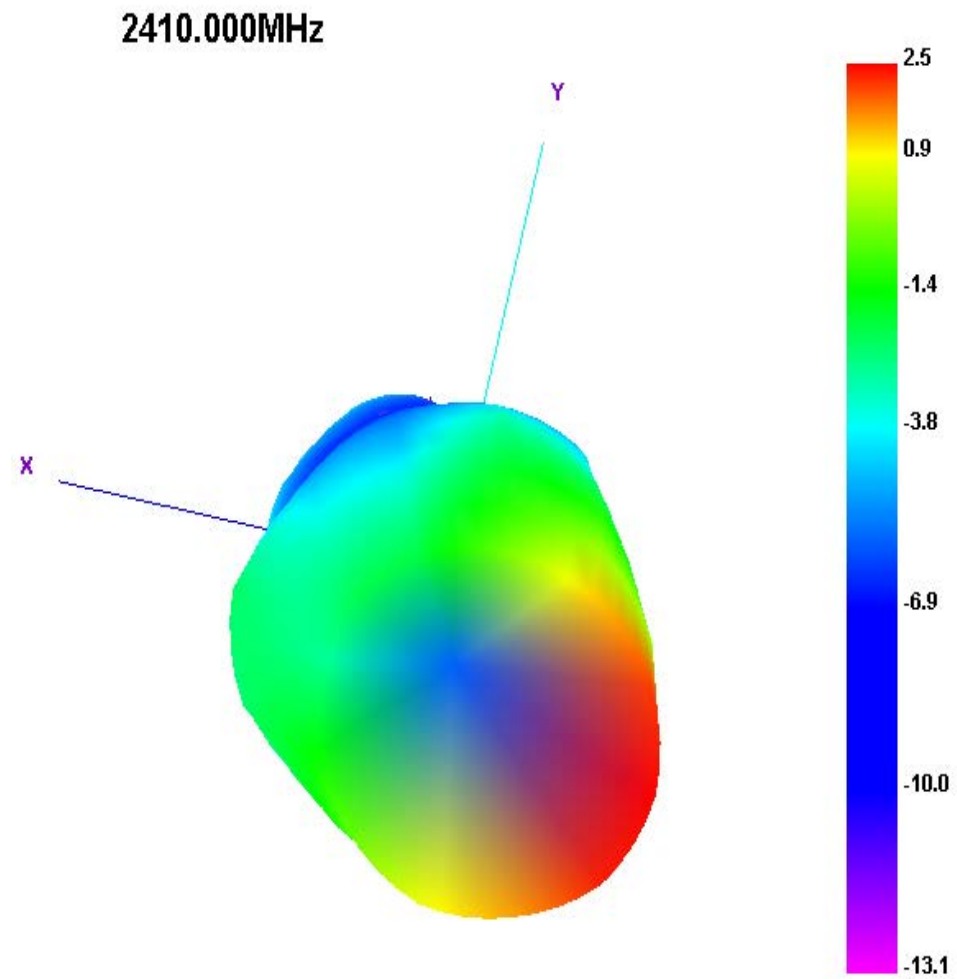


E2 Face

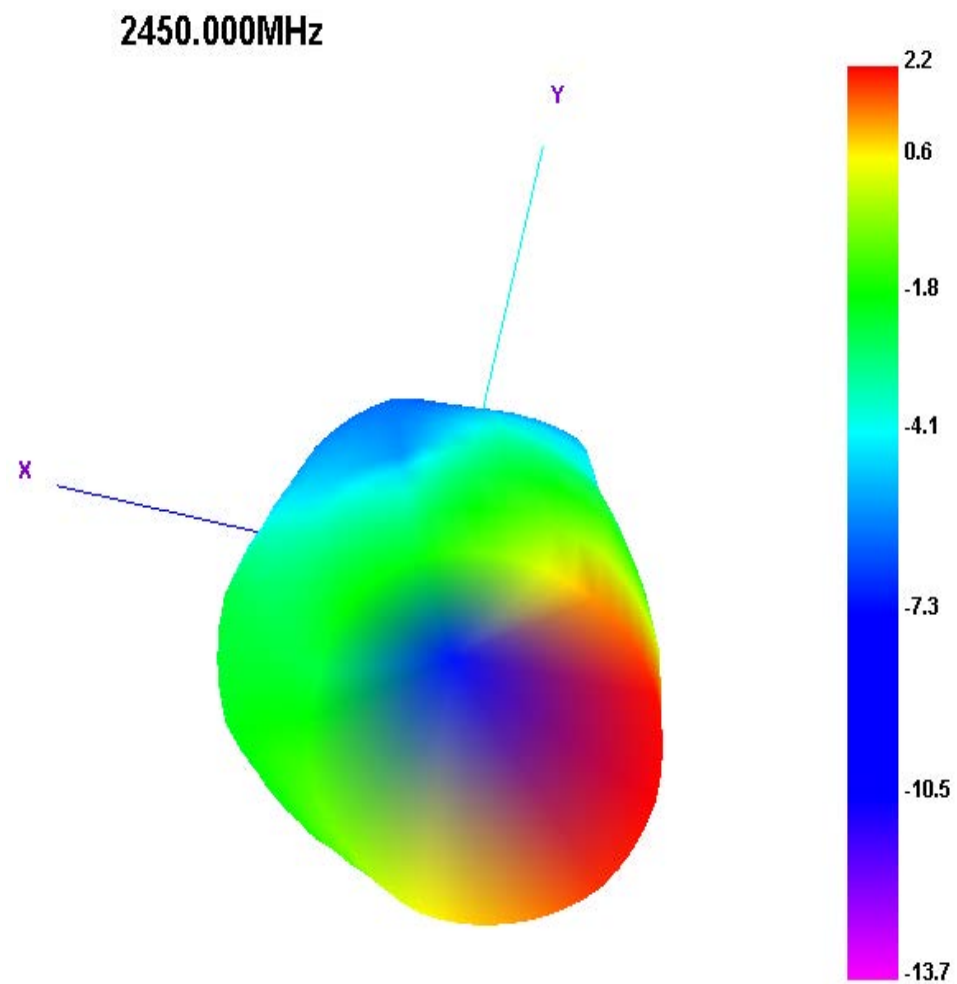
2480.000MHz



3D Radiation pattern $f = 2410\text{MHz}$

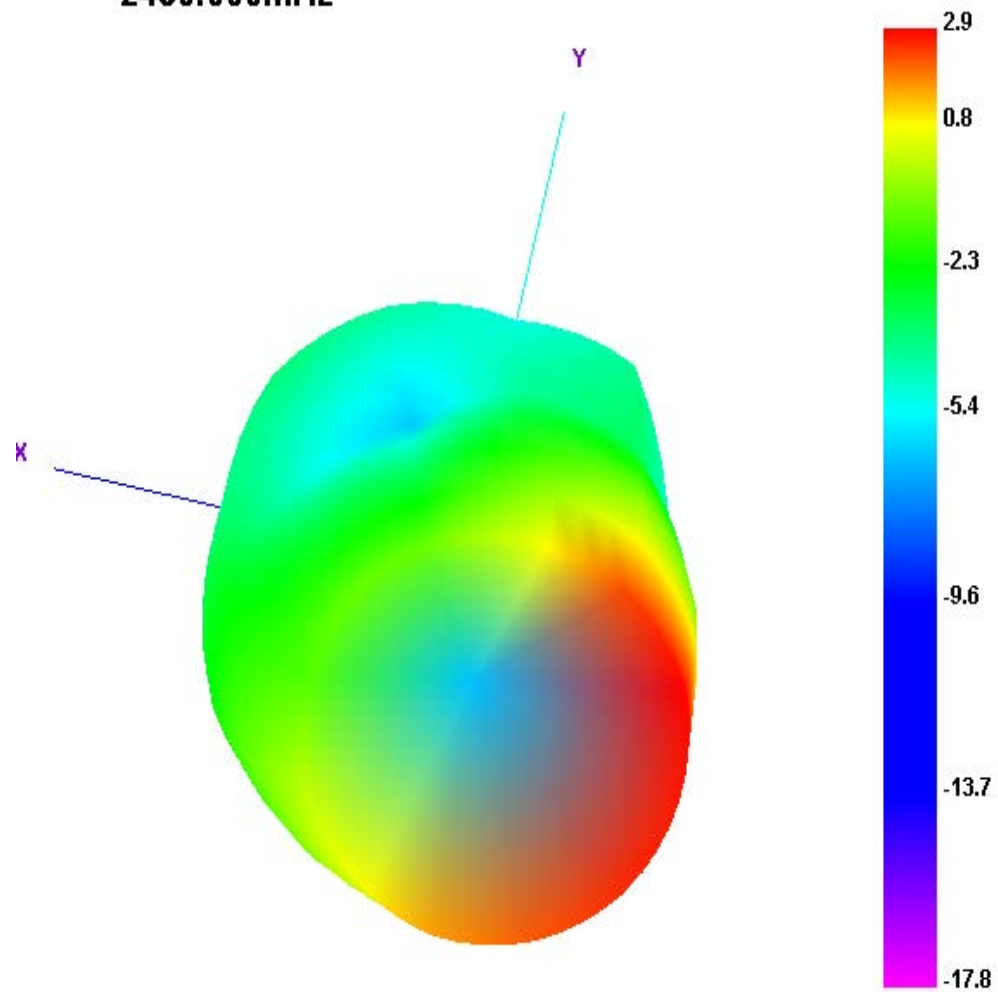


3D Radiation pattern $f = 2450\text{MHz}$



3D Radiation pattern f = 2480MHz

2480.000MHz



Measurements summary

Frequency(GHz)	Gain(dBi)	CP Gain(dBi)	CO Gain(dBi)	Efficiency(dB)	Efficiency(%)
2400	1.75	--	--	--	31.67%
2410	2.48	--	--	--	38.24%
2420	2.44	--	--	--	38.66%
2430	2.68	--	--	--	41.2%
2440	2.54	--	--	--	40.71%
2450	2.21	--	--	--	39.25%
2460	2.22	--	--	--	39.98%
2470	2.75	--	--	--	46.14%
2480	2.86	--	--	--	48.5%
2490	2.58	--	--	--	45.22%
2500	2.34	--	--	--	41.92%

Wireless-Tag Technology Co., Ltd

801, Block A, Building 6, Shenzhen International Innovation Valley, Dashi Road, Xili Community, Xili Street, Nanshan District, Shenzhen